



Mestrelab Research

# MLicServer 3.0

---

HOW TO INSTALL IN WINDOWS



**NOVA**

Document Number

P/N xxx R1

## COPYRIGHT

**©2025 MESTRELAB RESEARCH S.L.**

All rights reserved. No parts of this work may be reproduced in any form or by any means - graphic, electronic, or mechanical, including photocopying, recording, taping, or information storage and retrieval systems - without the written permission of the publisher.

Products that are referred to in this document may be either trademarks and/or registered trademarks of the respective owners. The publisher and the author make no claim to these trademarks.

While every precaution has been taken in the preparation of this document, the publisher and the author assume no responsibility for errors or omissions, or for damages resulting from the use of information contained in this document or from the use of programs and source code that may accompany it. In no event shall the publisher and the author be liable for any loss of profit or any other commercial damage caused or alleged to have been caused directly or indirectly by this document.

## TABLE OF CONTENTS

<b>1. SERVER SETUP .....</b>	<b>3</b>
1.1. DOWNLOAD AND INSTALL MLICSERVER .....	3
1.2. CHECK INSTALLATION .....	4
1.3. GET HOST ID TO GET THE LICENSE FILES FROM MESTRELAB.....	4
1.4. INSTALL THE LICENSES.....	6
<b>2. ADD SERVER INFORMATION INTO THE LICENSE FILES.....</b>	<b>7</b>
2.1. DISTRIBUTE EDITED LICENSE FILES TO THE MNOVA'S USERS .....	9
2.1.1. <i>Setup shared license repository .....</i>	<i>10</i>
2.1.2. <i>Send the license files.....</i>	<i>12</i>
<b>3. MANAGE THE LICENSE SERVER .....</b>	<b>12</b>
3.1. MANAGING LOG FILE .....	12

In this guide we will explain how to set up a Mestrelab License Server in a Windows machine to serve either campus/site or floating/concurrent licenses.

The license server will allow you to provide license seats to your users and to also manage these licenses.

## 1. Server setup

### 1.1. Download and install MLicServer

The first thing is to download and install the license server

1. Download the latest license server setup file: [MestrelabLicServer v3.0.0](#)
2. **WARNING:** Uninstall any previous installation of the license server < 3.0.0. Go to Settings → Apps → Installed apps and find any previous installation of MestrelabLicServer and uninstall it.
3. Install the license server either standalone or as a suite:
  - If you install it standalone, only the license server will be installed. Just install the MSI package with any of this mechanisms:
    - Just double clicking on the file and follow the wizard instructions.
    - Run the following commands from the command line replacing values between <> by their corresponding values and follow the wizard instructions:
      - To just install

```
msiexec.exe /i <PATH_TO_MLICSRV_MSI_FILE>\MestrelabLicServer-  
<MLICSRV_VERSION>-win64.msi
```

- To install creating a log file into your desktop

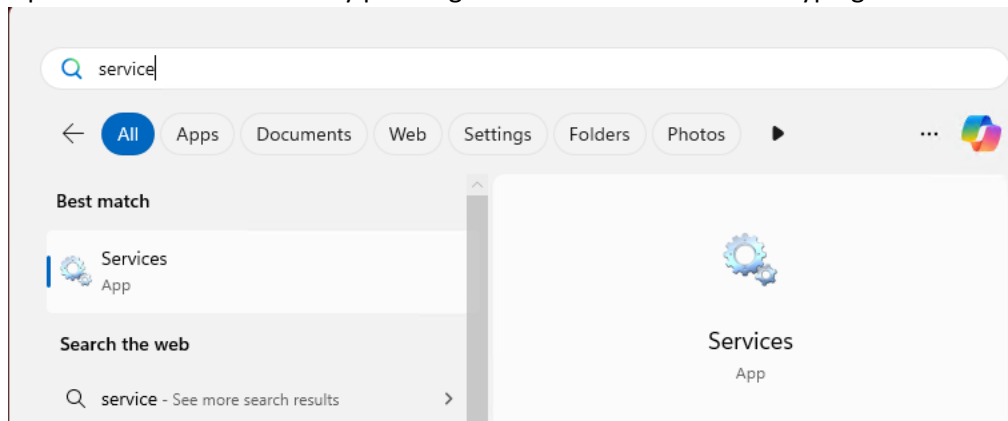
```
msiexec.exe /l*v C:\Users\<YOURUSERNAME>\Desktop\mlicserver-install.log /i  
<PATH_TO_MNOVA_MSI_FILE>\MestrelabLicServer-<MLICSRV_VERSION>-  
win64.msi
```

- If you install the suite, just run the executable and follow the wizard instructions. By default it will install the license server and MLicAdmin

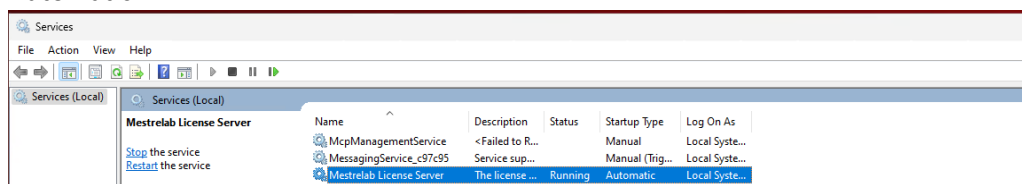
## 1.2. Check installation

Once installed, MLicServer will be installed as a service, and it will run automatically when computer boots up. Check that the service is installed and running.

1. Open the Services console by pressing Windows Start button and typing Services



2. Check that there is a service named Mestrelab License Server, it's running and the Startup type is Automatic



## 1.3. Get Host ID to get the license files from Mestrelab

**NOTE:** Since version 3 of MLicServer, the MLicAdmin tool is not bundled into the same installation package MSI as the server except if you are installing the Mestrelab License Server Suite. In any case there is a command line tool MLicServerCtl with the same functionality.

- **From MLicServerCtl**



1. Open the Terminal app to invoke the command line utility MLicServerCtl
2. Change the current directory to the MLicServer installation directory typing:

```
cd 'C:\Program Files\Mestrelab Research S.L\MestrelabLicServer\'
```

3. From there run the following command to get the server information

```
.\mlicserverctl.exe Server
```

- You should get an output like:

```
PS C:\Program Files\Mestrelab Research S.L\MestrelabLicServer> .\mlicserverctl.exe Server
```

Server				
#	Hostname/Addr	Host Id	Port	Protocol Version
1	localhost	9T9VJ-K8J8WKB9-FATJ6-LYXP87PP	15500	v1.2.0.0

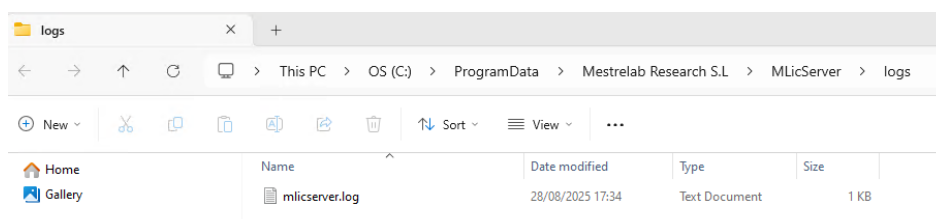
```
PS C:\Program Files\Mestrelab Research S.L\MestrelabLicServer> |
```

- Copy the Host ID from there and send it back to us by email to [support@mestrelab.com](mailto:support@mestrelab.com)

- From the log file:**

- Locate the log file: The MLicServer log file is a text file named `mlicserver.log` located in the MLicServer ProgramData folder:

`C:\ProgramData\Mestrelab Research S.L\MLicServer\logs\mlicserver.log`



- Open the log file with the Notepad and you should see something like:

```
II 2025-08-28T17:34:56 [MLicServer] >> **** Starting up MLicServer v3.0.0-39816 ****

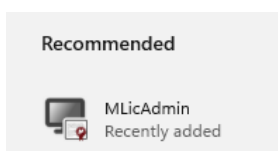
II 2025-08-28T17:34:56 [MLicServer] >> Running in host id: 9T9VJ-K8J8WKB9-FATJ6-
LYXP87PP

II 2025-08-28T17:34:56 [MLicServer] >> Settings loaded from
\HKEY_LOCAL_MACHINE\Software\Mestrelab Research S.L\MLicServer
```

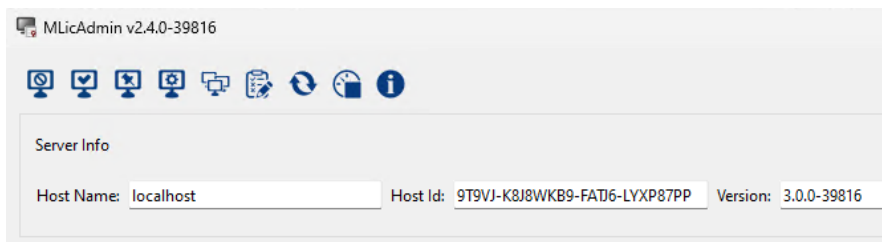
- Copy the Host ID from there and send it back to us by email to [support@mestrelab.com](mailto:support@mestrelab.com)

- From MLicAdmin:**

- Download the latest MLicAdmin setup file: [MLicAdmin v2.4.0](#)
- Install it into the same machine as the server
- Once installed run it from the Windows Start menu



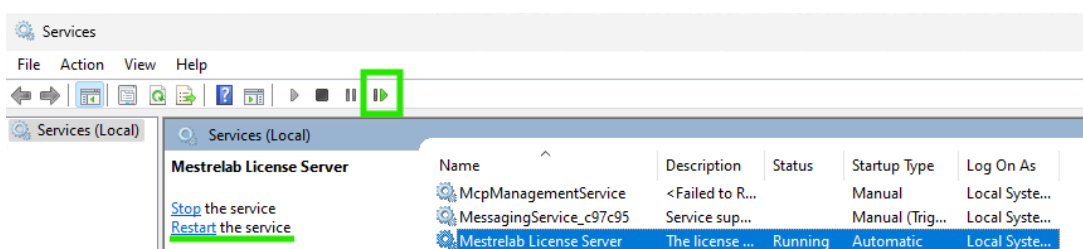
- Copy the Host ID from the main dialog box and send it back to us by email to [support@mestrelab.com](mailto:support@mestrelab.com)



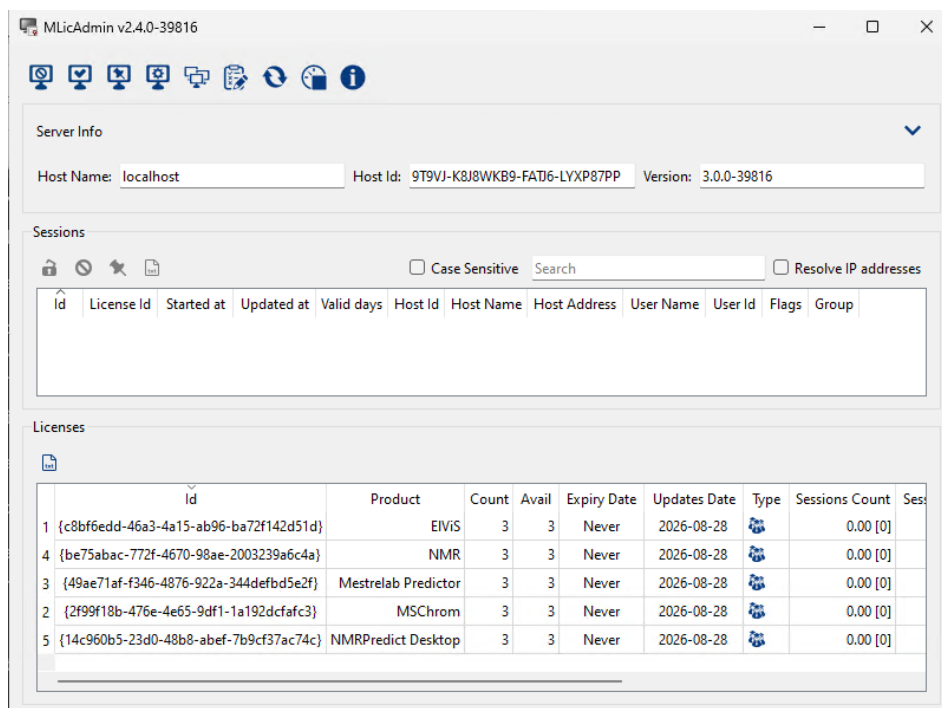
**NOTE:** Since MLicServer version 2.2.0, by default, only `localhost` connection is allowed to MLicAdmin. If you need to use MLicAdmin from any other machine than the local machine —where the server is running— then you must allow it from the MLicAdmin or the MLicServerCtl. Therefore, for the first time, the MLicAdmin must be run from the same computer where the server is running and the server name must be `localhost` or the IP address `127.0.0.1`.

## 1.4. Install the licenses

- Once you send us the server Host ID, we will write back to you with your license files
- Copy them into:
  - Either to `%PROGRAMDATA%\Mestrelab Research S.L\MestrelabLicServer\licenses`. This is the preferred location. `%PROGRAMDATA%` is a standard Windows environment variable which usually expands to `C:\ProgramData`—
  - Or to the `licenses` subdirectory of the MLicServer installation path `C:\Program Files\Mestrelab Research S.L\MestrelabLicServer\licenses`. We recommend not to use this location anymore and use the previous one.
  - NOTES:**
    - Copy just the license files `*.lic` directly into the designated locations. Do not copy a ZIP containing them or create any kind of subdirectory hierarchy.
    - If you have renewed the Updates & Support package, and you have received a new set of license files, please make sure that you remove the old license files before copying the new ones.
- Restart the 'Mestrelab License Server' service from the Services panel:



- Run again MLicAdmin and check you see your licenses in the Licenses table. If no item shows, it could mean that either the license file was not correctly installed or the license file is invalid.



## 2. Add server information into the license files

You must provide your users a copy of the license files that Mestrelab provided you before. But first, you have to edit the license file to add the server hostname or IP address information so Mnova will know to which server validate the licenses.

To add the server information into the license files —The license file is a XML file with .lic extension— open them with any text editor like the Windows Notepad and should see something like:



```
<mlic version="1.0">

<licid>{b62b493d-9e6d-40f0-a0e6-c728c46fc3b2}</licid>

<type>floating</type>

<hostid>7S7YJ-67R8WBEX-ZE5VW-FXCXVME</hostid>

<vendor>Mestrelab Research S.L.</vendor>

<purchaser>John Doe</purchaser>

<product>NMR</product>

<version>1.0</version>

<uuid>{5b0a2812-8ee2-406f-8030-84f5f6ac4a4b}</uuid>

<count>2</count>

<issued>2007-05-24</issued>

<expires>never</expires>

<update>2008-05-24</update>

<sign>Lk8NmBTei5ewmCzGYEAg...</sign>

</mlic>
```

Now you must add the following line between the mlic opening tag <mlic> and the closing one </mlic>:

```
code class="xml">

<server>SERVER_NAME</server>
```

changing the `SERVER_NAME` by either your server hostname or your server IP address in dot notation.

**NOTE:** If the server's IP address is dynamic, you must use the server hostname instead of the IP address in dot notation.

So, in the previous example the final license file would look like:

```
<mlic version="1.0">
  <licid>{b62b493d-9e6d-40f0-a0e6-c728c46fc3b2}</licid>
  <type>floating</type>
  <hostid>7S7YJ-67R8WBEX-ZE5VW-FXCXVME</hostid>
  <vendor>Mestrelab Research S.L.</vendor>
  <purchaser>John Doe</purchaser>
  <product>NMR</product>
  <version>1.0</version>
  <uuid>{5b0a2812-8ee2-406f-8030-84f5f6ac4a4b}</uuid>
  <count>2</count>
  <issued>2007-05-24</issued>
  <expires>never</expires>
  <update>2008-05-24</update>
  <server>SERVER_NAME</server>
  <sign>Lk8NmBTei5ewmCzGYEAg...</sign>
</mlic>
```

**NOTE:** If you have problems or are not confident with this process, just contact us and provide your server name or IP address and we will include them in the license file before sending it back to you.

## 2.1. Distribute edited license files to the Mnova's users

You can now circulate an email to your users asking them to download Mnova

Now you have two options to distribute the edited license files:

- [Setup shared license repository](#)
- [Send the license files](#)

### 2.1.1. Setup shared license repository

We strongly recommend this option if you are an IT member or you have an IT department that will care of the installation, because in the future you will not need to worry about sending new license files each year when you renew the Updates & Support package of our products.

1. You must create a shared folder accessible by all the Mnova clients either in the same server where MLicServer was installed or any other server —if you already have a file server—
2. Copy all the license files that you want to share with your clients to there
3. Setup Mnova clients to search for licenses into that shared folder:

- **For windows users:**

- Create a Windows registry file, `.reg`, with the following information

```
Windows Registry Editor Version 5.00

[HKEY_CURRENT_USER\Software\Mestrelab Research S.L.\MestReNova\License]

"SharedRepository"="//YOUR_FILE_SERVER_NAME/YOUR_SHARED_FOLDER_NAME"
```

Changing `YOUR_FILE_SERVER_NAME` by either your server's IP address or host name and `YOUR_SHARED_FOLDER_NAME` by the name for your shared resource

- Send this `.reg` file to the clients. The clients will only need to double click on it in order to import the registry configuration. Of course, it is possible to do that by batch scripting.
- **NOTE:**

- If you need to activate licenses for Mnova Lite, the `.reg` file must contain this line (instead):

```
[HKEY_CURRENT_USER\Software\Mestrelab Research S.L.\MestReNova LITE\License]
```

- If you already have a shared file server and all your clients have mapped the network share to a drive letter you can use it too like:

```
Windows Registry Editor Version 5.00

[HKEY_CURRENT_USER\Software\Mestrelab Research S.L.\MestReNova\License]

"SharedRepository"="YOUR_SHARED_DRIVE_LETTER:/YOUR_SHARED_FOLDER_PATH"
```

▪ **For macOS users:**

- They will have to edit the property list file which file is located at `~/Library/Preferences/com.mestrelab.MestReNova.plist`.
- For example, using the Terminal app (in `/Applications/Utilities/Terminal.app`) you could set the setting using the following command:

```
defaults write com.mestrelab.MestReNova License.SharedRepository  
/path/to/licenses/shared/repository
```

changing `/path/to/licenses/shared/repository` with the path where the licenses shared repository is from their system.

- To check the current value you can type instead:

```
defaults read com.mestrelab.MestReNova License.SharedRepository
```

- To delete the key if you don't want to use it anymore:

```
defaults delete com.mestrelab.MestReNova License.SharedRepository
```

▪ **For Linux users:**

- They will need to edit the following text file:

`.config/Mestrelab Research S.L./Mestrenova.conf`

- Search for the `[License]` section inside the file and add the following line to that section. If the section doesn't exist, add it typing the line `[License]`.

```
SharedRepository = /path/to/licenses/shared/repository
```

changing `/path/to/licenses/shared/repository` with the path where the licenses shared repository is from their system.

### 2.1.2. Send the license files

An alternative option is to circulate an email to your users attaching the license files you have edited following the instructions in the previous steps and instruct the users to save it on disk and, once they have run Mnova, load the license files by dragging them into the application.

Alternatively, they could go to **Help/Get-Install** menu and click on **Install** button (**Help/Evaluate-Buy** and click on **Activate** if you are using Mnova  $\geq 8.0.0$ ) then navigate to the license file and double click on it.

**Note:** This option would work just fine but it will require the redistribution of the license files for activation to all client computers each time you purchase a new Updates & Support package.

## 3. Manage the license server

Now the server is setup you can manage it with:

- **MLicServerCtl.** See [MLicServerCtl Usage](#)
- **MLicAdmin.** See [MLicAdmin Usage](#)

**IMPORTANT:** The license server will use TCP port 15500. During the installation a Microsoft's firewall inbound rule will be added to allow incoming connections to TCP port 15500. Make sure that your client and server firewalls allow TCP connections to this port and modify the firewall rules accordingly.

### 3.1. Managing Log file

By default the log file will be generated at `%ProgramData%\Mestrelab Research S.L.\MLicServer\logs\mlicserver.log`, the log level will be Debug (5) and the log rotation will take place when the log file size exceeds 10 MB and it will keep the last 5 log rotations. This can be changed through the settings (Windows registry) like:

```
Windows Registry Editor Version 5.00

[HKEY_LOCAL_MACHINE\Software\Mestrelab Research S.L.\MLicServer\Settings]

"LogFile"="C:/ProgramData/Mestrelab Research S.L./MLicServer/logs/mlicserver.log"

"LogLevel"=dword:00000005

"LogRotSize"=dword:0000000a

"LogRotCount"=dword:00000005
```