



AVIDYNE

Skytrax-100B Laptop Interlink

Processor Drivers & Com/USB Port Detection

Introduction

This presentation will illustrate the “Command” interface between the Skytrax-100B and a Windows Based Laptop Computer.


This interface is needed to perform the necessary Input/Output configurations of the RS-232 serial ports of the Skytrax-100B

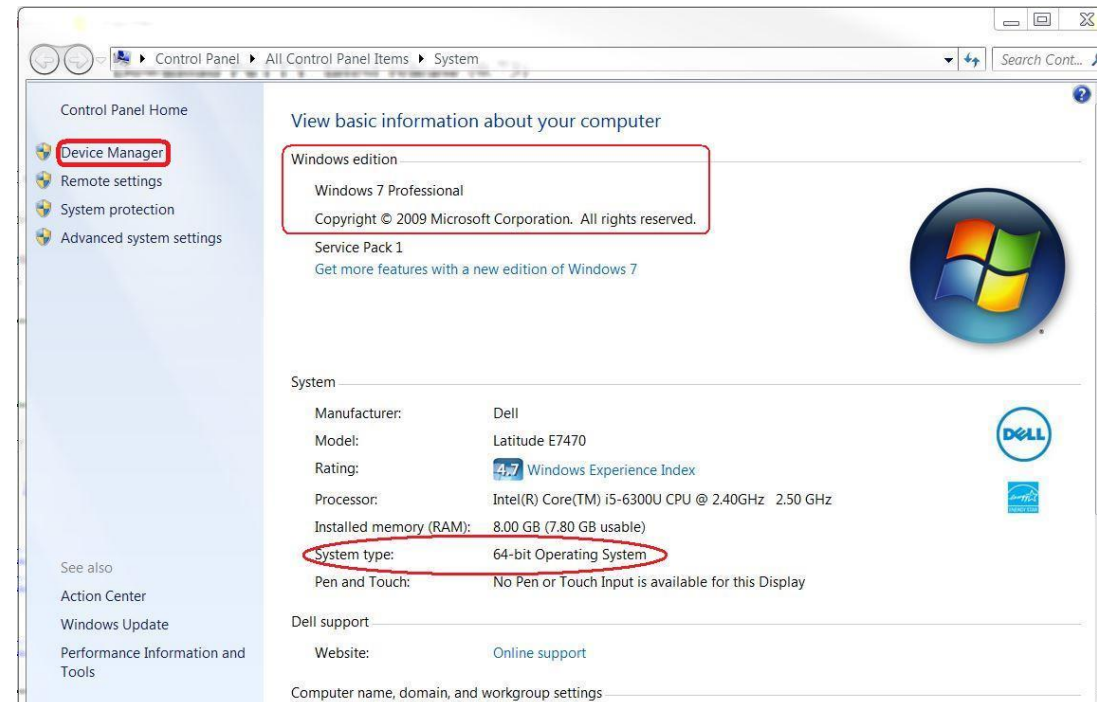
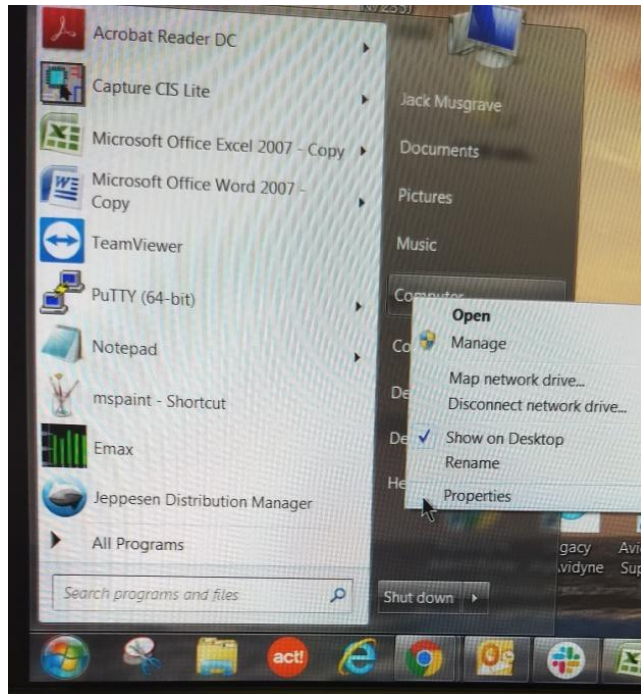
Any Version of Windows is acceptable.

Your Laptop's Operating System

To find your Laptop's Version of Windows....(Win XP → Win 7)

In your Task Bar go to the START Icon....

LEFT click,  RIGHT Click on “Computer”, LEFT Click on “Properties”

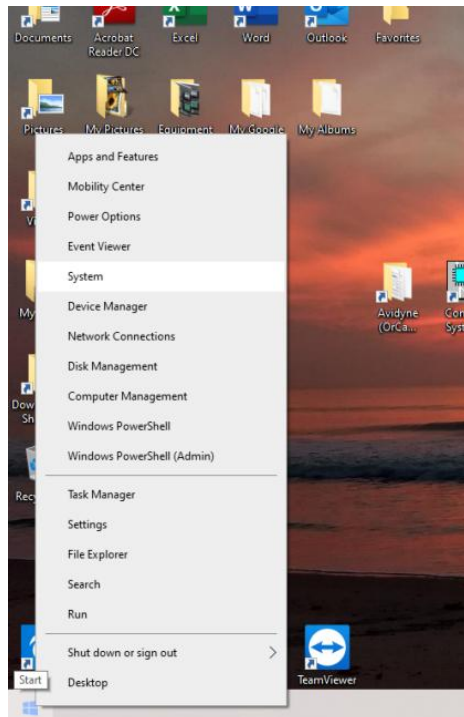


Your Laptop's Operating System

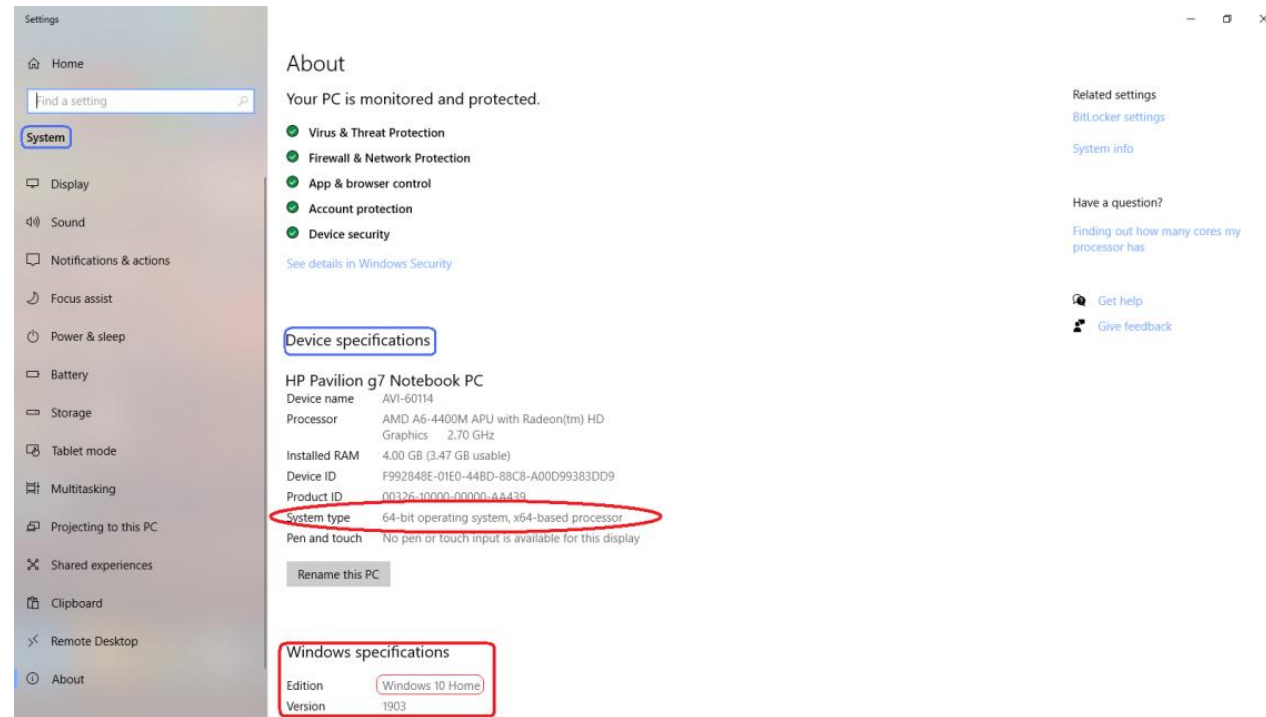
To find your Laptop's version of Windows.... (Win 8 & 10)

In your Task Bar go to the START Icon....

RIGHT click, 

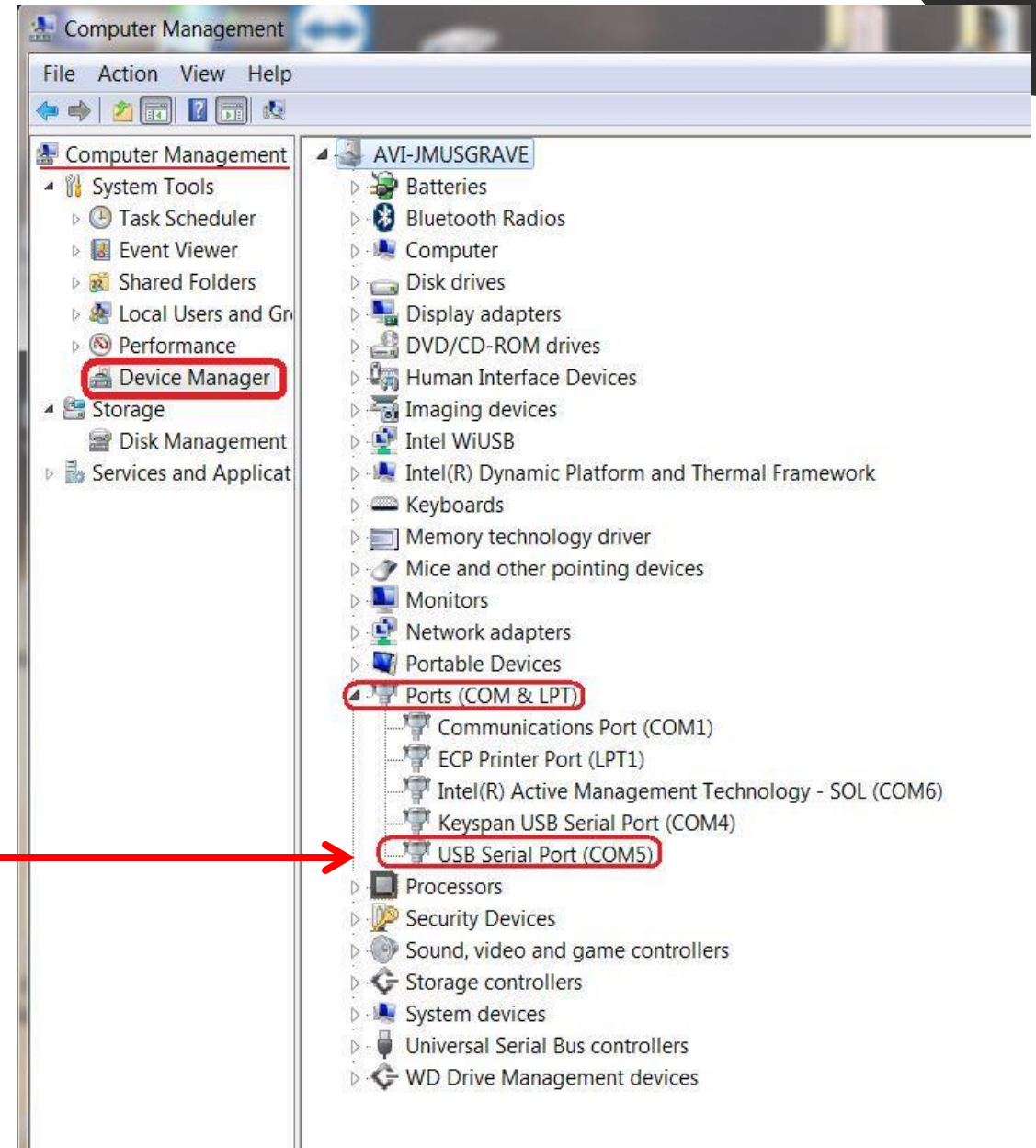


LEFT Click on **“System”**,



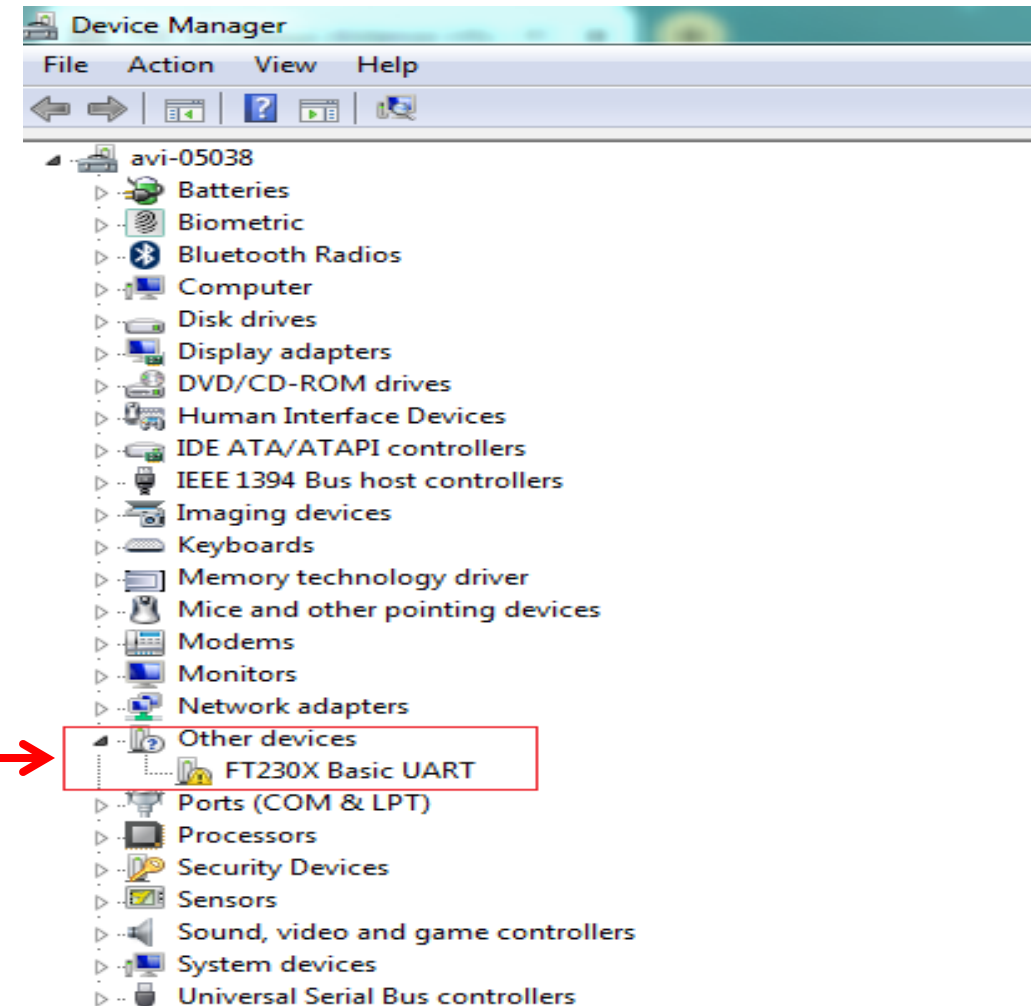
Laptop's Device Manager

- In order to determine what Com/USB Port the Laptop Assigned to the Attached Skytrax-100B, It will be necessary to Access the Laptops “**Device Manager**” Settings..
- If the Laptop already has the necessary **Device Drivers** installed, then it will assign a Com/USB Port to the Skytrax-100B



Laptop's Device Manager

- If the Laptop **Does NOT** have the necessary Device Drivers already installed, then it will question the type of Micro-Processor to establish Communication with. **The appropriate Device Driver will need to be install onto the Laptop.**



Service Information Letter

Service Information Letter “SIL” 606-00190-001

This Service Information Letter (SIL) advises installers of Avidyne SkyTrax100B PN 700-00190-100 of the availability of FDTI drivers required to program and configure SkyTrax100B receivers



ST-100B Driver 606-00190-001-rev0.pdf

Skytrax 100B Device Drivers

- The attached driver programs may be required in order for your computer to recognize the Com/USB port connected to the Skytrax 100B. The attached drivers are for Windows based machines only.

- CDM21226



CDM21226_Setup-Win 7 and up.zip

- CDM20824



CDM20824_Setup-Win XP-Vista.zip

Serial Interface

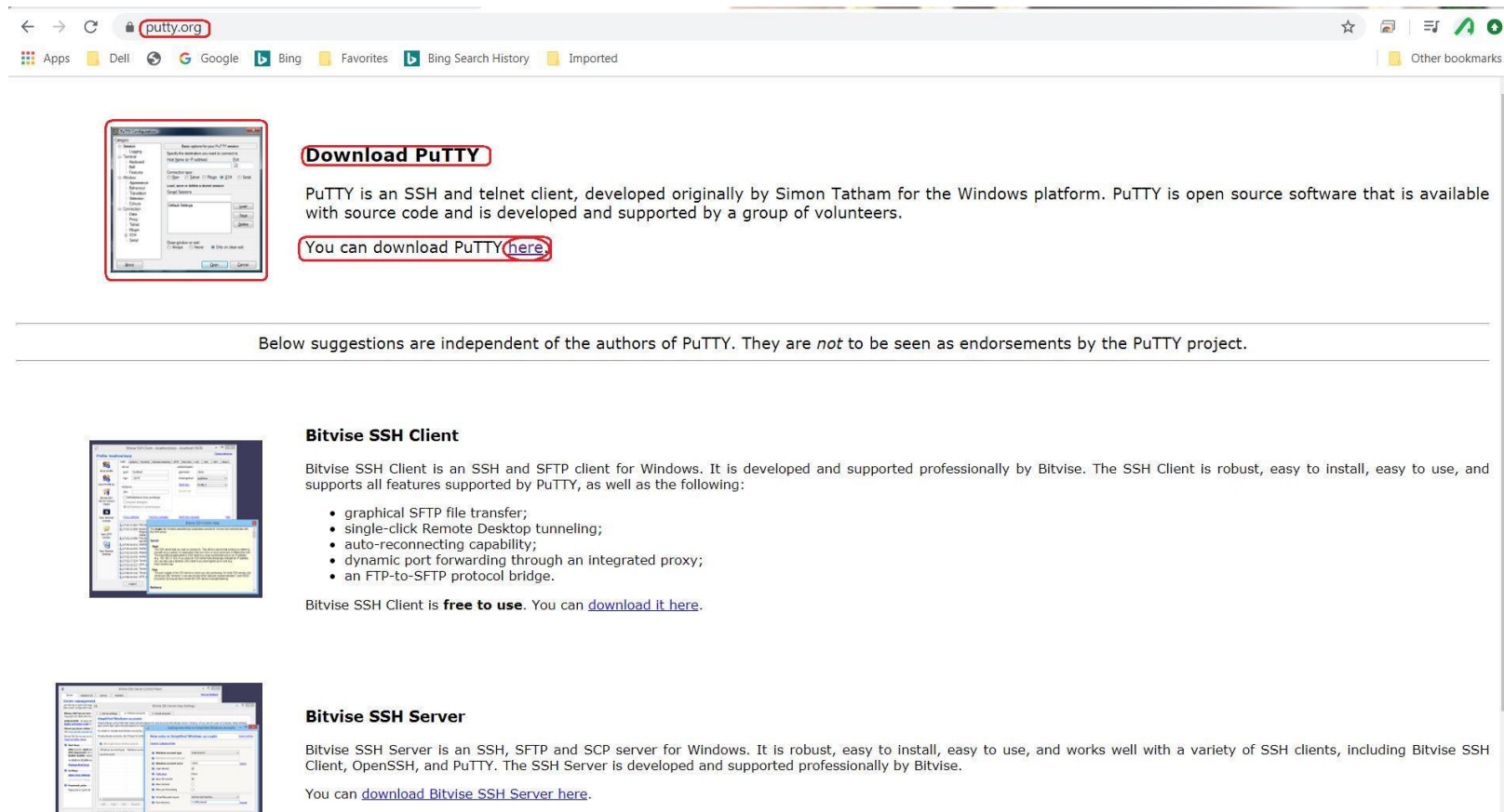
A Serial Interface Program is needed to establish “communications” with the Skytrax-100B.

We recommend the Program called “**PuTTY**”. It is a SSH and telnet client for Windows.

“PuTTY” is a No-Cost open source software.

Serial Interface Program

The “PuTTY” Software is available at www.putty.org



The screenshot shows the PuTTY.org website in a web browser. The address bar shows 'putty.org'. The page has a navigation bar with links to Apps, Dell, Google, Bing, Favorites, Bing Search History, and Imported. Below the navigation bar, there is a section titled 'Download PuTTY' with a red box around the title. The text describes PuTTY as an SSH and telnet client developed by Simon Tatham. A red box highlights the text 'You can download PuTTY [here](#).' Below this, a disclaimer states: 'Below suggestions are independent of the authors of PuTTY. They are *not* to be seen as endorsements by the PuTTY project.' Further down, there are two sections: 'Bitvise SSH Client' and 'Bitvise SSH Server'. Each section includes a small image of the software interface, a description of the software, a list of features for the client, and a link to download the software.

Download PuTTY

PuTTY is an SSH and telnet client, developed originally by Simon Tatham for the Windows platform. PuTTY is open source software that is available with source code and is developed and supported by a group of volunteers.

You can download PuTTY [here](#).

Below suggestions are independent of the authors of PuTTY. They are *not* to be seen as endorsements by the PuTTY project.

Bitvise SSH Client

Bitvise SSH Client is an SSH and SFTP client for Windows. It is developed and supported professionally by Bitvise. The SSH Client is robust, easy to install, easy to use, and supports all features supported by PuTTY, as well as the following:

- graphical SFTP file transfer;
- single-click Remote Desktop tunneling;
- auto-reconnecting capability;
- dynamic port forwarding through an integrated proxy;
- an FTP-to-SFTP protocol bridge.

Bitvise SSH Client is **free to use**. You can [download it here](#).

Bitvise SSH Server

Bitvise SSH Server is an SSH, SFTP and SCP server for Windows. It is robust, easy to install, easy to use, and works well with a variety of SSH clients, including Bitvise SSH Client, OpenSSH, and PuTTY. The SSH Server is developed and supported professionally by Bitvise.

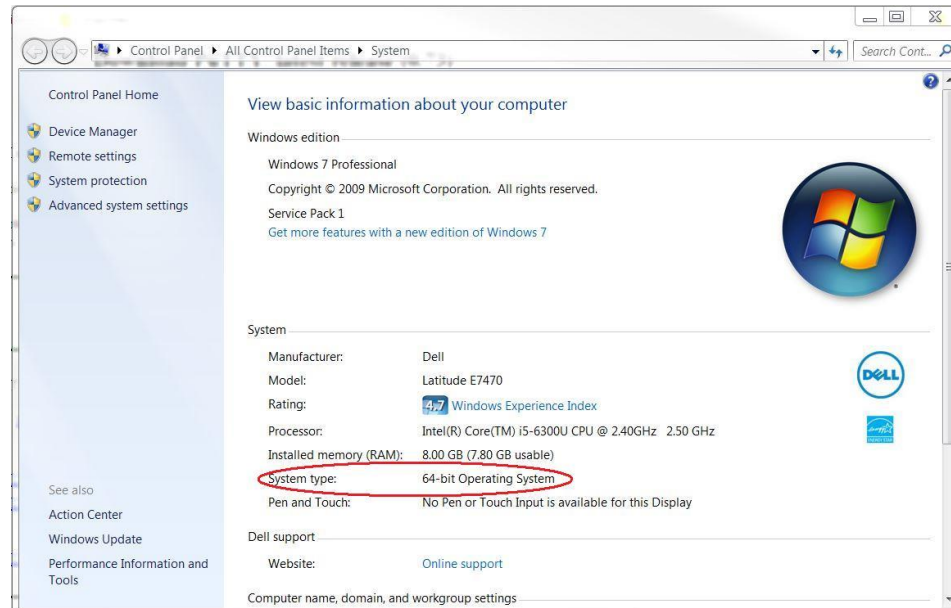
You can [download Bitvise SSH Server here](#).

“PuTTY” Serial Interface Program Selection

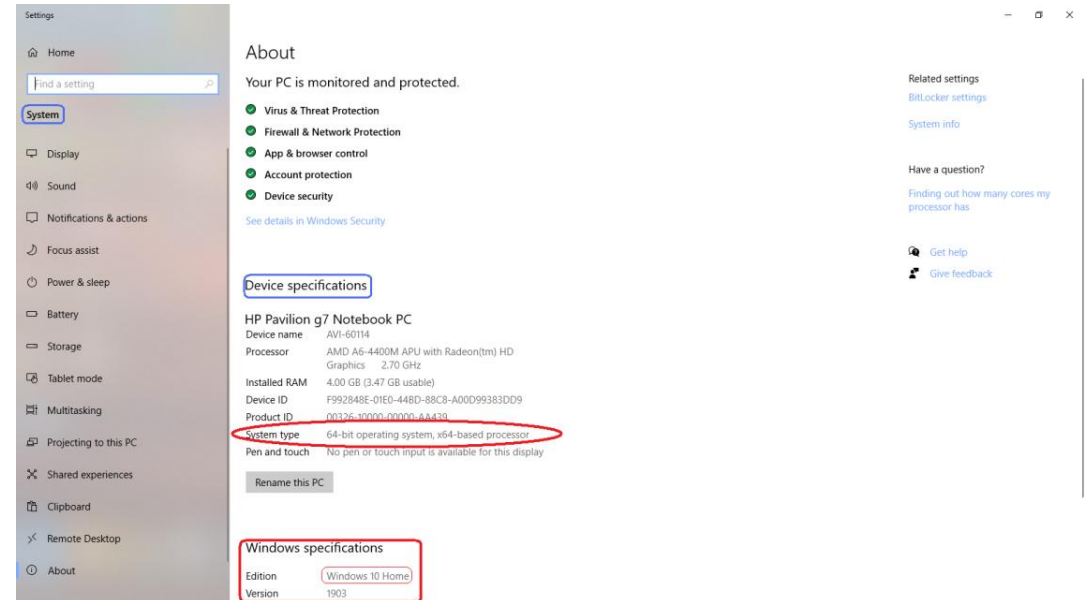
Be sure to select the proper MSI (‘Window Installer’) for your computer’s properties....

System Type: 32 or 64 – Bit Operating System

WIN XP Thru 7

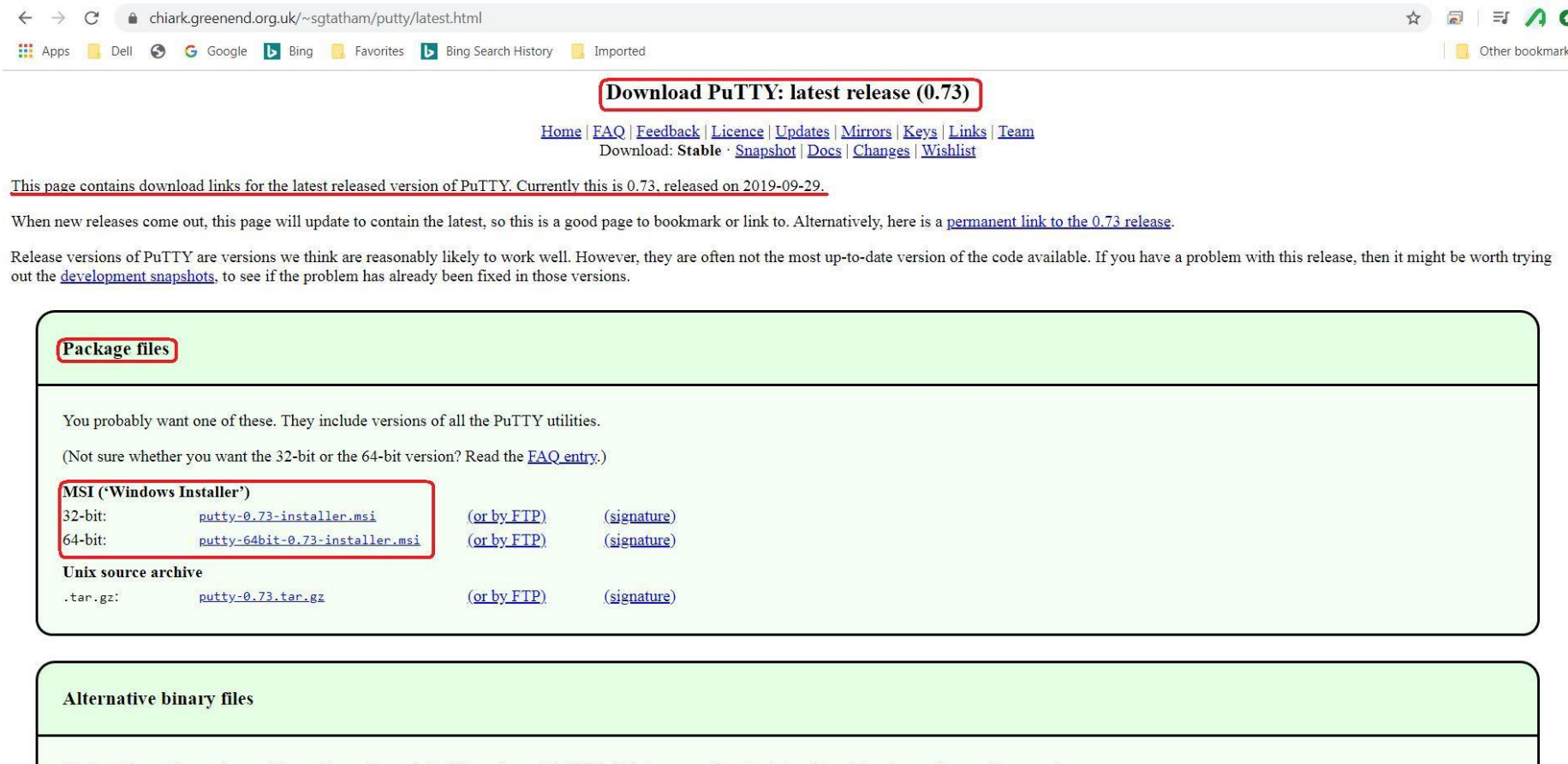


WIN 8 Thru 10



“PuTTY” Serial Interface Program Download

<https://www.chiark.greenend.org.uk/~sgtatham/putty/latest.html>



The screenshot shows a web browser window with the address bar displaying `chiark.greenend.org.uk/~sgtatham/putty/latest.html`. The page title is "Download PuTTY: latest release (0.73)". Below the title are navigation links: [Home](#), [FAQ](#), [Feedback](#), [Licence](#), [Updates](#), [Mirrors](#), [Keys](#), [Links](#), and [Team](#). There is also a "Download:" section with links for [Stable](#), [Snapshot](#), [Docs](#), [Changes](#), and [Wishlist](#). A paragraph states: "This page contains download links for the latest released version of PuTTY. Currently this is 0.73, released on 2019-09-29." Another paragraph explains that the page updates with new releases and provides a [permanent link to the 0.73 release](#). A third paragraph mentions that release versions are chosen for reliability but may not be the most up-to-date code, and suggests checking [development snapshots](#) if a problem occurs. The "Package files" section contains the text: "You probably want one of these. They include versions of all the PuTTY utilities. (Not sure whether you want the 32-bit or the 64-bit version? Read the [FAQ entry](#).)" It lists two MSI installers: "32-bit: [putty-0.73-installer.msi](#) (or by FTP) (signature)" and "64-bit: [putty-64bit-0.73-installer.msi](#) (or by FTP) (signature)". It also lists a "Unix source archive" as ".tar.gz: [putty-0.73.tar.gz](#) (or by FTP) (signature)". The "Alternative binary files" section is partially visible at the bottom.

Download PuTTY: latest release (0.73)

[Home](#) | [FAQ](#) | [Feedback](#) | [Licence](#) | [Updates](#) | [Mirrors](#) | [Keys](#) | [Links](#) | [Team](#)
Download: [Stable](#) · [Snapshot](#) | [Docs](#) | [Changes](#) | [Wishlist](#)

This page contains download links for the latest released version of PuTTY. Currently this is 0.73, released on 2019-09-29.

When new releases come out, this page will update to contain the latest, so this is a good page to bookmark or link to. Alternatively, here is a [permanent link to the 0.73 release](#).

Release versions of PuTTY are versions we think are reasonably likely to work well. However, they are often not the most up-to-date version of the code available. If you have a problem with this release, then it might be worth trying out the [development snapshots](#), to see if the problem has already been fixed in those versions.

Package files

You probably want one of these. They include versions of all the PuTTY utilities.
(Not sure whether you want the 32-bit or the 64-bit version? Read the [FAQ entry](#).)

MSI ('Windows Installer')

32-bit:	putty-0.73-installer.msi	(or by FTP)	(signature)
64-bit:	putty-64bit-0.73-installer.msi	(or by FTP)	(signature)

Unix source archive

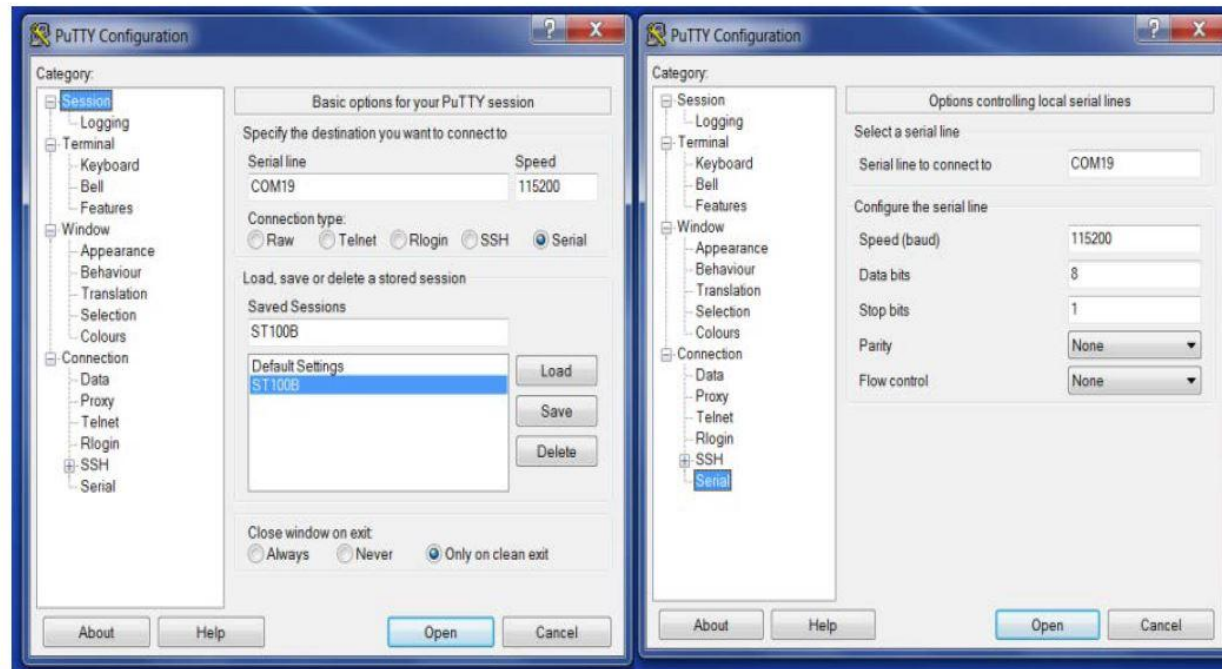
.tar.gz:	putty-0.73.tar.gz	(or by FTP)	(signature)
----------	-----------------------------------	-------------	-------------

Alternative binary files

“PuTTY” Configuration

- Once you Establish the Com Port that your laptop assigned to the Skytrax-100B, then you are ready to configure the Serial Interface Connection..

When the PuTTY configuration box appears, click on Session, type in SKYTRAX100B in the Saved Sessions box, select Serial radio button, type in the actual serial line used. (Caution, PuTTY Default comes up as COM1).

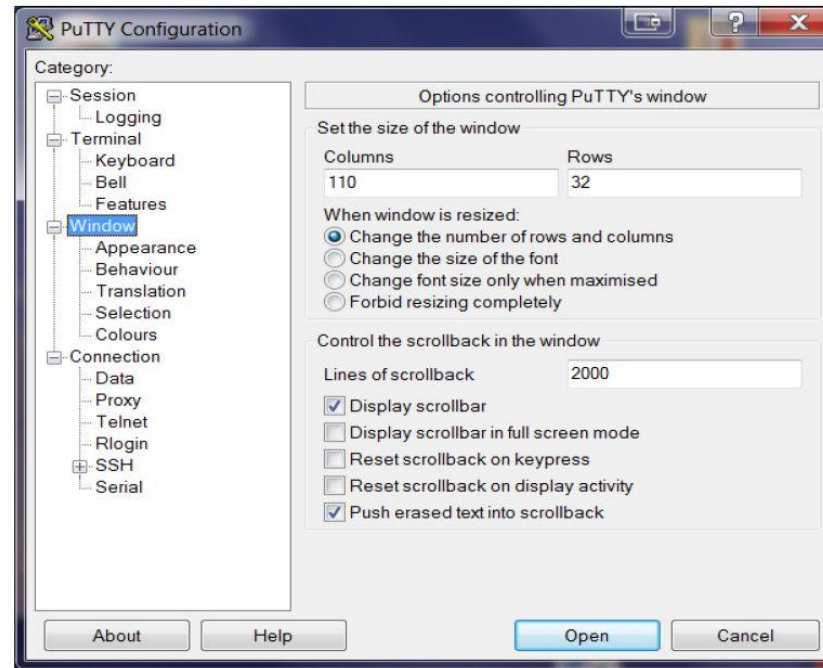


“PuTTY” Configuration

- In the “Window” Tab set the Number of Columns to 110 and Rows to 32.

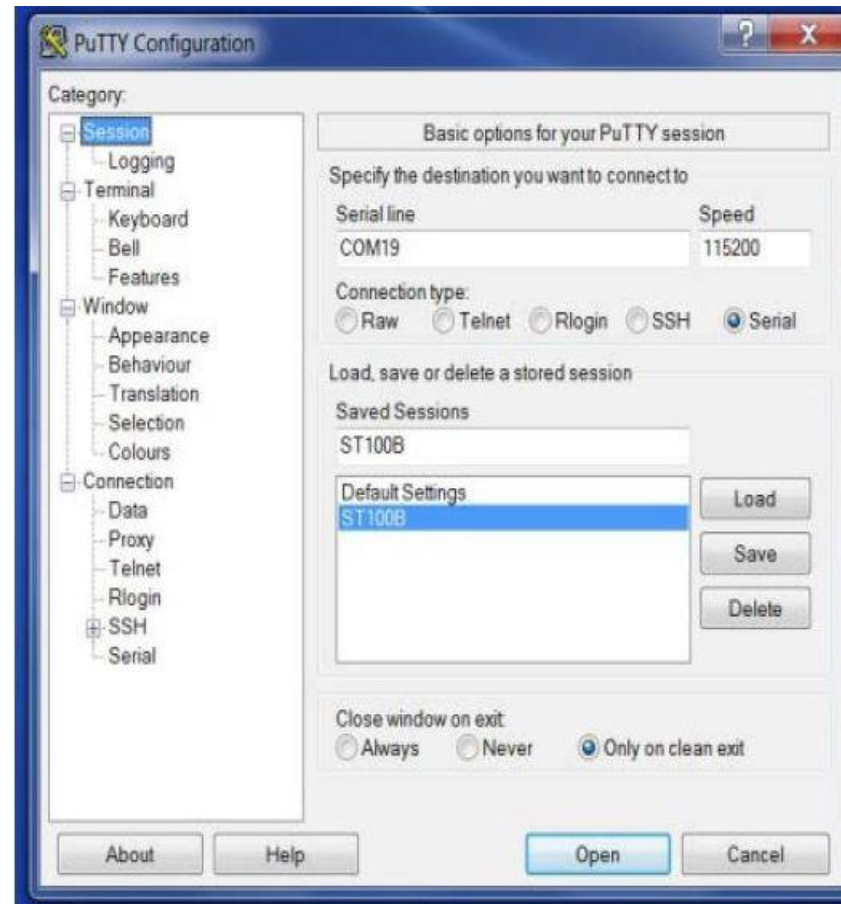
Avidyne SkyTrax Series Installation Manual

10. To expand the dialog box on PuTTY, go to window, enter 110 columns, 32 rows



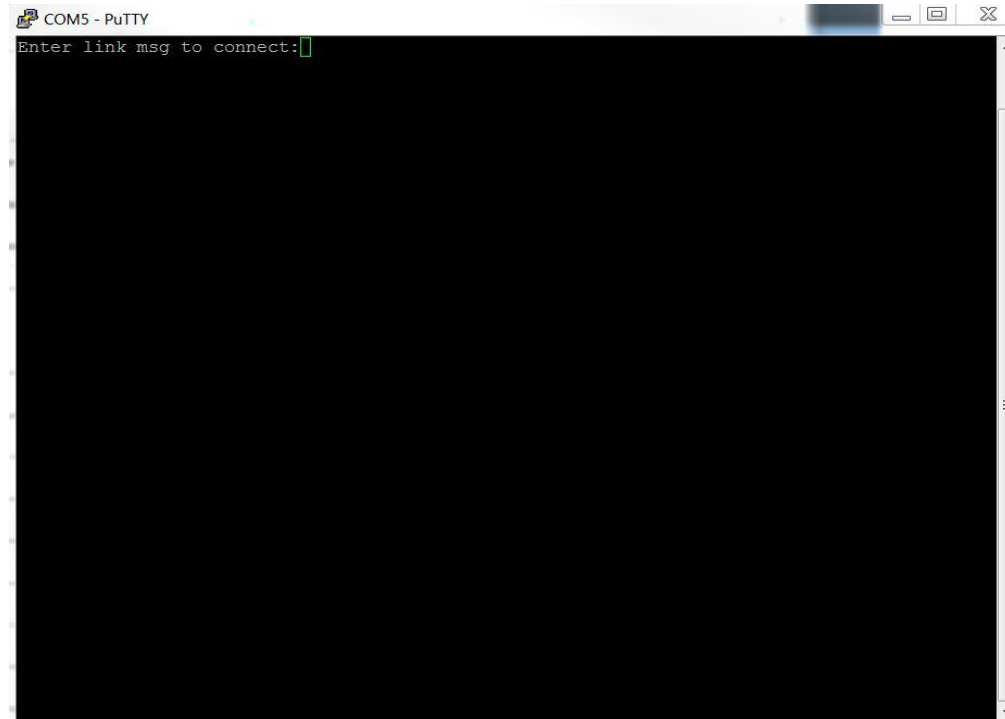
“PuTTY” Configuration

- Insure that you have Saved your Settings. Load the Session and Select “OPEN”



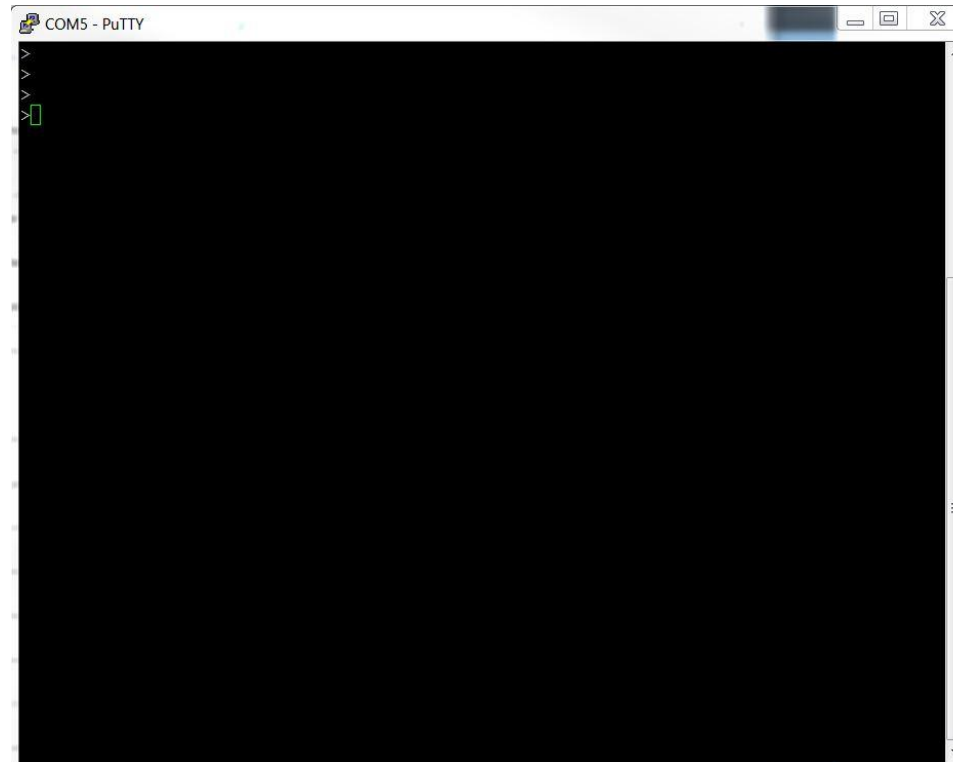
“PuTTY ← → Skytrax-100B” Connection

- Power on the Skytrax-100B and wait for the unit to complete the boot sequence.
- Inside the dialog box window, you should see the message "Enter link msg to connect"
(this may take up to 20 seconds to appear after starting PuTTY and the SKYTRAX100B).



“PuTTY ← → Skytrax-100B” Connection

- You must have a clear field after the “Enter link msg to connect” before quickly typing in “command” for Command Interface access.
- Once the link is established the PuTTY Screen will display a > “carrot” for each press of the enter key.





Interface Established

- This concludes the discussion on establishing the interlink to the Command Interface Menu of the Skytrax-100B
- The procedure for Setting the Interface Configuration will be presented in another presentation.
- If you have any question please do not hesitate to contact techsupport@avidyne.com



ALVIDYNE

For pilots who know the difference...

Thank You