

# Remote Scout 4G Cellular Outdoor Camera

---

*User's Manual*



Our *Remote Scout 4G Cellular Outdoor Camera* is one of the easiest cameras to set-up with wireless connectivity, and it is ready to use out of the box. Our 1080p FHD Outdoor camera shoots video at 30FPS and features customizable full color resolution from 5MP, 8MP or 12MP. Adjustable PIR sensitivity with a range of 65 feet and 57 No-Glow IR LEDs capture crisp video in total darkness. The **Remote Scout 4G Cellular Outdoor** camera runs on 12AA batteries (not included). Using our free mobile application “Trail Camera” you can send a command to trigger the camera to send an image to your email address. All images and video recordings are stored to an SD Card (not included). Up to 32GB of memory is supported.

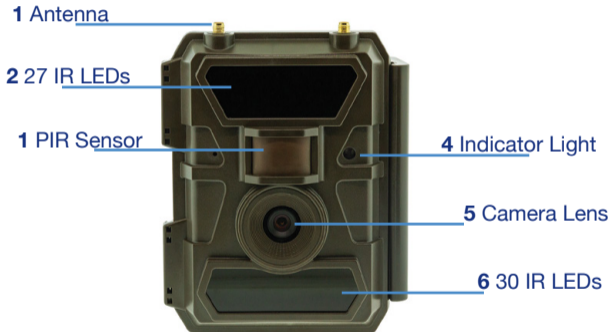
Images **ONLY** are sent to email via the 4G cellular network, video is stored on the inserted SD card.

#### **In the Box:**

you will find the Remote Scout 4G Cellular Outdoor camera, (2) Antennas, Camera Strap, USB Cable, and this user’s manual.



## Camera Functions and Features





**8** SD  
Card Slot

**9** USB Port

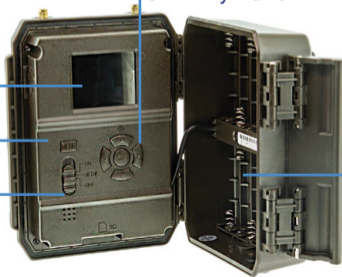
**12** Navigation Buttons/  
OK Entry Button

**10** LCD Screen

**11** Menu Button

**12** Power On/ Off/  
Set-Up Switch

**13** Battery  
Slot



## Getting Started

The Remote Scout Camera will already have the SIM Card inserted and programmed. We recommend you use NiMH batteries for better performance on battery life. Insert the SD memory card with gold contacts facing downward. Next screw both antennas onto the top of camera. Then you will insert 12 AA batteries.

*Note:* Please use high-quality AA batteries in order to protect battery cells from corrosion caused by leaked acid. If using DC power, REMOVE batteries before doing so. We recommend you use the included cable with a (12V/2A) adapter (not included).

## Camera Menu

Set-Up mode, press “Menu” once to enter camera setting menu; to navigate setting interface by pressing “←”, “↑”, “→”, or “↓”, press “OK” for selection, “Menu” to exit to previous page, and “Menu” to switch alpha/digits/symbols.

*Note:* For settings, you’ll need to press “Menu” to save & exit the configuration, after pressing “OK” to confirm; (Cam ID, Delay, Time Lapse, Timer, Password etc.)



## Cam

---

### Settings

---

### Programmable Options

---

#### Cam ID

Select “ON”, press “OK”, to set 12 digits/ alphabets for each camera. This function can help the user identify which photos are from which camera.

#### Cam Mode

Photo, Video, PIC+VIDEO

- 1) Photo: camera shoots photos only based on configured Multi-shot & Image Size settings;
- 2) Video: camera shoots videos only based on configured Video Length/Size settings;
- 3) “PIC+VIDEO”, camera shoots photo(s) first, then video upon same trigger event based on Video Length/Size and Multi-shot/ Image Size user configured settings;

#### Flash LED

All/Part

All: all 57pcs IR LEDs will work in dark environment;  
Part: Bottom 30pcs IR LEDs will be turned off.

#### Image Size

5MP (2560\*1920), 8MP (3264\*2448), 12MP (4032\*3024)



Night Mode

- a) Min. Blur: Short exposure time to minimize motion blur for better image quality; shortened IR flash range;
- b) Max. Range: Longer exposure time to extend IR flash range for better night vision; lower image quality;
- c) Balanced: combination of above 2 options;

Multi-shot  
Video On

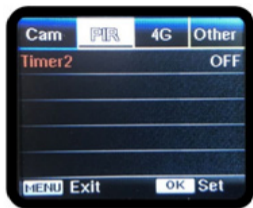
Programmable 1~5 photos per trigger

Video Size

FHL-1080P (1920\*1080), HD-720P (1280\*720), WVGA (848x480)

Video length

05~59 Secs



## PIR

---

Settings

Programmable Options

PIR Switch

OFF/ON

*Note:*

- a) PIR Switch off, camera will not be able to take photo/ video per motion;
- b) PIR Switch on, camera is able to take photos/ videos per motion even when Time Lapse is ON.

## Sensitivity

High, Middle, Low

Higher sensitivity 1) is more sensitive to movements by smaller subjects; 2) has longer detection distance; 3) makes it easier for sensor to detect difference between body heat and outdoor temperature; 4) easier to trigger camera to record. In high temperature environment, body heat of subjects and environment temperature is hard to identify by camera, suggest setting High.Flash LED

## Delay

Select “ON”, press “OK”, to set a time interval between photos or videos upon motion detection.

Example: Camera will wait 1 minute between photo/video recordings with motion if pre-set time interval is 00:01:00  
Configurable delay time: 00:00:03~23:59:59. Select “ON”, press “OK”, to set the interval; camera will shoot pics or video clips automatically upon the interval set by the user.

## Time Lapse

Object motion can still trigger the camera to take photos/videos if PIR Switch is ON.

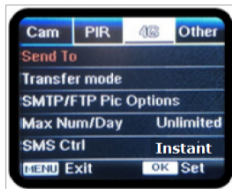
Configurable interval: 00:00:03~23:59:59.

Timer1

Select “ON”, press “OK”, to set the beginning time and end time (hour/minute); camera will only work during the time period set by the user. *i.e.: 15:00 – 18:00; camera only works during 15:00 – 18:00*

Timer2

Select “ON”, press “OK”, to set the beginning time and end time (hour/minute); camera will only work during the time period set by the user. *i.e.: 15:00 – 18:00; camera only works during 15:00 – 18:00*



## SMTP

---

Camera comes with default SMTP setups; you only need to enter receiving email accounts in “Send to” field. Please finish setups below if you’d like to use your own SMTP server.

1) Enter your mailbox server IP;

*i.e.: Hotmail IP: smtp.live.com; Gmail IP: smtp.gmail.com;*

2) Enter your mailbox port;

Port of most mailboxes is 25; enter your mailbox corresponding port.

3) Enter your mailbox password access.

*Note: 1.* SMTP only sends photos to preset emails; if SMTP is entered with wrong information, then photos from camera will not be received via email

*2.* MMS stops sending photos to email when SMTP is set to work.

## FTP

1) Enter your FTP server IP; *i.e.: FTP Server IP: ftp://dianwan2008.gicp.net/Enter: dianwan2008.gicp.net*

2) Enter your FTP server port; Port of most FTP servers is 21; enter your FTP server corresponding port.

3) Enter your FTP server password access.

*Note: FTP only uploads photos to preset FTP account; if FTP information is entered wrong, then FTP account will not be able to receive photos from camera.*

Send To (4G model is able to send photos and videos to your emails/ FTP account)

Email                                      Enter recipients' email accounts (1~4)

Transfer mode: this function allows the camera to send photos or videos (Video Function is not operational) Photos will transfer to email address entered in Send to option.

Photo                                      ON/ OFF

Video                                      ON/ OFF

SMTP/ FTP Pic Options

Pic Size: Small/ Bigger/ Original; Pictures sent via SMTP and FTP are in optional sizes including Small (640\*480), Bigger (1920\*1440), or Original (5M/ 8M/ 12M based on the Image Size you set below CAM)

Multi-shot Send: 1<sup>st</sup>/2<sup>nd</sup>/3<sup>rd</sup>/4<sup>th</sup>/5<sup>th</sup> Pic; this function works with Multi-shot. i.e.: Multi-shot is set as 5P; and you choose 1<sup>st</sup> Pic and 3<sup>rd</sup> Pic in Multishot Send. Then the 1<sup>st</sup> photo and 3<sup>rd</sup> photo taken from the 5 pics multi-shot will be sent out to your email(s) or FTP account.

- Note:*
1. Only 1<sup>st</sup> Pic (640\*480) will be sent if the available network is only 2G;
  2. Only 1<sup>st</sup> Pic (640\*480 or 1920\*1440) will be sent if the available network is only 3G;
  3. 1<sup>st</sup> to 5<sup>th</sup> Pics (640\*480 or 1920\*1440) all can be sent with 4G network; for original size pics (5/8/12MP), only 2 pics can be sent with 4G network

*Note:* 1. Camera will only send photos to preset email(s) via SMTP

2. Camera will only send photos to preset email accounts via SMTP if SMTP is ON.

Max Num/Day

Default: unlimited;

Optional: 1~99

i.e.: user chooses 50, then camera will only send (Photos/Videos) 50 times every day. Each time, camera will send to all entered emails/ phones/ FTP accounts. All the rest photos/ videos upon triggers will only be stored in SD card.

## SMS Ctrl

1) Daily: (Suggest for AA battery power)

Camera will only be able to change & save setups remotely when camera sends daily report.

2) Instant: (Suggest using when Power adapter is connected as this option will consume large amounts of battery power.)

Camera 4G module stand-by all the time; camera setups can be changed and saved whenever you send the remote SMS setup commands.

## Daily Report

1) OFF;

2) ON; to enter a time when you want camera to send you the Daily Report; Contents contain in Daily Report: Device IMEI Number, CSQ (Signal Strength): 0~31, Camera ID, Temperature, Date & Time, Battery Left Volume, SD Card Info, Total Pics Taken by Cam, Send Times

## GPS

ON/ OFF. With GPS turned ON, the GPS location stamps on every picture taken;

*Note:* If GPS signal is weak, GPS info will not be shown on stamp until the GPS signal gets stronger.





## Other

---

Language  
Date/Time

English

Auto/Manual

Auto: camera will synchronize data/time after you enter your time zone info;

Manual: manually set date/time

date : month : year : hour : minute : second

*Note:* Please adjust camera date/time to ensure functions work as expected.

Stamp

Programmed camera ID, moon phase, temperature, date, and time on photo

Battery Type	Alkaline/ NI-MH Choose correct battery type for maximum camera performance.
Frequency	50HZ, 60HZ; improper settings may cause camera screen to flicker
SD Cycle	Select “ON”, press “OK”, camera will continue to record photos/videos by deleting earliest photos or video clips.
Password	Select “ON”, press “OK”, to enable password protection for your camera; supports passwords of 6 numbers/letters.
Reset	Select “Yes” to reset camera back to factory default settings
FW Update	Enter this menu to update camera firmware from SD card, complete by confirming “Yes” in the options.
About	Firmware version in camera (Version: / IMEI: / MCU:/ MOD:)

## Trail Camera Mobile Application

---

**Getting Started:** This Mobile application only sends commands that will trigger the camera to send images to your email address and/or change the settings to your device.



UNINSTALL

OPEN



Downloads



10



Photography



Similar

Trail cameras



WHAT'S NEW

Russian menu is available.

Compatible with Android and iPhone

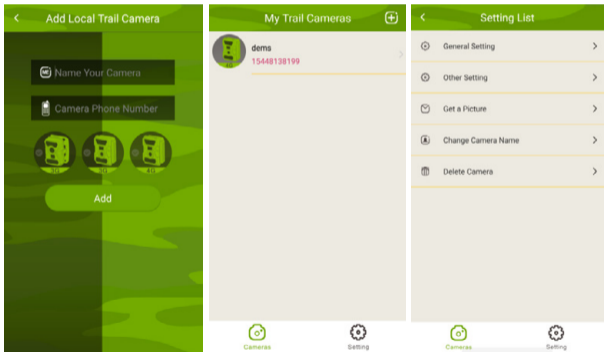
Go to Play Store (on Android) or the Apple App Store, search for “Trail Camera” and install the application. When installation is complete, the “trailcamera” icon will create a shortcut on your smartphone’s menu.

From here you will then access the application to enter your Remote Scout 4G Cellular Outdoor Camera Name and Number. (Number identifier was emailed to you after purchase.)

In the “ME” field you will enter your desired camera name

In the “” you will enter the Camera SIM Number that was sent to your email address on file.

Once the information is entered correctly, the camera will appear in the camera menu. Then you may continue to your menu options.



Access your Menu setting by touching the arrow next to the camera icon. You can then select general settings to enter up to two email addresses. *Note:* (Send to Phone field is disabled).

General Setting

SMS Remote Control Instant ▾

SMTP/FTP Pic Size Small ▾

Daily Report 00:00

Max Num No Limit

MMS

SMTP

FTP

Send

Send to Phone

Send to Phone1 Send to Phone2

Send to Phone3 Send to Phone4

Send

General Setting

Max Num No Limit

MMS

SMTP

FTP

Send

Send to Phone

Send to Phone1 Send to Phone2

Send to Phone3 Send to Phone4

Send

Send to Email

Joe@youknow.com Send to Email2

Send to Email3 Send to Email4

Send

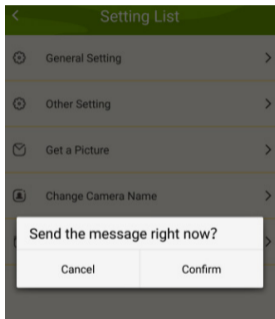
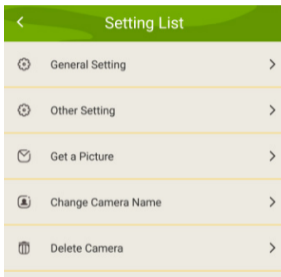
If you choose to send an image daily or instantly, make sure SMTP is enabled. The Enabled SMTP will allow the command to trigger a picture that will then be emailed to the address entered.

**Other Settings.** From here you can make changes and send them to the camera. Camera modes, nightvision, picture and video resolution, PIR sensitivity, video recording length, amount of images being taken in multi shot

mode, daily report on activity, and SD Cycle for overwrite on the SD card storage.

*Note:* You must click “Send” on the upper right hand corner so the settings can be applied to the camera.

Get a Picture, select the arrow, the following message “Send the message right now?” will appear, select confirm to send.



## Troubleshooting

---

### Camera did not capture any images

1. Check the “Sensor Level” (PIR sensitivity) parameter setting. For warm environmental conditions, set the Sensor Level to “High” and for cold weather, set the sensor for “Low.”
2. Try to set your camera up in an area where no heat sources are in the camera’s field of view.
3. Try to set camera away from foliage so you can prevent taking false images. i.e.: large trees.
4. At night, motion detector may detect beyond range of the IR illumination. Reduce distance setting by adjusting sensor sensitivity.
5. Rising sun or sunset can trigger sensor. Camera must be reoriented.
6. If a person/animal moves quickly, it may move out of the camera’s field of view before photo is taken. Move camera further back or redirect camera.



### Camera stopped taking images or has not taken images

1. Your SD Card has probably reached the max storage limit and is full. Enter your settings menu to turn on Cycle Recording to prevent your SD card from reaching its storage limit.
2. Check batteries to make sure that your alkaline, or NiMH AA, batteries' power is enough for the camera to work. You may want to change your batteries.
3. Make sure that the camera power switch is in the "On" position and not in the "Off" or "Test" positions.
5. Please format the SD card with the camera before using or when camera stops taking images.

### Night vision range doesn't meet expectations

1. 4 AA batteries are not able to support camera night vision ability; please install 8 AA batteries.
2. Please check to make sure that batteries are fully charged.

3. “Max Range” offers better IR flash range. Given IR flash range values are based on Max Range setting; so please adjust Night Mode to Max Range for better night vision flash range.

4. High-quality 1.5V NiMH rechargeable AA batteries can also offer much better IR flash range; alkaline batteries cannot deliver enough amperage to power the illuminator consistently at night.

5. To ensure accuracy and quality of image, please mount camera to dark environment without any obvious light sources.

6. Certain surroundings (like trees, walls, ground, etc.) within flash range can get you better images; please do not aim camera to total open field where there is nothing within IR flash range to reflect flashback.

