

Bush Baby Stealth Bottle Camera

SKU: BBSBottle



**USER MANUAL
FCC CE**

THANK YOU FOR PURCHASING THE BUSH BABY STEALTH BOTTLE .

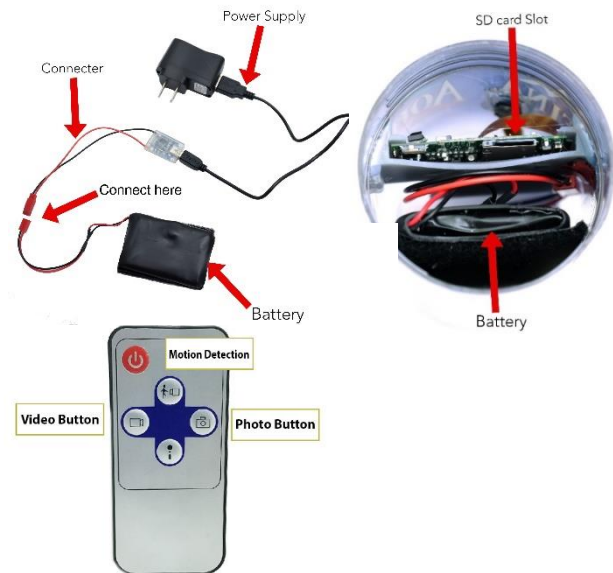
Please read this manual before operating the BushBaby Stealth Bottle Camera and keep it handy. Separate areas contain water on the top and bottom to give the impression of a full bottle. We advise that you NOT use this like a normal bottle of water by repeatedly drinking from it. This increases the chance that water may enter the electronic compartment.

Your purchase should include:

- 1 x BushBaby Stealth Bottle Camera
- 1 x Remote Control
- 1 x USB Cable
- 1 x Wall AC Adapter
- 1 x Charger adapter with indicator light
- 1 x User Manual

Contact 770-694-6923 if you are missing any of these components.

GET FAMILIAR WITH YOUR BUSH BABY STEALTH BOTTLE



BEFORE YOU START

To preserve battery power, your bottle will come with the battery connector **disconnected**. Before attempting to use the device be sure to connect the battery's connector to the circuit board power lead.

OPERATING THE BUSHBABY STEALTH BOTTLE CAMERA

IMPORTANT NOTICE: Allow the device to charge 6 – 8 hours before using.

MICROSD CARD SLOT

To access the MicroSD Card Slot you must unscrew the bottle right above the label.

1. Gently push the MicroSD Card into the slot. The gold contacts on the card will be inserted first, and they should face the main circuit board. You will

feel some spring resistance before the card clicks in to place.

2. **Never** force the card into the Card Slot under any circumstances, otherwise the Bottle unit or the MicroSD card itself will be damaged.
3. To remove the SD card, gently push the card in so that it clicks.
4. The internal spring tension will eject the card.

REMOVING AND CHARGING THE BATTERY

1. Remove battery from the bottle.
2. Disconnect the battery connector that is connecting the battery to the circuit board. Be careful not to pull on the wires as that could damage them.
3. Connect the connector on the battery to the connector on the charging adapter.
4. Plug the provided USB cable into the other end of the charging adapter.
5. Plug the other end of the USB cable into the wall AC adapter and plug it into the wall.

6. Wait 6 to 8 hours or **until** the indicator light turns from red to green. Until the light is green, the unit is not fully charged.
 - a. The larger the battery capacity, the longer it takes to charge.

HOW TO TURN ON THE BUSHBABY STEALTH BOTTLE CAMERA

1. Press the Power Button on the remote control one time. Your device is on when you see a blue light inside of the water bottle. The device is now in Standby mode.

HOW TO RECORD VIDEO ON THE BUSHBABY STEALTH BOTTLE CAMERA

1. In standby mode, press the Video button on the remote control one time. The blue indicator light inside of the device will flash three times and then turn off. Videos will be recorded continuously and saved in 20 minute intervals.

HOW TO SET UP MOTION DETECTION

1. In Standby mode, press the Motion Detection button one time. The blue indicator light will flash

three times and then turn off. The unit is now in motion detection mode and will begin recording video once motion is detected. There will be no LED indicator to indicate when motion is detected.

HOW TO STOP RECORDING

1. To stop recording, you will need to press the same button you used to begin recording. If you pressed the Video button, press the Video button once more. If you pressed the Motion button, press the Motion button once more. The device will reenter Standby mode (solid blue light).

HOW TO TAKE A PICTURE

1. While in Standby mode, press the Picture Button one time. When the indicator light flashes one time, 1 picture will be taken accordingly. The device returns to Standby mode once 1 picture has been taken.

OPTIONS FOR ACCESSING THE REMOVABLE STORAGE

1. Remove the MicroSD card and insert the card into a reader directly on your computer if available.
2. Use an external MicroSD card reader.

64GB and 128GB microSD cards will require special formatting to work. The device will not function with these cards if they are not properly formatted beforehand.

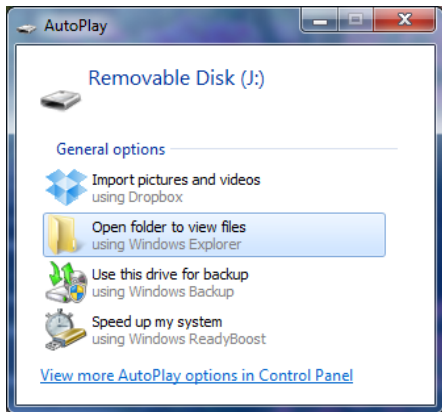
Visit www.mgidownloads.com/Software and download the “**guiformat.zip**” file. Extract the files and follow the instructions in the “64GB SD Card Formatting.pdf” document.

***IMPORTANT NOTICE:** Ensure that the bottle is off before inserting the MicroSD card, otherwise potential corruption of the card file(s) may occur.*

RETRIEVE THE FILES TO YOUR PC

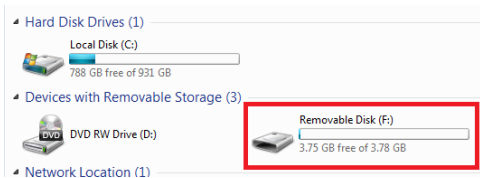
1. Connect the MicroSD card to your computer using the MicroSD card USB adapter

2. Locate “Removable Disk” inside the (My) Computer folder.
- AutoPlay Removable Disk > Open folder to view files



Or...

❓ Go to Start > Computer > Removable Disk



3. Open the Removable Disk drive.
 4. Open the DCIM folder.
 5. Open the folder featuring a sequence of numbers.
 6. Double click the file you want to view.
- VLC Player is recommended for watching videos.

If you are having video playback issues such as a completely black video recording or “squiggly lines”, we recommend you use VLC media player to play back the videos. It can be downloaded for free from www.videolan.org

COPYING AND DELETING YOUR FILES

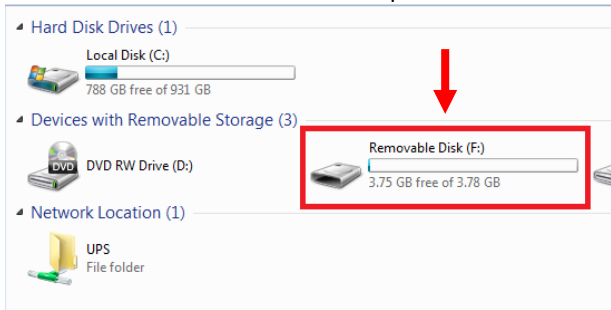
The video files created are just like any other file on your computer, and can be managed in the exact same manner.

- To save a file, you would want to select the file, right click your mouse on the file name, and then choose “Copy” from the menu. Next, go the location you want the save the file to. Right click your mouse, and then chose “Paste.” This will copy the file to your computer.
- To delete a file, right click your mouse on the file name and choose “Delete” from the menu. You can quickly select all of the files by pressing “CTRL+A” on your keyboard.
- If you are using MAC OS X, you must empty the trashcan after you delete a file. If this is not done, the SD card will fill with hidden files and the Bottle will no longer record new files.

SETTING THE TIME AND DATE ON THE VIDEO FILES

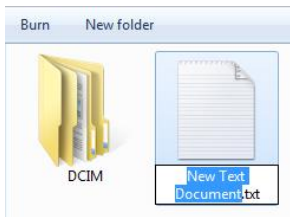
1. Visit <http://time.mgidownloads.com>
2. Choose “All Bush Baby Stealth” and your time zone in the dropdowns and click download.
3. Connect the MicroSD card to your computer
4. Right click and “cut” the downloaded time file
5. Locate “Removable Disk” inside the (My) Computer folder

a. Go to Start > Computer > Removable Disk

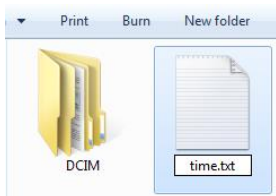


6. Open the Removable Disk drive
7. Right click with your mouse and paste the downloaded time file.
8. Alternatively, if you cannot get the above method to work, do the following:
9. Right click anywhere in the blank white space
10. Scroll down to “New”
11. Click “Text Document”
12. **Rename “New Text Document” as “time”**

The title must be in all lowercase letters!



Before Step 8



After Step 8

13. Open the text document
14. Enter the date/time in the following format
 - a. Example:
2016/08/08 15:00:00
15. Save the text document
16. Unplug the device from your computer.

Power on the device and begin a test recording to confirm date/time setting succeeded.

TROUBLESHOOTING

THE DEVICE WON'T TURN ON

- Charge the device for at least 6-8 hours before the first use.
- Make all charging cables are securely connected when charging

THE DEVICE ISN'T CHARGING

- Replace the battery or charging cable.
- If you are charging via a wall power source, you may need to charge via your PC. The A/C adapter might be bad.

THE DEVICE HAS CRASHED

- You need to reset the device.
 - o Disconnect and reconnect the battery.

MY COMPUTER DOESN'T RECOGNIZE THE DEVICE

- Try using a different USB slot on your PC.

THE SOUND OR VIDEO IS UNCLEAR

- The device needs charging.

THE INDICATOR LIGHT IS ON, BUT THE CAMERA WILL NOT RECORD VIDEO OR TAKE PHOTOS

- The SD card may be too small.
 - o Insert SD card between 4GB – 128GB.
- You may have a 64GB+ card and need to format it properly. Visit www.mgidownloads.com/Software and download the “**guiformat.zip**” file. Extract the files and follow the instructions in the “64GB SD Card Formatting.pdf” document.

THE INDICATOR LIGHT IS FLASHING RED/BLUE

- There is no SD card in the device.

OTHER PROBLEMS

- Call our technical support at **770-694-6921**

SPECIFICATIONS

Video Resolution	1920*1080
Video Format	AVI
Frames per Second	30
Vision Angle	75°
Motion Detection	Yes
Lux Rating	1LUX
Water Resistant	No
Battery Life	30 Hours
Type of Memory	MicroSD Card
Memory Capacity	4GB – 128GB
USB Interface	2.0 USB
Player Software	VLC recommended
Operating Systems	Windows XP & Up Mac OSX 10.5 & Up Linux

QUALITY CONTROL CHECKLIST

- ☐ Remote
- ☐ Wall AC Adapter
- ☐ USB to Micro-B Cable
- ☐ MicroSD Card ____GB
- ☐ MicroSD Card reader
- ☐ Charging Adapter with Indicator Light
- ☐ Bush Baby STEALTH Bottle
 - ☐ With Audio
 - ☐ Without Audio

QC Tech:

Date: _____