

Bush Baby Stealth Radar Detector

SKU: BBSRadarDetector



**USER MANUAL
FCC CE**

THANK YOU FOR PURCHASING THE BUSH BABY STEALTH RADAR DETECTOR

Please read this manual before operating the camera and keep it handy.

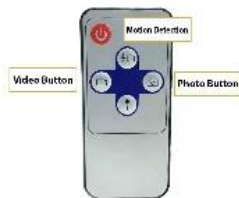
The BushBaby Stealth Radar Detector is the perfect way to keep an eye on your car when you're not around. This camera disguised as a normal radar detector can be pointed inside or outside of your car to catch anything from vandals to valets and cleaners. The dash mounted design gives you the perfect vantage point. Charge with the USB cord.

Your purchase should include:

- 1 x BBSRadarDetector
- 1 x Car mount
- 1 x Remote Control
- 1 x Car Charging Cable
- 1 x Instruction Booklet

Contact **770-694-6923** if you are missing any of these components.

GET FAMILIAR WITH YOUR BUSH BABY S RADAR DETECTOR



OPERATING THE BUSHBABY CAMERA

IMPORTANT NOTICE: Allow the device to charge 6 – 8 hours before using.

MICROSD CARD SLOT

1. The SD card slot is located on the side of the radar detector.
2. Gently push the MicroSD Card into the slot. The gold contacts on the card will be inserted first, and they should face the main circuit board. You will feel some spring resistance before the card clicks in to place.
 - a. **Never** force the card into the Card Slot under any circumstances, otherwise the unit or the MicroSD card itself will be damaged.
3. To remove the SD card, gently push the card in so that it clicks.
4. The internal spring tension will eject the card.

CHARGING THE BATTERY/OPERATING USING CAR CHARGER

1. To charge the battery, plug the charging cable into the unit and use the car adapter to charge it or plug the usb cord into the unit and then use the usb port on your computer or the included wall adapter to charge.
2. The unit may also be operated using the included car adapter as well.
3. Wait roughly 10 hours for it to charge.
 - a. The larger the battery capacity, the longer it takes to charge.

HOW TO TURN ON THE BUSHBABY CAMERA

1. Press the Power Button on the remote control one time. Your device is on when the led indicator turns on. The device is now in Standby mode.

HOW TO RECORD VIDEO ON THE BUSHBABY CAMERA

1. In standby mode, press the Video button on the remote control one time. The indicator light inside of the device will flash three times and then turn off. Videos will be recorded continuously and saved in 20 minute intervals.

HOW TO SET UP MOTION DETECTION

1. In Standby mode, press the Motion Detection button one time. The blue indicator light will flash three times and then turn off. The unit is now in motion detection mode and will begin recording video once motion is detected. There will be no LED indicator to indicate when motion is detected.

HOW TO STOP RECORDING

2. To stop recording, you will need to press the same button you used to begin recording. If you pressed the Video button, press the Video button once more. If you pressed the Motion button, press the Motion button once more. The device will reenter Standby mode (solid light).

HOW TO TAKE A PICTURE

1. While in Standby mode, press the Picture Button one time. When the indicator light flashes one time, 1 picture will be taken accordingly. The device returns to Standby mode once 1 picture has been taken.

OPTIONS FOR ACCESSING THE REMOVABLE STORAGE

1. Remove the MicroSD card and insert the card into a reader directly on your computer if available.
2. Use an external MicroSD card reader.

64GB and 128GB microSD cards will require special formatting to work. The device will not function with these cards if they are not properly formatted beforehand.

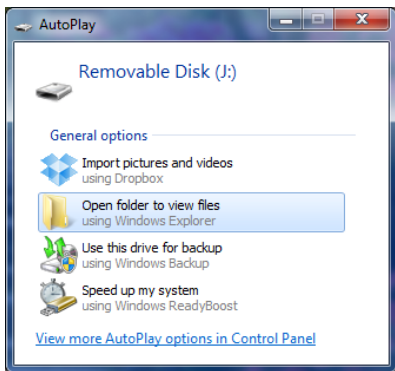
Visit www.mgidownloads.com/Software and download the “**guiformat.zip**” file. Extract the files and follow the

instructions in the “64GB SD Card Formatting.pdf” document.

IMPORTANT NOTICE: Ensure that the device is off before inserting the MicroSD card, otherwise potential corruption of the card file(s) may occur.

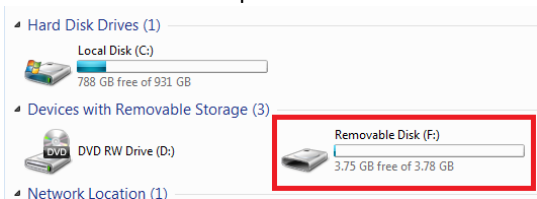
RETRIEVE THE FILES TO YOUR PC

1. Connect the MicroSD card to your computer using the MicroSD card USB adapter
2. Locate “Removable Disk” inside the (My) Computer folder.
 - AutoPlay Removable Disk > Open folder to view files



Or...

Go to Start > Computer > Removable Disk



3. Open the Removable Disk drive
4. Open the DCIM folder.
5. Open the folder featuring a sequence of numbers.
6. Double click the file you want to view.
 - VLC Player is recommended for watching videos

TROUBLESHOOTING

THE DEVICE WON'T TURN ON

- Make sure the power cable is securely plugged into a functioning electrical outlet or the battery is charged

THE DEVICE HAS CRASHED

- Press the reset button one time while the device is on

DEVICE CONTINUALLY RECORDS IN MOTION MODE

- Motion detection is measured by changing pixels during recording. Any kind of motion

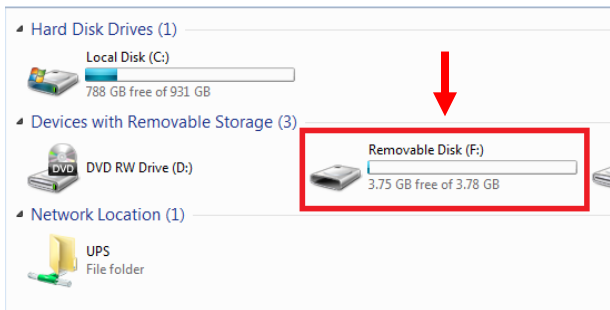
including shifting shadows or changing lighting conditions can set off motion detection. Try adjusting the motion detection sensitivity via the setup menu

OTHER PROBLEMS

- Call our technical support at **770-694-6923**

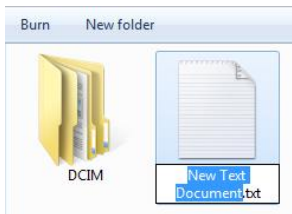
SETTING THE TIME AND DATE ON THE VIDEO FILES

1. Visit <http://time.mgidownloads.com>
2. Choose “All Bush Baby Stealth and your time zone in the dropdowns and click download.
3. Connect the MicroSD card to your computer
4. Right click and “cut” the downloaded time file
5. Locate “Removable Disk” inside the (My) Computer folder
 - a. Go to Start > Computer > Removable Disk

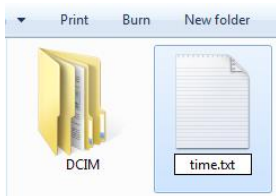


6. Open the Removable Disk drive
7. Right click with your mouse and paste the downloaded time file.
8. Alternatively, if you cannot get the above method to work, do the following:
9. Right click anywhere in the blank white space
10. Scroll down to “New”
11. Click “Text Document”
12. **Rename “New Text Document” as “time”**

The title must be in all lowercase letters!



Before Step 8



After Step 8

13. Open the text document
14. Enter the date/time in the following format
 - a. Example:
2016/08/08 15:00:00

15. Save the text document
16. Unplug the device from your computer.
Power on the device and begin a test recording
to confirm date/time setting succeeded.

SPECIFICATIONS

Video Resolution	1920x1080
Video Format	AVI
Frames per Second	30
Vision Angle	75°
Motion Detection	Yes
Lux Rating	1LUX
Water Resistant	No
Battery Life	30 Hours
Type of Memory	MicroSD Card
Memory Capacity	4GB – 128GB
USB Interface	2.0 USB
Player Software	VLC recommended
Operating Systems	Windows XP & Up Mac OSX 10.5 & Up

QUALITY CONTROL CHECKLIST

- ☐ Remote
- ☐ Car Mount
- ☐ Car Charging Cable
- ☐ MicroSD Card Reader
- ☐ BBSRadarDetector

QC Tech: _____

Date: _____