

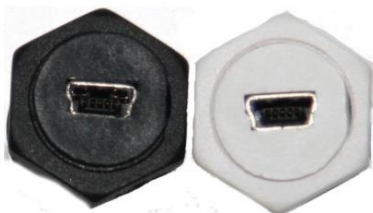
BushBaby Generation 2 Manual

TYPES OF BUSHBABY2

Storage:

Internal

- If your BushBaby uses internal storage, you will only have access to the USB port for charging and/or video retrieval.



(As seen with the smoke detector or electrical box)

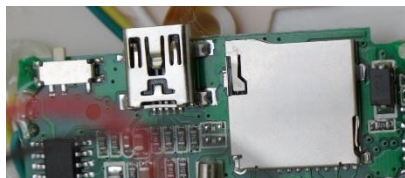
Removable

- If your BushBaby uses removable storage, you will have access to a MicroSD card slot.

IMPORTANT NOTICE: *MicroSD cards are required and your BushBaby will not record video without one.*



Some boards are sealed inside the device, so you only have access via ports. (As seen with the radar detector)



Some boards are accessible inside the device, so you will need to open it to gain access to the power switch, USB port, and MicroSD card. (As seen with the air freshener or tissue box)

Battery:

Charging Internal

- If your BushBaby uses an internal battery that needs periodic charging, you will have access to a USB port (as seen in any of the previous storage examples). Simply use the included AC adapter wall charger and USB cable to charge the device using this port.

IMPORTANT NOTICE: *Be aware that BushBaby cameras DO NOT record while charging.*

Plug-in

- If your BushBaby **always** needs to be plugged in (no battery), it will have a power cord on it or have its own set of power prongs.



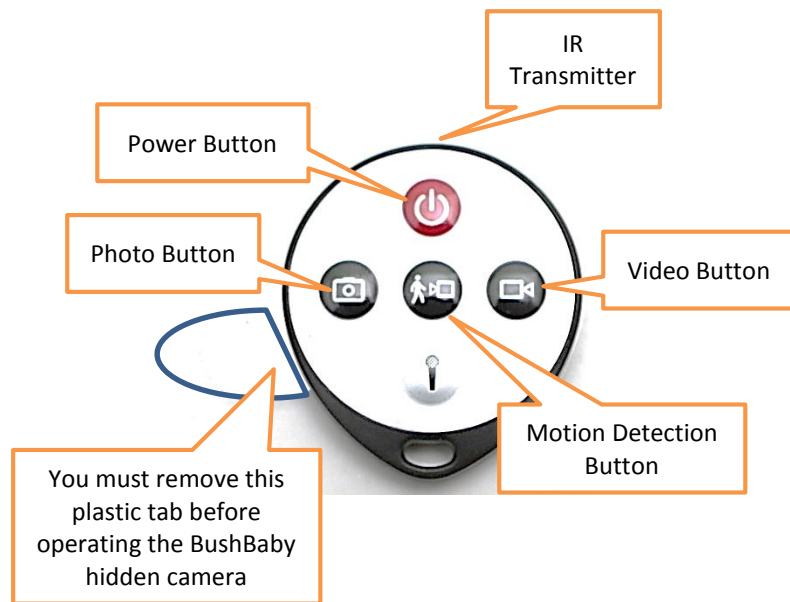
Above: As seen on the coffee pot or DVD player

Below: As seen on the BB2Outlet



Check the specific product description of the item you purchased to determine what type of storage it has and how your unit is powered.

GET FAMILIAR WITH YOUR BUSHBABY2 REMOTE



OPERATING THE BUSHBABY2

IMPORTANT NOTICE: Allow the device to charge **overnight** before using for the first time.

HOW TO TURN ON THE BUSHBABY2

1. Press the Power Button while holding the remote about 2 feet in front of the device.
 - The indicator light will turn on
 - If your BushBaby has internal storage, the light will be on the back of the device.
 - If your BushBaby has removable storage, the light will be near the MicroSD card slot.
 - The BushBaby is now in **standby mode**
 - Allow 5 seconds for initialization as the device will ignore all commands until initialization is complete.

HOW TO RECORD VIDEO

1. Ensure the device is in **standby mode**
2. Press the Video Button
 - The indicator light will blink 3 times and then turn off
 - The BushBaby is now recording continuous video

HELPFUL TIP: Video records in 20-minute intervals until you manually stop recording.

3. Press the Video Button again to stop recording and return to standby mode.

HOW TO USE MOTION DETECTION

1. Ensure the device is in **standby mode**
2. Press the Motion Detection Button
 - The indicator light will turn off when in motion detection mode
 - When the camera detects motion, the indicator light will blink three times and then turn off as recording starts

HELPFUL TIP: Video records in 3-minute intervals and then stops until motion is again detected.

3. Press the Motion Detection Button again to stop recording and return to standby mode.

IMPORTANT NOTICE: The blinking motion detection indicator light should not be an issue, as most electronic devices today have LEDs that blink or flash. If this is an issue the indicator can be covered, but if the indicator light is covered up, power and standby states cannot be determined easily.

HOW TO TAKE PHOTOGRAPHS

1. Ensure the device is in **standby mode**
2. Press the Photo Button
 - The indicator light will blink once
 - The BushBaby has taken a photograph

HOW TO SET THE TIME AND DATE STAMP (Windows Only)

1. Connect the device to your computer using the USB Cable
2. Turn on the BushBaby using the remote (the indicator light should turn on)
3. Go to <http://www.mgidownloads.com/>
4. Click on "WriteTime.exe" at the bottom of the page.

IMPORTANT NOTICE: *Some virus scanners may warn that this program contains a virus. This is a false-positive. The program is safe to use.*

5. Go to your web browser's default download location and open WriteTime.exe
6. Click "Run"
7. The program will automatically detect the device
8. Click "Update" to complete the time update.

HELPFUL TIP: *Most sealed units come with this software preloaded. The program will be in the root directory of the memory card in the DVR. If you cannot locate the file, follow the preceding steps.*

HOW TO RETRIEVE THE FILES

Retrieving the video files and photos from your BushBaby all depends on the type of storage your BushBaby uses.

Internal Storage Method

1. Locate the USB port on the product
 - You can find the USB port on the board or on the side, back, or bottom of the device. It is the same connection as the charging port.

IMPORTANT NOTICE: *The mounting of these devices are designed to be light and covert. They are therefore sensitive to excessive force and impact. If the USB cable is not inserting, please check the orientation of the cable. Do not force it.*

2. Connect the USB cable between your BushBaby and your computer

3. Turn on the BushBaby using the remote (the indicator light should turn on)
4. Locate "Removable Disk" inside the (My) Computer folder
 - AutoPlay Removable Disk > Open folder to view files
 - Or...
 - Go to Start > Computer > Removable Disk
5. Open the Removable Disk drive
6. Open the DCIM folder
7. Double click the file you want to view
 - VLC Player is recommended for watching videos

IMPORTANT NOTICE: *For units that use AC power, it is **required** that the product's power cord be plugged into an AC outlet to operate the DVR. The DVR **will not** run on USB power alone.*

Removable Storage Method

You can 1) use the same retrieval method as internal storage, 2) remove the MicroSD card and insert the MicroSD card into the reader directly on your computer if available, or 3) use an external MicroSD card reader.

64GB microSD cards will require special formatting to work. The device will not function with 64GB cards if they are not properly formatted. Visit www.mgidownloads.com/Software and download the "guiformat.zip" file. Extract the files and follow the instructions in the "64GB SD Card Formatting.pdf" document. (Windows only)

IMPORTANT NOTICE: *Do not insert or remove the SD card while the unit is recording or in standby mode. Doing so may cause data loss or file system corruption.*

MicroSD Card Slot

1. While supporting the other end of the board, slightly push the SD card in until you feel the spring resistance. If the card does not easily slide in check the card orientation, do not force it. Doing so may damage the unit or the card. The card will click in to place.
2. To remove the card, push the card in again. The card will click and the spring tension will push the card out.

BUSHBABY2 SPECIAL OPERATION NOTES

- If the memory card fills up while recording video, the oldest file on the card will be deleted and a new file will be created. Video recording will not stop once the card is full. Once the video file has been deleted in this manner, it cannot be recovered.
- The BushBaby2 line of devices are Mac OS X compatible. When you delete a file from the memory with a Mac, **you must then empty the Trash Can**. Failing to do so will fill the storage with hidden files that will prevent recording.
- If you are having video playback issues, we recommend you use VLC player, which can be found at www.videolan.org. It is a free program available for all popular operating systems.
- If you are seeing video stuttering, please copy the files to your computer first and play them back from there. Trying to play videos directly off the device when connected over USB may cause this issue.
- Devices with 90 Hour batteries will require overnight charging. The larger battery does have a longer recharge period.

SPECIAL NOTE ABOUT BUSHBABY BOTTLE PRODUCTS

If you have purchased a Bush Baby water or soda bottle, you will have one of two different types of lids.



The first type of lid is a simple screw that slips in and out from the base of the bottle.



The second type of lid is a hook that you must turn and then pull from the base of the bottle.

TECHNICAL SPECIFICATIONS

Resolution	1280*960 @ 30fps
Video Format	.AVI
Photo Format	.JPG
Vision Angle	62°
Motion Detection	6 meters for straight-line distance
Minimum Illumination	10LUX
Remote Operating Distance	15 meters
Scope for Sound (optional)	40 meters
Power Requirements	130mA / 3.7V DC (Internal Li-po or AC)
Storage Temperature	-4° – 176° F
Working Humidity	14° – 140° F
Supported Operating Systems	Windows 2000 – Windows 8, Mac OSX, Linux
Video Recording Files	Full Video: 20 minute files Motion Video: 3 minute files
Memory	MicroSD Card or Internal Storage
SD Card Format	FAT32
Recommended Speed	Class 6 or above
Time Consumed of Storage	1GB/20 minutes
Charging Time	Approx. 6-8 hours

INCLUDED WITH THE PRODUCT

Please let your dealer know within 48 hours if any of these components are missing.

- Remote Control Unit
- USB Cable (**not included with BB2Outlet**)
- AC Adapter Wall Charger: (**included only with units that have internal rechargeable batteries**)

WARRANTY WARNING

Any dismantling of the product to access the inside of the device will void the warranty.

If you need technical support or have additional questions, please call our support at 770-694-6926