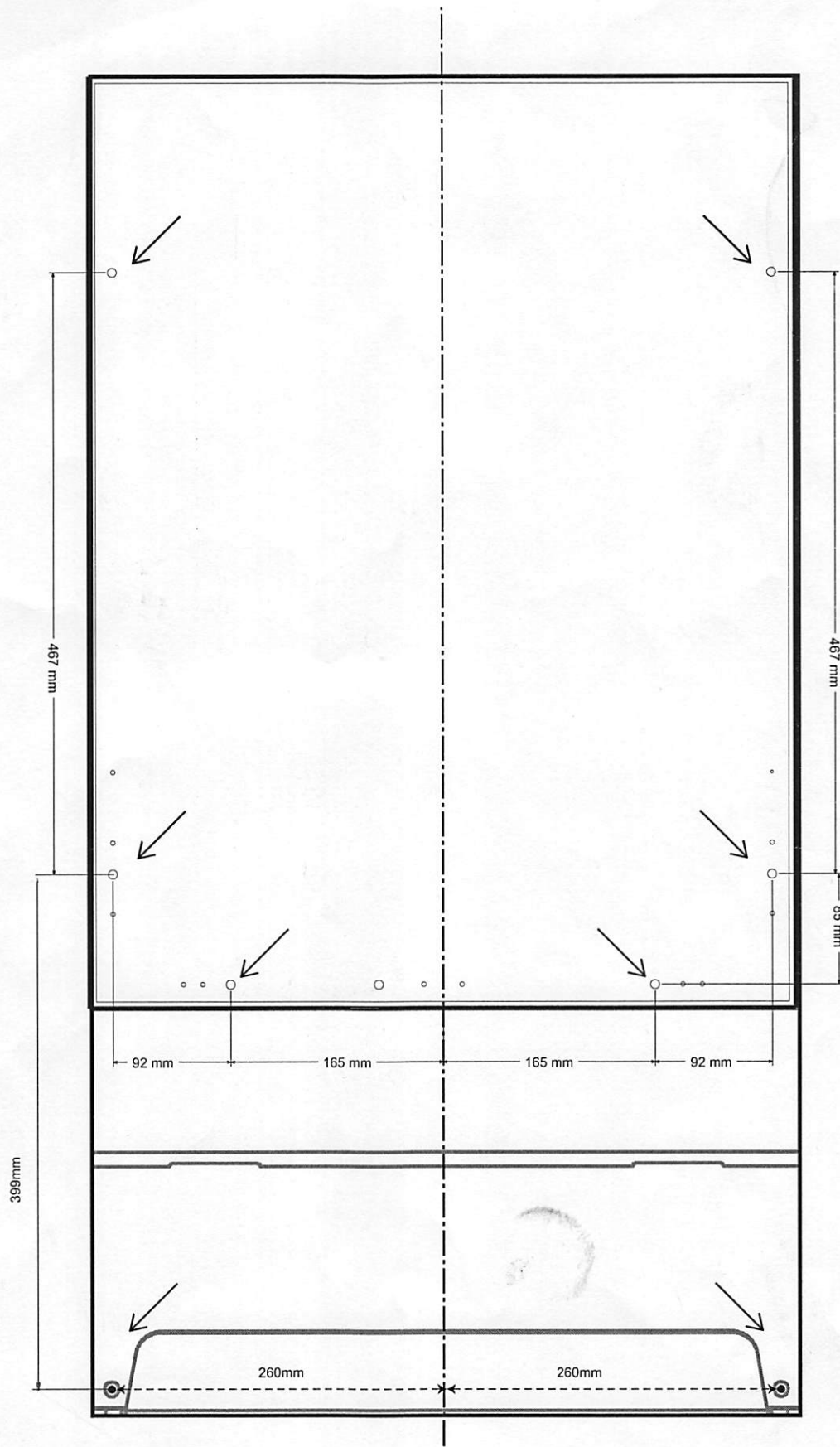


# Wall Mount Backlit Charging Station

Installation Supplementary Guide 1



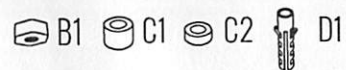
Screw hole size  $\text{Ø}7\text{mm}$

# Wall Mount Backlit Charging Station

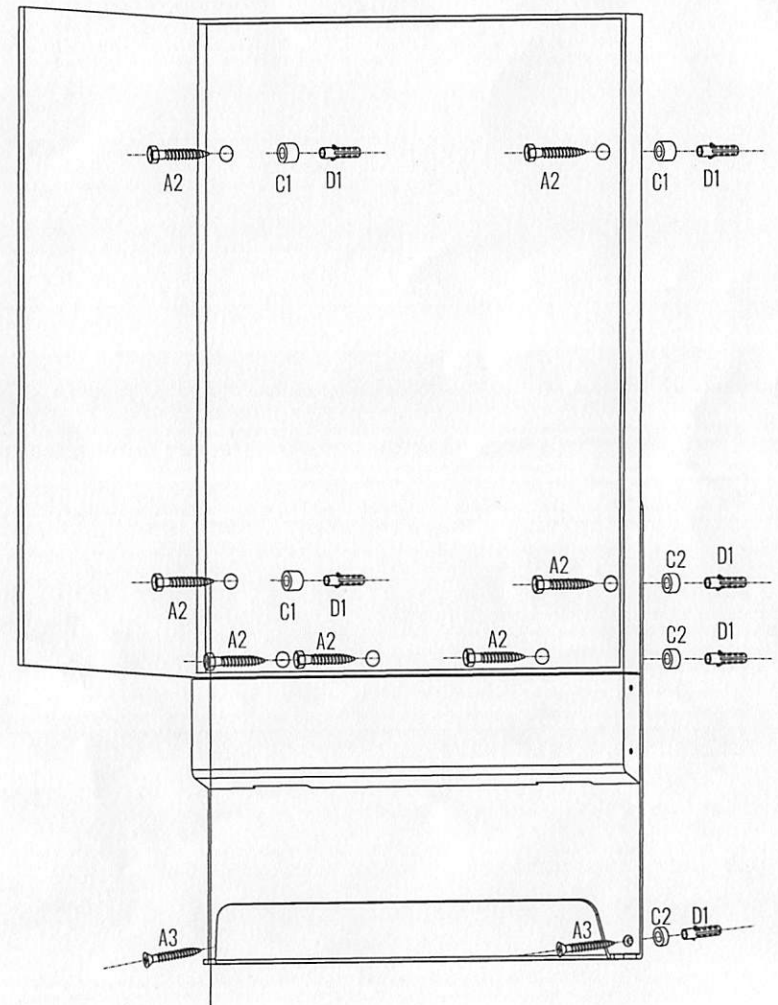
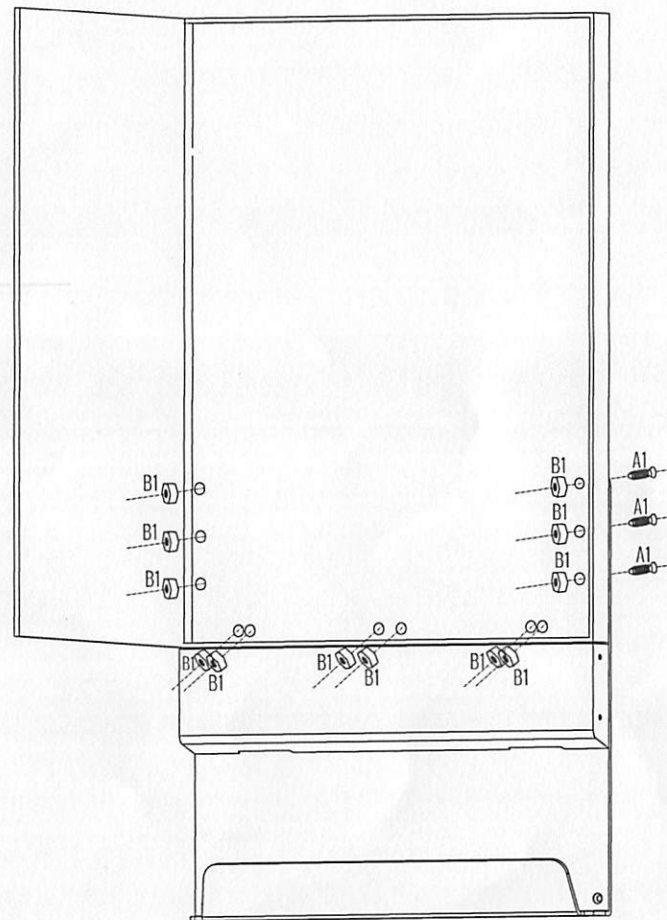
## Installation Supplementary Guide 2

### Step 1: Connect light box to the panel.

### Step 2: Fix Charging Station on the wall.

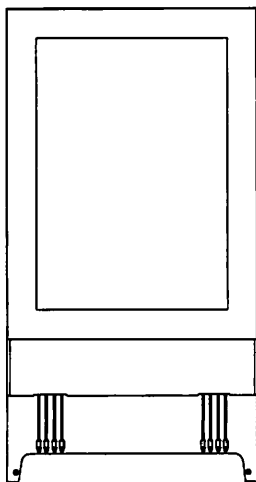


- A1: M3 x 14mm
- A2: M6 x 40mm
- A3: M5 x 40mm
- B1: 6x 6 x 2mm
- C1:  $\varnothing 15 \times 10$ mm
- C2:  $\varnothing 15 \times 5$ mm
- D1:  $\varnothing 8 \times 37$ mm



# Wall Mount Backlit Charging Station

## User Manual



### A Description and Function:

The Wall Mount Backlit Charging Station is made for charging up to 8 mobile devices simultaneously. Features an A2 Backlit lightbox for advertising purposes.

### B Intended Use:



It is not allowed to use the device in other ways than described in chapter "Description and Function" Use this device only in dry interior rooms. The symbol with the house reminds you of that. If you do not attend to these regulations and notes on safety, it might cause fatal accidents, injuries and damages to persons and property.

### C Notes on Safety:



**ATTENTION!** Only skilled electricians may assemble and disassemble the housing of the product. There is a risk of electric shock and short circuit!

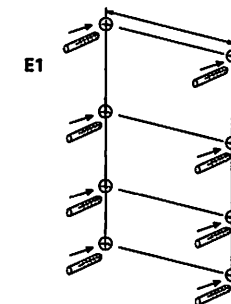
This product is not a toy and is not meant for children, because it contains small parts which can be swallowed and can injure when used inappropriately!

- Please install the system and devices attached to it in a way that persons cannot be injured, or objects not be damaged for example by dropping and stumbling.
- Please remove the packing materials, because children may cut themselves on them while playing. Furthermore, there is a risk of swallowing and inhalation of incidentals and insulating material.
- Avoid places with high temperatures, or humidity, or places which might come into contact with water.
- Do not install the product close to openings of air conditioners, or at places with an excessive amount of dust, smoke or vibrations.
- Place the product only on horizontal and flat surfaces to avoid falling.
- Do not modify and alter the product and any accessories! Make sure you also read the Chapter "Warranty and Liability".
- Do not use any damaged parts.
- Plug and unplug all cables / adaptors slowly and carefully.
- During transport, observe the details listed in the Chapter "Specifications", and implement measures suitable for transport, e.g. use the original package.
- For questions, defects, mechanical damages, malfunctions, and other functional problems which cannot be resolved by this manual, please contact your dealer for repair or replacement, as described in the Chapter "Warranty and Liability".
- Mind Chapter "Specifications".
- Please also observe the terms of use described in the Chapter "Intended Use".

### D Package Content:

- 1 pc Charging Station
- 1 pc Manual
- 8 pcs Charging Adaptor plugs for different devices:
  - 2 Apple Lightning Connector for Apple iPhone, iPod
  - 2 Apple 30pins Connector for Apple iPhone, iPod
  - 4 x Micro USB Connector for Mobile Phones
- 1 pc Installation Supplementary Sheet
- 1 set of Screws & Studs
- 1 set of Cable Ties

### E Installation

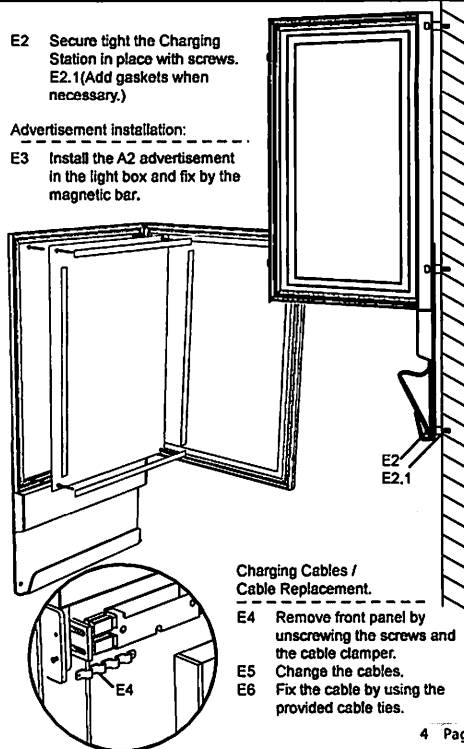


E1. Fix screw studs on wall according to the installation supplementary sheet.

E2 Secure tight the Charging Station in place with screws. E2.1(Add gaskets when necessary.)

Advertisement installation:

E3 Install the A2 advertisement in the light box and fix by the magnetic bar.



Charging Cables / Cable Replacement.

- E4 Remove front panel by unscrewing the screws and the cable clamber.
- E5 Change the cables.
- E6 Fix the cable by using the provided cable ties.

### F Care, Maintenance, Storage and Transport



**ATTENTION!** There is a risk of electric shocks and short circuit!

- The device is maintenance-free.
- Always disconnect the mains plug from mains at first!
- Use a dry linen cloth to clean your product, or use a slightly moist cloth for heavy stains. Look out for live cables of your device during cleaning! Do not use any cleaning supplies and avoid liquid entry to the device.
- Avoid the risk of stumbling during installing the mains Power Cord and adaptor plugs.
- Avoid places with high temperatures, humidity, or places which can become wet, also during care, maintenance, storage and transport.
- Mind the notes on safety also regarding care, maintenance, storage and transport.
- Use the original packaging as protection from dust and humidity for transporting.

### G Troubleshooting:

Problem	Help
The device does not charge	<ul style="list-style-type: none"> <li>When the device is charged completely, no charging is shown.</li> <li>Check all connections for tight fitting.</li> <li>Use only the fitting Charging Adaptor Plugs.</li> </ul>
Other problems	Consult your dealer.

### H Specifications:


Model	Wall Mount Backlit Charging Station
Input Voltage	100-240V AC / 50-60 Hz
AC Adaptor Output	18V/4A
Output Voltage (Charging Adaptors)	5V
Output Current	8 x 1.5A
Output top side of housing	4 x Changeable Ports
Weight without AC Adaptor	9.5kg
Height	1039mm
Length & Width	550x45mm

### I Warranty and Liability:

- The producer grants a 12 months warranty to a new device.
- As the manufacturer has no influence on installation, warranty of the product only applies to the product.
- If any fault or damage is detected on your device, please contact your dealer and provide your sales slip or invoice as evidence of the purchase, if necessary. Your dealer will repair the fault either on site or send the device to the manufacturer. You make the work of our technicians considerably easier, describing the possible faults in detail. If your dealer cannot be contacted, you can also contact us directly.

- The manufacturer is not liable for damages to persons or property caused by improper installation or operation not described in this guide. This includes, among others, any alteration and modification of the product and its accessories.
- Any use other than described in this user manual is not permitted, and causes loss of warranty, loss of guarantee, and non-liability.
- We reserve our right for misprints and changes of the device, packing or user manual.

### J Note on Waste Disposal:

 In according to the European WEEE directive, electrical and electronic equipment must not be disposed with consumers waste. The consumer is committed by law to deposit electrical and electronic devices to public collecting points or to the dealer at the end of the devices lifetime for free. Particulars are regulated in national right. The symbol on the product, in the manual or at the packaging alludes to these terms. With this kind of application of used devices you achieve an important share to environmental protection.

**ATTENTION!**  
Please read the user manual completely and carefully. It is part of the product and includes important information for proper installation and use. Keep this guide to have it available, when there are uncertainties, or the product will be passed on.