



# Video Content Management Guide

## Remote Control Button Legend

1

Trackpad Controls:

- 1 finger on trackpad to move the mouse cursor
- 2 fingers on trackpad to scroll up/down, side to side
- 1 finger tap on trackpad to click
- 2 finger tap on trackpad to go back a page



**\*Important Functions**

## Tablet Navbar Legend



## How To Set Up Your Digital Signage Charging Station Or 8 Bay Video Charging Locker

2

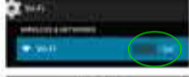
1. After your station has been mounted to the wall or stand, plug it into a wall to boot up the tablet. (\*\*Tablet is not touch screen.)



2. Connect to WiFi by navigating to the apps folder on the home screen using the trackpad on your included remote.



3. Select the settings app in the apps folder.



4. Make sure the WiFi setting is on.



5. Select your WiFi network from the list on the right side of the screen.



5. Enter your network's login credentials.



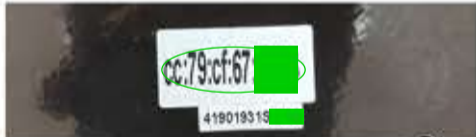
6. Hit the 'Enter' button on your remote or click connect. You should now be connected to WiFi!



## Uploading Your Media Content

3

1. Navigate to: <http://www.4u-mobi.com/advertiser/sys/index.php> on a desktop or laptop (\*\*The webpage will not work on Google Chrome).
2. Locate your login information on the shipping box or the back of your unit.

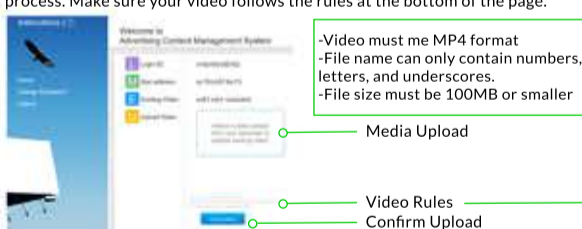


3. The top number sequence will be both your login ID and password (do not use colons when logging in.).



4. Once logged in, you will be asked to create a new password. Save it in a document or write it down so that you don't forget it.

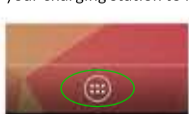
5. Click the labeled space or drag your video to the browser to begin the upload process. Make sure your video follows the rules at the bottom of the page.



## Making Sure Your Video Is Working

4

1. Once you have finished uploading your content on your PC/Laptop, go back your charging station to finish your update.



2. If you are currently in another app or the default video is currently playing, navigate to homes screen.



3. Navigate back to your apps folder using the icon on the home screen.

4. Locate the Video Player app in the apps folder and click on it.

5. Powering down or unplugging the unit will also work. Once the system reboots, the video will auto play after a few seconds.

6. After a brief update, your video content will start playing on a continuous loop unless the app is exited.

**Your Media Has Now Been Uploaded!**

For any further questions, please email [customerservice@chargetech.com](mailto:customerservice@chargetech.com)

