



DW Blackjack® Cube™ Windows Embedded Standard 7 Recovery Instructions

Affected Roles: Administrator, Owner

Complexity: High

Software Version: Windows 7 (DW Blackjack® default settings)

Last Edit: August 30, 2021

System Recovery

Some older DW Blackjack® Cube™ (DW-BJCUBExT) units utilize a Windows Standard 7® operating system through which users can access and manage their DW Spectrum® Servers. In the event of file corruption or other system issues with the unit, it may be recommended to use the USB recovery drive that was provided with the unit.

In addition to resolving system issues, using this method can also be implemented to apply an ISO for the Windows 10 configuration of DW Blackjack systems.

This article will outline how to recover the operating system (OS) of a DW Blackjack Cube with Embedded Windows 7 and update to Windows 10 by using a USB recovery drive.

****NOTE:** DW Blackjack® Cube units using Windows 7 requires a USB recovery drive. Please contact your DW Sales Representative if you have misplaced or lost the provided recovery device.

****NOTE:** Using the recovery program will format/delete all data on the storage drive.

Supported/Affected Devices:

- DW Blackjack Cube (Win7 OS)

How to Run the Windows 7® USB Recovery on a DW Blackjack® Cube™

Please use the guide below to recover a Windows Embedded Standard 7 Blackjack Cube NVR.

Part 1: Assigning the USB Recovery for Boot Device Priority

- 1) Please completely **shut down** the NVR.
- 2) Once the unit has powered OFF, insert the provided **recovery USB** into a vacant USB port.

With the USB inserted, power the NVR back on.

- 3) As the unit is booting, tap the “**Delete**” key on the keyboard to prompt the BIOS.

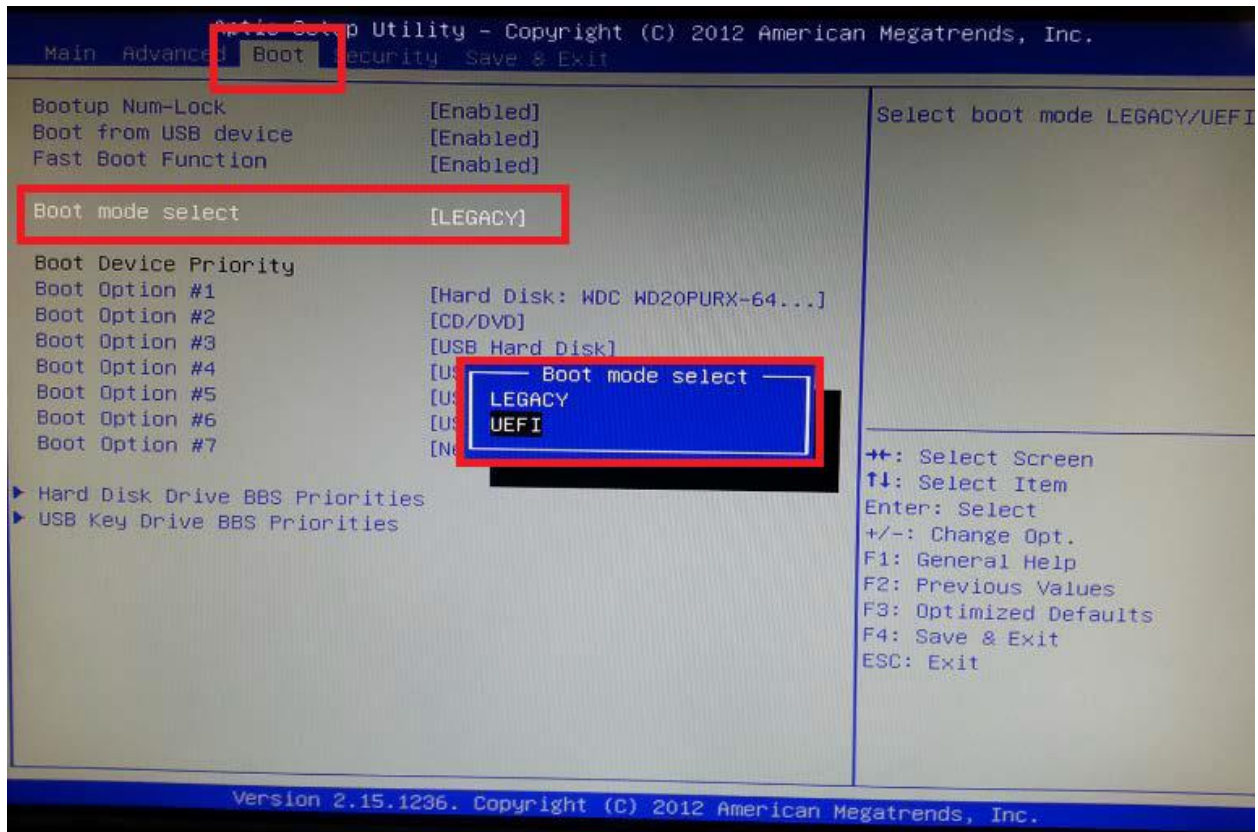
A login prompt will display. Enter the System Administrator password

- *Default Password (Win7):* **admin**



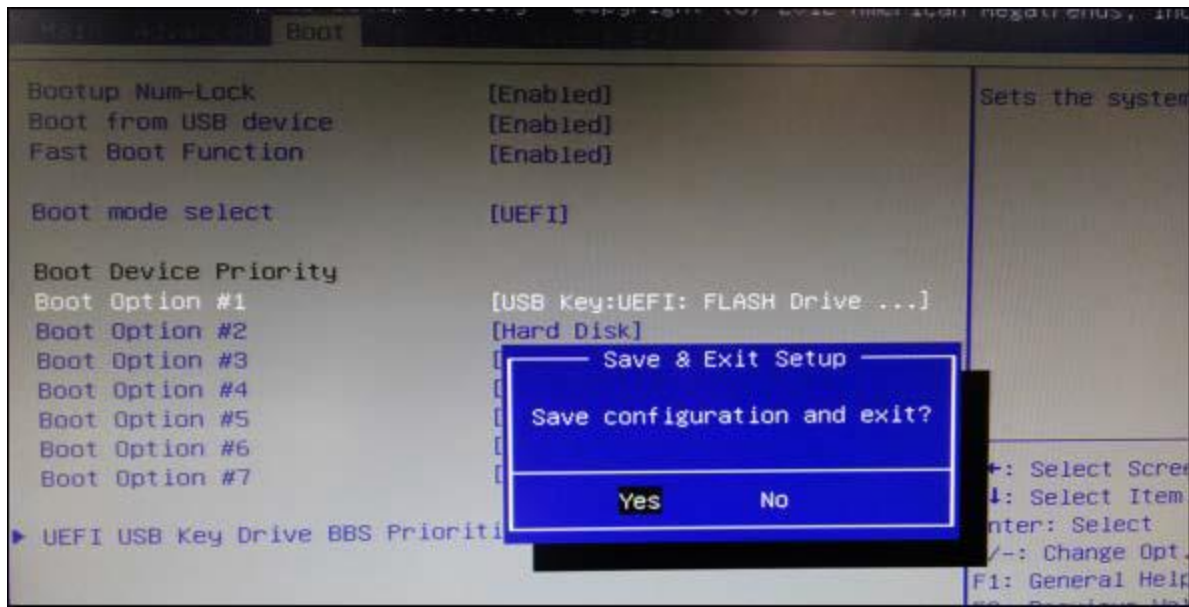
- 4) Once logged into the BIOS, use the **arrow keys** on the keyboard to navigate to the “**Boot**” tab.

Make sure that the “*Boot mode select*” setting is set to “**UEFI**”.



- 5) In the *Boot* menu, locate the *Boot Device Priority* and select “**Boot Option #1**”.

Make sure that *Boot Option #1* is set to use “**USB Key:UEFI: Flash Drive_SM_USB**” as the first boot option. This designates the connected USB recovery drive as the device that the NVR will attempt to start from.



6) Next, press the **F4** key to **Save and Exit** the BIOS setup.

Be sure to **Save** the configuration as you exit.

7) The system will reboot and the following image will display.

Press the “**1**” key on the keyboard to select the “**Acronis True Image**” program.



Part 2: Setting up the Acronis True Image Recovery Wizard

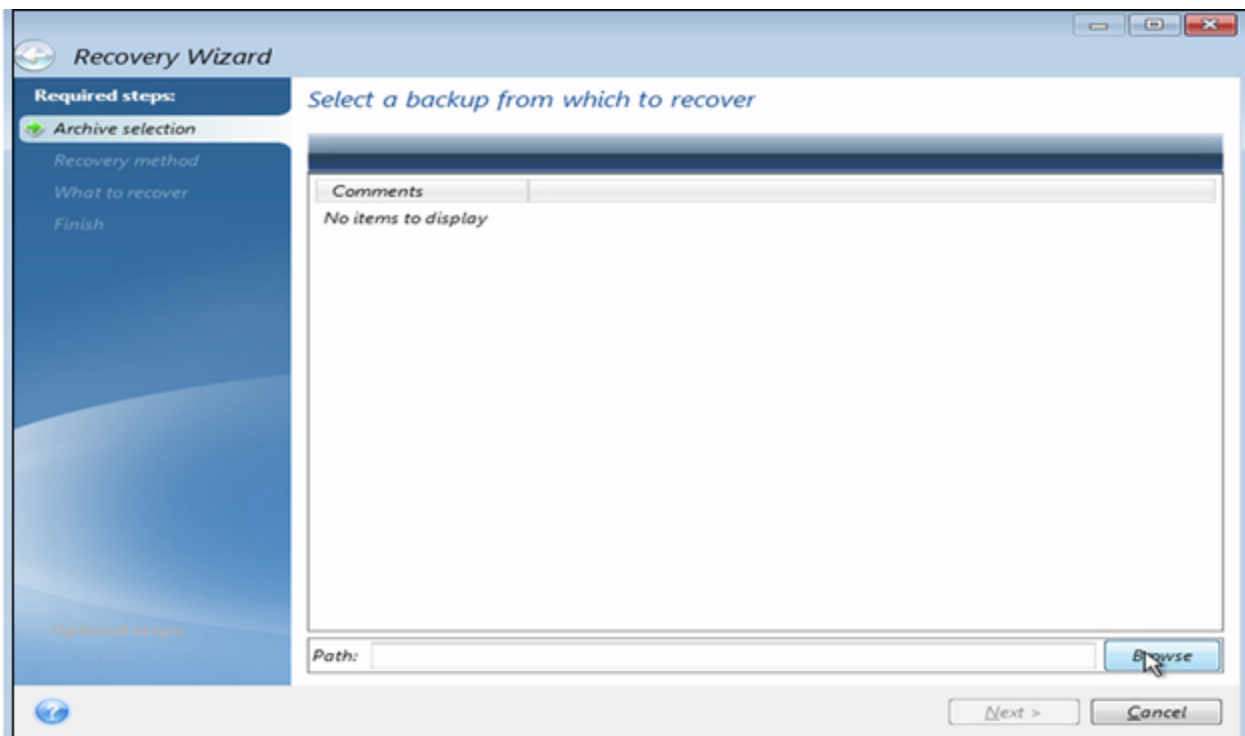
- 1) Following the instructions in the *Part 1* section above, the *Home* menu of the Acronis True Image program will display.

Under the *Recover* section, click on “**My Disks**”.



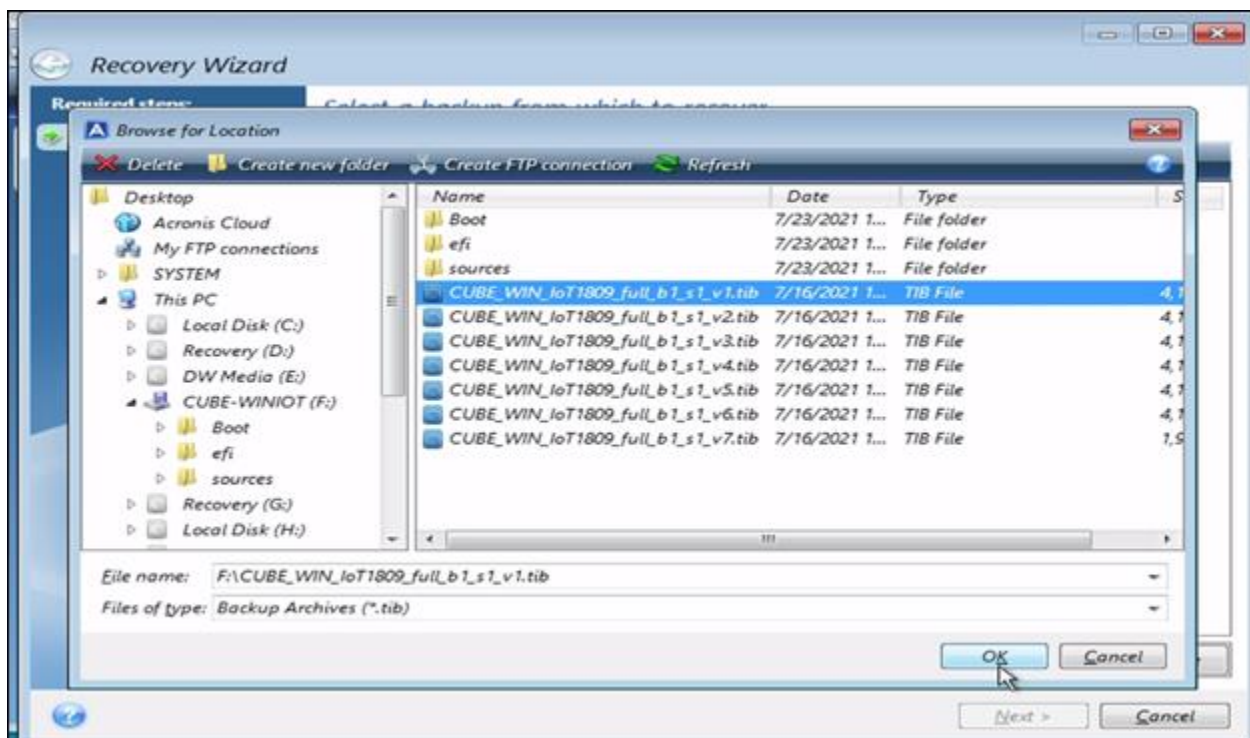
- 2) The program's *Recovery Wizard* will display to begin setting up the recovery parameters.

Click on the “**Browse**” button to select the file path for the *Archive* selection.

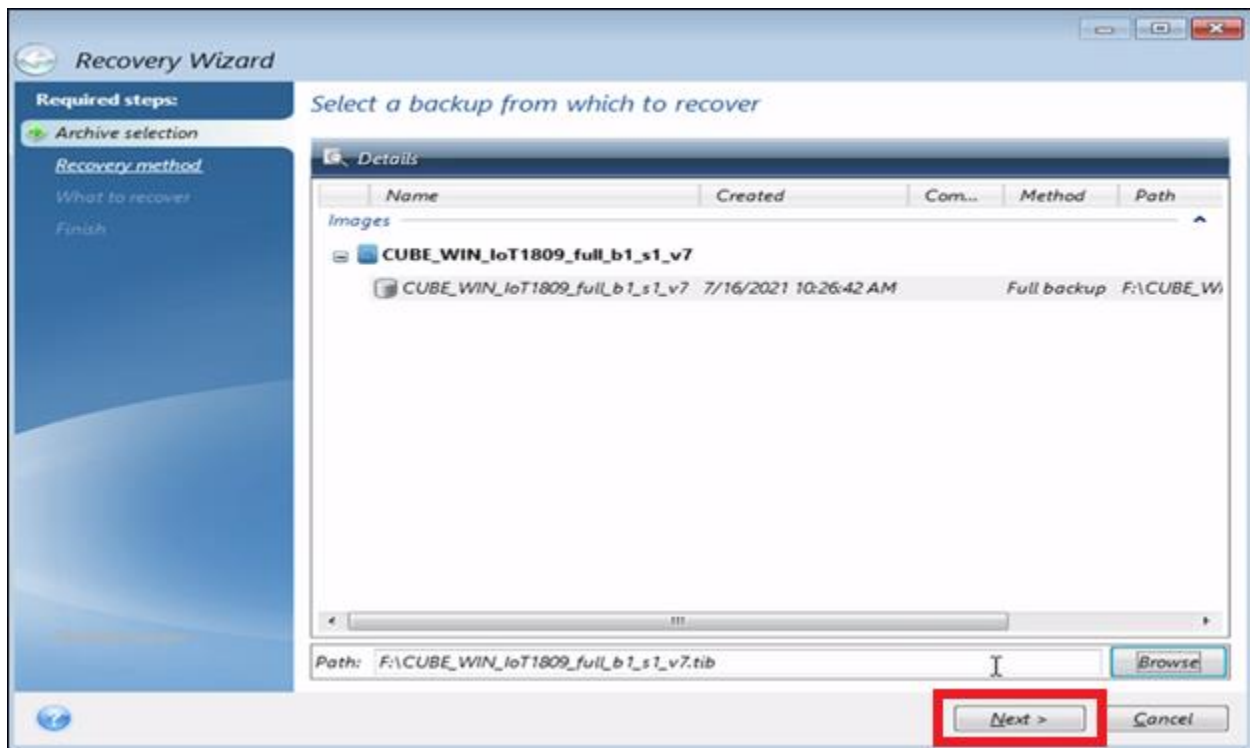


3) The Browse for Location file browser will display.

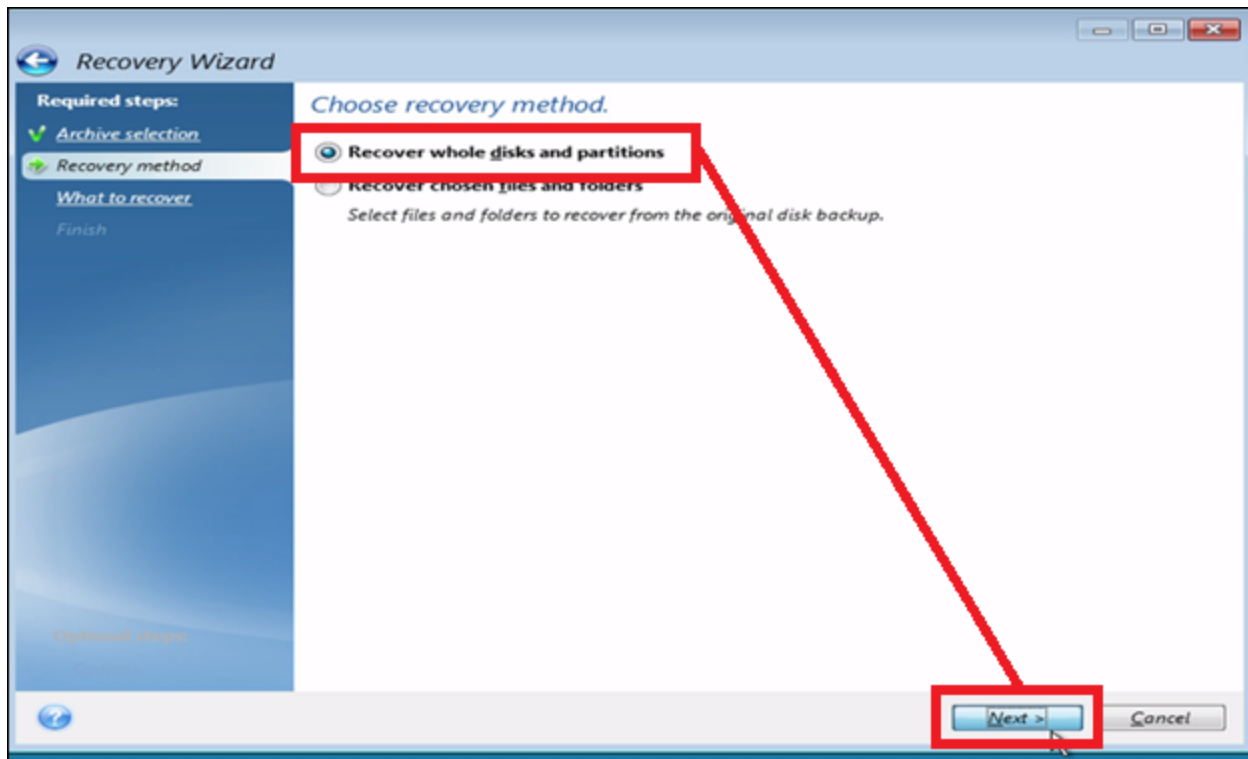
Select the **XXXXX_v1.tib** file, then click the **OK** button.



4) After selecting the **XXXXX_v1.tib** file, click the **"Next"** button to proceed.



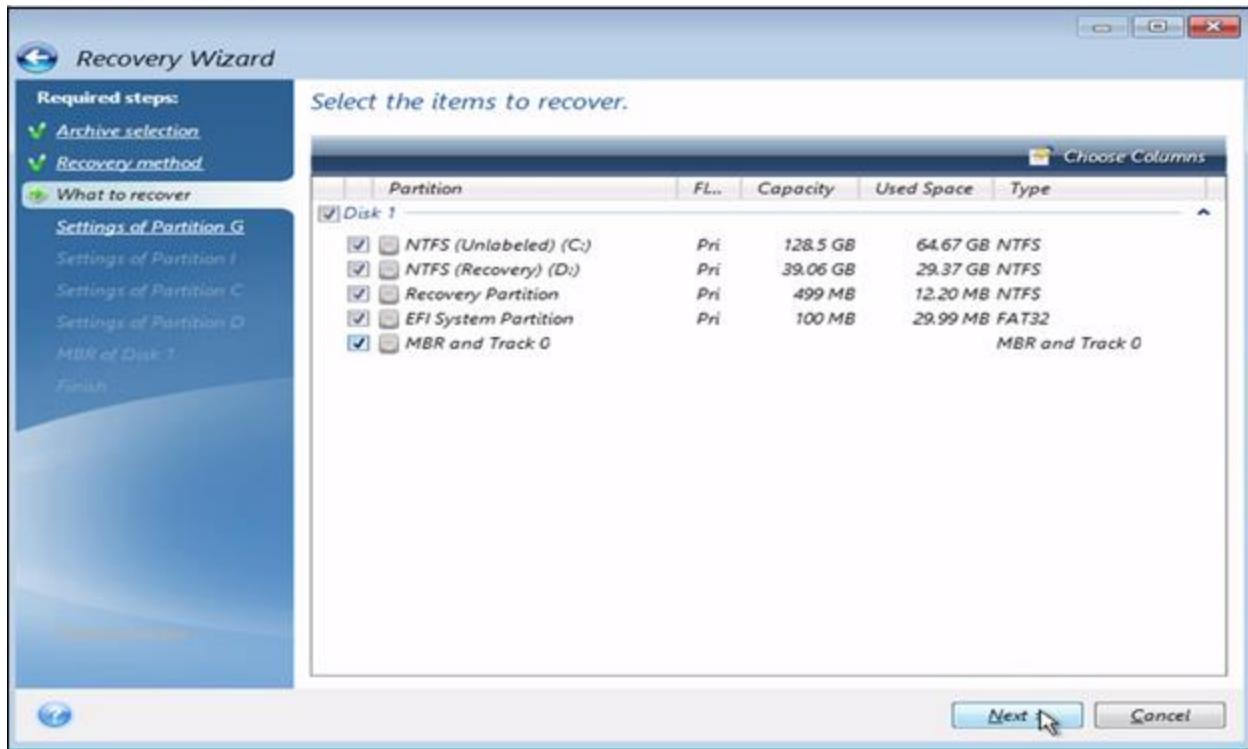
5) Select to **"Recover whole disks and partitions"**, then click the **"Next"** button.



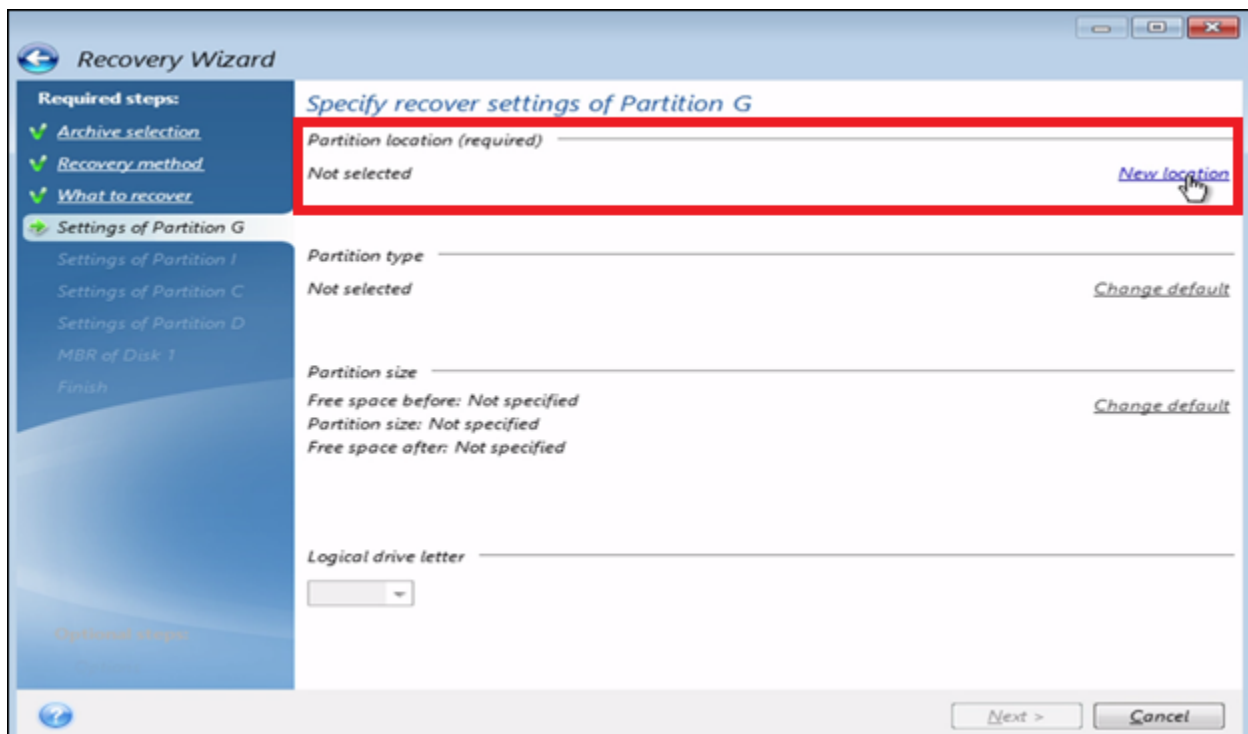
6) The “What to recover” window will display.

Select “**Disk 1**”. This will automatically select all of the partitions on *Disk 1*.

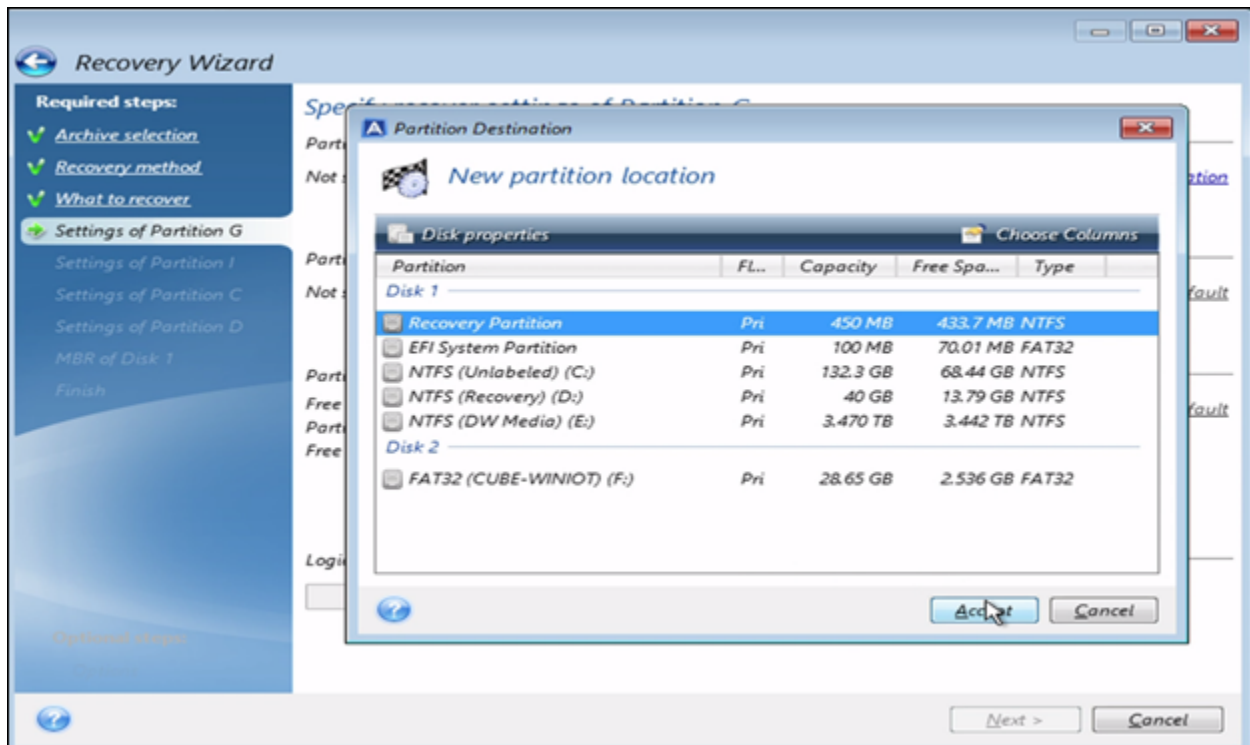
Click the “**Next**” button to proceed.



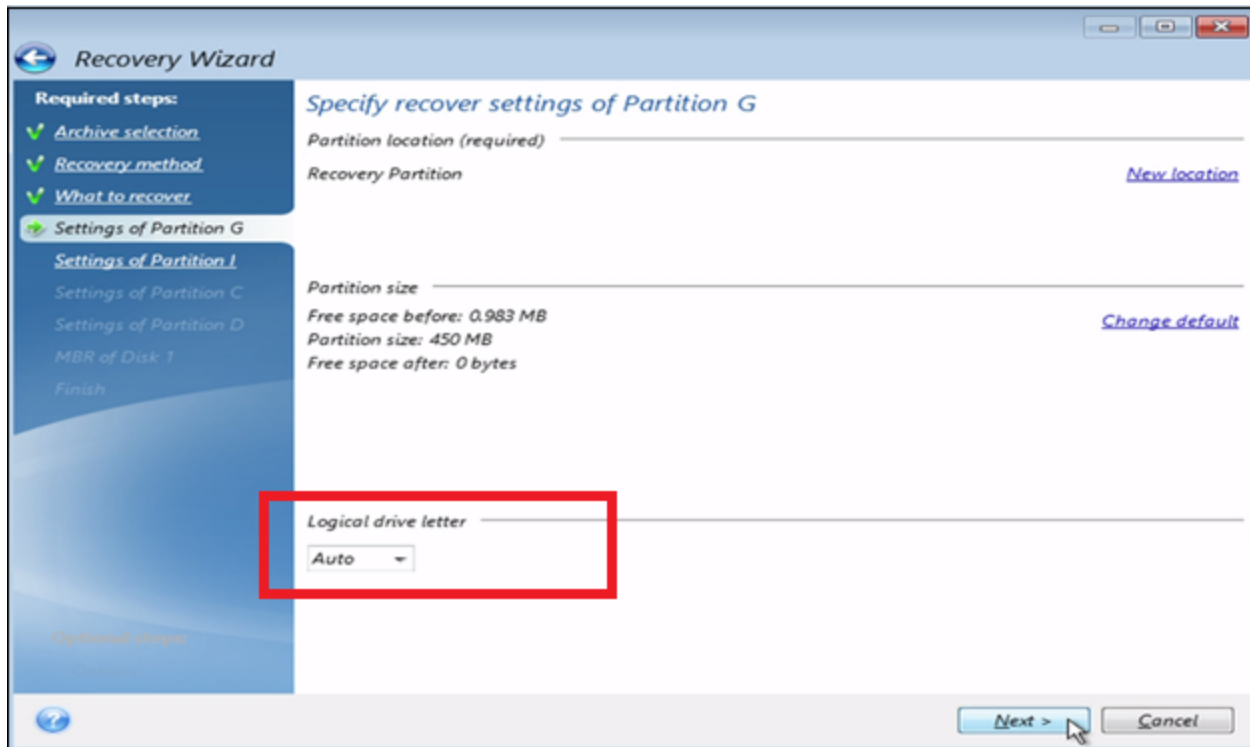
7) In the "Settings of Partition" (partition varies by drive letter) screen, locate the "**Partition location**" section and click on "**New location**".



- 8) For the "Partition Destination", select "**Recovery Partition**", then click the "**Accept**" button.

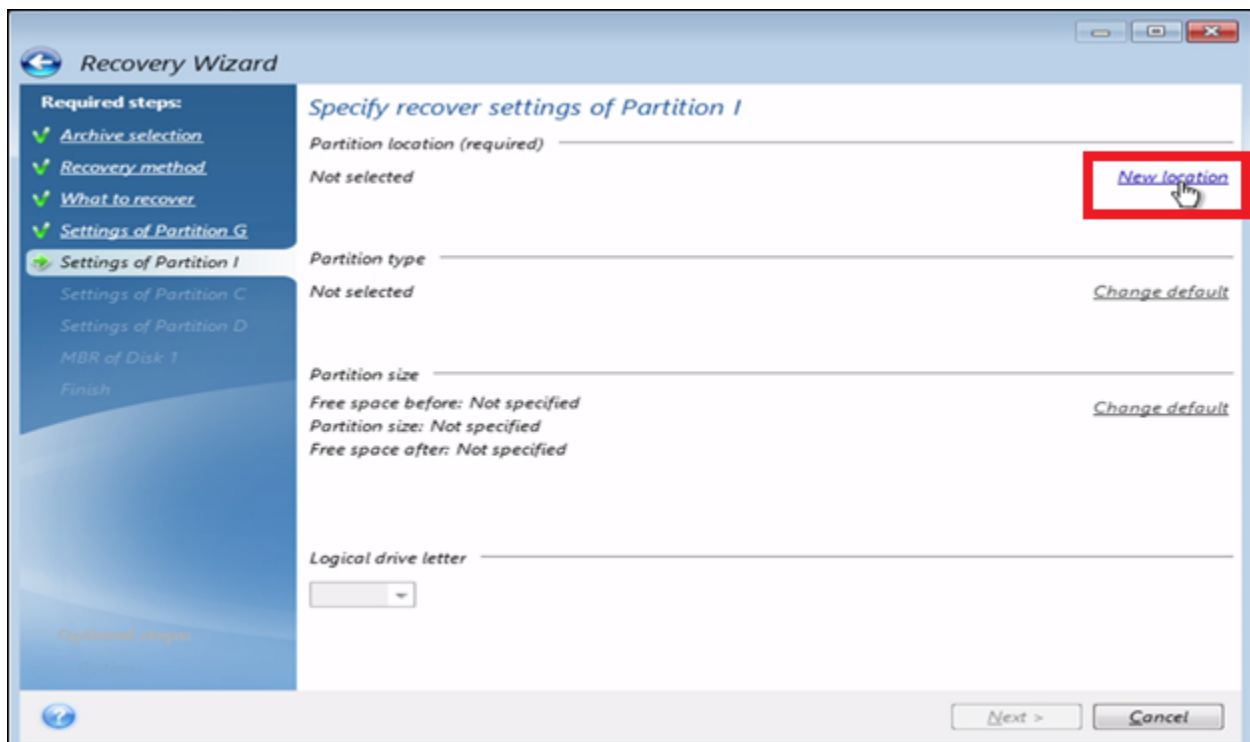


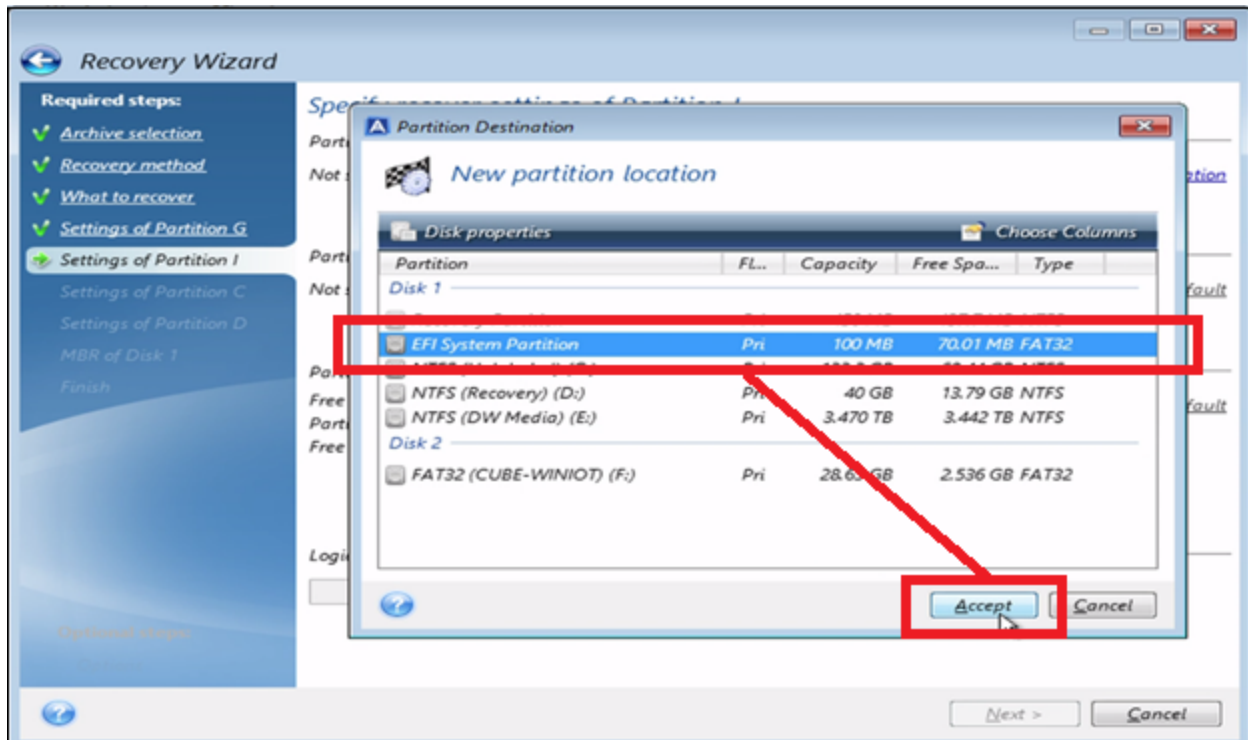
- 9) Next, set the "Logical drive letter" setting to "**Auto**", then click the "**Next**" button.



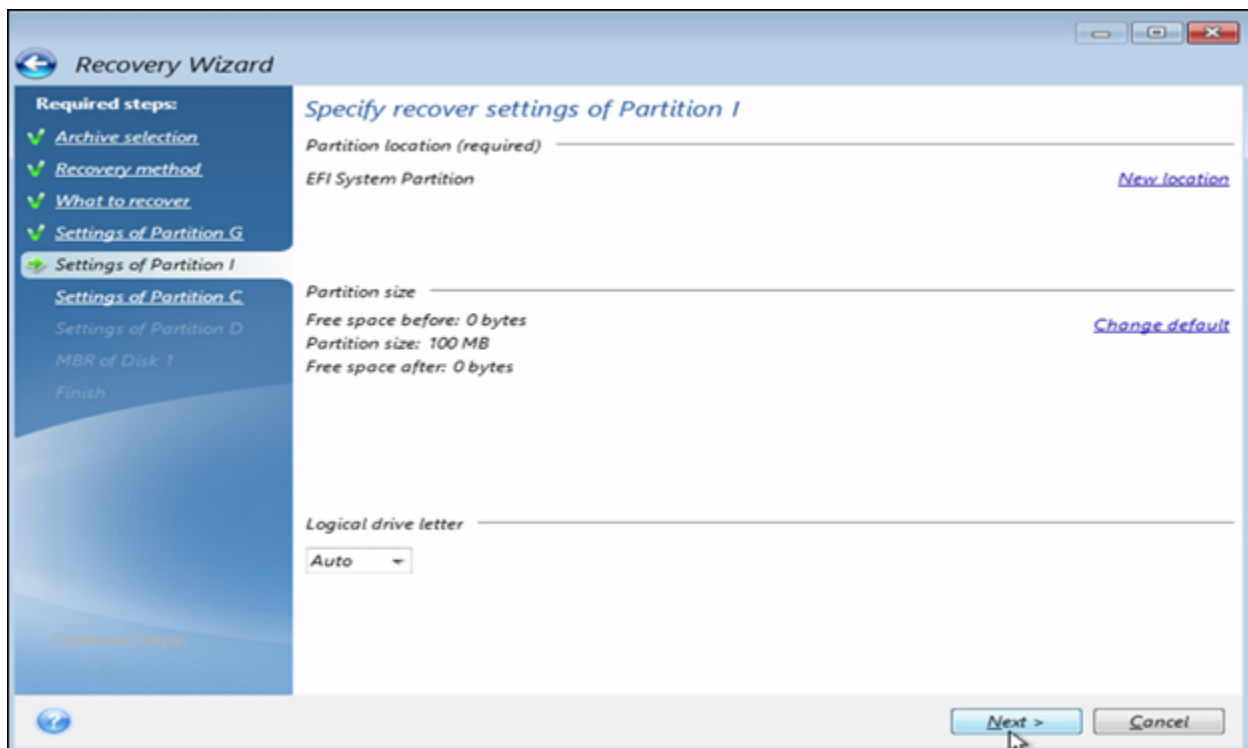
10) For the *EFI System* partition (2nd partition), click on “**New location**”.

Select “**EFI System Partition**”, then click the “**Accept**” button.





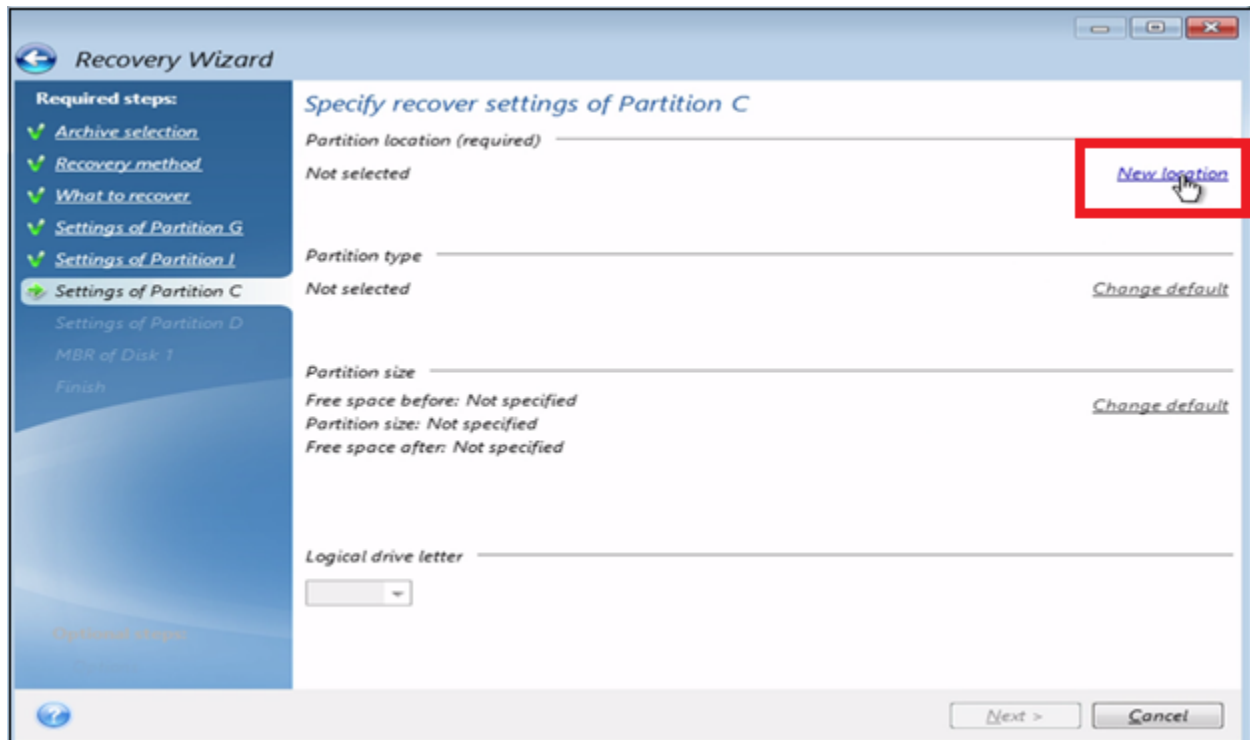
11) Set the "Logical drive letter" setting to "Auto", then click the "Next" button.

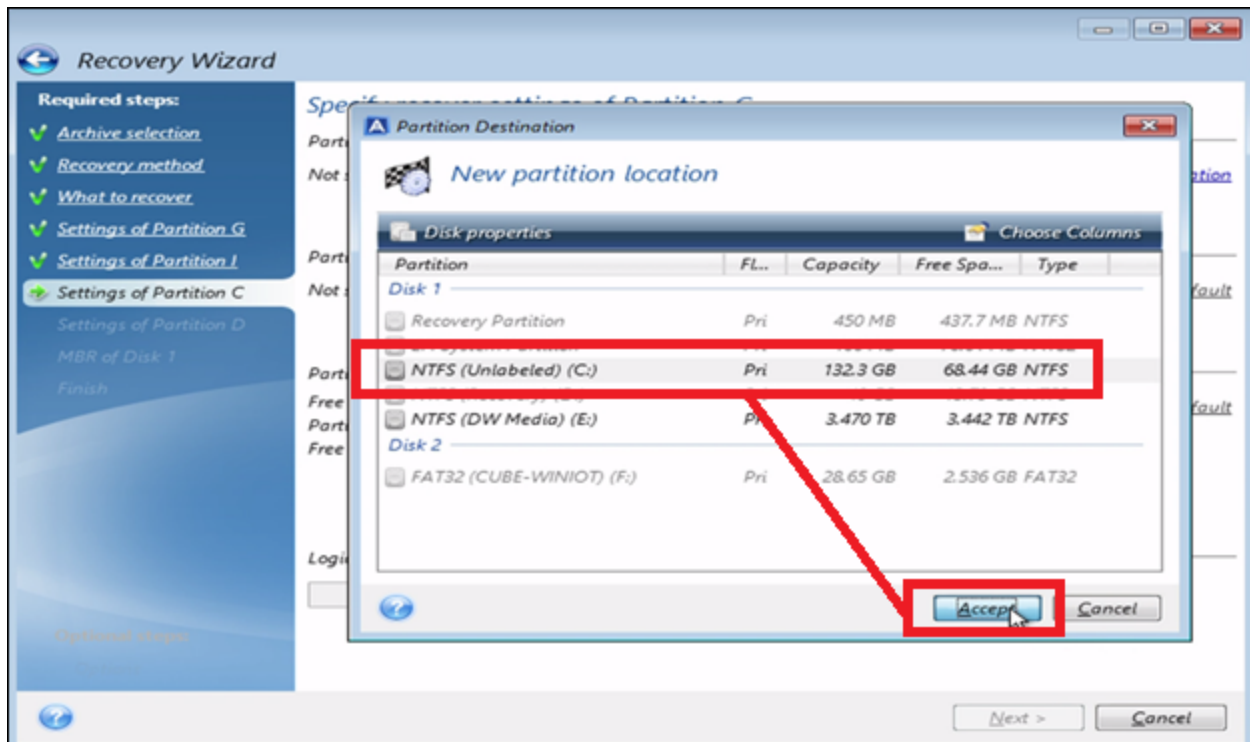


12) For the C: Partition (third partition), click on “**New Location**”.

Select the “**NTFS (C:)**” option, then click the “**Accept**” button.

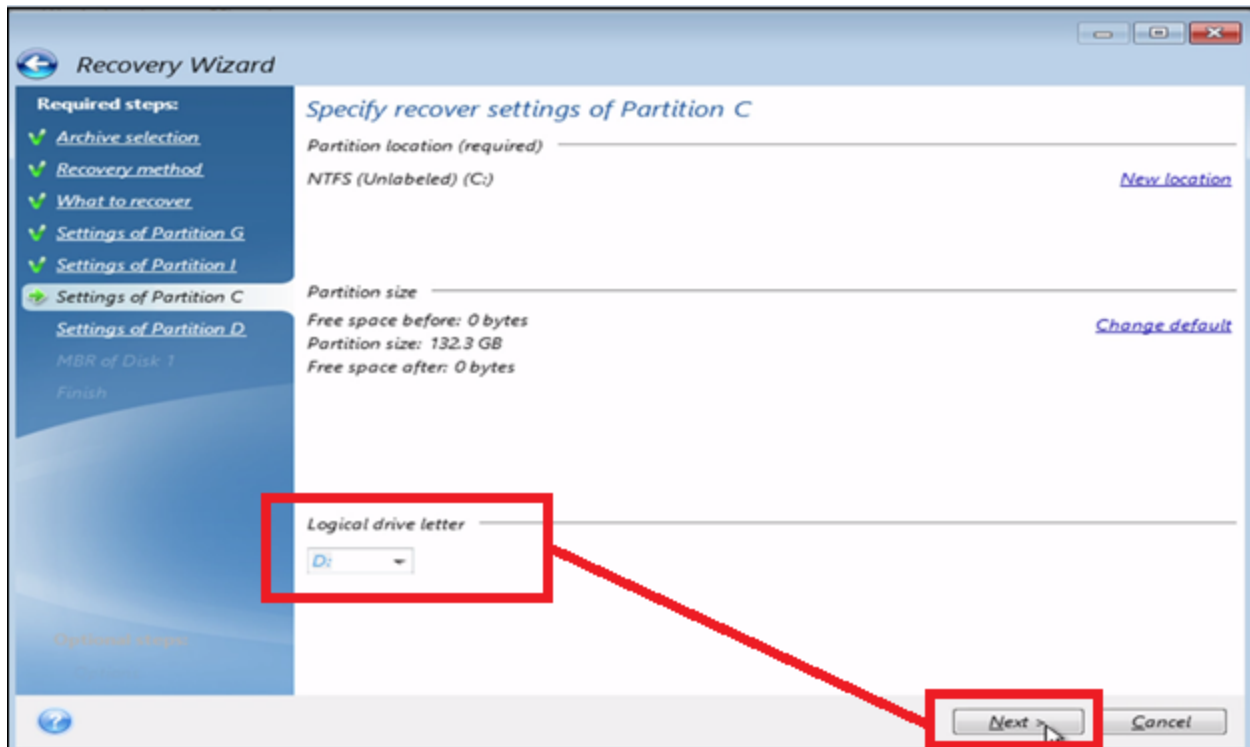
****NOTE:** The *Partition Destination* window here may take a moment to close. Please allow the *Recovery Wizard* complete the setup.





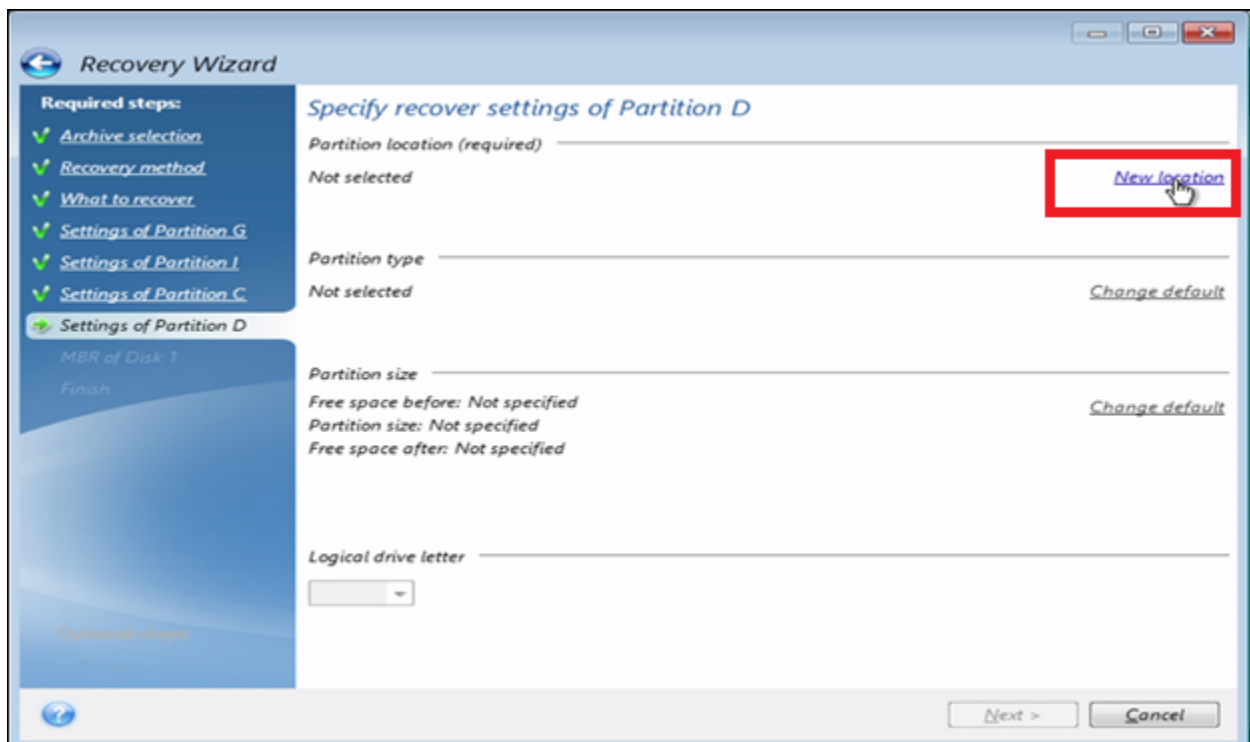
13) Next, set the *Logical drive letter* to the **first available drive letter** in the dropdown.

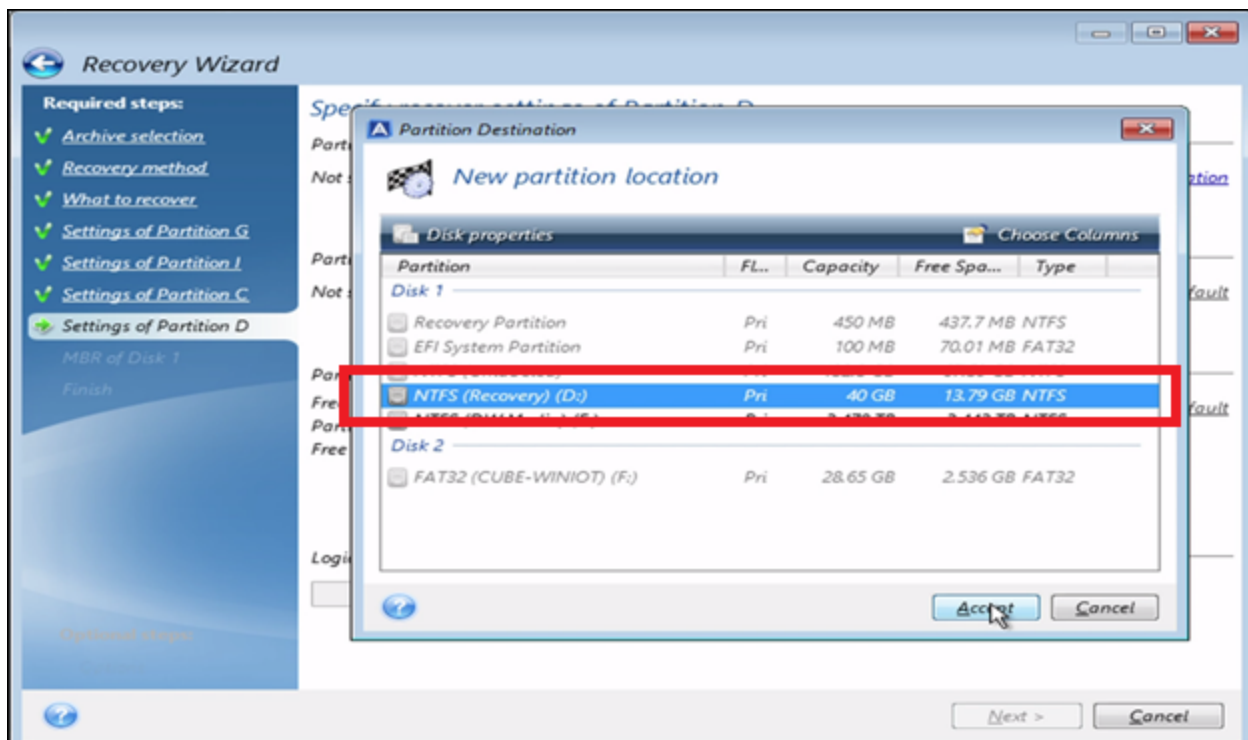
Click "**Next**" button.



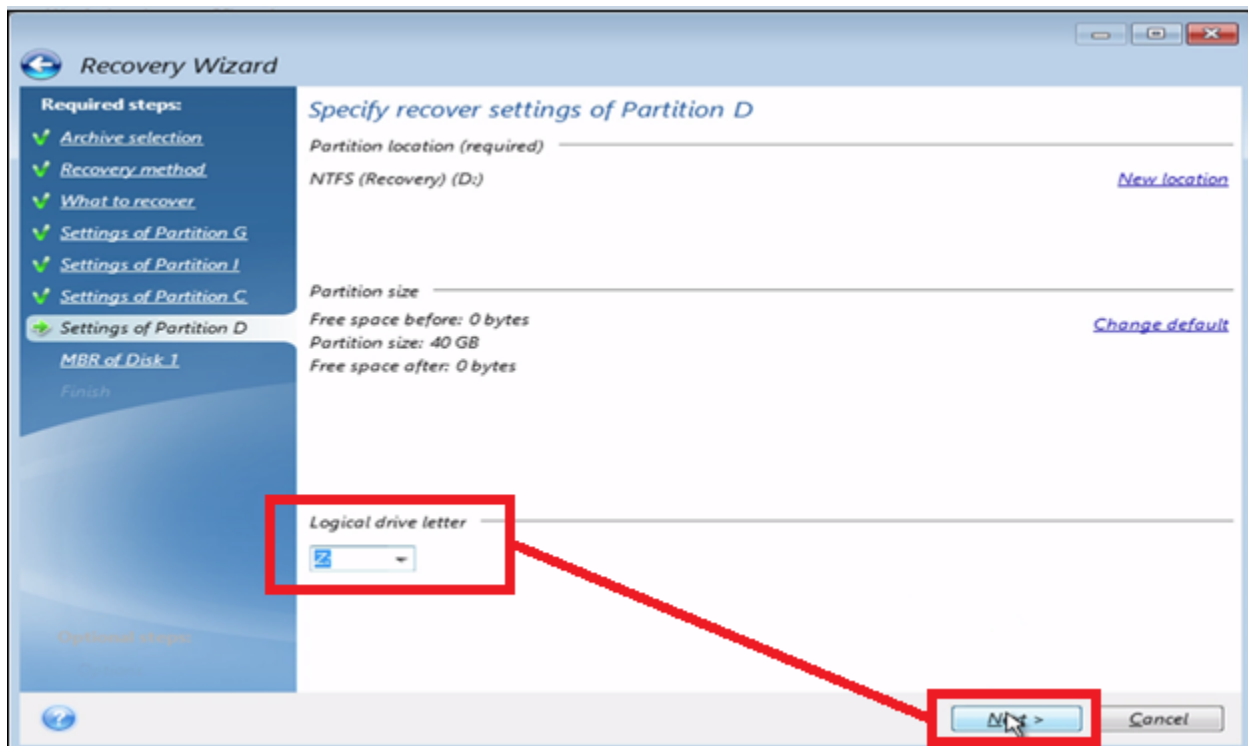
14) For the D: Partition (fourth partition), click on "**New Location**".

Select the "**NTFS (Recovery) (D:)**" option, then click the "**Accept**" button.



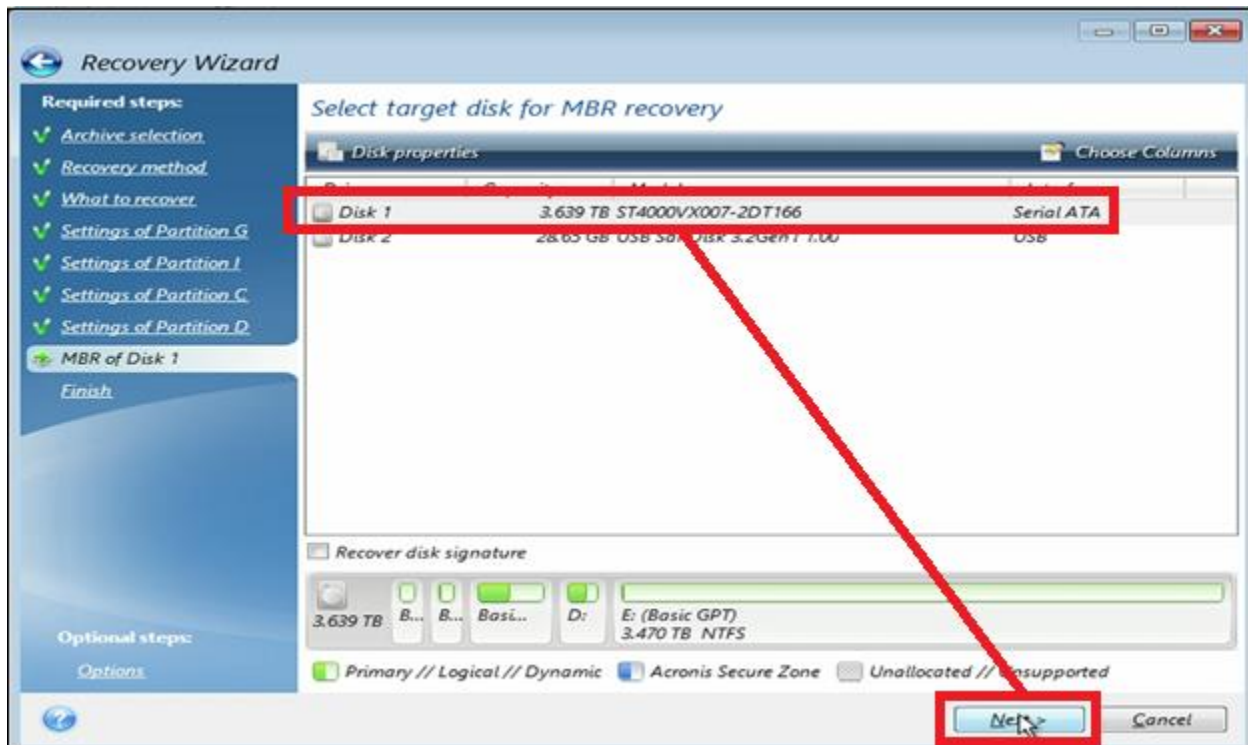


15) Next, set the Logical drive letter to "Z:", then click the "Next" button.



16) When selecting a disk for the master boot record (MBR) recovery, **select the HDD or SSD** that is hosting the (C:) drive partition. Do not select the recovery USB.

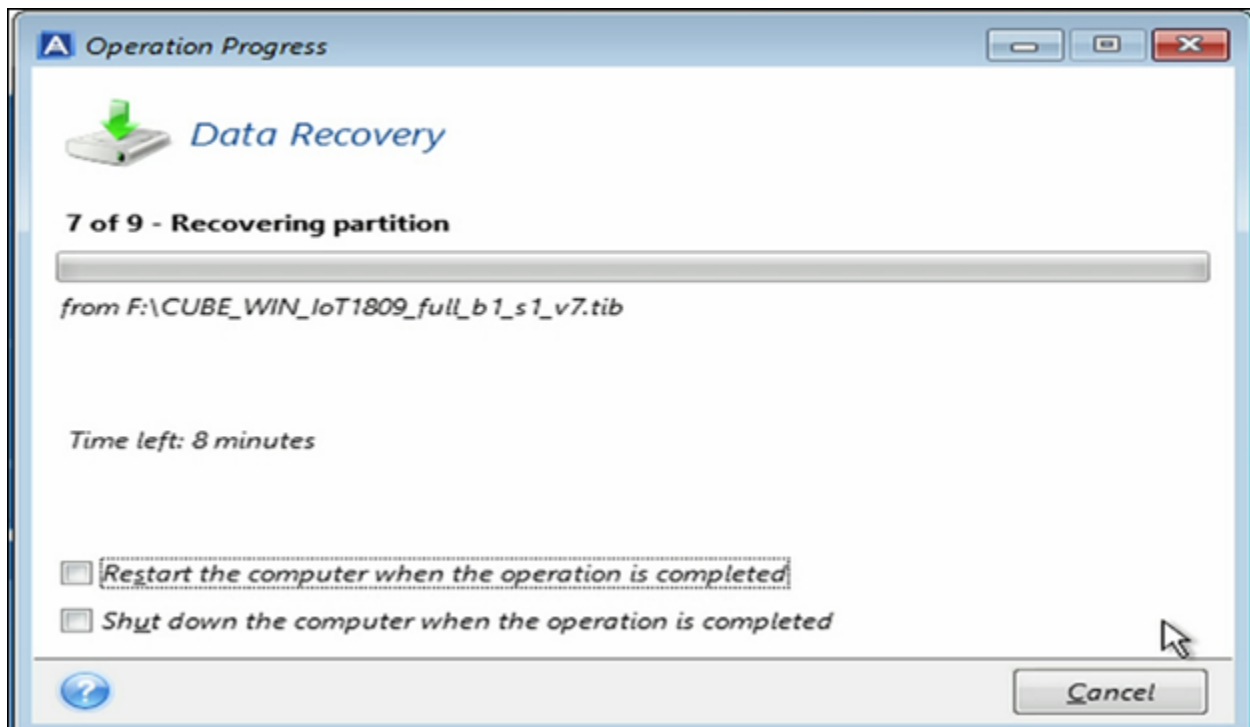
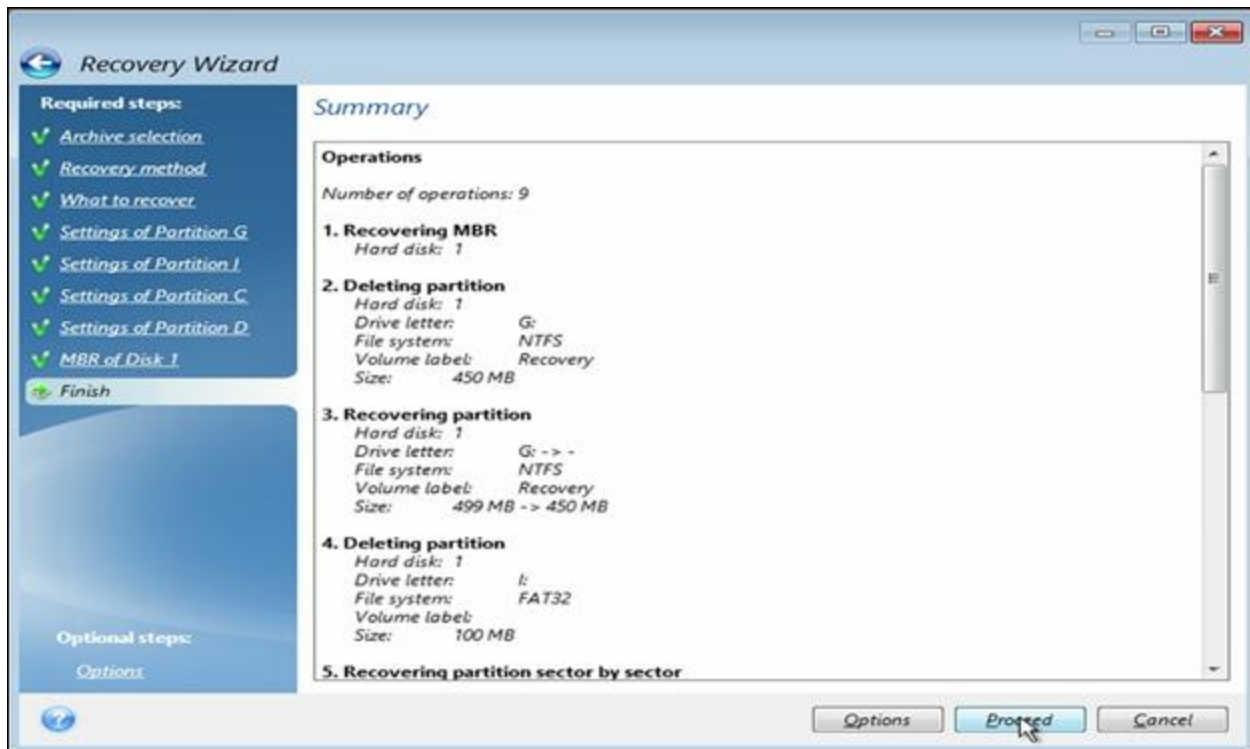
Click the “**Next**” button to continue.



17) A Summary of the Recovery Wizard setup settings will display.

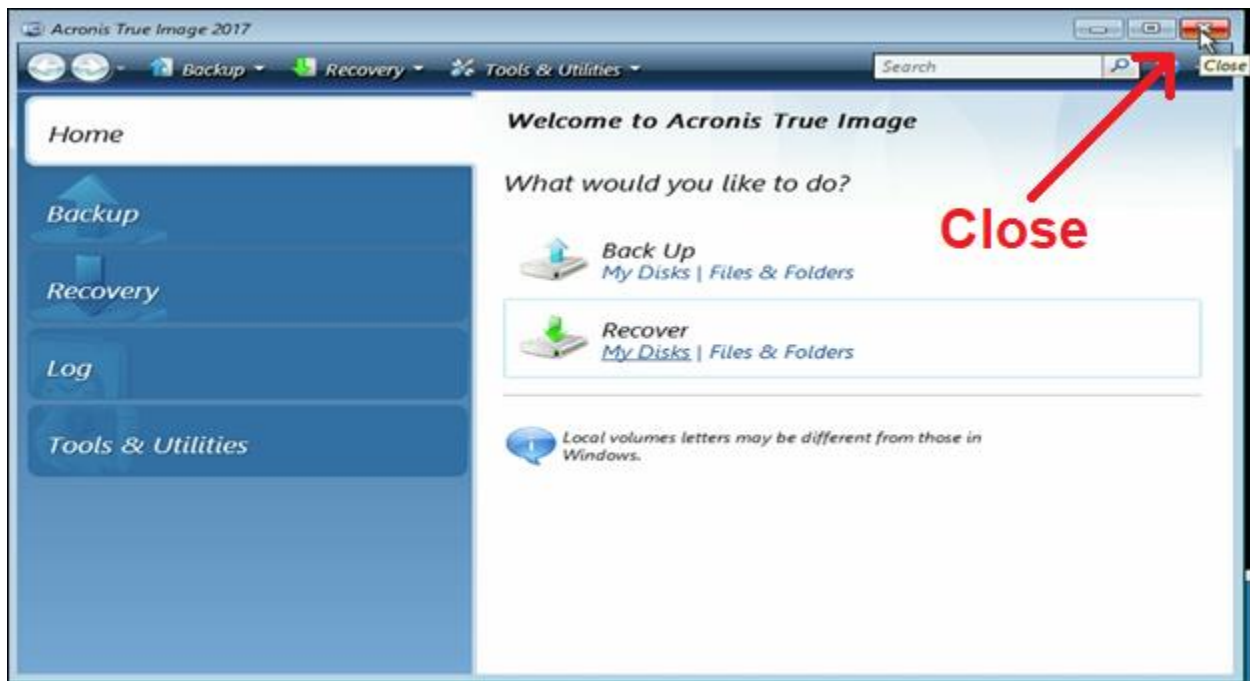
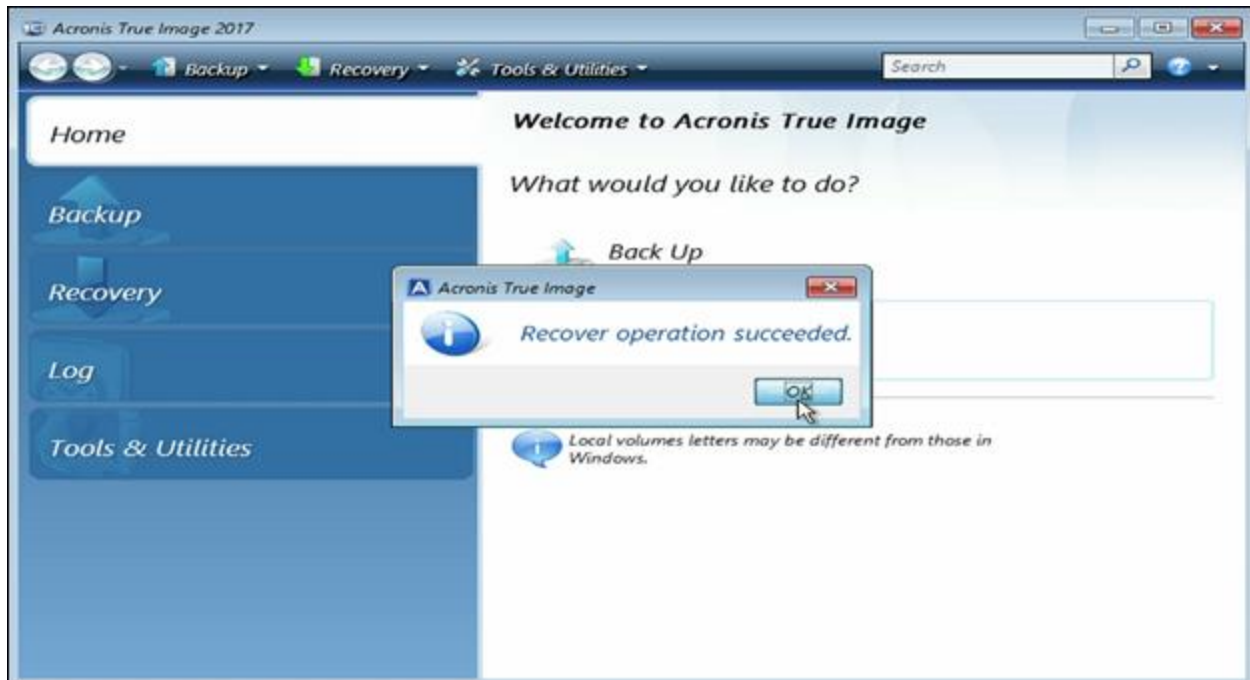
Click the “**Proceed**” button to run the recovery program.

Wait until the recovery completes. You can track the process by using the progress bar.



18) Once the recovery operation has completed, a confirmation message will display.

Click the “**OK**” button to close the popup, then **close the Acronis True Image** tool.



19) **Close** the *Command Prompt* and **reboot the system**.

As the unit is booting, tap the “**Delete**” key on the keyboard to prompt the BIOS.

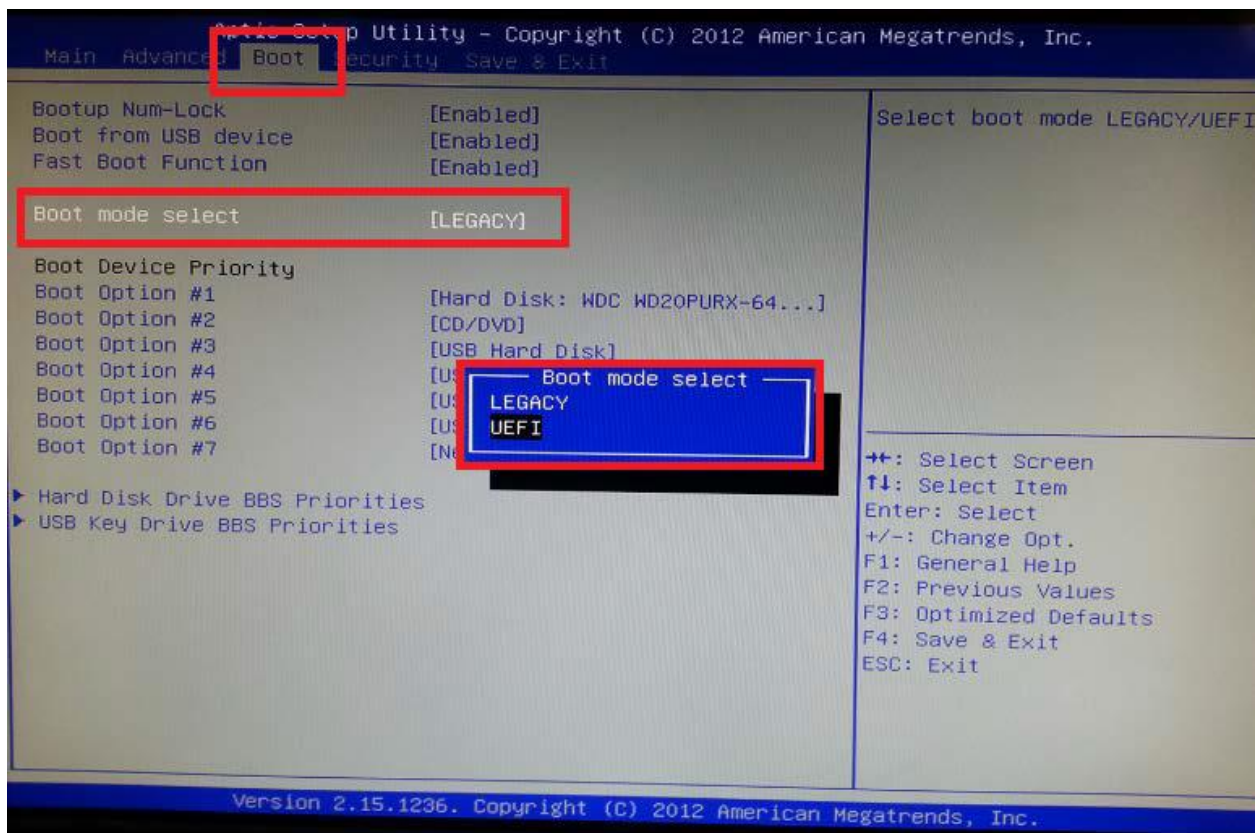
A login prompt will display. Enter the System Administrator password

- Default Password (Win7): **admin**



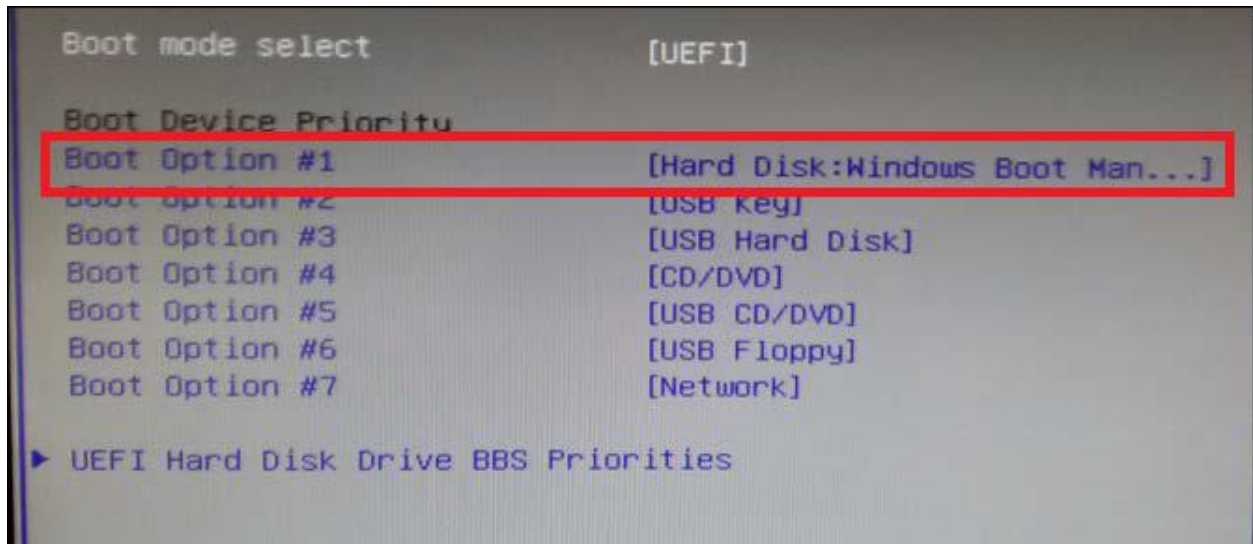
20) Once logged into the BIOS, use the **arrow keys** on the keyboard to navigate to the “**Boot**” tab.

Make sure that the “*Boot mode select*” setting is set to “**UEFI**”.



21) In the *Boot* menu, locate the *Boot Device Priority* and select "**Boot Option #1**".

Make sure that *Boot Option #1* is set to use "**Hard Disk: Windows Boot Manager**" as the first boot option. This designates the storage drive that is hosting the (C:) partition as the device that the NVR will attempt to start from.



22) Next, press the **F4** key to **Save and Exit** the BIOS setup. Be sure to **Save** the configuration as you exit.

Upon startup, boot the system to **Windows 10** and allow the system to load.

Windows Boot Manager

Choose an operating system to start, or press TAB to select a tool:
(Use the arrow keys to highlight your choice, then press ENTER.)

Windows 10

Recovery

To specify an advanced option for this choice, press F8.
Seconds until the highlighted choice will be started automatically: 3

Tools:

Windows Memory Diagnostic



Blackjack[®]

DWUSER

Servers Powered by DW Spectrum[®] IPVMS

Welcome

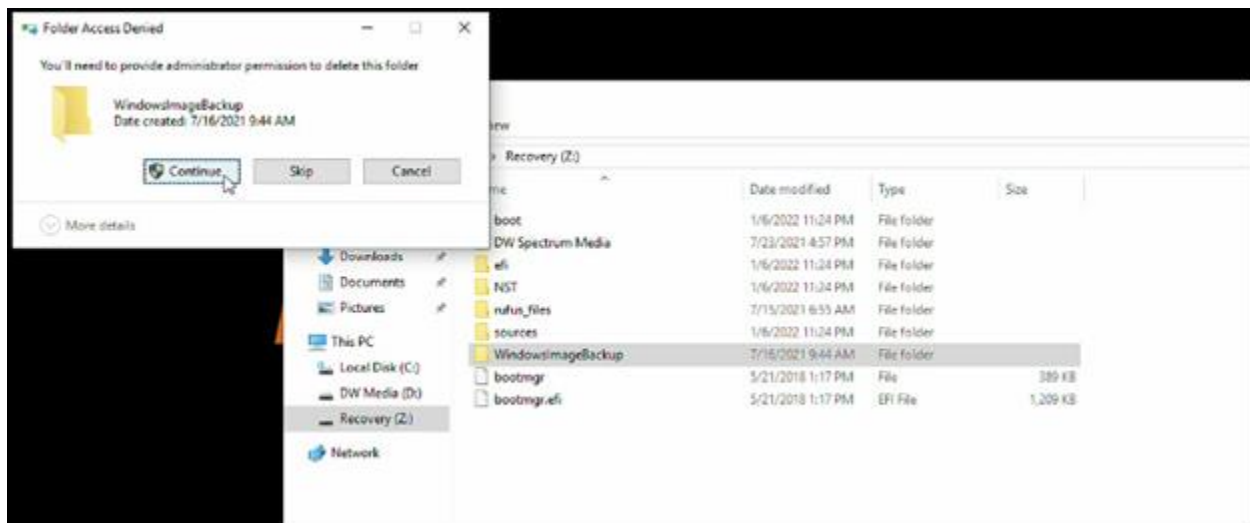
Creating a Recovery Image (Optional)

For further redundancy, a recovery image can be created to use as an embedded recovery file within the DW Blackjack® system. It is recommended to create this image backup as soon as the unit starts after upgrading from Win7 to Win10, while still in a defaulted state.

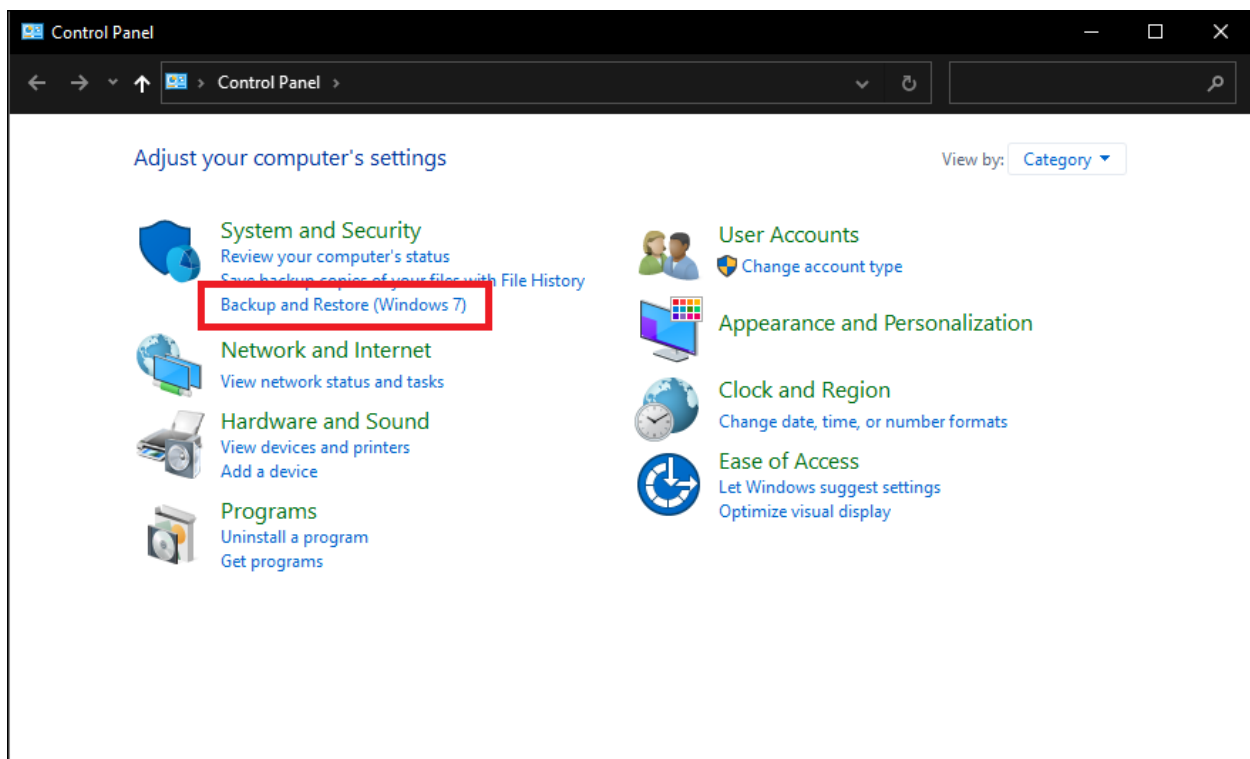
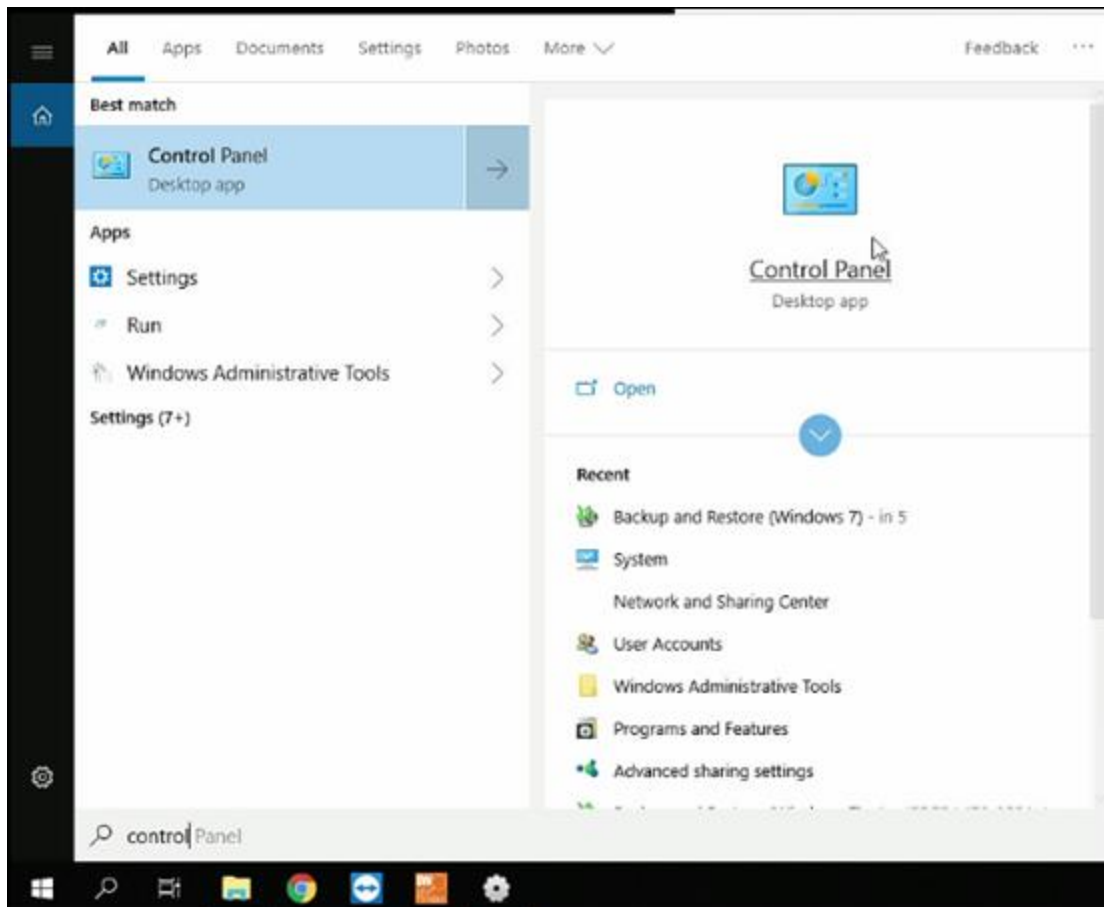
To create a recovery image:

- 1) Open the **Windows Explorer** utility and locate the “**Recovery (Z:)**” drive.

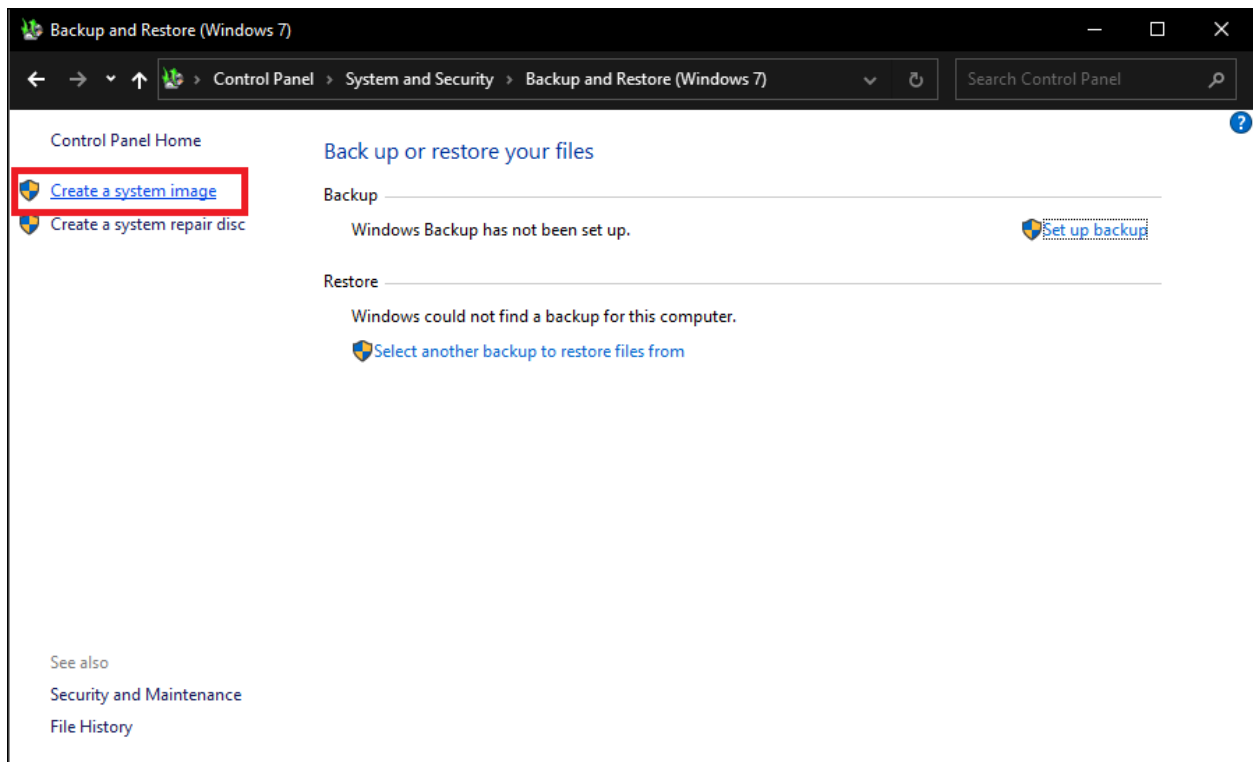
Select the “**WindowsImageBackup**” folder, then **right-click** on the file and select “**Delete**”. Click the “**Continue**” button in the confirmation window to delete the folder.



- 2) Next, open the **Control Panel** application, then click on “**Backup and Restore**”.

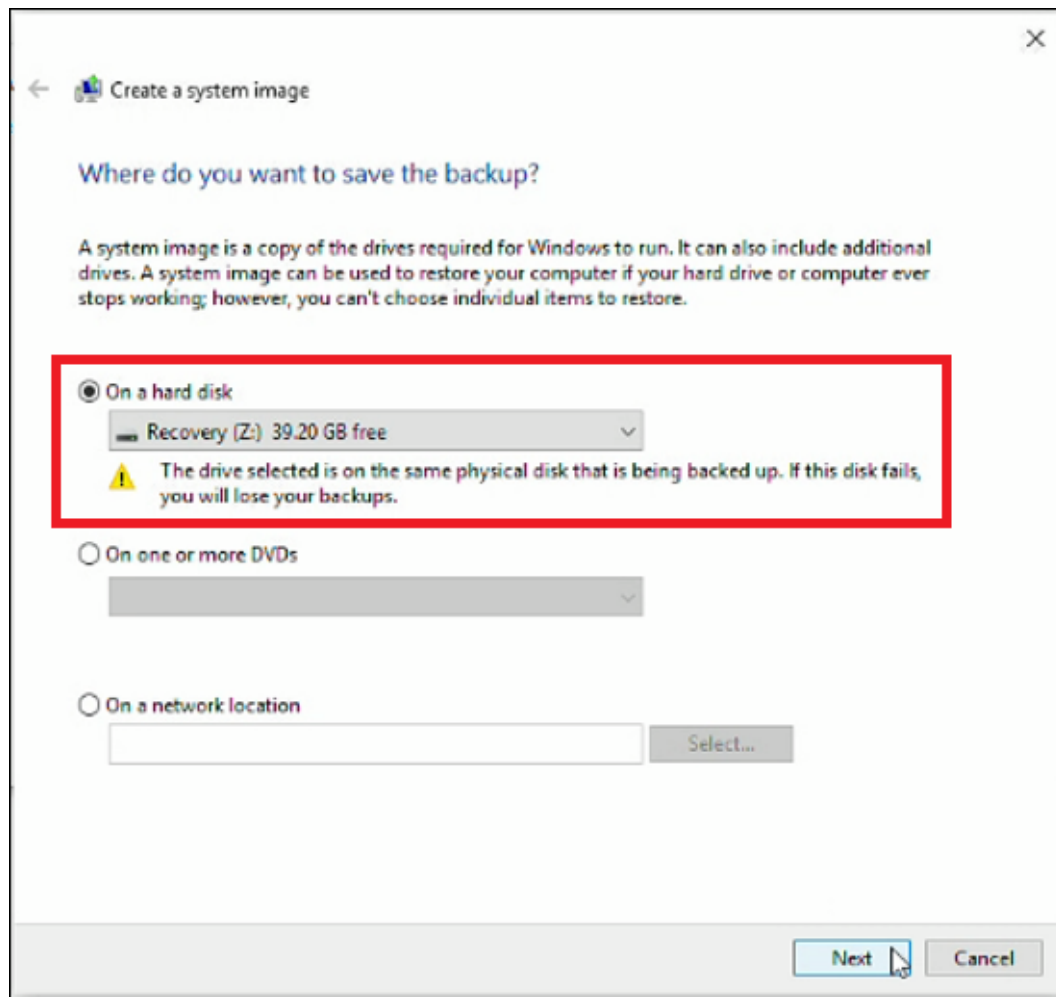


3) Select “**Create a System Image**”.

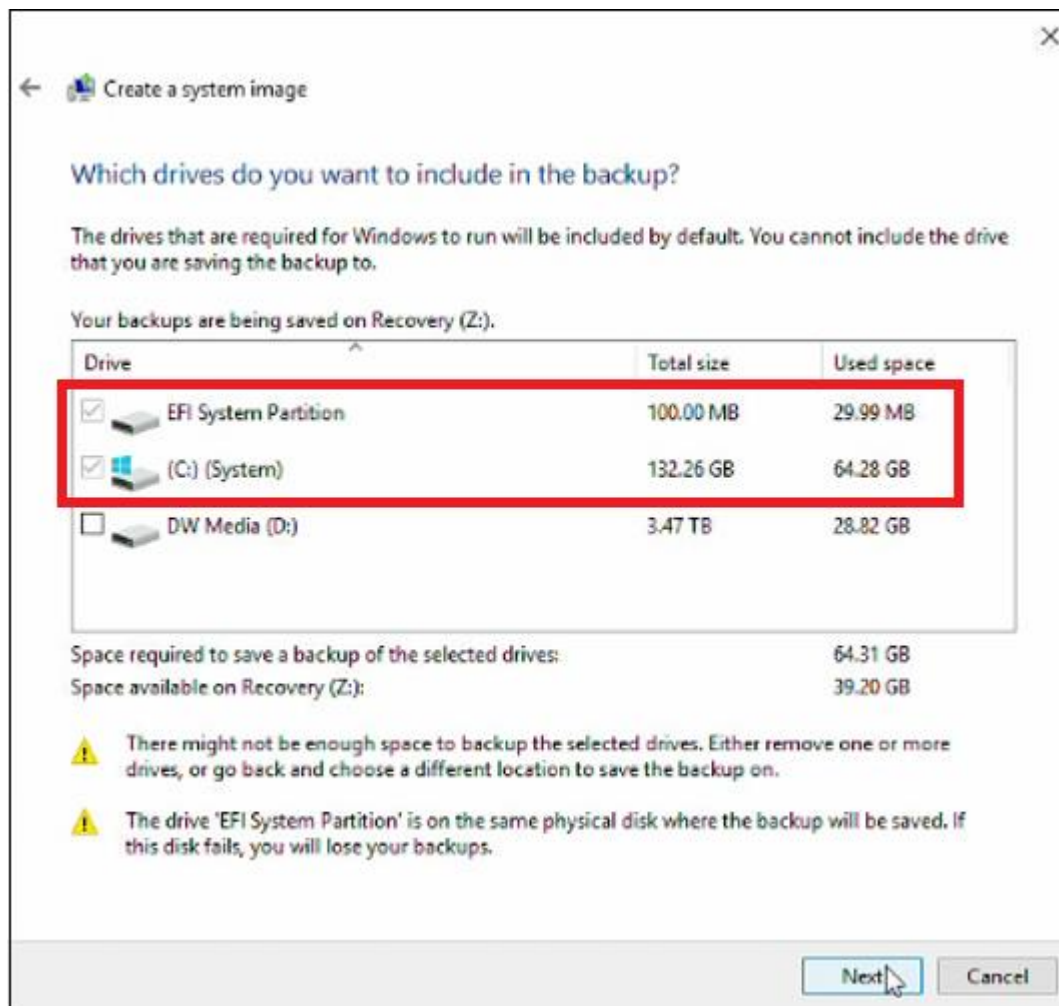


4) The *Create a system image* window will display.

Select the “**On a hard disk**” option and set the “**Recovery (Z:)**” drive as the selected partition.

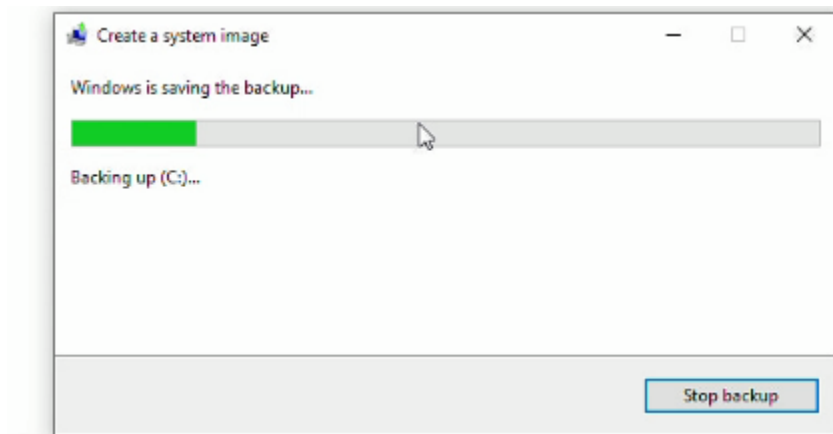
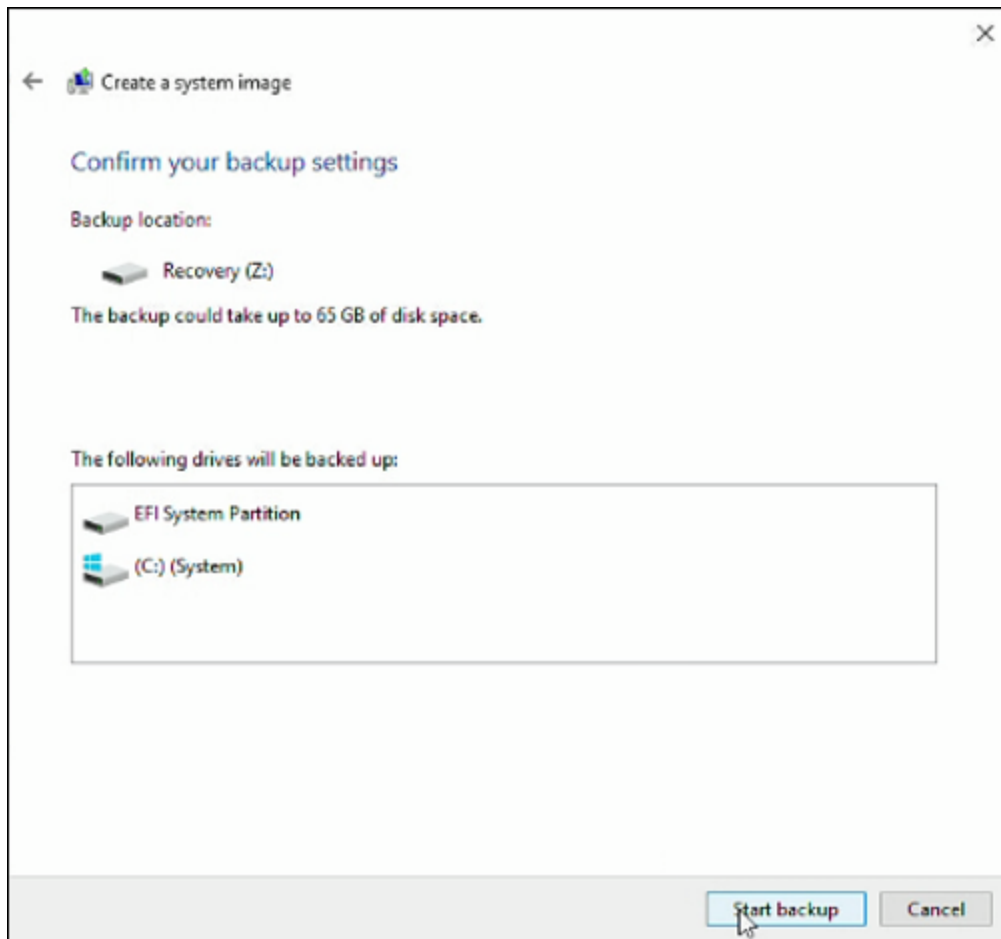


- 5) Make sure that the "**EFI System Partition**" and the "**(C:) (System)**" options are selected for the backup, then click the "**Next**" button.



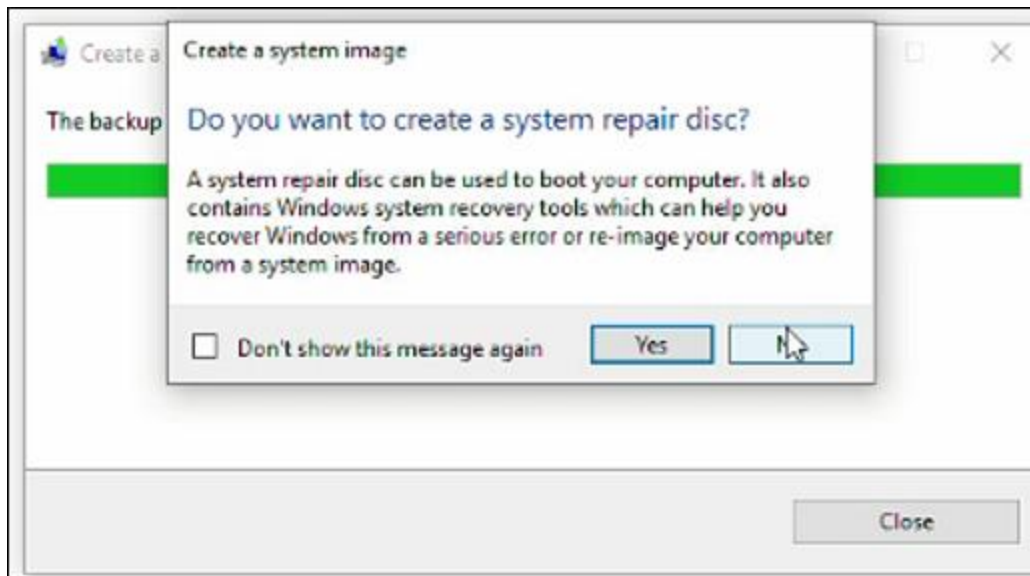
6) Confirm your backup settings and click the **"Start Backup"** button.

Allow the system to create the backup image. You can use the progress bar to track the process.



7) The system will inquire if you want to create a repair disk.

Select the **“No”** option and allow the backup image creation to complete.



- 8) Once the backup image creation has completed, you may close the *Backup and Restore* window.

The OS image at the time that the backup was created will now be the copy that the system will revert to if the integrated recovery option is ever used.