

DW Spectrum Installation and Usage Guide



Date: Friday, 26 November 2021
Authors: Justin Bateson

Contents

Overview.....	3
Features.....	4
Change Log.....	5
Version 20210517.....	5
DW Spectrum Basic Setup.....	6
Configure the driver.....	7
Camera Properties.....	7
Authentication.....	7
Advanced Properties.....	7
Snapshot Settings.....	7
RTSP Settings.....	7
Events.....	7
DW Spectrum Set up Event Rule to send a "Do HTTP Request" Action to Control4.....	8
Action.....	11
Event.....	12
Setup Control4 to handle a Do HTTP Request Action.....	13
Programming.....	14

Overview

This driver integrates IP cameras available via Digital Watchdog's Spectrum IPVMS solution with Control4.

Not only can you view a camera via Control4's UI, you can also send events to DW Spectrum programatically and have events sent to Control4 from DW Spectrum.

Features

- View live video stream from DW Spectrum cameras
- Get snapshots from the camera for use with Push Notifications
- Configure and send events from Control4 to DW Spectrum's Event Log
- Receive and program against events from DW Spectrum

Change Log

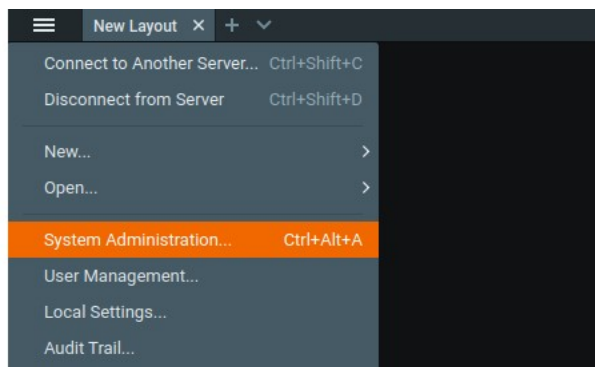
Version 20210517

Initial release

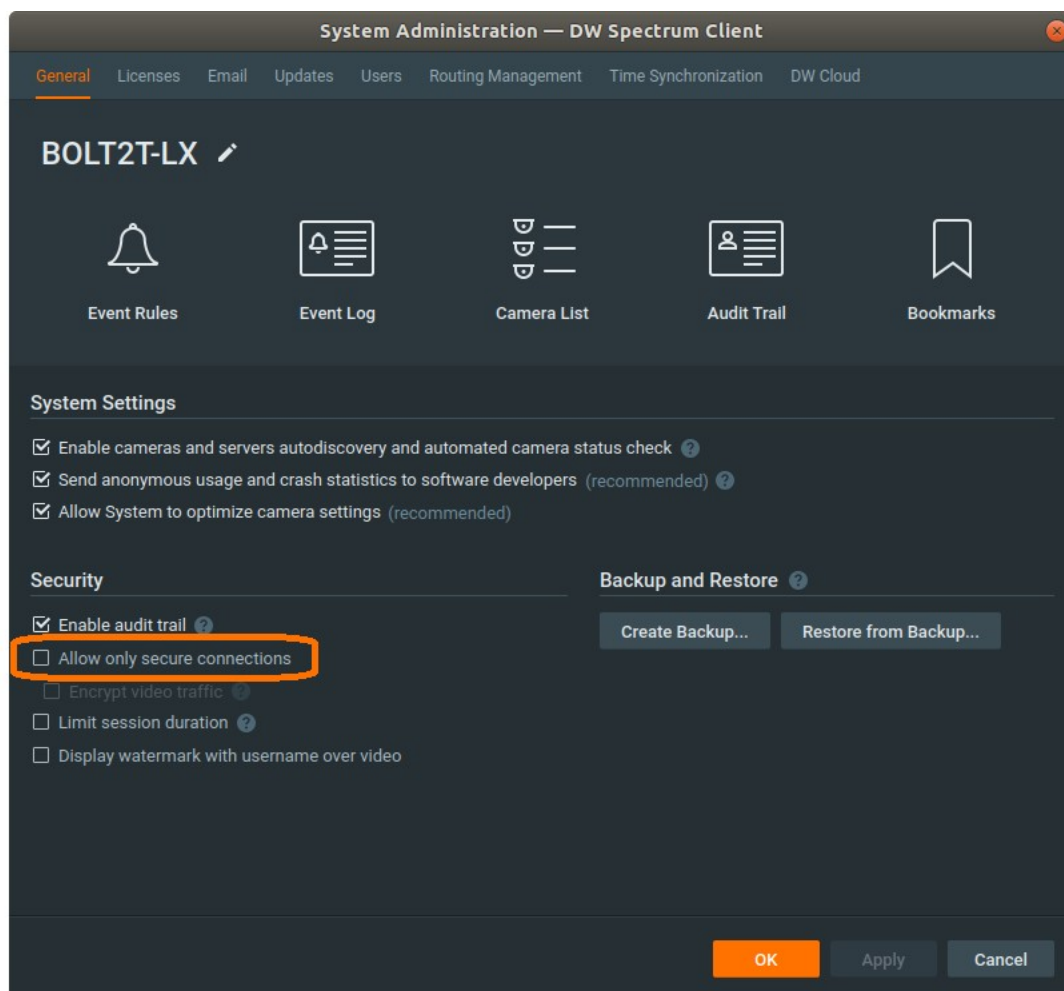
DW Spectrum Basic Setup

For Control4 to communicate with DW Spectrum, we need to change the secure connections setting.

1. Select the **Menu** button and then **System Administration...**



2. On the **General** tab, untick **Allow only secure connections**



Configure the driver

1. Add the driver to Composer
2. Search for "DW Spectrum IP Camera" in Composer and add the driver to the project

Camera Properties

3. Enter the Hostname / IP Address of the DW Spectrum device
4. Enter the **HTTP Port** of the DW Spectrum device. This should be **7001** by default
5. Enter the **RTSP Port** of the DW Spectrum device. This should be **7001** by default

Authentication

6. Tick **Required**
7. Enter the **Username** required to access DW Spectrum
8. Enter the **Password** required to access DW Spectrum
9. Set **Type** to **Digest**

Advanced Properties

10. Choose your preferred camera from the **Available Cameras** property, which should now be populated with all the cameras configured in DW Spectrum

Snapshot Settings

You can modify the size of the snapshot image which is displayed in the Cameras grid view on Control4's UI and sent as an attachment to Control4's mobile app. We don't recommend increasing these values.

RTSP Settings

It is possible to change the resolution of the video stream should you have issues with a higher resolution

Events

Use the fields in this section to handle events that are sent using DW Spectrum's Event Rules "Do HTTP Request" Action

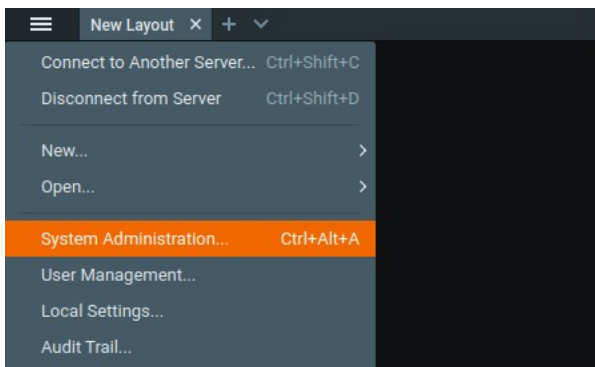
See the section **Setup Control4 to handle a "Do HTTP Request" Action** for detailed configuration

DW Spectrum Set up Event Rule to send a "Do HTTP Request" Action to Control4

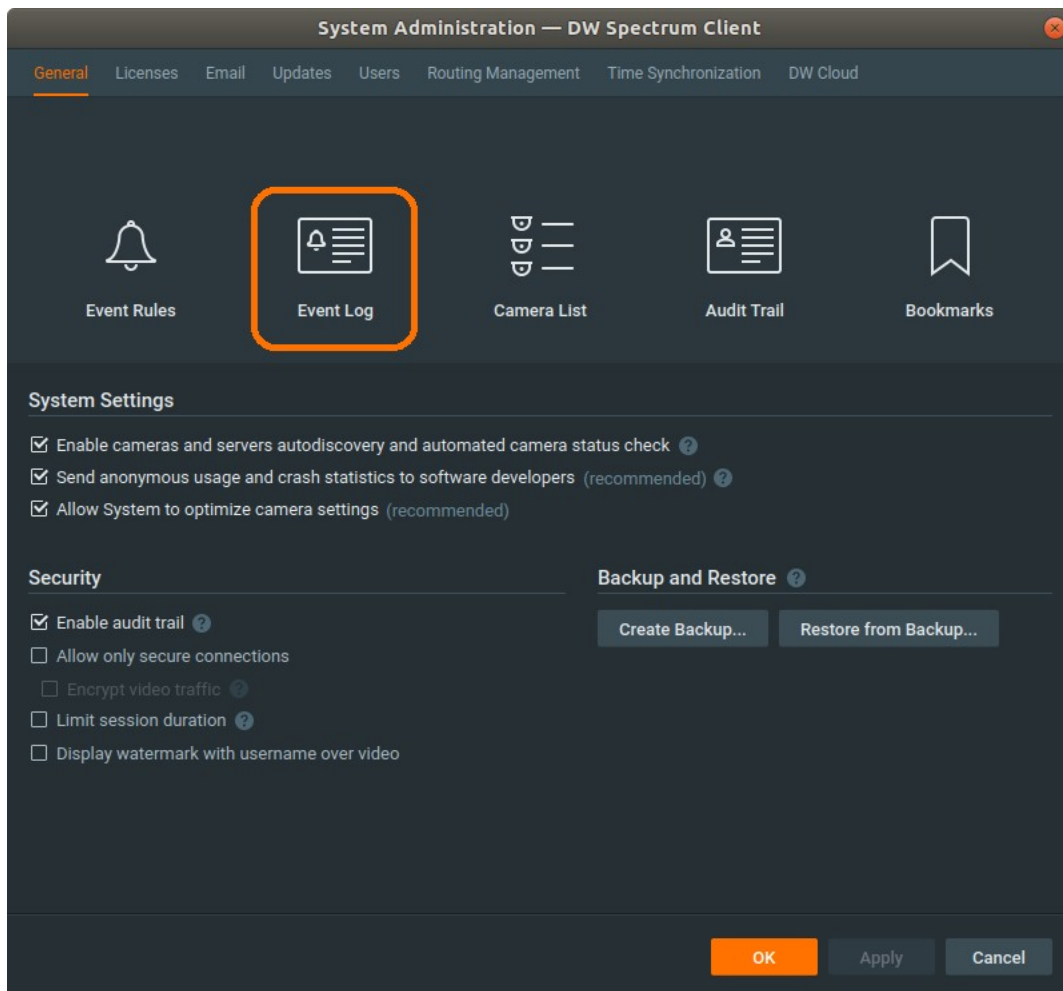
Below will walk you through a simple set up of an event rule that will trigger a control binding on the Control4 driver

Log in to DW Spectrum

1. Click on the Main Menu button (hamburger button)
2. Select **System Administration...**



3. Select the **Event Log** icon



4. Select Event Rules...

Event Log — DW Spectrum Client

11/15/21

11/22/21

Any Event

Any Camera

Any Action

Q

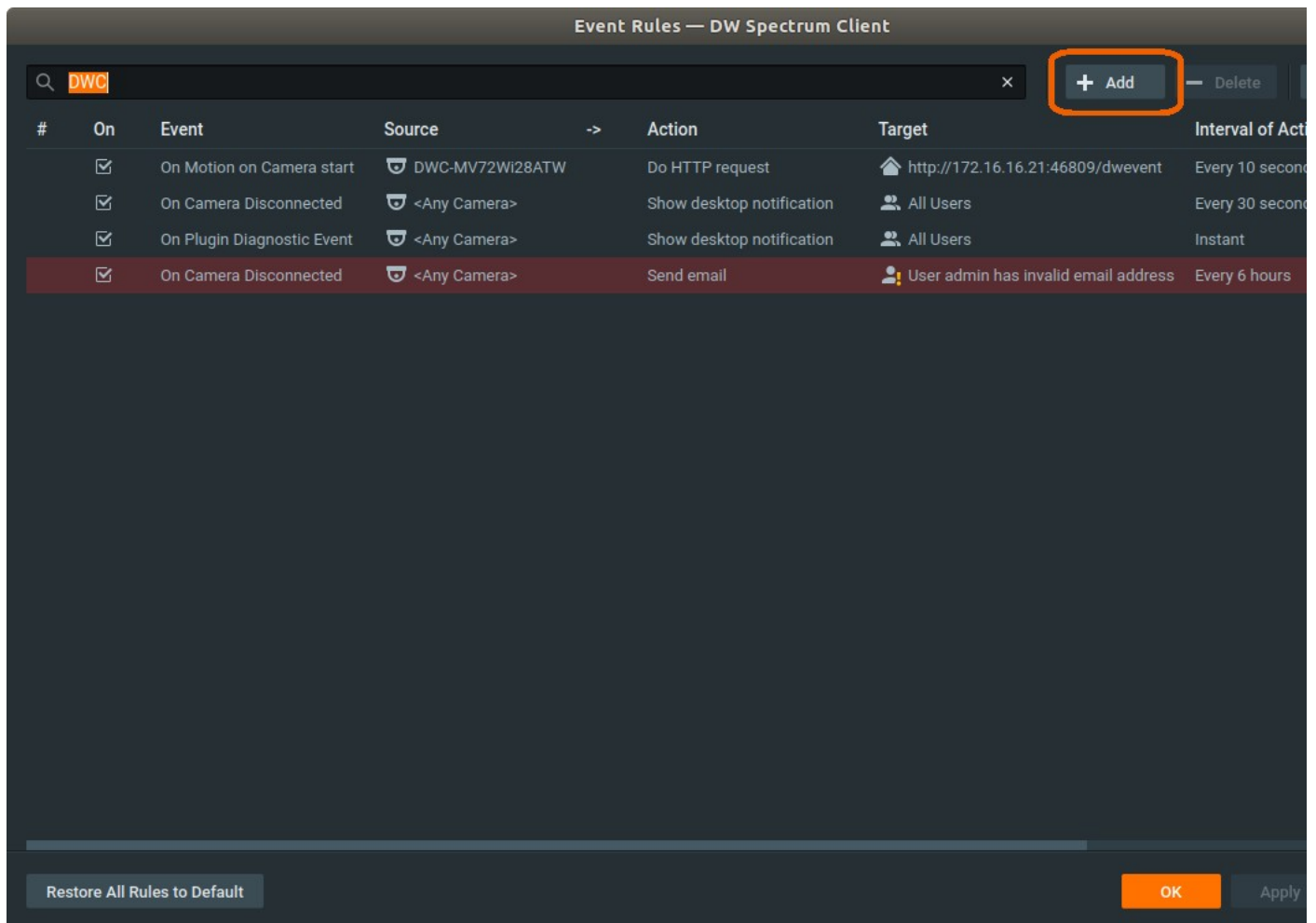
Description

Date/Time	Event	Source	Action	Target	Description
11/22/21 5:18:57 PM	Motion on Camera	DWC-MV72Wi28ATW	Do HTTP request	http://172.16.16.21:46809/dwevent	Motion video
11/22/21 5:18:25 PM	Motion on Camera	DWC-MV72Wi28ATW	Do HTTP request	http://172.16.16.21:46809/dwevent	Motion video
11/22/21 5:17:48 PM	Motion on Camera	DWC-MV72Wi28ATW	Do HTTP request	http://172.16.16.21:46809/dwevent	Motion video
11/22/21 5:17:36 PM	Motion on Camera	DWC-MV72Wi28ATW	Do HTTP request	http://172.16.16.21:46809/dwevent	Motion video
11/22/21 5:17:27 PM	Motion on Camera	DWC-MV72Wi28ATW	Do HTTP request	http://172.16.16.21:46809/dwevent	Motion video
11/22/21 5:16:54 PM	Motion on Camera	DWC-MV72Wi28ATW	Do HTTP request	http://172.16.16.21:46809/dwevent	Motion video
11/22/21 5:14:59 PM	Motion on Camera	DWC-MV72Wi28ATW	Do HTTP request	http://172.16.16.21:46809/dwevent	Motion video
11/22/21 5:14:45 PM	Motion on Camera	DWC-MV72Wi28ATW	Do HTTP request	http://172.16.16.21:46809/dwevent	Motion video
11/22/21 5:14:29 PM	Motion on Camera	DWC-MV72Wi28ATW	Do HTTP request	http://172.16.16.21:46809/dwevent	Motion video
11/22/21 5:14:14 PM	Motion on Camera	DWC-MV72Wi28ATW	Do HTTP request	http://172.16.16.21:46809/dwevent	Motion video
11/22/21 5:13:07 PM	Motion on Camera	DWC-MV72Wi28ATW	Do HTTP request	http://172.16.16.21:46809/dwevent	Motion video
11/22/21 5:12:46 PM	Motion on Camera	DWC-MV72Wi28ATW	Do HTTP request	http://172.16.16.21:46809/dwevent	Motion video
11/22/21 5:11:39 PM	Motion on Camera	DWC-MV72Wi28ATW	Do HTTP request	http://172.16.16.21:46809/dwevent	Motion video
11/22/21 5:10:45 PM	Motion on Camera	DWC-MV72Wi28ATW	Do HTTP request	http://172.16.16.21:46809/dwevent	Motion video
11/22/21 5:10:14 PM	Motion on Camera	DWC-MV72Wi28ATW	Do HTTP request	http://172.16.16.21:46809/dwevent	Motion video

Event log for period from Monday, November 15, 2021 to Monday, November 22, 2021 - 610 events found

Event Rules...

5. Select the **Add** button



Action

Under the Action section, you need to configure it exactly as is laid out below.

Do needs to be **Do HTTP Request**

HTTP URL needs to be the contents of the **Webserver URL** in the Properties tab of the driver

HTTP Content needs to be a single line that matches an event listed in the **Select Event** drop down list in the Properties tab of the driver

Leave **Content Type**, **Login**, **Password**, and **Authentication type** as **Auto**

Request type must be **POST**

Event Rules — DW Spectrum Client

Filter by cameras...

+ Add

— Delete

#	On	Event	Source	->	Action	Target	Interval of Acti
	<input checked="" type="checkbox"/>	On Server Conflict	<System>		Show desktop notification	All Users	Every 30 second
*	<input checked="" type="checkbox"/>	On Motion on Camera start	DWC-MV72Wi28ATW		Do HTTP request	http://172.16.16.21:46809/dwevent	Every 10 second
	<input checked="" type="checkbox"/>	On License Issue	<System>		Show desktop notification	All Users	Every 30 second

Event

When

Motion on Camera

Starts

At

DWC-MV72Wi28ATW

Schedule...

Action

Do

Do HTTP request

☒ Interval of action : No more than once per

10

sec

HTTP URL

Webserver URL

http://172.16.16.21:46857/dwevent

Select Event

dw_motion

HTTP content

Content type

Auto

Login

Login to authenticate (optional)

Authentication type

Password

Password to authenticate (opt...

Request type

Comments:

Restore All Rules to Default

OK

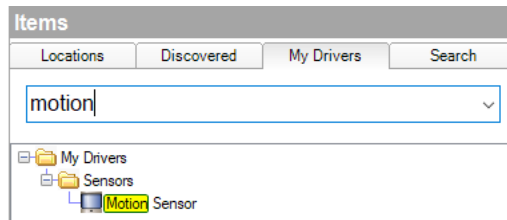
Apply

Event

Under the Event section, configure the trigger as required

Setup Control4 to handle a Do HTTP Request Action

Add a **Motion Detection** driver from the **My Drivers** tab



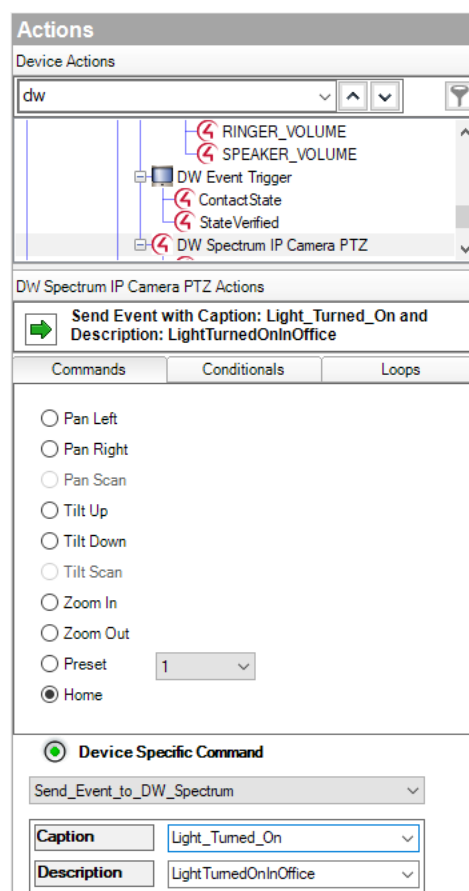
Under the Events Settings in the Properties tab of the driver:

1. Click the drop down list for **Select Event**
2. Select **Event 1** and press the **Set** button
3. Rename the event in the **Change Event Name** field to match **HTTP Content** from the above **Action** configuration and press the **Set** button
4. Select the **Connections** section in Composer
5. Navigate to the DW Spectrum driver
6. You should now see

Programming

It is possible with this driver to send events to DW Spectrum's Event Log.

1. Open Composer
2. Goto the Programming section
3. Select the DW Spectrum driver from the **Device Actions** section on the right of the window
4. Select **Device Specific Command**
5. Enter the **Caption**
6. Enter the **Description**



Note: **It's recommended that you don't include any spaces in the Caption or the Description

7. Now drag the **Action** green arrow command over to your selected **Device Event's** Script Action