

REACTOR

SUB-OHM TANK

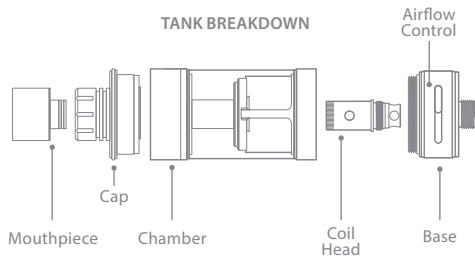
v.2

INTRODUCTION

Thank you for purchasing the REACTOR tank. Please read this manual carefully before using to ensure optimal performance.

The REACTOR tank boasts massive airflow featuring eight adjustable airflow increments that produce huge clouds of vapor and immense flavor. With the ability to hold up to 5 ml of e-liquid, the REACTOR tank houses dual sub-ohm coil heads wrapped in organic cotton. Loading the REACTOR tank is quick and easy with its convenient leak-resistant, top-fill design. The remarkably efficient REACTOR tank is constructed of the finest quality materials, ensuring a long lifespan and the purest possible vaping experience.

COMPONENTS



FILLING YOUR TANK

When to Refill Tanks

REACTOR tanks perform best when regularly filled with at least 2 ml of e-liquid. This ensures the heating element remains moist during use, and will extend the overall life of the coil head. It's recommended that tanks be refilled once the e-liquid level drops below the top of the coil head.

How to Refill Tanks

The REACTOR tank can be filled without the need to remove it from the battery. First, unscrew the entire tank from the battery. Once removed, hold the REACTOR tank with the mouthpiece facing upright. With your thumb and index finger directly underneath the grooves of the mouthpiece, gently twist counter-clockwise

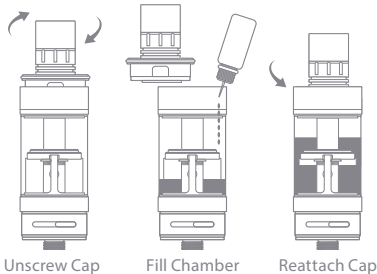
FILLING YOUR TANK

and pull upward to remove the REACTOR tank's cap. Once the cap is removed, pour the e-liquid in either of the two bean shaped openings.

NOTE: Be sure not to fill the center hole of the chamber as the e-liquid will flow directly out of the tank.

The chamber should be filled $\frac{3}{4}$ of the way up. Once filled, reattach the REACTOR tank's cap by inserting it in the grooves and slowly twisting clockwise until snugly fastened. After allowing 60 seconds for the e-liquid to soak into the coil head, your REACTOR tank is ready for use.

FILLING YOUR TANK



TANK FEATURES

Top-Fill Design

The REACTOR tank comes standard with a convenient top-fill design, making it simple to fill with e-liquid. This highly efficient tank design results in a cleaner overall filling process, eliminating the need to detach the REACTOR tank from the battery while filling.

Interchangeable Mouthpiece

The REACTOR tank is equipped with a wide-bore stainless steel mouthpiece. This mouthpiece is interchangeable based on personal preference, and will have no effect on the overall performance of the system.

TANK FEATURES

Adjustable Airflow

The REACTOR tank is equipped with an adjustable airflow system. A wider air hole creates a “looser” draw that results in cooler vapor. A narrow hole creates a “tighter” draw with warmer vapor. Generally, larger airflow is better for lung inhales, while smaller airflow is best suited for mouth inhales. To adjust airflow, twist the ring on the base of the hardware left or right to change the size of the air hole.



COIL HEAD REPLACEMENT

When to Replace the Coil Head

The REACTOR tank is designed with a replaceable center coil head, eliminating the need to replace the entire tank. If you consistently experience a burnt taste when vaping or your tank is no longer producing adequate vapor, it may be time to replace your coil. It is also recommended to change your coils when switching e-liquids to prevent carry over of flavor.

How to Replace the Coil Head

To replace the coil head, first unscrew the entire tank from the battery. Once the tank is removed, hold the tank with mouthpiece side down, and unscrew the base from the chamber by turning

COIL HEAD REPLACEMENT

counter clockwise. Once the base is removed, the coil head will be exposed. Unscrew and remove the old coil head from the base by turning counter-clockwise. Dispose of the old coil head, ensuring it is kept out of reach of children and pets. Attach a new coil head to the base by lining up the threads and turning clockwise until snug. The base should then be reattached to the chamber by lining up the threads and turning clockwise until snug. After allowing 60 seconds for e-liquid to soak into the coil head, your tank is ready for use.



TANK CLEANING

When to Clean Tanks

Your REACTOR tank should be cleaned on a regular basis to remove any residue that may collect inside the chamber. It is also highly recommended to clean the tank when switching between e-liquids to ensure there is no carry over of flavor.

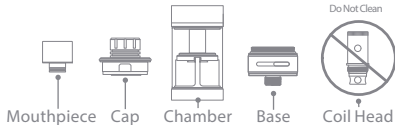
How to Clean Tanks

In order to thoroughly clean the REACTOR tank, each individual component should be disassembled. First, unscrew the entire tank from the battery. Once removed, hold the REACTOR tank with the mouthpiece side down and unscrew the base from the chamber by turning counter-clockwise. Dispose of any remaining e-liquid. Unscrew and remove the coil head from the base by

TANK CLEANING

turning counter-clockwise. Dispose of the coil head or store in a safe place for future usage. Remove the cap with mouthpiece and rinse all components (except for the coil head) under warm water until all remaining e-liquid is extracted. You may use a cotton swab to clear away any leftover e-liquid.

Components to Clean



WARNINGS

Storage: The REACTOR tank should be kept out of reach of children and pets and stored safely in a dry environment.

Improper Usage: The use of any third-party accessories may lead to malfunction and/or damage of this product.

Guarantee: The REACTOR offers a 30-day satisfaction guarantee. However, e-liquids and coil assemblies are consumable items and will not be refunded.

Warranty: Claims for products damaged by improper usage will not be accepted. This includes, but is not limited to, the use of third-party hardware and/or improper handling.



Nicopure Labs, LLC.

5909 NW 18th Drive | Gainesville, FL 32653

nicopure.com