

TRACER

SUB-OHM TANK

v.2

INTRODUCTION

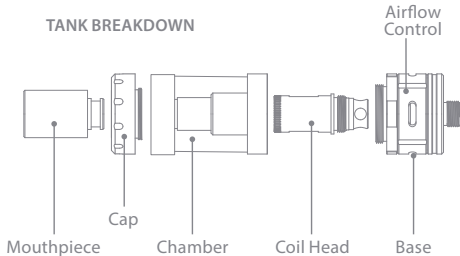
Thank you for purchasing the TRACER tank. Please read this manual carefully before using to ensure optimal performance.

This high performance tank is the perfect combination of style and functionality. Along with a four-port adjustable airflow valve and a 4 ml capacity, the TRACER tank houses a sub-ohm coil head wrapped in organic cotton. Loading the TRACER tank is quick and easy with its specially designed anti-leak, top-fill feature.

The remarkably efficient TRACER tank is constructed of the finest quality materials, ensuring a long lifespan and the purest possible vaping experience.

TANK COMPONENTS

TANK BREAKDOWN



FILLING YOUR TANK

When to Refill Tanks

TRACER tanks perform best when filled with at least 2 ml of e-liquid continuously. This ensures the heating element remains moist during use, and will extend the overall life of the coil head. It is recommended that tanks be refilled once the e-liquid level drops below the top of the coil head.

How to Refill Tanks

The TRACER tank can be filled without the need to remove it from the battery. To fill, ensure the tank is oriented with the mouthpiece facing upright. With your thumb and index finger directly underneath the grooves of the mouthpiece, gently twist

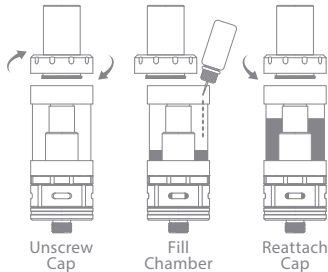
FILLING YOUR TANK

counter-clockwise to unscrew the TRACER tank's cap. Once the cap is removed, carefully pour e-liquid into either of the two bean shaped openings.

NOTE: Be sure not to fill the center hole of the chamber as the e-liquid will flow directly out of the tank.

The chamber should be filled $\frac{3}{4}$ of the way up. Once filled, reattach the TRACER tank's cap by lining up the threads and slowly twisting clockwise until snugly fastened. After allowing 60 seconds for the e-liquid to soak into the coil head, your TRACER tank is ready for use.

FILLING YOUR TANK



TANK FEATURES

Top-Fill Design

The TRACER tank comes equipped with a convenient top-fill design, making it simple to fill with e-liquid. This highly efficient design results in a cleaner overall filling process, eliminating the need to detach the TRACER tank from the battery while filling.

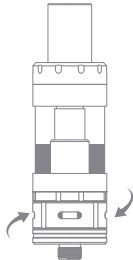
Interchangeable Mouthpiece

The TRACER tank comes standard with both a stainless steel and glass mouthpiece. These components are interchangeable based on personal preference and will not affect the overall performance of the TRACER tank.

TANK FEATURES

Adjustable Airflow

The TRACER tank is equipped with an adjustable airflow system. A wider air hole creates a “looser” draw that results in cooler vapor. A narrow hole creates a “tighter” draw with warmer vapor. Generally, larger airflow is better for lung inhales, while smaller airflow is best suited for mouth inhales. To adjust airflow, twist the ring on the base of the hardware left or right to change the size of the air hole.



COIL HEAD REPLACEMENT

When to Replace the Coil Head

The TRACER tank is designed with a replaceable center coil head. If you consistently experience a burnt taste when vaping or your TRACER tank is no longer producing adequate vapor, it may be time to replace the coil head. It is also recommended to change the coil head when switching e-liquid to prevent carry over of flavor.

How to Replace the Coil Head

To replace the TRACER coil head, first unscrew the entire tank from the battery. Once the tank is removed, hold the tank mouthpiece side down and unscrew the base from the

COIL HEAD REPLACEMENT

chamber. Once the base is removed, the coil head will be exposed. Unscrew and remove the old coil head from the base by turning counter-clockwise. Dispose of the old coil head, ensuring it is kept out of reach of children and pets. Attach a new coil head to the base by lining up the threads and turning clockwise until snug. Fill as needed and allow 60 seconds for e-liquid to soak into the coil head before resuming use.



TANK CLEANING

When to Clean Tanks

Your TRACER tank should be cleaned on a regular basis to remove any residue that may collect inside the chamber. It is also highly recommended to clean the tank when switching between e-liquids to ensure there is no carry over of flavor.

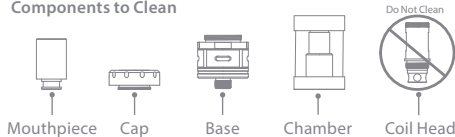
How to Clean Tanks

In order to thoroughly clean the tank, each individual component should be disassembled. First, unscrew the entire tank from the battery. Once removed, hold the TRACER tank with the mouthpiece side down and unscrew the base from the chamber by turning counter-clockwise. Dispose of any remaining e-liquid. Unscrew and remove the coil head from

TANK CLEANING

the base by turning counter-clockwise. Dispose of the coil head or store in a safe place for future usage. Remove the cap with mouthpiece and rinse all components (except for the coil head) under warm water until all remaining e-liquid is extracted. You may use a cotton swab to clear away any lingering e-liquid.

Components to Clean



WARNINGS

Storage: The TRACER tank should be kept out of reach of children and pets and stored safely in a dry environment.

Improper Usage: The use of any third-party accessories may lead to malfunction and/or damage of this product.

Guarantee: The TRACER offers a 30-day satisfaction guarantee. However, e-liquids and coil assemblies are consumable items and will not be refunded.

Warranty: Claims for products damaged by improper usage will not be accepted. This includes, but is not limited to, the use of third-party hardware and/or improper handling.



Nicopure Labs, LLC.
5909 NW 18th Drive | Gainesville, FL 32653
nicopure.com