

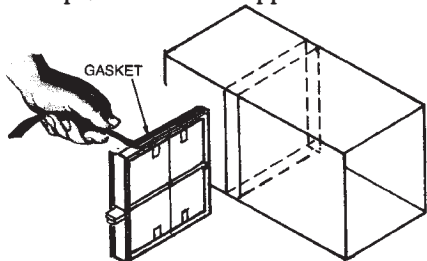
DuroZone

INSTALLATION INSTRUCTIONS

MS SERIES MULTI SIZE DAMPER

INSTALLATION IN DUCT

1. Fit the Neoprene weather strip (included) around the damper frame before installing the damper. (Do Not cover the blade pivot at the end opposite the motor.)



2. At the selected damper location, cut a 3 3/8 inch-wide slot in the side of the duct.

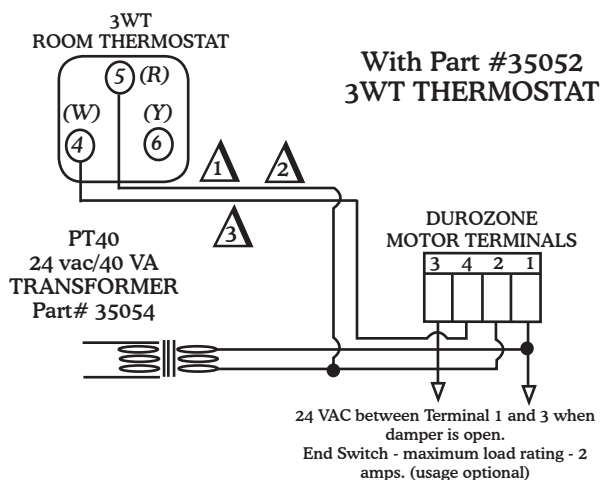
3. Slide the damper into position in the duct.

4. Slide the Quick Clip Fasteners outward to secure the damper.

LED Indicator

Bi-Color LED indicates Red when damper is closed and Green when damper is open.

TYPICAL WIRING FOR A STAND ALONE DAMPER WITH CONTROLLING THERMOSTAT.



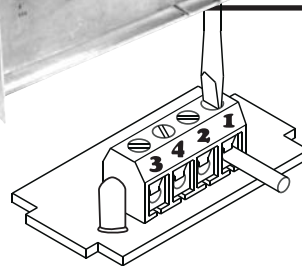
1 Reverse 4(W) with 6(Y) for cooling.

2 Use #35056 SB-1 SubBase when controlling heating and cooling air flow.

3 Standard Heat/Cool thermostat can be used to control Air Flow by jumping terminal W and Y and then wiring to damper terminal #4. Wire R on the thermostat to damper terminal #2.

MOTOR TERMINALS

1. Trim 1/4" off the end of the Control Wiring.
2. Loosen the screw on the Damper Motor Terminal Strip.
3. Insert the trimmed Control Wire.
4. Tighten the screw down.



MOTOR TERMINAL IDENTIFICATION

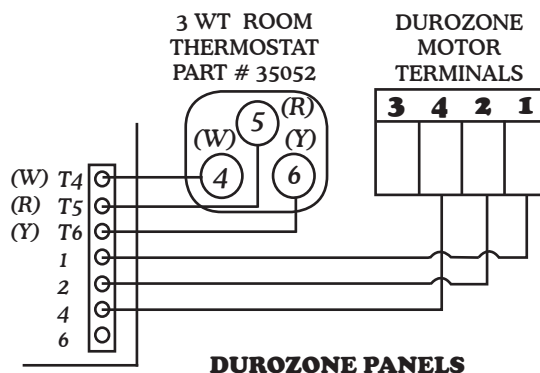
Terminals 1 & 2: 24 volt input.

Terminals 4 & 2: Thermostat Connections - Closing 4 & 2 will open the damper. Opening 4 & 2 will close the damper.

Terminal 3: End switch - Connecting an equipment relay across 1 & 3 of the damper motor will activate the relay when the damper is open.

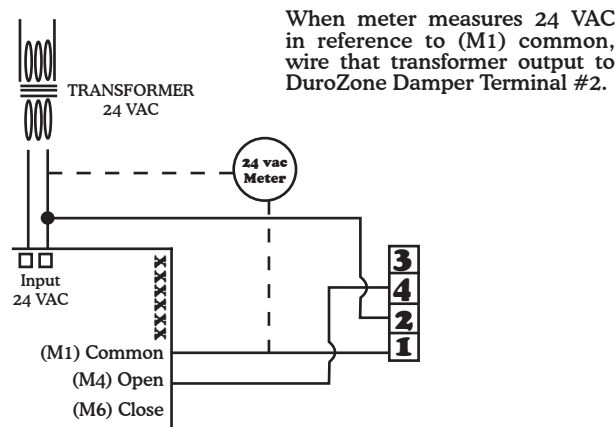
TYPICAL WIRING

With Part# 35226 (SMZ2SW) / 35227 (SMZ3SW)
35228 (SMZ4SW) / 35229 (SMZAC) / 35235 (JTZHP)
35236 (ED3) / 35237 (ED4)



* M6 is for Spring Open dampers and some non DuroZone Dampers

TYPICAL WIRING FOR DUROZONE DAMPERS TO NON DUROZONE ZONING PANELS

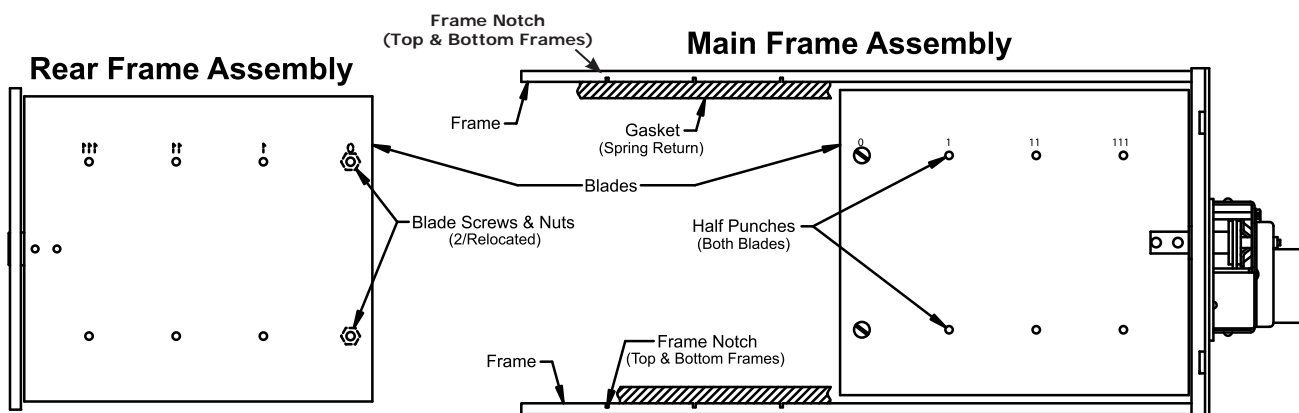
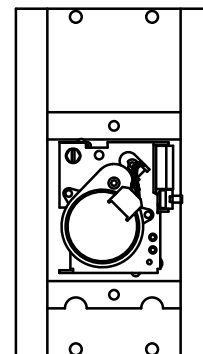
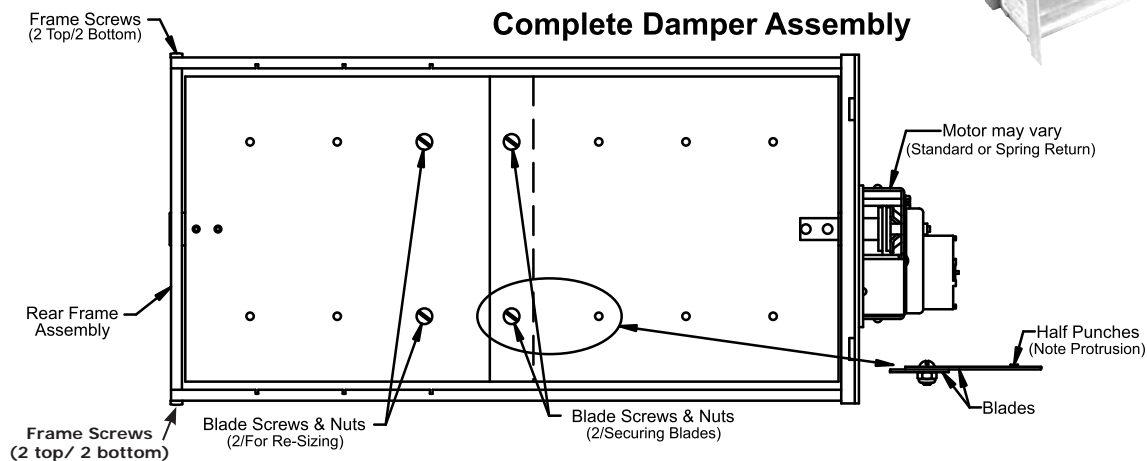
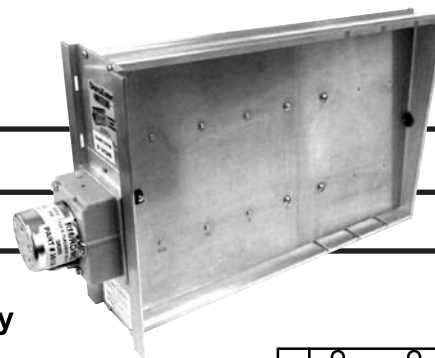


NOTE: If the Zone Panel has a terminal M2 or 2, wire that panel to damper terminal #2 instead of the power supply.

DuroZone®

IN-FIELD RE-SIZING INSTRUCTIONS

MS SERIES MULTI SIZE DAMPER



1. To adjust the damper to the duct size, disassemble the damper by removing but not discarding the 'Frame Screws' (qty-4). Remove but do not discard the 'Blade Screws and Nuts' (qty-4). Separate the 'Blades' from each other ending up with a 'Rear Frame Assembly' and a 'Main Frame Assembly'.

2. Cut at the appropriate 'Frame notch' (through the gasket if it is present) to create the desired size. The number of notches cut will determine which set of 'Half Punches' are removed.

Note: The (o) holes will always be in use.

3. Select the appropriate blade screw locations:

If the 1st 'Frame Notch' is cut off then the (1) 'Half Punch' set is removed.

If the 2nd 'Frame Notch' is cut off then the (11) 'Half Punch' set is removed.

If the 3rd 'Frame Notch' is cut off then the (111) 'Half Punch' set is removed.

4. Slide the 'Rear Frame Assembly' and the 'Main Frame Assembly' together (trim the 'Gasket' if present) and secure with the 'Frame Screws' (qty-4). Place the 'Blade Screws and Nuts' in the end blade (o) holes as shown. Note the orientation of the 'Half Punches' to the 'Blades' and add the second pair of 'Blade Screws and Nuts'.

Duro Dyne East • Bay Shore, NY 11706 • Phone: 631-249-9000 • Fax: 631-249-8346

Duro Dyne Midwest • Fairfield, OH 45011 • Phone: 513-870-6000 • Fax: 513-870-6005

Duro Dyne West • Santa Fe Springs, CA 90670 • Phone: 562-926-1774 • Fax: 562-926-5778

Duro Dyne Canada • Lachine • Quebec • Canada • Phone: 514-422-9760 • Fax: 514-636-0328

©2008 Duro Dyne Corporation
Printed in USA 5/2008
BI035415

ALL DuroZone DAMPERS FEATURE:

• 5 year limited warranty • Controlled bypass • Maintenance free operation • 100% factory testing • Screwless terminals • Custom dampers and special controls are available on request.