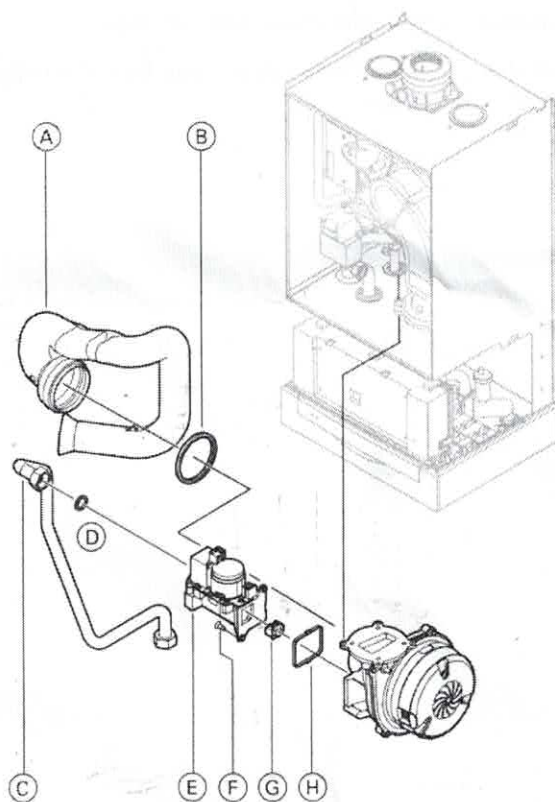


# Vitodens 200-W, B2HA/B2HB 19-35



**Note:** The representative drawing above shows the B2HA.

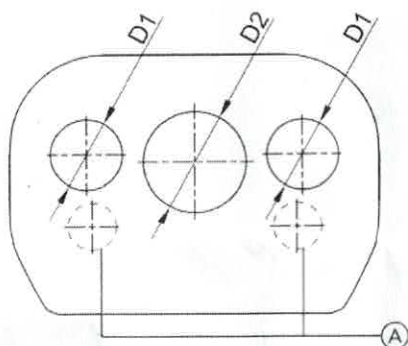
## Legend

Tightening torque of fasteners:

Ⓒ 22 lb.ft (30 Nm)

Ⓕ 35 lb.in. (4 Nm)

## Identification of the Fixed Gas Orifice



B2HA, B2HB	19	26, 28, 35
Color	yellow	black
Stamped No. Ⓐ	02	06
D1	2.25 mm	3.20 mm
D2	2.25 mm	4.20 mm

1. Remove the Venturi extension Ⓐ and gasket Ⓑ.
2. Loosen the gas connection pipe Ⓒ.
3. Remove the two 4 mm Allen screws Ⓕ and remove gas valve Ⓔ.
4. Remove, using pliers, and discard shipping plug in replacement gas valve outlet (location Ⓖ) before installing orifice.
5. Remove, using pliers, orifice Ⓖ out of gas valve being replaced and insert into new gas valve.

**Note:** Refer to 'Identification of the Fixed Gas Orifice' Chart.

## IMPORTANT

Install new gas connection pipe gasket Ⓓ and profile gasket Ⓕ as supplied.

6. Set adjusting screw on gas valve to:  
1 for natural gas or  
2 for liquid propane gas
7. Reassemble as per steps 3 through 1 respectively and torque fasteners (see legend).
8. Install the front enclosure panel.
9. Place the boiler back in operation.



## WARNING

Gas leaks can lead to explosions.

Check the gas pipe seals to ensure that there are no leaks.



Refer to the Installation and Service Instructions applicable to this boiler.