



Just Add Drivers

A user guide for the following products:

- JustAddDrivers Configuration Tool
 - AMX Switching Module
 - Control4 Switching Module
 - Crestron Switching Module
- Crestron POE Add-on Module
 - RTI Switching Module
- AMX Serial-over-IP Module
- Control4 Serial-over-IP Module
- Crestron Serial-over-IP Module
 - RTI Serial-over-IP Module



INTRODUCTION	5
Patching Scheme for managed switches	5
Layer 3 switch – Cisco SG 300, SG 500 Series, Luxul AMS/XMS	6
Layer 2 switches – Netgear 7000 series, Pakedown S24x.....	6
JUST ADD DRIVERS CONFIGURATION TOOL	7
Introduction	7
Configuring a System with a Single Switch	7
STEP 1: Connecting Your Switch	7
STEP 2: Choosing Your Switch	8
STEP 3: Choosing the Configuration For Your Switch	9
STEP 4: Configuring and Connecting Your Just Add Power Devices	11
Configuring a System with Multiple Cisco Switches	14
STEP 1: Connecting Your Master Switch	14
STEP 2: Choosing Your Switch	14
STEP 3: Configuring the Stack.....	15
STEP 4: Configuring and Connecting Your Just Add Power Devices	20
Configuring a System with Multiple Luxul Switches	23
STEP 1: Connecting Your Master Switch	23
STEP 2: Choosing Your Switch	23
STEP 3: Configuring the Stack.....	24
STEP 4: Configuring and Connecting Your Just Add Power Devices	28
Testing Your System	31
Updating JustAddPower Device Firmware Only.....	36
AMX SWITCHING MODULE	39
Add the module to your project.....	39
Configure Module Parameters	40
Obtaining a Licence Key	40
Interfacing with the Module	41
Commands	41
Feedback	43
Troubleshooting.....	44
CONTROL4 SWITCHING MODULE.....	45
Add the driver to your project	45
Configure Properties.....	45
Configure Network Connection.....	46
Configure A/V Connections.....	46

Advanced Commands (Cisco Switches ONLY)	47
Obtaining a Licence Key	48
Troubleshooting.....	49
CRESTRON SWITCHING MODULE.....	50
Introduction	50
Crestron Configuration	50
Adding the module to your project	50
Configure Properties.....	50
Default Netgear Switch Settings.....	51
Default Pagedge Switch Settings	51
Default Luxul Switch Settings	51
Default Cisco Switch Settings	52
Obtaining a Licence Key	52
Configuring Favourites (Cisco & Luxul Switches Only).....	53
Enabling NVRAM	53
Troubleshooting.....	54
CRESTRON JUST ADD DRIVERS POWER-OVER-ETHERNET ADD ON MODULE.....	55
Add the module to your project.....	55
Configure Properties.....	56
RTI SWITCHING MODULE.....	57
Adding the driver to your project.....	57
Configuration Settings	57
Displaying a Variable	58
Adding an Output Routing Command to a Button	59
Adding an Output – Input Selection Command to a Button.....	59
Adding a Preset Selection Command to a Button	60
Adding a Driver Event	61
Obtaining a Licence Key	62
Troubleshooting.....	63
SERIAL-OVER-IP MODULES.....	64
AMX JUST ADD DRIVERS SERIAL-OVER-IP MODULE	66
Add the module to your project.....	66
Configure Module Parameters	67
Obtaining a Licence Key	67
Interfacing with the Module	67
Commands	67

Feedback	68
CONTROL4 JUST ADD DRIVERS SERIAL-OVER-IP MODULE.....	69
Add the driver to your project	69
Configure Properties	69
Configure Serial Control	70
Programming Commands	70
Obtaining a Licence Key	70
CRESTRON JUST ADD DRIVERS SERIAL-OVER-IP MODULE.....	71
Add the module to your project.....	71
Configure Properties	72
System Resources	73
Obtaining a Licence Key	73
RTI JUST ADD DRIVERS SERIAL-OVER-IP MODULE.....	74
Adding the driver to your project.....	74
Configuration Settings	74
Available Commands	75
Obtaining a Licence Key	75

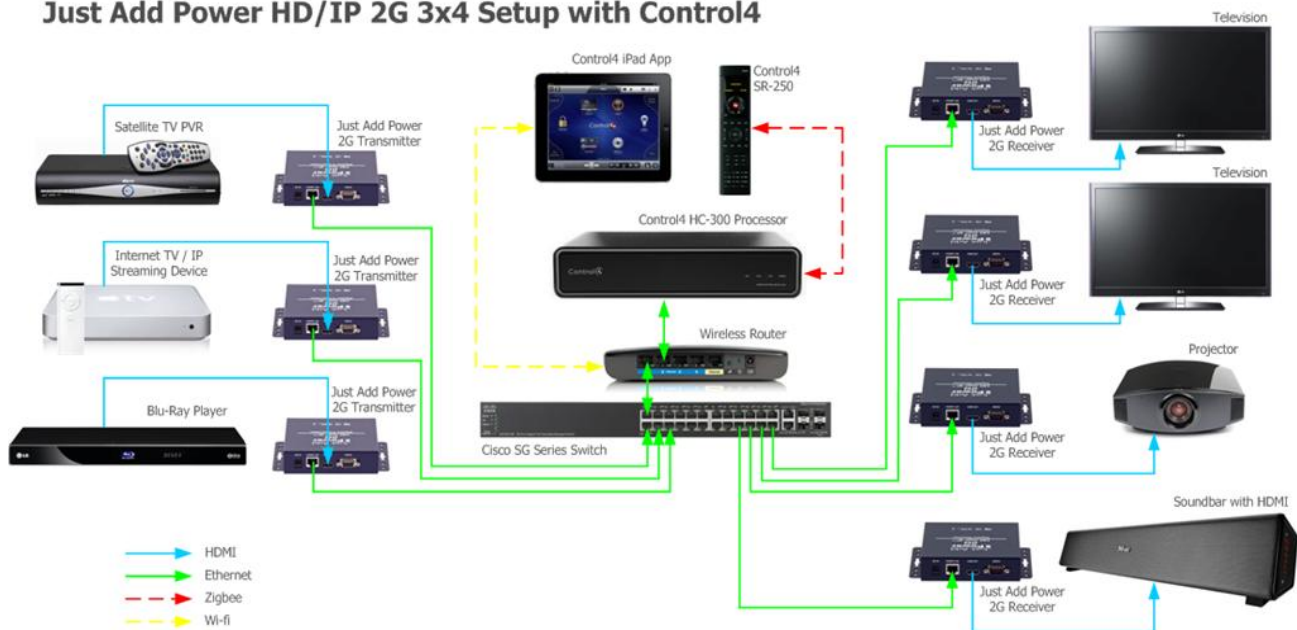
INTRODUCTION

Just Add Power High Definition over IP receivers and transmitters are a flexible way to distribute high definition video from a number of video sources to multiple video displays. The switch is used as a virtual HDMI matrix, connecting video inputs to designated outputs e.g. televisions, monitors and projectors.

This document describes how to use the Just Add Drivers Configuration Tool to configure a supported switch and all JAD devices in the system. The following switch families are supported: Cisco SG300 series, Cisco SG500 series, Netgear GSM, Pagedge 24X and Luxul AMS (as well as specific XMS models) . This document also covers the installation, configuration and operation of switching and Serial-Over-IP (SOIP) modules for the following supported control systems: AMX, Crestron, Control4 and RTI.

The illustration below shows an example system configuration incorporating an unstacked Cisco SG series switch and a Control4 control system:

Just Add Power HD/IP 2G 3x4 Setup with Control4



Patching Scheme for managed switches

All managed switches must conform to the following patching scheme where n is the number of transmitters and m is the number of receivers:

- Port 1 - control port
- Port 2 to port $n+1$ - transmitter section
- Port $n+2$ to port $n+m+1$ - receiver section
- Remaining ports - user defined or unused

Port 1 of your managed switch must be connected to your LAN. The next port section is reserved for the transmitters. The transmitter section is directly followed by the receiver section – there should be no port gaps between the transmitter and receiver sections. The remaining ports can be defined by the user or left as unused.

As an example, a managed switch with 24 ports, 7 transmitters and 7 receivers would be configured as follows :

- Port 1 - control port
- Port 2 to port 8 - transmitter section
- Port 9 to port 15 - receiver section
- Ports 16 to 24 - user defined or unused

The Just Add Drivers configuration tool is used to configure the ports according to the patching scheme described.

Layer 3 switch – Cisco SG 300, SG 500 Series, Luxul AMS/XMS

The Cisco SG series and Luxul AMS/XMS are true Layer 3 switches, meaning that we are able to configure the switch so that the JAP devices are on isolated VLANs, and yet able to communicate with the control system via interVLAN routing in the switch. The control system will be able to access all transmitters and all receivers connected to the switch. The Just Add Drivers Configuration tool section will explain how to configure the managed switch for this purpose.

These switches can also be used in conjunction with the SOIP/CLIP module to send serial over IP and console commands to devices via Just Add Power RS232 ports. The switch will be configured to have a control port on port 1, a number of transmitters and a number of receivers.

Layer 2 switches – Netgear 7000 series, Pakedown S24x

The Netgear and Pakedown switches are only Layer 2 – they do not support Layer 3 routing capabilities. They can be configured for JAP usage in the following modes:

“no receiver access” - the JAP devices will be on isolated VLANs and unable to communicate with the control system. In this mode, no control SOIP/CLIP commands can be sent.

“receiver access” - the control system will have access to receivers. The SOIP/CLIP commands can be sent to Just Add Power receivers in this mode. Note that due to the way the VLANs are configured in this mode, the receiver doesn't have direct access to the transmitter, and consequently when switching sources to a source that has mostly static content, it is possible that the video display will take a short while to fully display (needs to build up image from the data it receives, rather than requesting a complete frame from the transmitter). In practice on moving images this isn't noticeable. When set up in this mode, the control system has access to the JAP receivers for SOIP / CLIP (and without having to set up a static route on the network router).

In both modes, the switch will be configured to have a control port on port 1, a number of transmitters and a number of receivers.

NOTE: If the video source is changed and the new video content is mainly static, there may be a delay in the video monitor response. However, if the new video content is mainly dynamic, the video monitor image will be updated quickly. This effect occurs due to the video protocol used to transmit the video images. Response updates are faster for images with dynamic changes rather than static images.

JUST ADD DRIVERS CONFIGURATION TOOL

Introduction

Thank you for choosing the Just Add Drivers configuration tool to configure your Just Add Power video distribution system. This application is designed to make the initial configuration of your chosen switch and Just Add Power devices both quicker and easier.

The below illustration shows the patching scheme for a 4x4 Just Add Power system, using a 20 port switch:



The Just Add Power system works by integrating with your existing LAN (Local Area Network) to distribute video signals from centralised sources to multiple display devices. All devices on your existing LAN can communicate directly with each other; the JAP system creates separate VLANs (Virtual Local Area Networks) for each of the video transmitters and then manipulates which ports on the switch belong to which VLAN. Layer 3 switches additionally allow IP routing between VLANs (effectively acting as a router), allowing inter-VLAN communication.

In the above example, port 1 is reserved for the Control VLAN, acting as the link between your LAN and the JAP system. Ports 2-5 have been designated as transmitter ports, and ports 6-9 as receiver ports. Note that transmitter ports will always be assigned by the driver from port 2 onwards, and receiver ports will follow on from the last assigned transmitter port. The remaining ports (coloured blue in the above illustration) can be defined by the installer. A common use for the remaining ports is to define them as part of the Control VLAN, making them usable as standard LAN ports.

NOTE: It is important to remember that the numbering system on the switch ports will be different to the numbering of the JAP transmitter and receiver ports as assigned by the driver.

Configuring a System with a Single Switch

The Configuration tool can be used to configure systems employing a single switch (this is known as an “unstacked” system), multiple switches (a “stacked” system), or to perform firmware updates on JAD devices only (with no switch configuration). This section of the guide describes configuration of an unstacked system.

STEP 1: Connecting Your Switch

You must first make the necessary connections between your devices. In order to configure the switch, a serial connection is required between your PC and your switch. Many switches come with the correct cable, but you may need an adaptor if your computer is not equipped with a built-in serial port. The appropriate port on most network switches is often labelled *Console*. The serial connection is required for initial configuration only.

Next, it is essential that your computer is connected to your Local Area Network. The Just Add Drivers configuration tool uses the network settings assigned to your computer to correctly configure devices.

To complete the configuration process, it is also necessary to connect port 1 of your network switch to the network (NOTE: this must be the same network that your computer is connected to).

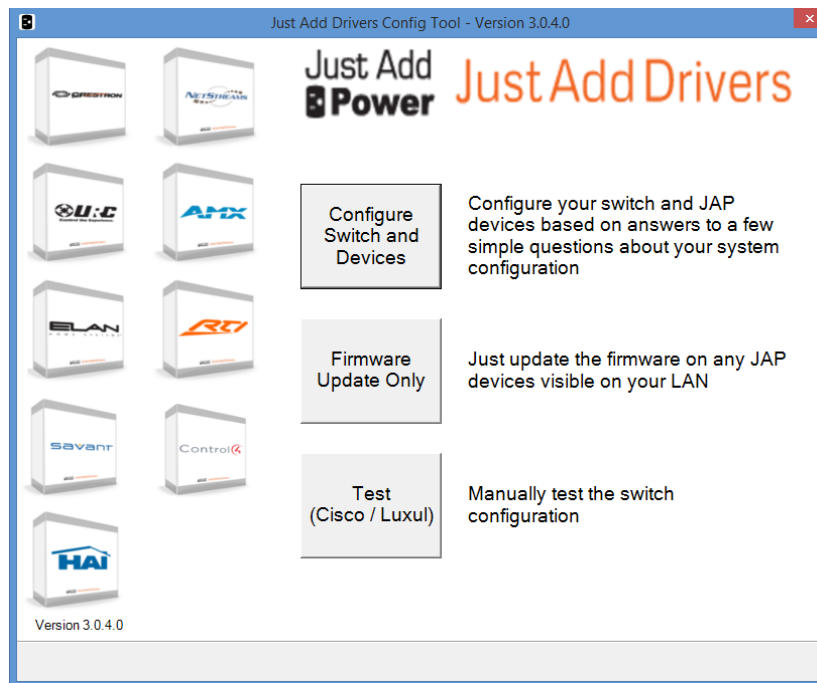
WARNINGS

1. IT IS CRITICAL THAT NO VIDEO SOURCES ARE CONNECTED TO THE TRANSMITTERS DURING CONFIGURATION.

2. IF ANY CONTROL SYSTEMS CONNECTED TO THE NETWORK HAVE THE SWITCHING MODULE INSTALLED, ENSURE THE MODULE IS DISABLED (OR THE CONTROL SYSTEM SWITCHED OFF) BEFORE RUNNING THE CONFIGURATION TOOL.

STEP 2: Choosing Your Switch

When you first run the application you will be presented with the home screen:



- Choose **Configure Switch and Devices** to proceed.

The switch selection screen is displayed:

The screenshot shows the 'Just Add Drivers Config Tool - Version 3.0.4.0' window at the switch selection screen. It contains the following text and fields:

Please connect the console on your switch to a serial port, and also connect port 1 of the switch to your network.

ENSURE THAT NO HDMI SOURCES ARE CONNECTED TO THE TRANSMITTER UNITS.

Network Interface: 172.16.112.51 (Realtek PCIe FE Family C)

COM Port: COM6 USB Serial Port

Switch Family: Cisco SG300 Series

Username: cisco

Password: cisco

At the bottom right, there is a 'Next >' button.

You will need to make some selections relating to your switch and serial connection:

Network Interface	If your PC has multiple network interfaces, select the one you want to use.
COM Port	Choose the COM port on your computer to which the serial adaptor is connected.
Switch Family	Choose the make/model range to which your chosen switch belongs.
User Name	Refer to the documentation accompanying your switch for the username required for administrative access.
Password	Refer to the documentation accompanying your switch for the password required for administrative access.
Enable Password	Refer to the documentation accompanying your switch for the enable password required for administrative access (this option only appears for Netgear switches).

- Press **Next** to continue.

STEP 3: Choosing the Configuration For Your Switch

On the next screen you must make some selections relating to your desired switch configuration:

Just Add Drivers Config Tool - Version 3.0.4.0

Please enter the following information about your system configuration.

ENSURE THE SWITCH ADDRESS SPECIFIED IS NOT ALREADY ASSIGNED TO ANOTHER DEVICE.

Transmitter Ports

Receiver Ports

Default Transmitter

Unused port mode

Switch IP Address

Default Route

☐ Advanced

InterVLAN Routing

JAP LAN

Transmitter Ports	Choose the number of switch ports to allocate for transmitters (video sources, e.g. BluRay player).
Receiver Ports	Choose the number of switch ports to allocate for receivers (video displays, e.g. Television).
Default Transmitter	Select the transmitter port to which all receivers will connect by default when the system starts.
Unused Port Mode	The unused ports on your switch are automatically assigned to the Control VLAN , making them available as standard ports on your network.
Switch IP Address	Enter the IP address to use for the switch itself. This MUST be a vacant address on your existing network that can be statically assigned.
Default Route	This field displays your network gateway and is editable only in Advanced mode.
InterVLAN Routing	This is enabled by default and un-editable.
JAP LAN	Choose an IP range from the list to use for your JAP devices. Only compatible ranges will be displayed.

NOTE: The application will automatically populate the **Switch IP Address** with an appropriate (and currently vacant) address. If you are unsure about the configuration of your LAN, use this default address.

Advanced Configuration

Advanced configuration is only recommended for users familiar with the configuration of VLANs. Click the **Advanced** checkbox and a number of new options appear, or become editable:

Just Add Drivers Config Tool - Version 3.0.4.0

Please enter the following information about your system configuration.

ENSURE THE SWITCH ADDRESS SPECIFIED IS NOT ALREADY ASSIGNED TO ANOTHER DEVICE.

Transmitter Ports: 10

Receiver Ports: 10

Default Transmitter: 1

Unused port mode: Control VLAN

Switch IP Address: 172.16.112.99 Netmask: 255.255.0.0

Default Route: 172.16.0.1

☒ Advanced

InterVLAN Routing: Enabled

JAP LAN: Class A (10.x.x.x)

10.0.0.0 Netmask: 255.0.0.0

Management IP Address: 192.168.98.2 Netmask: 255.255.255.0

Next >

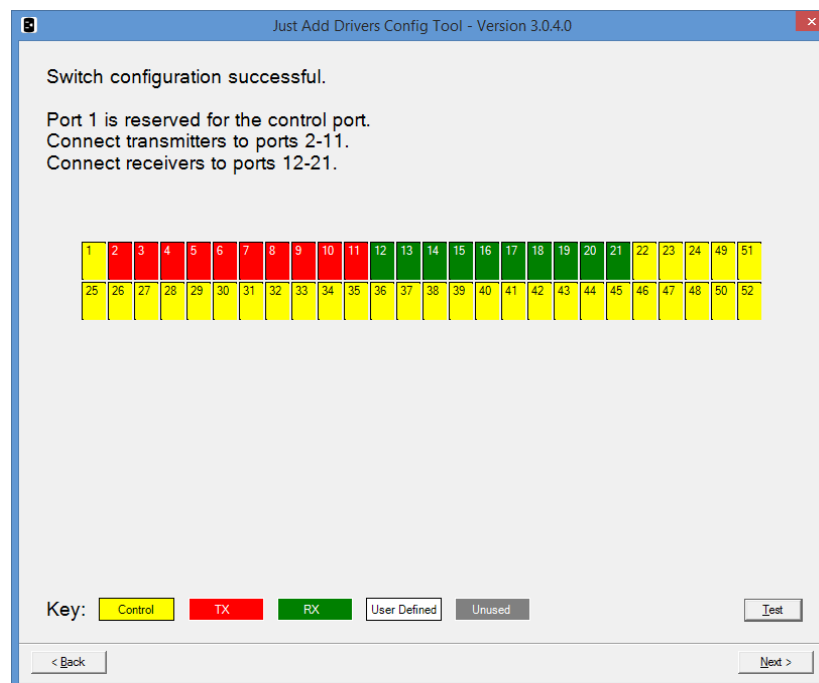
Unused Port Mode	If you wish to manually configure the unused ports on your switch choose User Defined , otherwise choose Control VLAN .
Switch Netmask	Define the netmask for the switch.
Default Route	Edit this option to define your own network gateway.
InterVLAN Routing	This is enabled by default and un-editable.
JAP LAN Address / Netmask	If you prefer not to use one of the default LANs, enter your own JAP LAN address and netmask.
Management IP Address / Netmask	This is the address of VLAN 1 and is not used by the JAP system, but does require configuration. Only change this address if it conflicts with an address on your LAN.

- When all configuration options are set, press **Next** to proceed and the application will display a screen detailing your chosen configuration.
- Press **Next** to continue, or **Back** to change the configuration.

The application will perform the switch configuration process, which may take several minutes.

STEP 4: Configuring and Connecting Your Just Add Power Devices

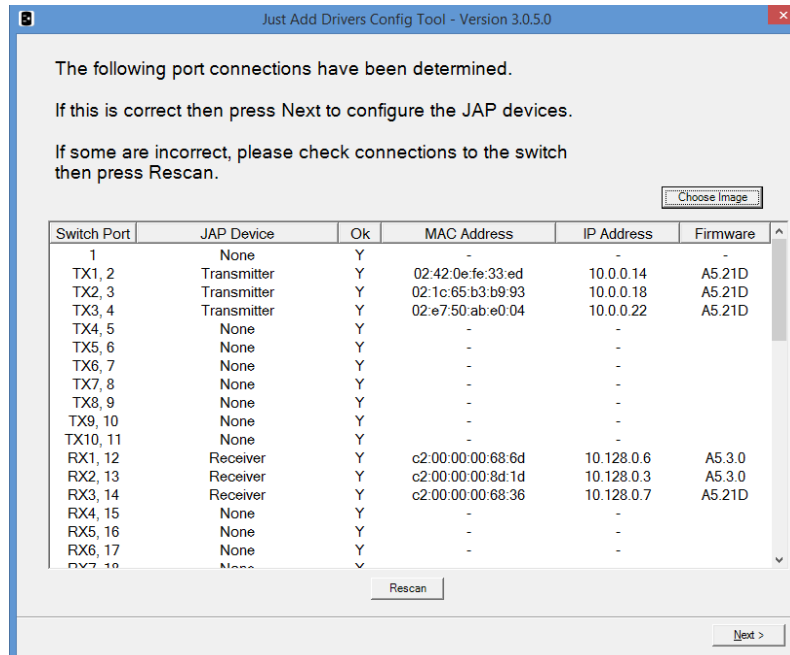
The next screen displays an image illustrating how the ports on your switch are configured:



Note the **Test** button. This can be used to access a Test harness allowing you to test the switching functionality of your system. Refer to the section of this guide titled *Testing your System* for more information.

- Connect your JAP devices accordingly and then press **Next** to proceed.

The configuration tool will now attempt to discover your JAP devices. The next screen reports information about your JAP devices, including how they are connected and the firmware revisions they are currently running:

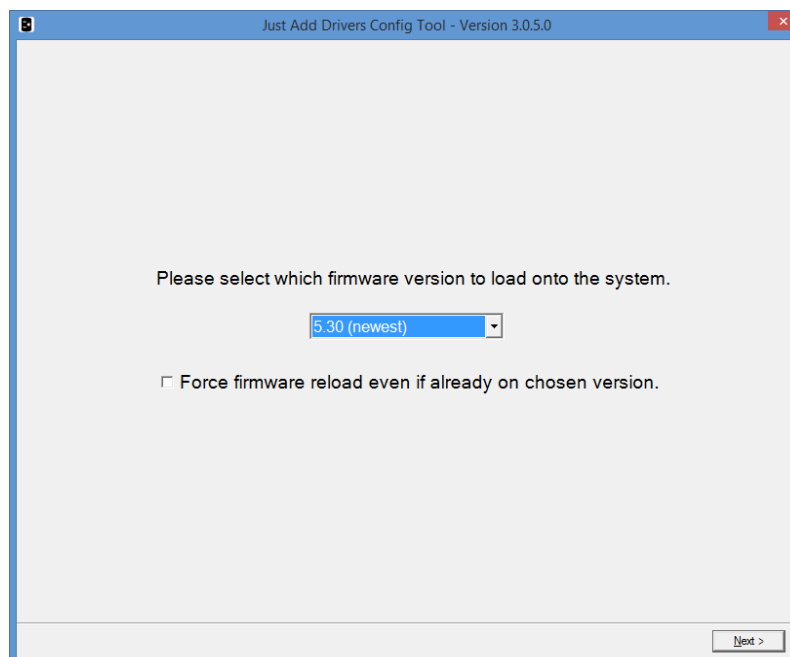


If some of your devices do not appear in the list of discovered devices, check the connections and press **Rescan**. In the event of errors, correct the patching as instructed. If you see a question mark displayed in the **Firmware** field, this may be due to duplicate IP addresses on two or more JAP devices. In this scenario, proceed with the configuration as the tool will resolve any such conflicts.

The **Choose Image** button will open a browse window allowing you to choose an image file to be displayed as a background image by the receivers when no signal is present (only supported on JustAddPower devices with firmware revision 5.13d or later).

- Click **Next** to continue.

The next screen allows you to upload new firmware to your JAP devices:

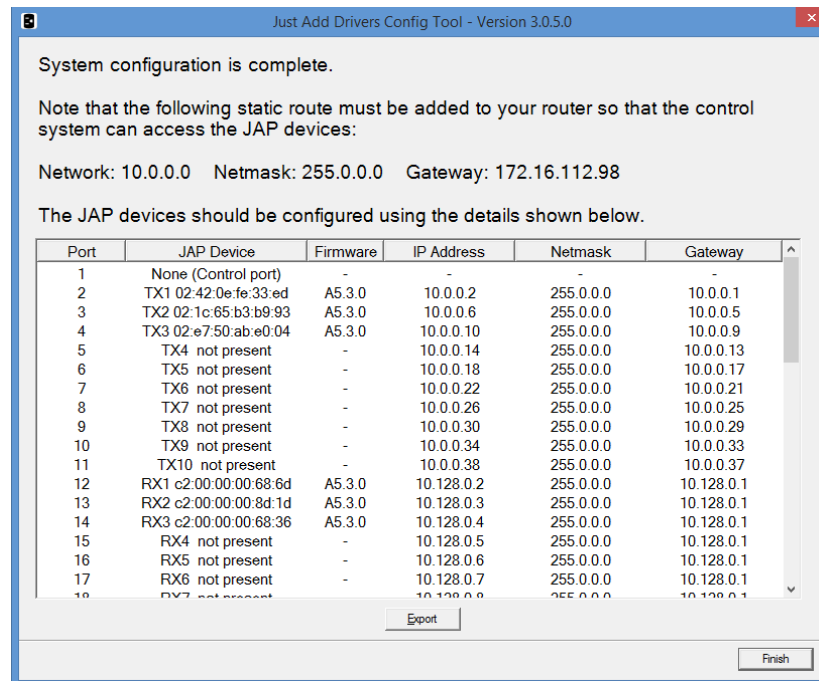


If you prefer to keep the currently installed version, choose "Don't Update Firmware" (note that this option won't appear if your connected JAP devices have mismatched firmware versions). If you want to re-install the same firmware version currently installed, check the box labelled "Force firmware reload even if already on chosen version".

- Click **Next** to configure the devices.

The application will now configure the devices and update firmware according to the selections you have made. This process may take some time, depending on the number of devices. When this process is complete, the switch will reboot.

The final screen of the application confirms the success of the configuration process:



In addition, it also details the information required to set up the "static route" (consisting of a **Network** address, **Netmask** and **Gateway**). Be sure to note these down. A text file detailing the configuration is automatically saved in the installation directory (for example, *C:\Program Files (x86)\Just Add Power\JADConfig\Reports*) or can be generated by clicking **Export**.

- Click **Finish** to exit the wizard.

NOTE: The final stage requires you to add a Static Route into your router's configuration. Refer to the section in this guide entitled *Adding a Static Route to Your Router* for more information.

Configuring a System with Multiple Cisco Switches

The JustAddDrivers configuration tool can also be used for configuration of larger systems, containing multiple switches in a “Stack” arrangement. Currently, the only Cisco switch family that supports stacking is the Cisco SG500 Series. This section of the guide describes the process for configuring a stacked system.

STEP 1: Connecting Your Master Switch

You must first make the necessary connections between your devices. In a Cisco stack configuration, the first switch to be configured is known as the *Master*; all subsequent switches are referred to as *Slaves*. In order to configure the master switch, a serial connection is required between your PC and the switch. Many switches come with the correct cable, but you may need an adaptor if your computer is not equipped with a built-in serial port. The appropriate port on most network switches is often labelled *Console*. The serial connection is required for initial configuration only.

Next, it is essential that your computer is connected to your Local Area Network. The Just Add Drivers configuration tool uses the network settings assigned to your computer to correctly configure devices.

To complete the configuration process, it is also necessary to connect port 1 of your master switch to the network (NOTE: this must be the same network that your computer is connected to).

No connections are required to the slave switch(es) as this stage.

WARNINGS

- 1. IT IS CRITICAL THAT NO VIDEO SOURCES ARE CONNECTED TO THE TRANSMITTERS DURING CONFIGURATION.**
- 2. IF ANY CONTROL SYSTEMS CONNECTED TO THE NETWORK HAVE THE SWITCHING MODULE INSTALLED, ENSURE THE MODULE IS DISABLED (OR THE CONTROL SYSTEM SWITCHED OFF) BEFORE RUNNING THE CONFIGURATION TOOL.**

STEP 2: Choosing Your Switch

When you first run the application you will be presented with the home screen, followed by the Switch Selection page:

Just Add Drivers Config Tool - Version 3.0.5.0

Please connect the console on your switch to a serial port, and also connect port 1 of the switch to your network.

ENSURE THAT NO HDMI SOURCES ARE CONNECTED TO THE TRANSMITTER UNITS.

Network Interface: 172.16.112.51 (Realtek PCIe FE Family C)

COM Port: COM6 USB Serial Port

Switch Family: Cisco SG500 Series (Stacked)

Username: cisco

Password: cisco

Next >

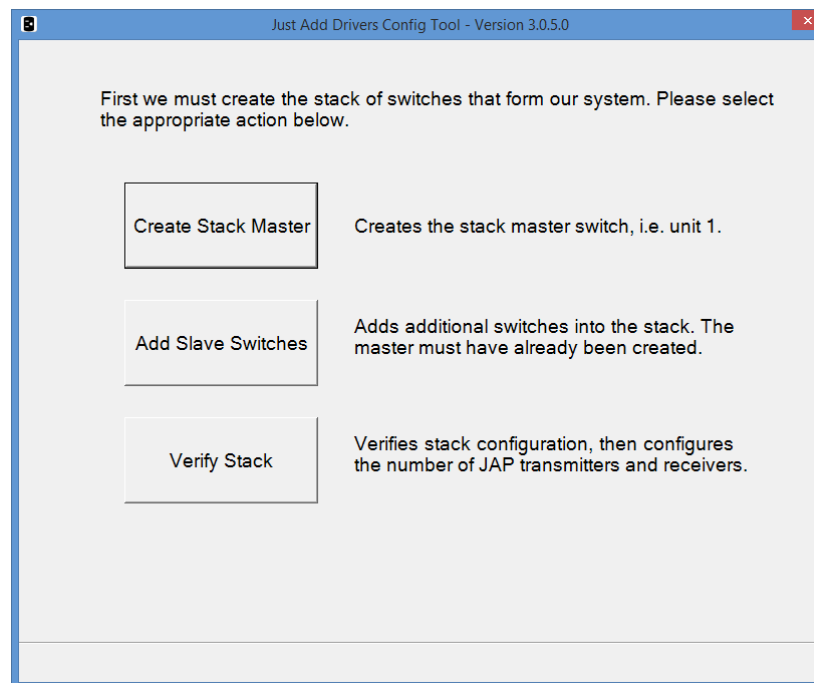
You will need to make some selections relating to your switch and serial connection:

Network Interface	If your PC has multiple network interfaces, select the one you want to use.
COM Port	Choose the COM port on your computer to which the serial adaptor is connected.
Switch Family	Choose <i>Cisco SG500 Series (Stacked)</i> .
User Name	Enter the username required for administrative access (by default, this is "cisco").
Password	Enter the password required for administrative access (by default, this is "cisco").

- Press **Next** to continue.

STEP 3: Configuring the Stack

The Stack Configuration screen offers three options:



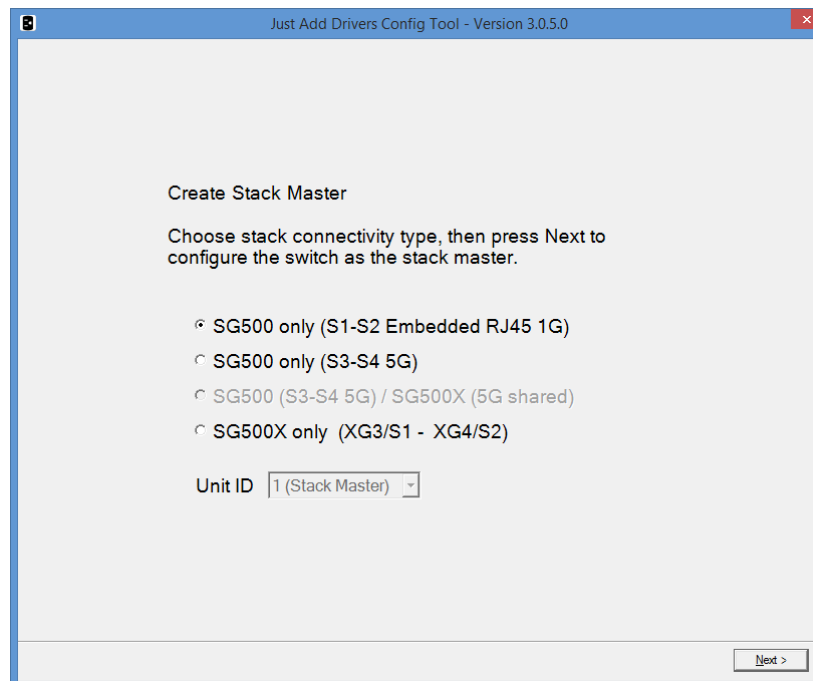
STEP 3a: Creating the Stack Master

- Choose **Create Stack Master**.

The following screen instructs you to connect your PC's serial port to the master switch.

- Click **Next** to continue.

Next, you must choose the stack connectivity type:



Choose the appropriate option depending on your Cisco switch model type and connection port.

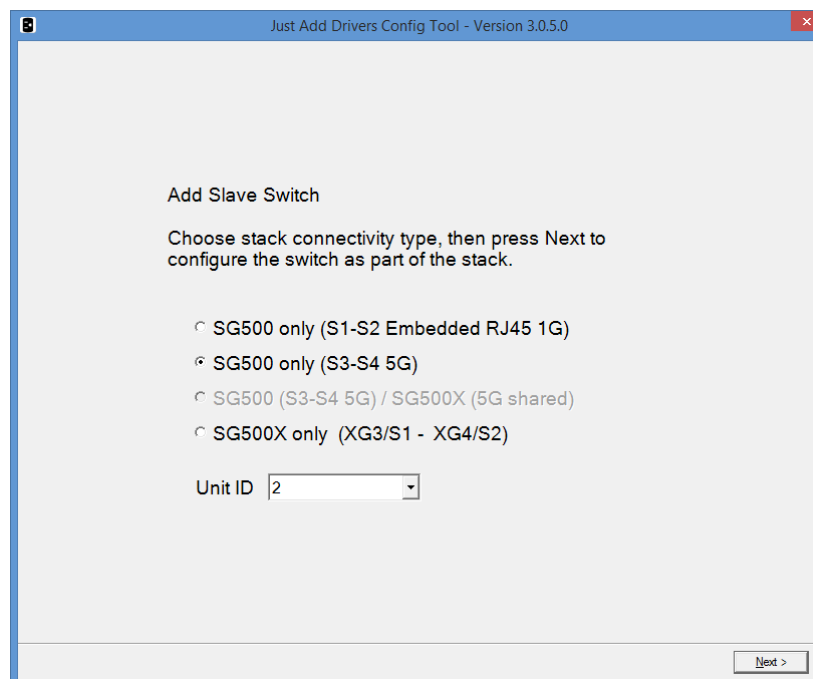
- Click **Next** to continue.

The next screen should confirm successful configuration of the stack master. If, for any reason, it has not been possible to configure the stack master, follow the instructions on the screen to re-attempt.

STEP 3b: Adding Slave Switches

- From the Stack Configuration screen, Choose **Add Slave Switches**.

The following screen instructs you to connect your PC's serial port to the switch that is to become a slave. Ensure the new switch is not connected to the master switch, or to the network, and press **Next** to continue.



Choose the appropriate option depending on your Cisco switch model type and connection port. Next, select a **Unit ID** for the Slave switch.

Note: each slave switch you add must have a unique Unit ID. Up to 8 switches can be configured in total (1 x master + 7 x slaves).

The next screen should confirm successful configuration of the slave switch. Follow the instructions on the screen and connect the switches together via their stacking ports. If you are using an SG500 model, the stacking ports are labelled **S3** and **S4**; use either port. If you are using the SG500X model, these are labelled **XG1** and **XG2**; again, either stacking port can be used.

If, for any reason, it has not been possible to configure the slave switch, follow the instructions on the screen to re-attempt.

- Press **Next** to return to the Stack Configuration screen.
- Choose **Add Slave Switches** again to repeat the above process and add more slave switches to the stack.

STEP 3c: Choosing the Configuration for the Stack

- From the Stack Configuration screen, Choose **Verify Stack**.

You can use the **Verify Stack** option to simply confirm the current configuration of the stack, to configure a new stack, or to re-configure an existing stack. The following screen instructs you to connect your PC's serial port to the master switch and to ensure that all configured slaves are connected via their stacking ports.

- Press **Next** to continue to a screen detailing the current stack configuration.
- If the stack configuration information is correct, press **Next**, otherwise press **Back** and wait 3 minutes before re-selecting the **Verify Stack** option.

On the next screen, you must make some selections depending upon the configuration of your JustAddPower system:

Just Add Drivers Config Tool - Version 3.0.5.0

Please enter the following information about your system configuration.

ENSURE THE SWITCH ADDRESS SPECIFIED IS NOT ALREADY ASSIGNED TO ANOTHER DEVICE.

Stack Unit	1	2	3	4	5	6	7	8
Trunk Bandwidth Estimation	5	5	0	0	0	0	0	0
Sufficient capacity for 1080p/60 content	5	5	0	0	0	0	0	0
Transmitter Ports	5	5	0	0	0	0	0	0
Receiver Ports	5	5	0	0	0	0	0	0
Default Transmitter	1							
Unused port mode	User defined							
Switch IP Address	172.16.112.98							
Default Route	172.16.0.1							
InterVLAN Routing	Enabled							
JAP LAN	Class A (10.x.x.x)							

☐ Advanced

Next >

Transmitter Ports	Choose the number of switch ports to allocate for transmitters (video sources, e.g. BluRay player) on each stack unit.
Receiver Ports	Choose the number of switch ports to allocate for receivers (video displays, e.g. Television) on each stack unit.
Default Transmitter	Select the transmitter port to which all receivers will connect by default when the system starts.
Unused Port Mode	The unused ports on your switches are automatically assigned to the Control VLAN , making them available as standard ports on your network.
Switch IP Address	Enter the IP address to use for the master switch. This MUST be a vacant address on your existing network that can be statically assigned.
Default Route	This field displays your network gateway and is editable only in Advanced mode.
InterVLAN Routing	This is enabled by default and un-editable.
JAP LAN	Choose an IP range from the list to use for your JAP devices. Only compatible ranges will be displayed.

NOTE: The application will automatically populate the **Switch IP Address** with an appropriate (and currently vacant) address. If you are unsure about the configuration of your LAN, use this default address.

Advanced Configuration

Advanced configuration is only recommended for users familiar with the configuration of VLANs. Click the **Advanced** checkbox and a number of new options appear, or become editable:

Just Add Drivers Config Tool - Version 3.0.5.0

Please enter the following information about your system configuration.
ENSURE THE SWITCH ADDRESS SPECIFIED IS NOT ALREADY ASSIGNED TO ANOTHER DEVICE.

Stack Unit 1 2 3 4 5 6 7 8

Trunk Bandwidth Estimation
Sufficient capacity for 1080p/60 content

Transmitter Ports 5 5 0 0 0 0 0 0

Receiver Ports 5 5 0 0 0 0 0 0

Default Transmitter 1

Unused port mode User defined

Switch IP Address 172.16.112.98 Netmask 255.255.0.0

Default Route 172.16.0.1

☒ Advanced

InterVLAN Routing Enabled

JAP LAN Class A (10.x.x.x)

10.0.0.0 Netmask 255.0.0.0

Management IP Address 192.168.98.2 Netmask 255.255.255.0

Next >

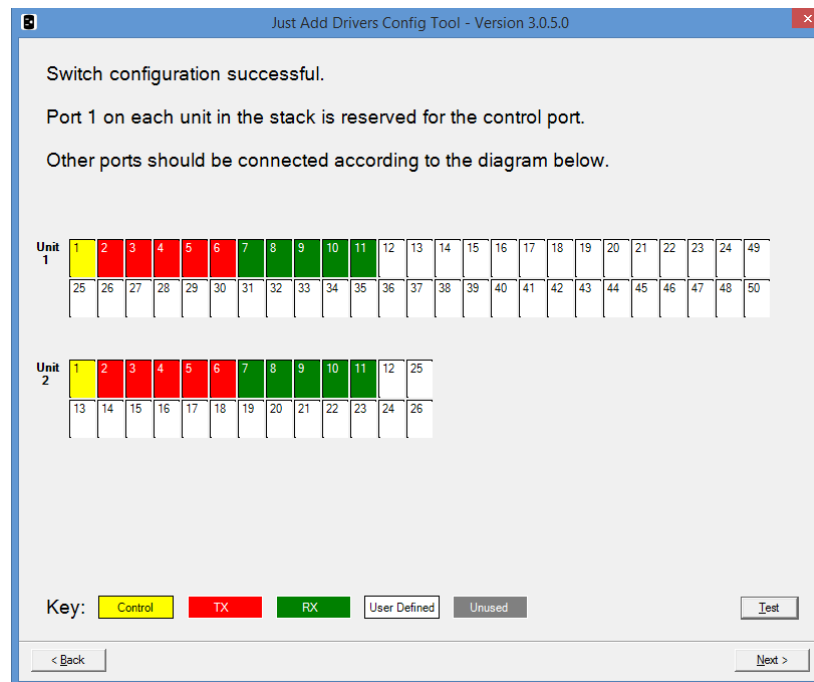
Unused Port Mode	If you wish to manually configure the unused ports on your switch choose User Defined , otherwise choose Control VLAN .
Switch Netmask	Define the netmask for the master switch.
Default Route	Edit this option to define your own network gateway.
InterVLAN Routing	This is enabled by default and un-editable.
JAP LAN Address / Netmask	If you prefer not to use one of the default LANs, enter your own JAP LAN address and netmask.
Management IP Address / Netmask	This is the address of VLAN 1 and is not used by the JAP system, but does require configuration. Only change this address if it conflicts with an address on your LAN.

- When all configuration options are set, press **Next** to proceed and the application will display a screen detailing your chosen configuration.
- Press **Next** to continue, or **Back** to change the configuration.

The application will perform the switch configuration process, which may take several minutes.

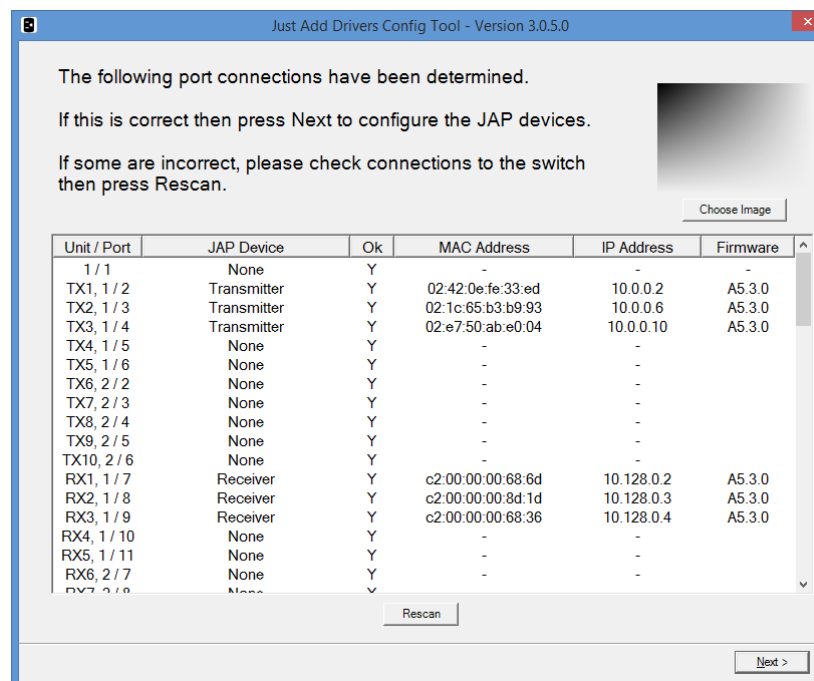
STEP 4: Configuring and Connecting Your Just Add Power Devices

The next screen displays an image illustrating how the ports on your switches are configured:



- Connect your JAP devices accordingly and press **Next** to proceed.

The configuration tool will now attempt to discover your JAP devices. The next screen reports information about your JAP devices, including how they are connected and the firmware revisions they are currently running:



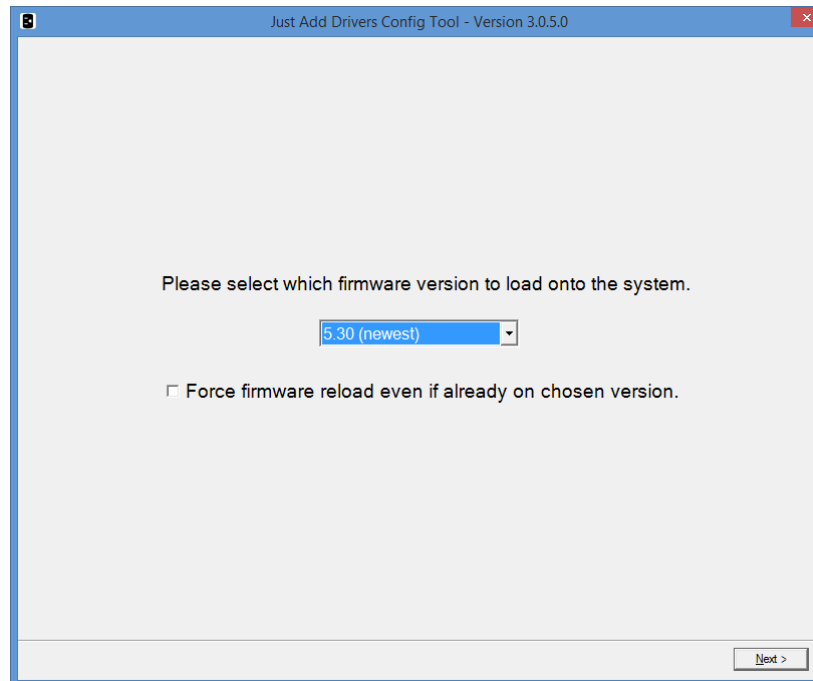
If some of your devices do not appear in the list of discovered devices, check the connections and press **Rescan**. In the event of errors, correct the patching as instructed. If you see a question mark displayed in the **Firmware** field, this may be due to duplicate IP addresses on two or more JAP devices. In this scenario,

proceed with the configuration as the tool will resolve any such conflicts.

The **Choose Image** button will open a browse window allowing you to choose an image file to be displayed as a background image by the receivers when no signal is present (only supported on JustAddPower devices with firmware revision 5.13d or later).

- Click **Next** to continue.

The next screen allows you to upload new firmware to your JAP devices:

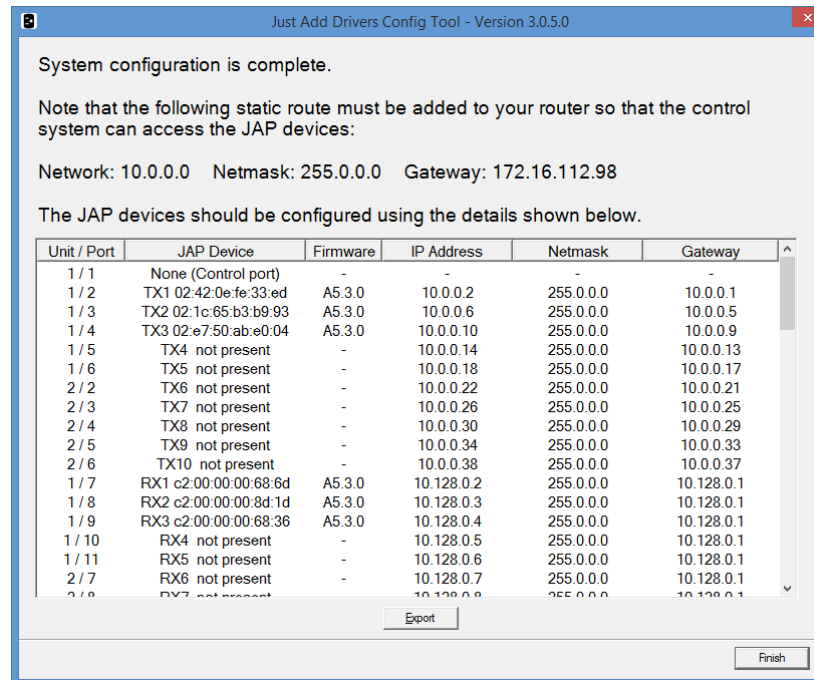


If you prefer to keep the currently installed version, choose "Don't Update Firmware" (note that this option won't appear if your connected JAP devices have mismatched firmware versions). If you want to re-install the same firmware version currently installed, check the box labelled "Force firmware reload even if already on chosen version".

- Click **Next** to configure the devices.

The application will now configure the devices and update firmware according to the selections you have made. This process may take some time, depending on the number of devices. When this process is complete, the switch will reboot.

The final screen of the application confirms the success of the configuration process:



In addition, it also details the information required to set up the "static route" (consisting of a **Network** address, **Netmask** and **Gateway**). Be sure to note these down. A text file detailing the configuration is automatically saved in the installation directory (for example, *C:\Program Files (x86)\Just Add Power\JADConfig\Reports*) or can be generated by clicking **Export**.

- Click **Finish** to exit the wizard.

NOTE: The final stage requires you to add a Static Route into your router's configuration. Refer to the section in this guide entitled *Adding a Static Route to Your Router* for more information.

Configuring a System with Multiple Luxul Switches

The JustAddDrivers configuration tool can also be used for configuration of larger systems, containing multiple switches in a "Stack" arrangement. Currently, the only Luxul switch model that supports stacking is the AMS-4424P. This section of the guide describes the process for configuring a stacked system.

STEP 1: Connecting Your Master Switch

You must first make the necessary connections between your devices. In a Luxul stack configuration, the first switch to be configured is known as the *Master*; all subsequent switches are referred to as *Slaves*. In order to configure the master switch, a serial connection is required between your PC and the switch. Many switches come with the correct cable, but you may need an adaptor if your computer is not equipped with a built-in serial port. The appropriate port on most network switches is often labelled *Console*. The serial connection is required for initial configuration only.

Next, it is essential that your computer is connected to your Local Area Network. The Just Add Drivers configuration tool uses the network settings assigned to your computer to correctly configure devices.

To complete the configuration process, it is also necessary to connect port 1 of your master switch to the network (NOTE: this must be the same network that your computer is connected to).

No connections are required to the slave switch(es) as this stage.

WARNINGS

1. IT IS CRITICAL THAT NO VIDEO SOURCES ARE CONNECTED TO THE TRANSMITTERS DURING CONFIGURATION.

2. IF ANY CONTROL SYSTEMS CONNECTED TO THE NETWORK HAVE THE SWITCHING MODULE INSTALLED, ENSURE THE MODULE IS DISABLED (OR THE CONTROL SYSTEM SWITCHED OFF) BEFORE RUNNING THE CONFIGURATION TOOL.

STEP 2: Choosing Your Switch

When you first run the application you will be presented with the home screen, followed by the Switch Selection page:

Just Add Drivers Config Tool - Version 3.1.0.0

Please connect the console on your switch to a serial port, and also connect port 1 of the switch to your network.

ENSURE THAT NO HDMI SOURCES ARE CONNECTED TO THE TRANSMITTER UNITS.

Network Interface: 172.16.112.147 (Realtek PCIe FE Family)

COM Port: COM6 USB Serial Port

Switch Family: Luxul AMS4424P (Stacked)

Username: admin

Password: admin

Next >

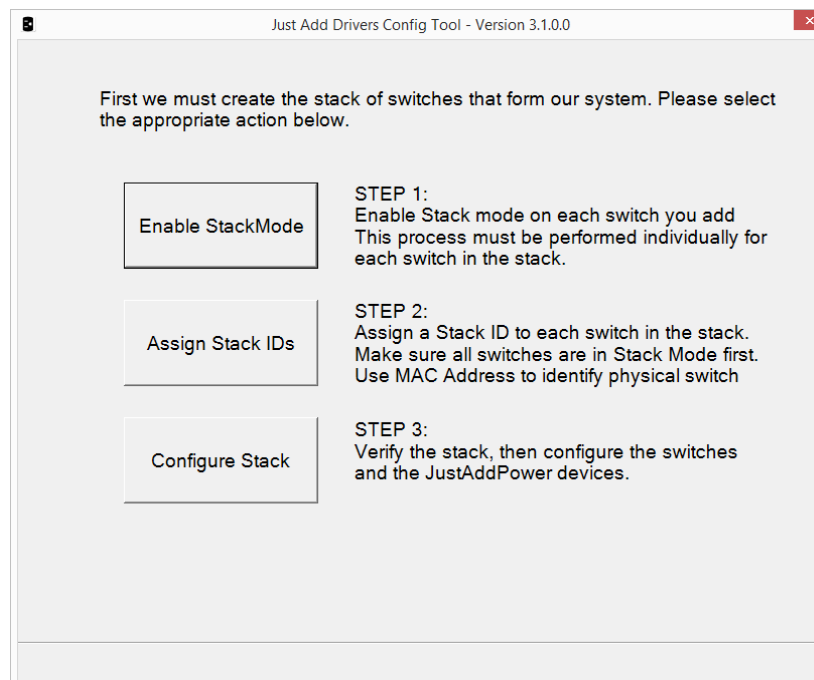
You will need to make some selections relating to your switch and serial connection:

Network Interface	If your PC has multiple network interfaces, select the one you want to use.
COM Port	Choose the COM port on your computer to which the serial adaptor is connected.
Switch Family	Choose <i>Luxul AMS4424P (Stacked)</i> .
User Name	Enter the username required for administrative access (by default, this is "admin").
Password	Enter the password required for administrative access (by default, this is "admin").

- Press **Next** to continue.

STEP 3: Configuring the Stack

The Stack Configuration screen offers three options:



STEP 3a: Enabling Stack Mode

- Choose **Enable Stack Mode**.

The following screen instructs you to connect your PC's serial port to the switch to be placed into Stack Mode. At this stage, make sure the switches are not connected together via their stacking connectors.

- Click **Next** to continue.

The following screen will confirm that the connected switch is now in Stack Mode.

- Click **Next** again to return to the Stack Configuration screen.

This process must be repeated for each switch that will form the stack.

STEP 3b: Assigning Stack IDs

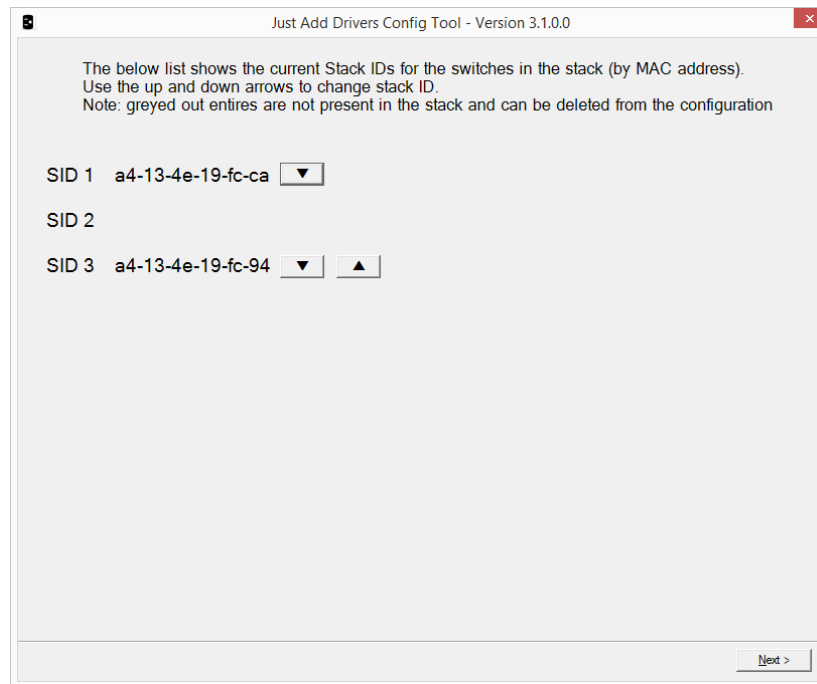
Stack IDs are used to identify switches within the stack.

- From the Stack Configuration screen, Choose **Assign Stack IDs**.

The following screen instructs you to connect your PC's serial port to the stack master switch, as well as connecting all switches together via their stacking connectors.

- Press **Next** to continue.

The Stack ID Assignment screen is displayed:



This screen identifies switches in the stack by MAC address. Use the **Up** and **Down** arrow buttons to change the Stack IDs of the switches in the stack. If a switch is no longer connected to the stack, its entry in the list will appear greyed out. Either reconnect it, or click on the **Delete** button to remove it from the configuration.

STEP 3c: Choosing the Configuration for the Stack

- From the Stack Configuration screen, Choose **Configure Stack**.

You can use the **Configure Stack** option to simply verify the current configuration of the stack, to configure a new stack, or to re-configure an existing stack. The following screen instructs you to connect your PC's serial port to the master switch and to ensure that all configured slaves are connected via their stacking ports.

- Press **Next** to continue to a screen detailing the current stack configuration.
- If the stack configuration information is correct, press **Next**, otherwise press **Back** and wait 3 minutes before re-selecting the **Verify Stack** option.

On the next screen, you must make some selections depending upon the configuration of your JustAddPower system:

Just Add Drivers Config Tool - Version 3.1.0.0

Please enter the following information about your system configuration.

ENSURE THE SWITCH ADDRESS SPECIFIED IS NOT ALREADY ASSIGNED TO ANOTHER DEVICE. ☐ Force Config

Stack Unit 1 2 3 4 5 6 7 8

Trunk Bandwidth Estimation
Sufficient capacity for 1080p/60 content

Transmitter Ports 23 0 0 0 0 0 0 0

Receiver Ports 0 0 23 0 0 0 0 0

Default Transmitter 1

Unused port mode Control VLAN

Switch IP Address 172.16.112.100

Default Route 172.16.0.1

☐ Advanced

InterVLAN Routing Enabled

JAP LAN Class A (10.x.x.x)

Next >

Transmitter Ports	Choose the number of switch ports to allocate for transmitters (video sources, e.g. BluRay player) on each stack unit.
Receiver Ports	Choose the number of switch ports to allocate for receivers (video displays, e.g. Television) on each stack unit.
Default Transmitter	Select the transmitter port to which all receivers will connect by default when the system starts.
Unused Port Mode	The unused ports on your switches are automatically assigned to the Control VLAN , making them available as standard ports on your network.
Switch IP Address	Enter the IP address to use for the master switch. This MUST be a vacant address on your existing network that can be statically assigned.
Default Route	This field displays your network gateway and is editable only in Advanced mode.
InterVLAN Routing	This is enabled by default and un-editable.
JAP LAN	Choose an IP range from the list to use for your JAP devices. Only compatible ranges will be displayed.

NOTE: The application will automatically populate the **Switch IP Address** with an appropriate (and currently vacant) address. If you are unsure about the configuration of your LAN, use this default address.

Advanced Configuration

Advanced configuration is only recommended for users familiar with the configuration of VLANs. Click the **Advanced** checkbox and a number of new options appear, or become editable:

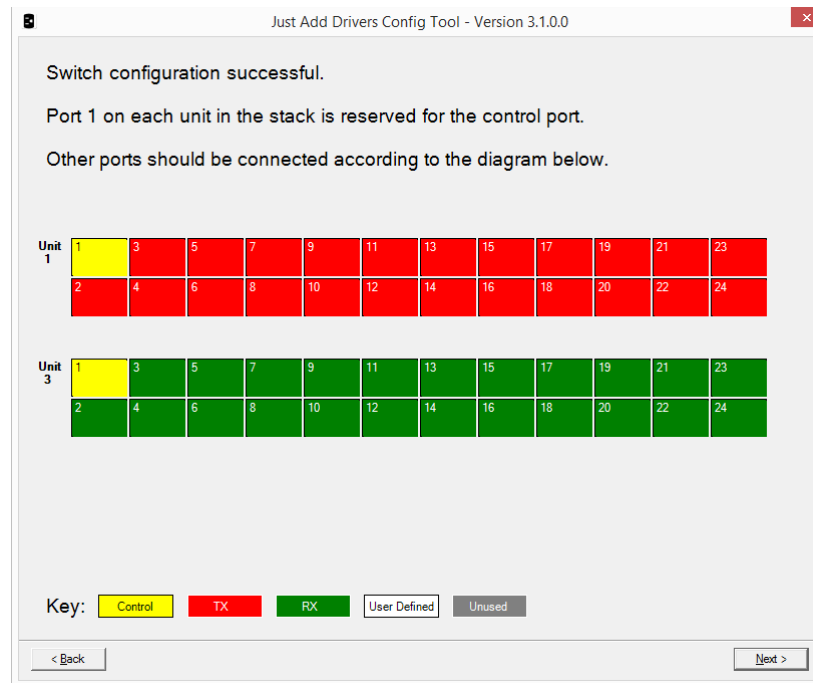
Unused Port Mode	If you wish to manually configure the unused ports on your switch choose User Defined , otherwise choose Control VLAN .
Switch Netmask	Define the netmask for the master switch.
Default Route	Edit this option to define your own network gateway.
InterVLAN Routing	This is enabled by default and un-editable.
JAP LAN Address / Netmask	If you prefer not to use one of the default LANs, enter your own JAP LAN address and netmask.
Management IP Address / Netmask	This is the address of VLAN 1 and is not used by the JAP system, but does require configuration. Only change this address if it conflicts with an address on your LAN.

- When all configuration options are set, press **Next** to proceed and the application will display a screen detailing your chosen configuration.
- Press **Next** to continue, or **Back** to change the configuration.

The application will perform the switch configuration process, which may take several minutes.

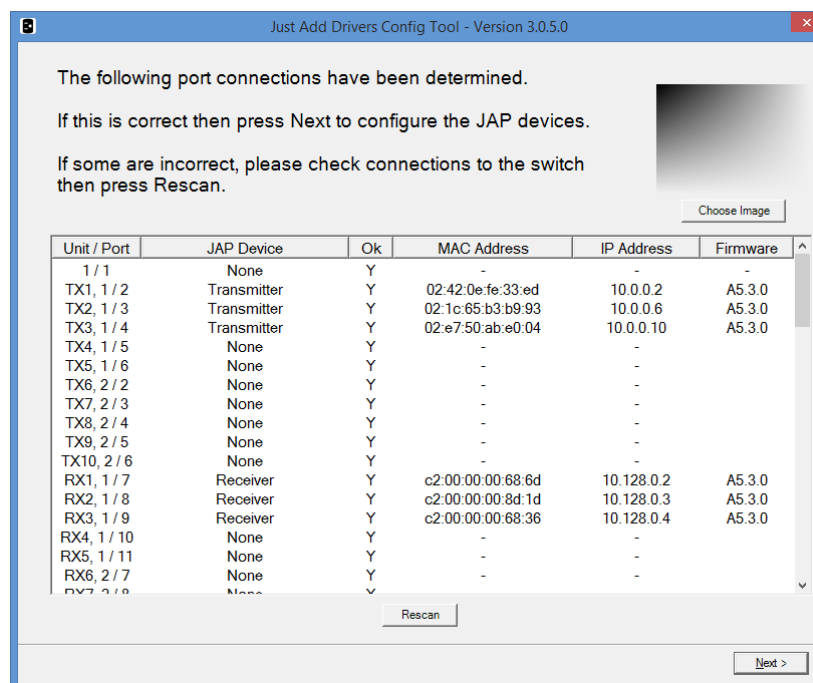
STEP 4: Configuring and Connecting Your Just Add Power Devices

The next screen displays an image illustrating how the ports on your switches are configured:



- Connect your JAP devices accordingly and press **Next** to proceed.

The configuration tool will now attempt to discover your JAP devices. The next screen reports information about your JAP devices, including how they are connected and the firmware revisions they are currently running:

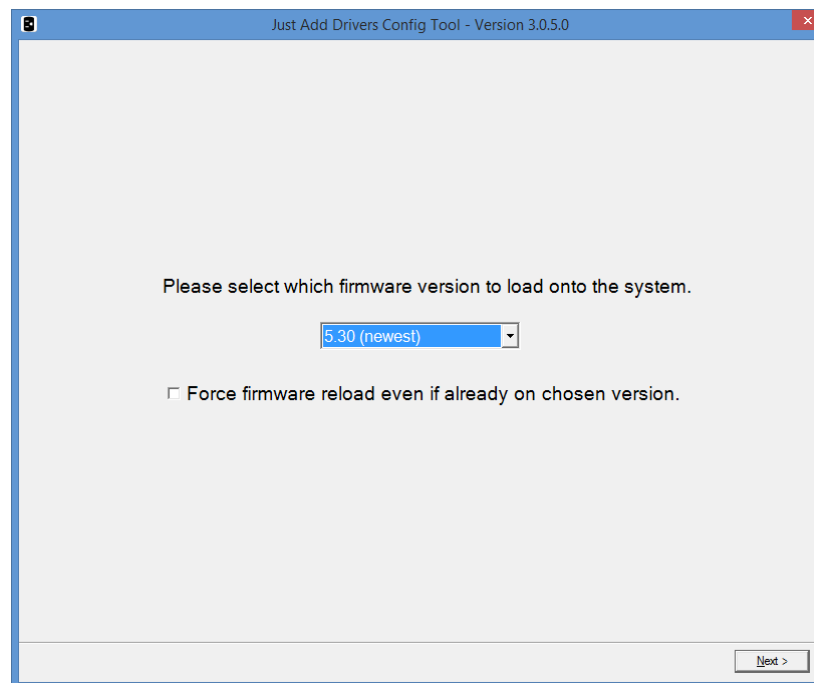


If some of your devices do not appear in the list of discovered devices, check the connections and press **Rescan**. In the event of errors, correct the patching as instructed. If you see a question mark displayed in the **Firmware** field, this may be due to duplicate IP addresses on two or more JAP devices. In this scenario, proceed with the configuration as the tool will resolve any such conflicts.

The **Choose Image** button will open a browse window allowing you to choose an image file to be displayed as a background image by the receivers when no signal is present (only supported on JustAddPower devices with firmware revision 5.13d or later).

- Click **Next** to continue.

The next screen allows you to upload new firmware to your JAP devices:

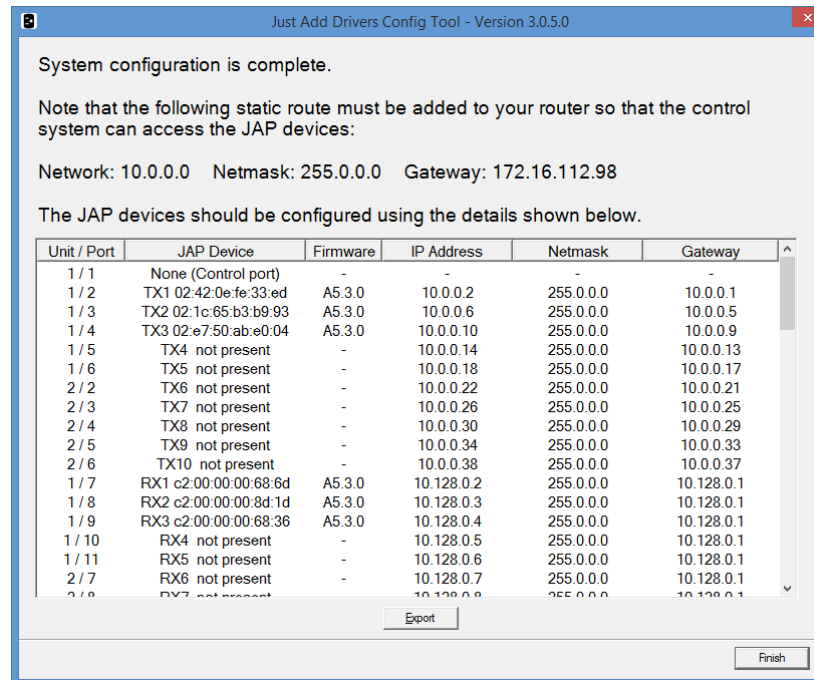


If you prefer to keep the currently installed version, choose "Don't Update Firmware" (note that this option won't appear if your connected JAP devices have mismatched firmware versions). If you want to re-install the same firmware version currently installed, check the box labelled "Force firmware reload even if already on chosen version".

- Click **Next** to configure the devices.

The application will now configure the devices and update firmware according to the selections you have made. This process may take some time, depending on the number of devices. When this process is complete, the switch will reboot.

The final screen of the application confirms the success of the configuration process:



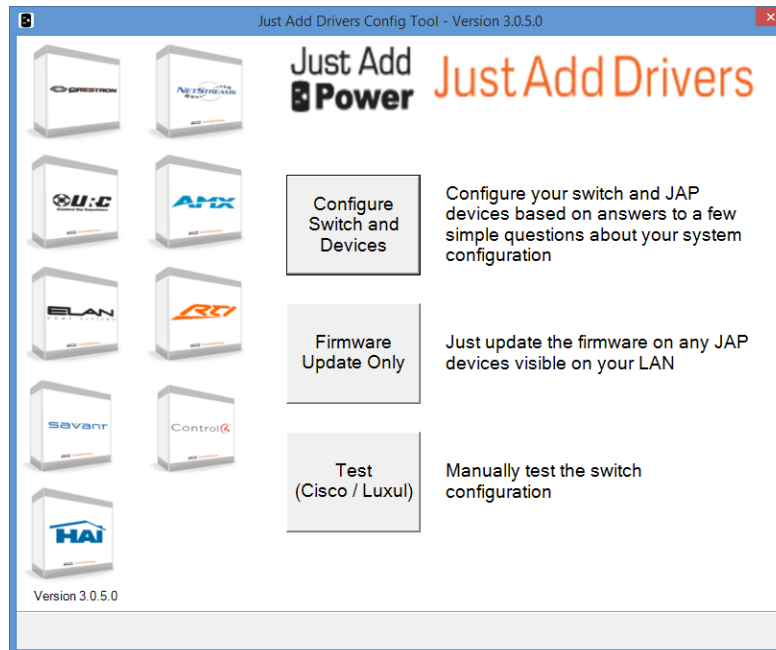
In addition, it also details the information required to set up the "static route" (consisting of a **Network** address, **Netmask** and **Gateway**). Be sure to note these down. A text file detailing the configuration is automatically saved in the installation directory (for example, *C:\Program Files (x86)\Just Add Power\JADConfig\Reports*) or can be generated by clicking **Export**.

- Click **Finish** to exit the wizard.

NOTE: The final stage requires you to add a Static Route into your router's configuration. Refer to the section in this guide entitled *Adding a Static Route to Your Router* for more information.

Testing Your System

The Configuration tool has a built in test application that can be used to test the switching capability of a newly configured system, using either a Cisco or a Luxul switch. The test screen is accessible during the configuration process, or via a button on the home screen:

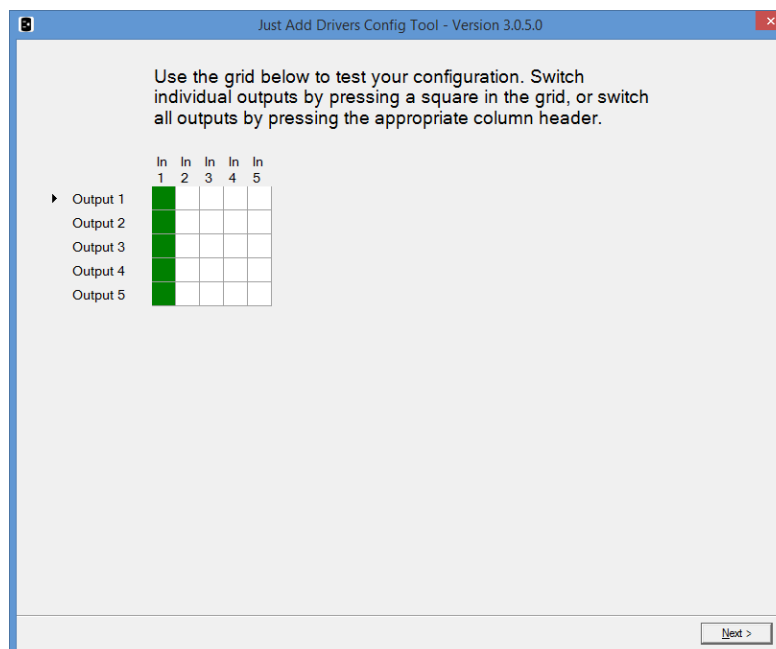


- Choose **Test (Cisco / Luxul)**.

JAD Config will attempt to discover Cisco switches on the local network. If the system you wish to test uses a Luxul switch (or if your Cisco switch is not automatically discovered), choose **Enter Switch IP Address Manually** and enter the switch's IP address in the **Switch IP Address** field.

- Press **Next** to continue.
- Choose the **Switch Family** to which your switch belongs, enter the **Username** and **Password**, and press **Next** to continue.

The test screen is displayed:



The application will automatically generate a test grid for your configuration. You can switch individual outputs by clicking on a square in the grid (green squares denote the current selection for each output), or switch all outputs by clicking the appropriate column header.

Adding a Static Route to Your Router

It is necessary to establish a communication link between the JAP VLAN and your network. This is achieved by the manual addition of a "static route" to your router. If you have chosen one of the suggested IP ranges for your JAP LAN, your static route should be configured according to the table below:

	Class A (10.x.x.x)	Class B (172.16.x.x)	Class C (192.168.100.x)	Class C (192.168.200.x)
Destination IP	10.0.0.0	172.16.0.0	192.168.100.0	192.168.200.0
Subnet mask	255.0.0.0	255.255.0.0	255.255.255.0	255.255.255.0
Gateway IP	Switch IP	Switch IP	Switch IP	Switch IP

The procedure for adding the static route will vary depending on the make/model of your router. Below we detail three examples of common routers. Note: at the time of writing, the BT Home Hub does not support the addition of static routes.

Example #1: Netgear N200

- Enter the IP address of the router into a browser (by default, this is 192.168.1.1)
- When prompted, enter the username and password required for access, by default these are:

Username	admin
Password	password

The Router Manager screen is displayed. A list of options will be displayed on the left hand side.

- Choose **Advanced > Static Routes**

The below screen is displayed:

Enter a name for the static route (in the example, this is "JAP").

Enter the static route information from the final screen of the Just Add Drivers application into the **Destination IP Address**, **IP Subnet Mask** and **Gateway IP Address** fields.

- In the **Metric** field, enter "10".
- Click **Apply**. When prompted, re-enter the username and password.

Example #2: Draytek Vigor 2830

- Enter the IP address of the router into a browser (by default, this is 192.168.1.1)
- When prompted, enter the username and password required for access, by default these are as follows:

Username	admin
Password	admin

The management screen is displayed. A list of options will be displayed on the left hand side.

- Choose **LAN > Static Route**.
- Next, choose **Index 1** from the routing table (or the next available unconfigured route).

The below screen is displayed:

Enter the static route information from the final screen of the Just Add Drivers application into the **Destination IP Address**, **Subnet Mask** and **Gateway IP Address** fields.

- Ensure the **Enable** checkbox is ticked.
- Click OK. If prompted, re-enter the username and password.

Example #3: Linksys E900

- Enter the IP address of the router into a browser (by default, this is 192.168.1.1)
- When prompted, enter the username and password required for access, by default these are as follows:

Username	admin
Password	admin

A web page will display available configuration options for the router.

- Choose **Setup > Advanced Routing**, to display the following options on the screen:

The screenshot shows the Linksys E900 Advanced Routing configuration page. The page has a purple header with the Linksys logo and 'A Division of Cisco Systems, Inc.' on the left, and 'Firmware Version: V1.1.03' on the right. Below the header is a navigation bar with tabs for Setup, Wireless, Firewall, VPN, QoS, Administration, IPS, L2 Switch, and Status. The 'Setup' tab is selected, and within it, the 'Advanced Routing' sub-tab is active. The 'Advanced Routing' section has three sub-sections: Operating Mode, Dynamic Routing, and Static Routing. The 'Static Routing' sub-section is active, showing a table with one entry. The entry has the following values: Select Set Number: 1, Destination IP Address: 10.0.0.0, Subnet Mask: 255.255.0.0, Gateway: 192.168.1.254, and Hop Count: 1. There is a 'Delete This Entry' button next to the Select Set Number field. A 'Show Routing Table' button is at the bottom of the Static Routing section. On the right side of the page, there is a blue sidebar with text explaining the purpose of the Advanced Routing tab and a 'More...' link.

Enter the static route information from the final screen of the Just Add Drivers application into the **Destination IP Address**, **Subnet Mask** and **Gateway** fields.

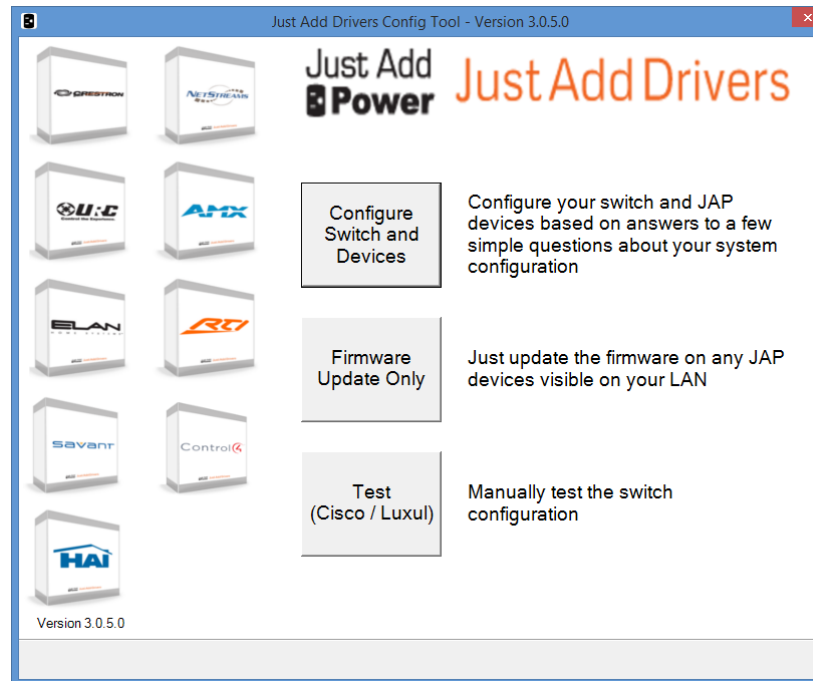
- Enter "10" in the **Hop Count** field.
- Click **Save Settings**.

Updating JustAddPower Device Firmware Only

The JustAddDrivers Configuration Tool can be used to update the firmware on JustAddPower devices only. To do this, the JustAddPower devices must be connected to the same LAN as your PC (preferably via an unmanaged switch). The intended use for this function is for updating JAP devices prior to configuration.

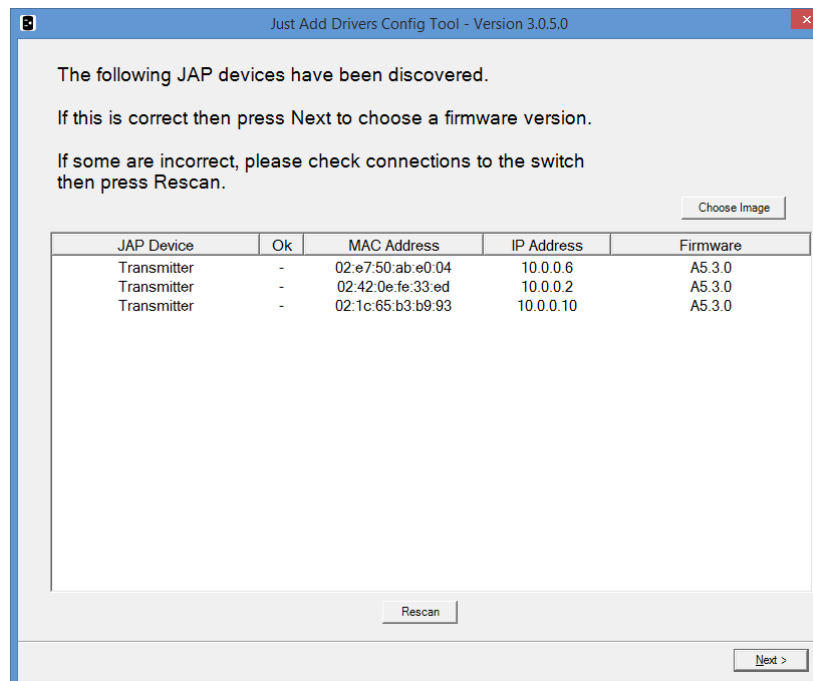
Note: If you are an installer wishing to update firmware on JAP devices currently installed in a JustAddDrivers configured system, you should update firmware via the **Verify Stack** option.

Run the application to display the first screen of the wizard:



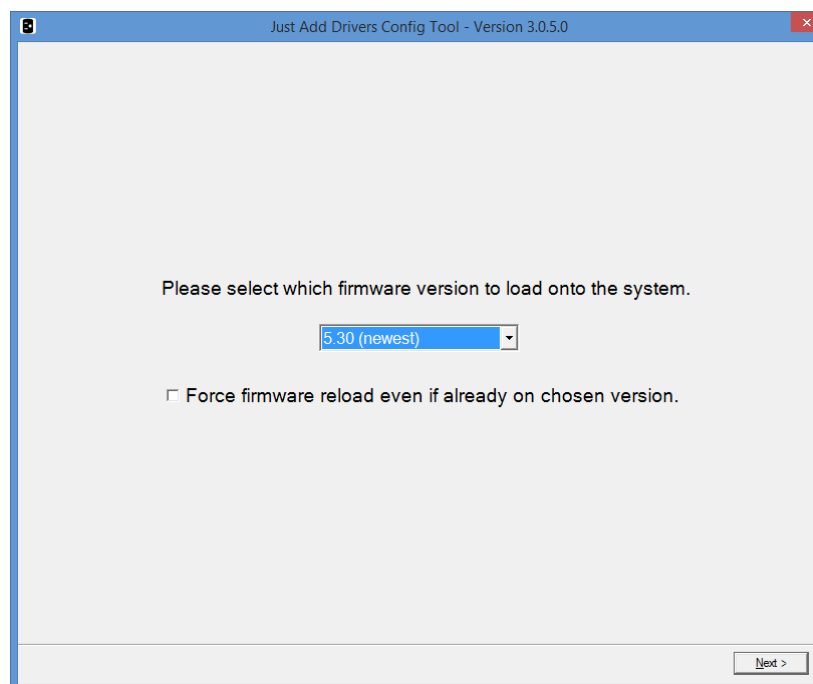
- Choose **Firmware Update Only**.
- Note the warnings in the pop up and click **OK**.

The next screen will list all discovered JustAddPower devices and detail their current firmware versions:



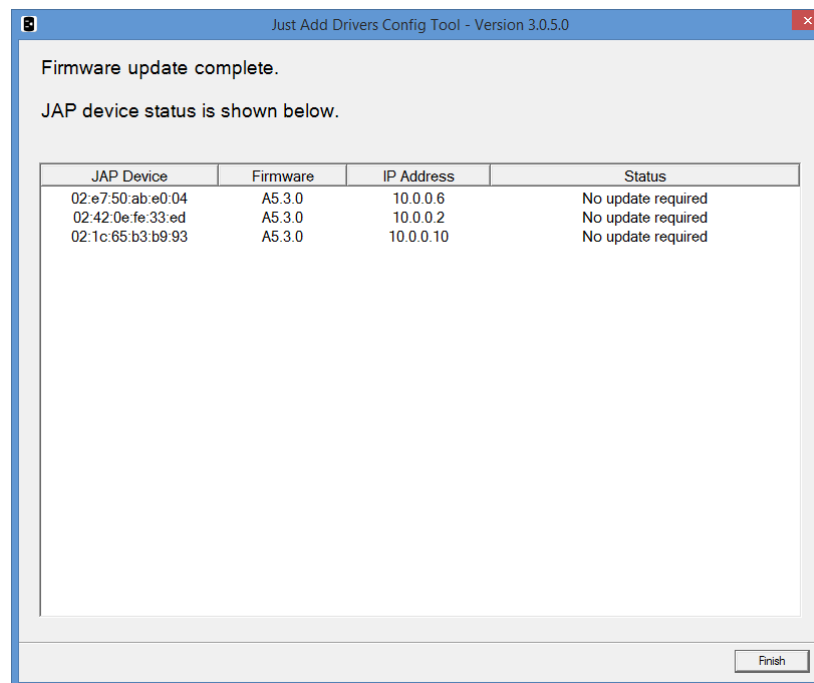
- Click **Next** to select a firmware revision.

If you want to re-install the same firmware version currently installed, check the box labelled "Force firmware reload even if already on chosen version".



- Click **Next** to configure the devices.

The application will update firmware according to the selections you have made. This process may take some time, depending on the number of devices. When this process is complete, the final screen of the application confirms the success of the firmware upgrades and displays the new versions:



- Click **Finish** to close the application.

AMX SWITCHING MODULE

Just Add Power High Definition over IP receivers and transmitters are a flexible way to distribute high definition video from a number of video sources to multiple video displays. The switch is used as a virtual HDMI matrix, connecting various video inputs to designated outputs e.g. televisions, monitors and projectors.

Add the module to your project

The module will be called "JAP_AVSwitch_[switch brand][Version number].tko". Copy this file from the zip package to your project folder and then add it to your project. Next, add parameter definitions and a define_module line to your master source file similar to the following:

```
define_device
dvJAP_SWITCH    = 0:4:0
vdvJAP_SWITCH   = 33001:1:1

...

// Configuration parameters for the JAP switch

// example netgear module

char JAP_SWITCH_IP[15] = '192.168.3.51';
char JAP_SWITCH_USERNAME[15] = 'admin';
char JAP_SWITCH_PASSWORD[15] = 'admin';
char JAP_SWITCH_PRIVILEGED_PASSWORD[15] = 'admin';
char JAP_SWITCH_LICENCE_KEY[256] = 'licence_key';

...

define_module 'JAP_AVSwitch_Netgear' JAP_SWITCH( vdvJAP_SWITCH, dvJAP_SWITCH,
    JAP_SWITCH_IP, JAP_SWITCH_USERNAME, JAP_SWITCH_PASSWORD,
    JAP_SWITCH_PRIVILEGED_PASSWORD, JAP_SWITCH_LICENCE_KEY);

// example cisco module

char JAP_SWITCH_IP[15] = '192.168.3.51';
char JAP_SWITCH_USERNAME[15] = 'cisco';
char JAP_SWITCH_PASSWORD[15] = 'cisco';
char JAP_SWITCH_PRIVILEGED_PASSWORD[15] = '';
char JAP_SWITCH_LICENCE_KEY[256] = 'licence_key';
persistent Char favourite[][1000] =
{'', '', '', '', '', '', '', ''};

...

define_module 'JAP_AVSwitch_Cisco' JAP_SWITCH( vdvJAP_SWITCH, dvJAP_SWITCH,
    JAP_SWITCH_IP, JAP_SWITCH_USERNAME, JAP_SWITCH_PASSWORD,
    JAP_SWITCH_PRIVILEGED_PASSWORD, JAP_SWITCH_LICENCE_KEY, JAP_FAVOURITES);
```

Configure Module Parameters

The parameters to the module are as follows:

vdvJAP_SWITCH	The virtual device representing the switch module. Define a device in the virtual device range.
dvJAP_SWITCH	The physical device for the switch (an IP device). Define a device in the IP device range.
JAP_SWITCH_IP	The IP address of the switch as a string.
JAP_SWITCH_USERNAME	The username with which to log in to the switch (e.g. the default username for a Cisco switch is 'cisco', and for a Luxul switch 'admin').
JAP_SWITCH_PASSWORD	The password associated with the username (e.g. the default password for a Cisco switch is 'cisco', and for a Luxul switch 'admin').
JAP_SWITCH_PRIVILEGED_PASSWORD	The privileged password for the user. The default privileged password is an empty string. Not required for Cisco or Luxul switches.
JAP_SWITCH_LICENCE_KEY	If you have been supplied with a driver licence key, define it as a string here. If you have not yet received a licence key, the module will limit the switch to operating in a restricted demonstration mode. See below for how to obtain a licence.
*JAP_FAVOURITES	Persistent char array containing preset configurations of the switch saved as "favourites". Persists after reboot.

*Cisco/Luxul specific parameter

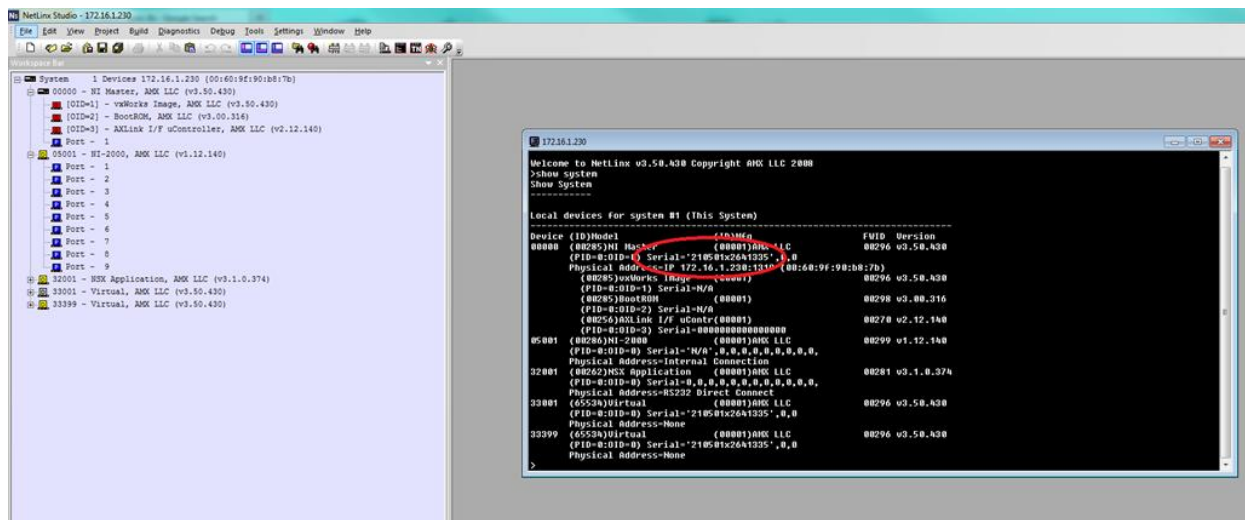
Obtaining a Licence Key

To obtain a licence key you will need to know the serial number of your AMX processor. This can be found printed on the underside of the unit itself, or by using NetLinx Studio.

Open your project file in NetLinx Studio.

- Go to **Tools > Telnet Session**.
- Once the session is established, type "show system".

The following information is displayed:



Note down the serial number as highlighted above and send it to drivers@justaddpower.com in order to obtain your key. Note that if you do not obtain a licence key, the driver will operate in demonstration mode, allowing limited functionality. For a Cisco switch, configuration is limited to a maximum of 3 receivers and 3 transmitters, and for a Luxul switch full functionality will be limited to 30 minutes (at which point the AMX processor will need to be restarted).

Once you have received the licence key, assign it to the `JAP_SWITCH_LICENCE_KEY` constant as a string, recompile and download to the master. The switch will then restart in full operational mode. If the switch is still in DEMO mode more than a minute after you downloaded the new code, check that you have entered the licence key correctly.

Interfacing with the Module

For a complete example of the usage of the module, see the demonstration project that is shipped with this module.

Commands

The module supports the following commands, sent to it using `send_command`, for instance:

```
send_command vdvJAP_SWITCH, 'SW 1,3,4,5=7;';
```

....switches outputs 1, 3, 4 and 5 to input 7.

Command	Explanation
SN?	Returns the serial number of the AMX processor. See the feedback section.
SW [<output-list>=<input>;]+	Requests the switch to perform a routing. <output-list> is a comma-separated list of outputs to switch (ascending, no breaks). <input> is the input to switch them to. Input 0 is a special input to switch the output(s) off, i.e. they are guaranteed not to receive data from any input. Multiple switch requests can be chained together, each ending in a semi-colon. All the following are valid: SW 4=1; SW 1,2,3=2; SW 2,3=7;5=3; The space after SW and the trailing semi-colon are always required!
SW [<output-list>=<input>;]+	Requests the switch to perform a routing. <output-list> is a comma-separated list of outputs to switch. <input> is the input to switch them to. Input 0 is a special input to switch the output(s) off, i.e. they are guaranteed not to receive data from any input. Multiple switch requests can be chained together, each ending in a semi-colon. All the following are valid: SW 4=1; SW 1,6,9=2; SW 2,3=7;5=3; The space after SW and the trailing semi-colon are always required!
SW?	Requests the switch to report the current routing. This will generate a SW report string for each output port. See the feedback section.
VERSION?	Returns a version string. See the feedback section.
FAV [<selected output-	Requests the switch to save the configuration of an output or list of outputs

Command	Explanation
<code>list>=<favourite>;]</code>	<p>as a favourite (up to a maximum of 8 individual favourites can be stored). For example:</p> <p>FAV 4=1; ...saves the current configuration of output 4 as favourite number 1.</p> <p>FAV 1,7,19=5; ...saves the current configuration of outputs 1, 7 and 19 as favourite number 5.</p> <p>Note: attempting to save a configuration as a favourite that has already been defined will overwrite the existing information.</p>
<code>POE [<stack number>,<port number>=<action>;]</code>	<p>Enables Power-Over-Ethernet (on compatible switches) for a particular port on a particular switch within a stack. For example:</p> <p>POE 1,1=OFF; ...disables POE on switch 1, port 1.</p> <p>POE 2, 14=ON; ...enables POE on switch 2, port 14.</p> <p>Note: If using a single switch in standalone mode, the switch number is always defined as 1.</p>
<code>*RECALL [<favourite>;]</code>	<p>Recalls a favourite by number, which has been defined using the FAV command. For example:</p> <p>RECALL 5; ...recalls the configuration stored as favourite number 5.</p>
<code>SAVE</code>	Save the current configuration of the switch or stack as the default configuration, to be applied upon reboot.
<code>MODE?</code>	Requests the configuration of the input/output configuration of the switch.

Feedback

The module supplies the following feedback sent as strings to the module virtual device. Each keyword is followed by a space.

String	Explanation
SN <serial number>	Reports the serial number of the AMX processor. This is needed for obtaining a full licence for the module.
SW <output>=<input>;	Reports that the given output has been switched to the given input. Input 0 indicates that the output has been switched off. Note that although switch requests can be chained together (see the Commands section), feedback is always sent separately for each output.
VERSION <version>	Returns a version string.
MODE	Reports the current input/output configuration of the switch or stack.
ERROR =<error message>;	Reports the status of any error states. For example: ERROR =0; ...no errors are present. ERROR =Please run JAD CONFIG again; ...a bad configuration error, requiring reconfiguration of the switch using JAD Config.

Troubleshooting

The current status of the module is reported through MODE feedback messages. Always allow a minute for the status to settle after the NetLinx master has restarted (e.g. after a download), or after refreshing or updating anything. After a minute, the last MODE message received should have been one of the following messages:

DEMO 3x3 (# mins)	The switch is in demonstration mode as a valid licence has not yet been entered
$n \times m$	The switch is in full operational mode with n inputs and m outputs

Any other message indicates a possible problem. The possible messages are:

Not connected	This should only be seen temporarily during the module settling period. If this message is seen for more than 1 minute, contact your supplier for support.
Connecting	The module is attempting but failing to connect to the switch. Check that you have correctly configured the IP address for the switch, that port 1 of the switch is connected to your management network and that the switch and the NetLinx master have been configured with compatible IP addresses and net masks.
Logging in	This should only be seen very briefly after the module has connected to the switch. If this message is seen for more than 1 minute, contact your supplier for support.
Invalid username or password	The username and/or password properties do not match those configured on the switch. Check the values of these properties. If the password is supposed to be blank, make sure that the property value is completely empty (that is, there are no spaces).
Connected	This should only be seen briefly after the module has logged in to the switch. If this message is seen for more than 1 minute, contact your supplier for support.
Configuring	This should only be seen temporarily while the module sets up the initial switch configuration. If this message is seen for more than 1 minute, contact your supplier for support.
RESTART	The module has detected an unusable configuration on the switch and will restart.
ERROR	The module has detected an unusable configuration, restarted the switch and the configuration is still unusable.

CONTROL4 SWITCHING MODULE

This Control4 driver was written and tested using Control4 Composer and an HC-1000 V2/V3 controller. Note that using a version of Composer earlier than version 2.2.2 is not recommended as it crashes if more than 16 inputs or outputs are specified.

Add the driver to your project

Copy the .c4i file from the zip package to:

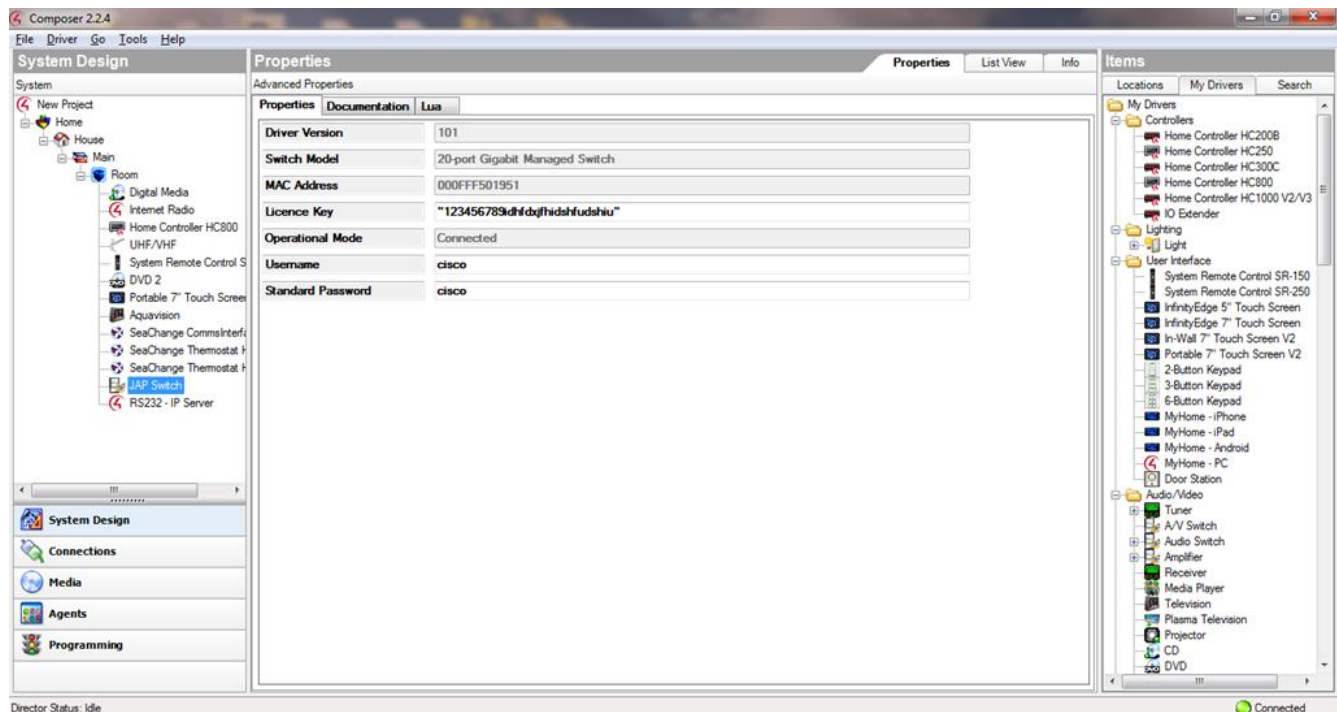
- My Documents\Control4\Drivers (Windows XP)
- Documents\Control4\Drivers (Windows 7/8)

Open Composer

The driver can be found under:

- **Device Type – A/V Switch**
- **Manufacturer – Just Add Power**

Double click on it to install the driver. It will appear with the default name "JAP Switch" as below:



Configure Properties

If you have been supplied with a driver licence key, enter it in the **Licence Key** property. If you have not yet received a licence key, the driver will limit the switch to operating in a restricted demonstration mode allowing 30 minutes of use before a driver reload is required. See below for how to obtain a licence.

Unless you have made any changes yourself to the switch, the **Username** and **Password** values will be the correct default values. If you have changed any of these values on the switch, enter the matching values here. No further properties need to be entered.

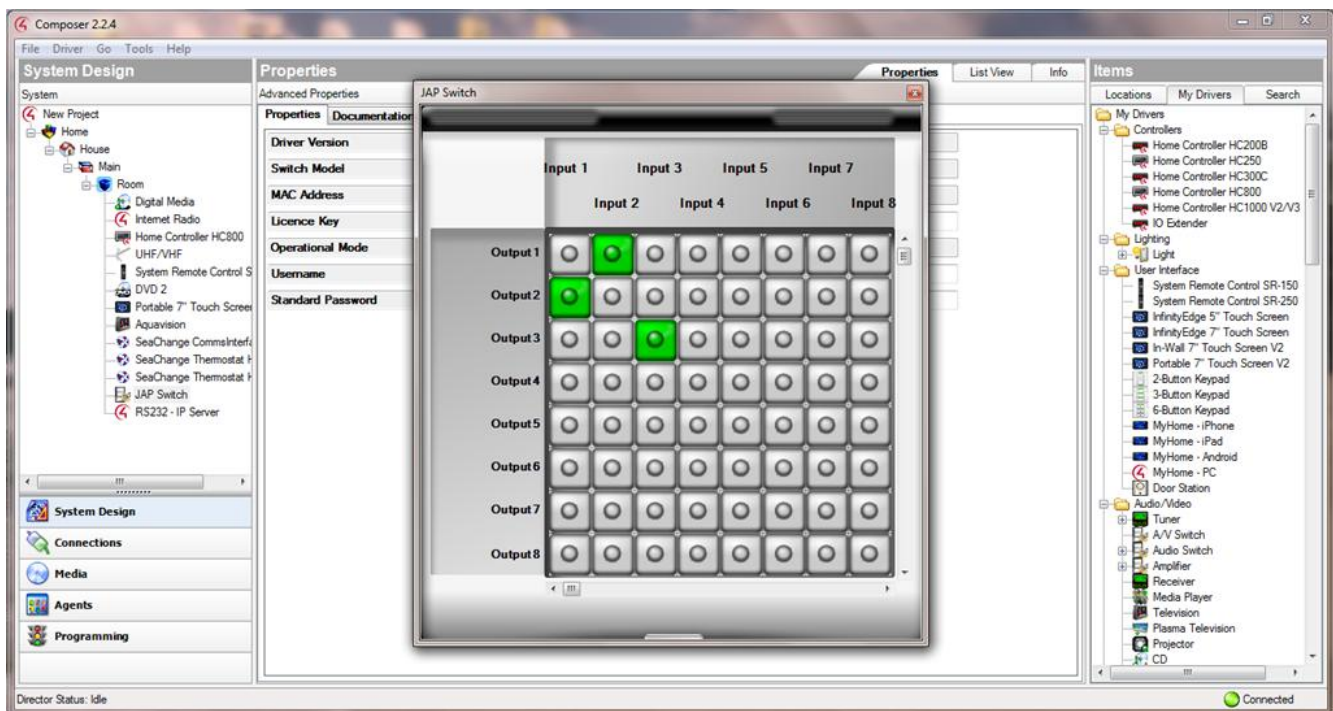
Configure Network Connection

Go to the **Connections** pane and choose the **Network** sub-panel. Click on the new A/V Switch entry and add the IP address for the switch. The driver will now connect to the switch. Note that the driver waits for 30 seconds after installation and after any properties are changed before reconnecting to the switch (to allow the user to complete all the changes they want to make) so allow a minute for the switch to be fully operational. The current operational status of the switch is shown in the **Operational Mode** property; when ready to go it will show the current switch configuration and license status, for example "12x7_Licensed".

Configure A/V Connections

Configure the matrix connections as per standard Control4 practice. The driver always presents 64 input and 64 output ports; make connections to as many HDMI input/output ports as the project uses. Note that the switch additionally exposes audio inputs and outputs. These are to be ignored – they are only present so that the driver feeds back the correct status to the test mode.

Double-click the switch in **System Design** and a control window will appear to allow you to test the connections. Note that Composer versions prior to 2.1.1 only support the visualisation of up to 16 inputs and outputs in this test tool. This does not impede the correct operation of the driver.



Finally, don't forget to click **Refresh Navigators** to update the user interface.

Advanced Commands (Cisco/Luxul Switches ONLY)

The driver has a number of advanced commands available to send to the JAP system. Select the **Programming** pane and click on the JAP switch in the **Device Actions** window. In addition to Input / Output switching commands, a number of **Device Specific Commands** are available:

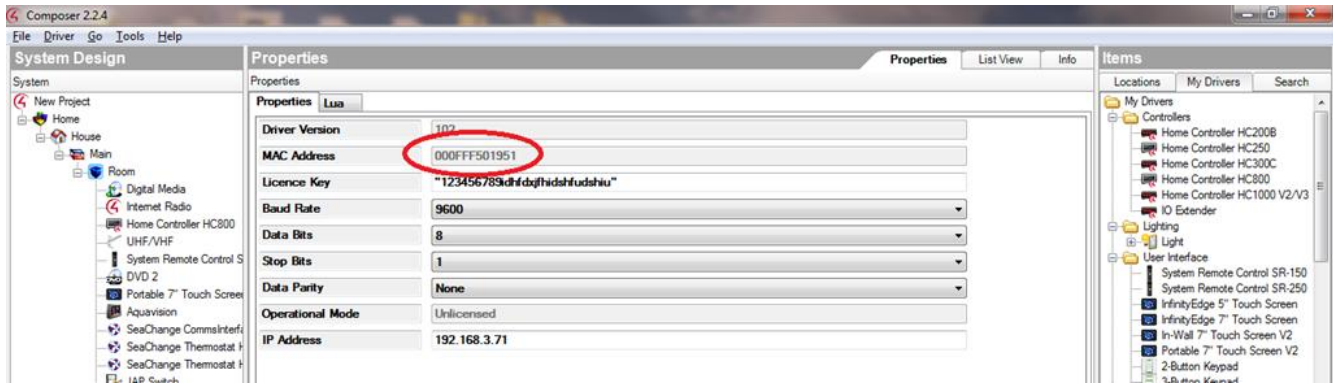
Command	Description
MULTISWITCH	Switches multiple outputs to the same input. For example: <code>"SW1,2,3,4=3;"</code> switches outputs 1, 2, 3 and 4 to input 3. <code>"SW3,7=19;SW16,41=6;"</code> switches outputs 3, and 7 to input 19 and outputs 16 and 41 to input 6.
POE CONTROL	Enables Power-Over-Ethernet on specific ports of compatible switches. For example: UNIT_ID = "1", PORT_ID = "4", ACTION = "ON" will turn power-over-ethernet on for port 4 on the switch with Unit ID 1.
CREATE FAVOURITE	Stores the current configuration of specified outputs as a "Favourite". For example: SELECT_OUTPUT = "1,2,3,4;", SET_FAVOURITE = "1" will save the current configuration of outputs 1, 2, 3, 4 as Favourite number 1. SELECT_OUTPUT = "5,9,13,24;", SET_FAVOURITE = "7" will save the current configuration of outputs 5, 9, 13, 24 as Favourite number 7. Note: setting a favourite already in use will overwrite existing data.
CREATE FAVOURITE WITH ALL OUTPUTS	Stores the current configuration of all outputs as a "Favourite". For example: FAVOURITE_NUMBER = "5" will save the current configuration of all outputs as Favourite number 5. Note: setting a favourite already in use will overwrite existing data.
RECALL FAVOURITE	Recalls a configuration stored as a "Favourite". For example: FAVOURITE_NUMBER = "3" will recall the configuration stored as Favourite number 3.
SAVE	Saves the current configuration of all inputs and outputs as the default configuration on the switch (this is the configuration that will be applied if the switch restarts).

There are also some advanced features available to the installer in the properties of the driver. Select the **System Design** pane, choose your JAP switch and select the **Actions** tab.

Feature	Description
PRINT CURRENT STATUS	Displays current status of all inputs and outputs in the Lua window.
PRINT FAVOURITE TABLE	Displays details for all stored Favourites in the Lua window.

Obtaining a Licence Key

To obtain a licence key, you will need to know the MAC address of your Control4 processor. This is displayed in the Properties tab of the driver in Composer, as highlighted below:



Note down this address and send it to drivers@justaddpower.com in order to obtain your key. Note that if you do not obtain a licence key, the driver will operate in demonstration mode, allowing a maximum of 30 minutes use before a driver reload is required.

Once you have received the licence key, enter it in the **Licence Key** property field. The switch will automatically restart in full operational mode once the licence has been entered. If the switch is still in DEMO mode more than a minute after you entered the licence key, check that you have entered it correctly.

Troubleshooting

The current status of the driver is shown in the **Operational Mode** property on the properties page. Always allow a minute for the status to settle after changing any properties, connections or other project settings, or after refreshing or updating anything. After a minute, the Operational Mode should show one of the following messages:

$n \times m_Demo$	The switch has a configuration of n inputs and m outputs and the driver does not have a valid licence key installed.
$n \times m_Licensed$	The switch has a configuration of n inputs and m outputs and the driver has a valid licence key installed.

Any other message indicates a possible problem. The possible messages are:

Not connected	This should only be seen temporarily during the driver settling period. If this message is seen for more than 1 minute, contact your supplier for support.
Connecting	The driver is attempting but failing to connect to the switch. Check that you have correctly configured the IP address for the switch, that port 1 of the switch is connected to your management network and that the switch and Director have been configured with compatible IP addresses and net masks.
Logging in	This should only be seen very briefly after the driver has connected to the switch. If this message is seen for more than 1 minute, contact your supplier for support.
Invalid username or password	The username and/or password properties do not match those configured on the switch. Check the values of these properties. If the password is supposed to be blank, make sure that the property value is completely empty (that is, there are no spaces),
Connected	This should only be seen temporarily while the driver checks the initial switch configuration. If this message is seen for more than 1 minute, contact your supplier for support.
Configuring	If the configuration on the switch does not match that specified in the driver properties then the driver will re-configure the switch. This message is shown during that process. If this message is seen for more than 3 minutes, contact your supplier for support.

CRESTRON SWITCHING MODULE

Introduction

This module is designed to control the switching of sources to displays in a Just Add Power HD Over IP Video System, after the Just Add Drivers configuration tool has been run. This module will connect, collect the current configuration for the switch and produce clean and quick changes between sources.

Crestron Configuration

Adding the module to your project

Open your Crestron Simpl Windows program. Copy the following files to the folder where your program is stored:

JAP AVSwitch [Switch] v*x.yy*.umc

JAP AVSwitch [Switch] v*x.yy*.ush

JAP AVSwitch [Switch] v*x.yy*.usp ...where [Switch] is Cisco, Luxul, Netgear or Pakedge.

Click **Tools -> Reload Device and Symbol Libraries from disk**. The JAP AVSwitch module will appear in your Symbol Library under **Project Modules -> Switcher**. The current version of the module is indicated by the v*x.yy* suffix. Add the module to your program.

Configure Properties

[Input to module](#)

Name	Type	Explanation
GET_CURRENT_STATUS	DIGITAL	When this input signal goes high it triggers a get current status, updating all OUTPUT_FB outputs to their current states
SAVE_CURRENT_STATUS	DIGITAL	Restores current output status after switch reboot.
*POE_CMD	STRING	Link the JAP_AVSwitch_POE_Control output (CMD) to this input (NOTE: The POE module is available as an add-on to this module).
OUTPUT_ <i>[output number]</i>	ANALOG	When the input changes it triggers the 'change input' sequence to switch that output to the input specified by the analogue number.
SELECT_ALL	DIGITAL	Select all outputs for multi-switching and favourites.
CLEAR_ALL	DIGITAL	Clear all outputs for multi-switching and favourites.
OUTPUT_SELECT_ <i>[output number]</i>	DIGITAL	Select particular outputs for multi-switching and favourites (e.g. outputs 1, 4, 7, 12).
CREATE_FAV_ <i>[favourite number]</i>	DIGITAL	Create favourite from SELECT_OUTPUTS.
RECALL_FAV_ <i>[favourite number]</i>	DIGITAL	Recall favourite configuration.
INPUT_SELECT_ <i>[input number]</i>	DIGITAL	Choose input for SELECT_OUTPUTS and process (e.g. switch outputs 1, 4, 7 & 12 to input 5).

Output from module

Name	Type	Explanation
OPERATION\$	STRING	Shows the current state of the switch. <i>See "Troubleshooting".</i>
MAC\$	STRING	MAC address of the switch (once connected)
ERROR_MSG\$	STRING	Configuration error message
POPUP_REBOOT	DIGITAL	Configuration error signal
FAV_FILE_ERROR	DIGITAL	Favourite file error signal
OUTPUT_FB_[<i>output number</i>]	ANALOG	Current input of that particular output.
OUTPUT_SELECT_[<i>output number</i>] _{FB}	DIGITAL	Feedback of selected output(s)

Parameters of module

Name	Type	Explanation
SWITCH_IP_ADDRESS	STRING	The IP address of the switch, example: 192.168.5.18
USER_NAME	STRING	The user name you log in to the switch with, example: "admin"
PASSWORD	STRING	The password you log in to the switch with, default: ""
PRIVILEGED_PASSWORD	STRING	The privileged password you log in to the switch with, default: "".
LICENCE_KEY	STRING	The Licence Key (see the section below entitled "Obtaining a Licence Key" for more information.

Default Netgear Switch Settings

If you have not explicitly changed them, the default login values for the Netgear Switch are:

USER_NAME: "admin"

PASSWORD: ""

PRIVILEGED_PASSWORD: ""

Default Packedge Switch Settings

If you have not explicitly changed them, the default login values for the Packedge Switch are:

USER_NAME: "packedge"

PASSWORD: "packedge"

PRIVILEGED_PASSWORD: ""

Default Luxul Switch Settings

If you have not explicitly changed them, the default login values for the Luxul Switch are:

USER_NAME: "admin"

PASSWORD: "admin"

PRIVILEGED_PASSWORD: ""

Default Cisco Switch Settings

If you have not explicitly changed them, the default login values for the Cisco Switch are:

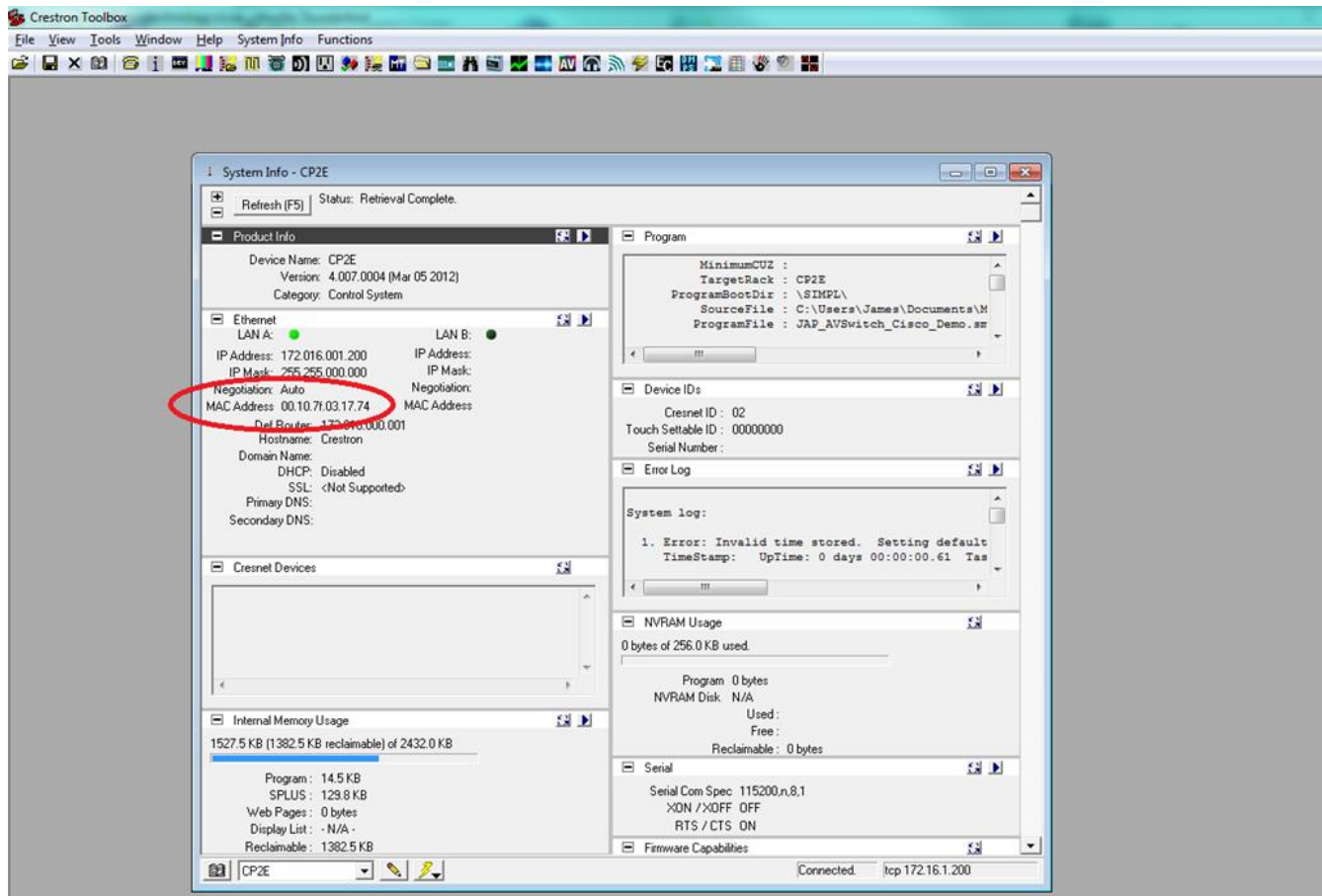
USER_NAME: "cisco"

PASSWORD: "cisco"

PRIVILEGED_PASSWORD: ""

Obtaining a Licence Key

To obtain a licence key, you will need to know the MAC address of your Crestron processor. This can be found by viewing **System Info** for your processor in Crestron Toolbox:



Note down the MAC address as highlighted above and send it to drivers@justaddpower.com in order to obtain your key. Note that if you do not obtain a licence key, the driver will operate in demonstration mode, allowing a maximum of 3 receivers and 3 transmitters, or a maximum of 30 minutes full functionality (depending on the switch). Once you have received the licence key, enter it in the LICENCE_KEY parameter field and re-send the project to the Crestron processor. If the switch is still in DEMO mode for more than a minute after you entered the licence key, check that you have entered it correctly.

Configuring Favourites (Cisco & Luxul Switches Only)

The current configuration of the switch can be saved as a favourite. The driver supports up to 8 favourites. As an example, using the test harness that comes bundled with the driver, navigate to the Favourites page and choose which outputs to save as a favourite, by highlighting them. Click **Create [Num]** to save the chosen configuration, or **Recall [Num]** to restore the configuration of a previously saved favourite. **NOTE:** If you choose to create a new favourite, it will overwrite the existing favourite configuration.



Enabling NVRAM

Favourites are defined in a text file which is stored in the Crestron Processor's NVRAM. It is therefore necessary to enable NVRAM in order for Favourites to function:

- Open Crestron Toolbox.
- Go to **Tools > System Info** and choose your processor, ensuring it connects.
- Next, go to **Functions > NVRAM Disk...**
- Check **Enable** and click **Apply**.

Troubleshooting

The current status of the module is shown on its OPERATION\$ output. Always allow a minute for the status to settle after changing any properties, connections or other project settings, or after refreshing or updating anything. After a minute, the OPERATION\$ output should show one of the following messages:

DEMO 3x3	The switch is in demonstration mode as a valid licence has not yet been entered
$n \times m$	The switch is in full operational mode with n inputs and m outputs

Any other message indicates a possible problem. The possible messages are:

Not connected	This should only be seen temporarily during the module settling period. If this message is seen for more than 1 minute, contact your supplier for support.
Connecting	The module is attempting but failing to connect to the switch. Check that you have correctly configured the IP address for the switch, that port 1 of the switch is connected to your management network and that the switch and Director have been configured with compatible IP addresses and net masks.
Logging in	This should only be seen very briefly after the module has connected to the switch. If this message is seen for more than 1 minute, contact your supplier for support.
Invalid username or password	The username and/or password properties do not match those configured on the switch. Check the values of these properties. If the password is supposed to be blank, make sure that the property value is completely empty (that is, there are no spaces),
Connected	This should only be seen temporarily while the module sets up the initial switch configuration. If this message is seen for more than 1 minute, contact your supplier for support.
Configuring	This should only be seen temporarily while the module sets up the initial switch configuration. If this message is seen for more than 1 minute, contact your supplier for support.
FAV_FILE_ERROR	Check NVRAM is enabled on your Crestron processor, as this is where the favourites file is stored.
POPUP_REBOOT	If the module discovers a bad configuration on the switch upon connection, it will force a reboot of the switch. If the bad configuration persists, re-run JAD Config to reconfigure the switch.

CRESTRON JUST ADD DRIVERS POWER-OVER-ETHERNET ADD ON MODULE

Introduction

This add on module is designed to work with the Crestron switching module, giving control over POE ports on compatible Cisco and Luxul switches.

This Crestron module has been tested with Just Add Power transmitter and receiver devices and was written and tested using Crestron Simpl Windows running on series 2 and 3 Crestron Processors.

NOTE: This module is only relevant to Cisco and Luxul switches that have Power-Over-Ethernet capability.

Add the module to your project

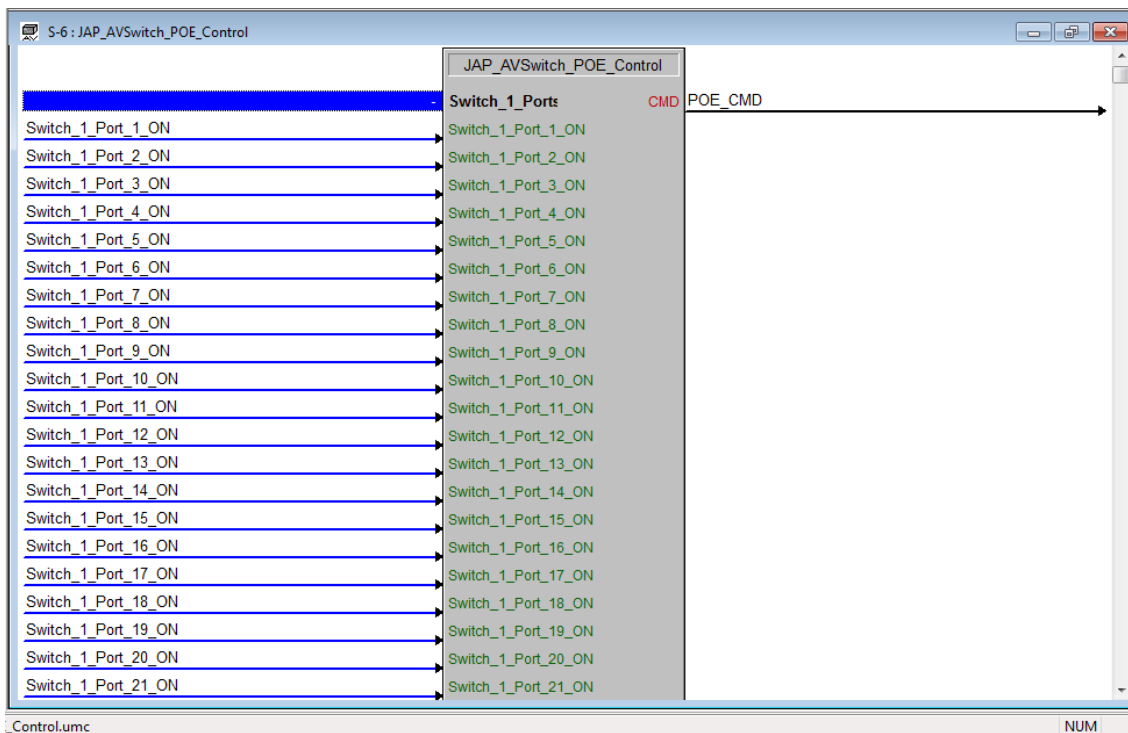
Open your Crestron Simpl Windows program. Copy the following files to the folder where your program is stored:

JAP AVSwitch POE Control v $x.yy$.umc

JAP AVSwitch POE Control v $x.yy$.ush

JAP AVSwitch POE Control v $x.yy$.usp

and then click Tools -> Reload Device and Symbol Libraries from disk. The JAP AVSwitch module will appear in your Symbol Library under Project Modules -> Switcher. The current version of the module is indicated by the v $x.yy$ suffix. Add the module to your program.



Configure Properties

Input to module

Name	Type	Explanation
SWITCH_ <i>[stack number]</i> _PORT_ <i>[port number]</i> _ON	DIGITAL	Specify the switch number (if in a stack configuration) and port number to switch POE on (NOTE: if not in stack configuration, switch number is always "1").
SWITCH_ <i>[stack number]</i> _PORT_ <i>[port number]</i> _OFF	DIGITAL	Specify the switch number (if in a stack configuration) and port number to switch POE off (NOTE: if not in stack configuration, switch number is always "1").

Output from module

Name	Type	Explanation
POE_CMD	STRING	Send the POE on or off command to the switching module.

RTI SWITCHING MODULE

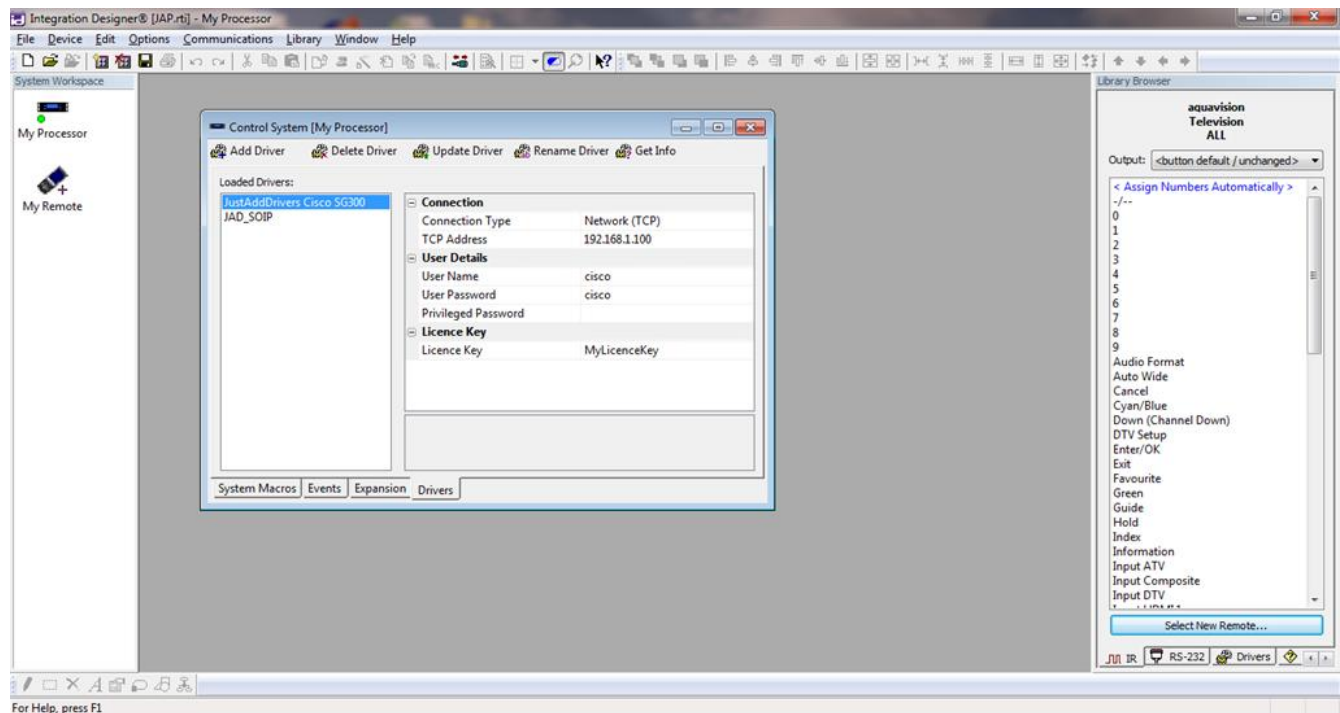
This module is designed to allow an RTI control system to control a Just Add Power HD over IP video distribution system using managed switches. The module can route transmitters (source devices) to receivers (display devices), trigger macros based on routing events and display variables.

Adding the driver to your project

Open your RTI Integration Designer System file and select your processor from the **System Workplace**.

- Click on the **Drivers** tab of the control system window and select **Add Driver**.
- In the browse window that appears, navigate to the location of the driver file on your PC (entitled *JAD_Switch.rtiDriver* where **Switch** can be *Cisco*, *Luxul*, *Netgear* or *Pakedge*), select it and click the **Open** button

The Cisco variant will be used as an example in this section. The driver details will be displayed as below:



Configuration Settings

There are a number of configuration settings you must ensure are correct before using the driver:

Connection Type	This option is set to "Network (TCP)" by default and is currently un-editable.
TCP Address	Enter the IP address of your switch (e.g. 192.168.1.100).
User Name	Enter the username required to access the switch (by default this is "cisco")
User Password	Enter the password required to access the switch (by default this is "cisco")
Privileged Password	Not required for Cisco switches
Licence Key	Obtain a licence key and enter it here

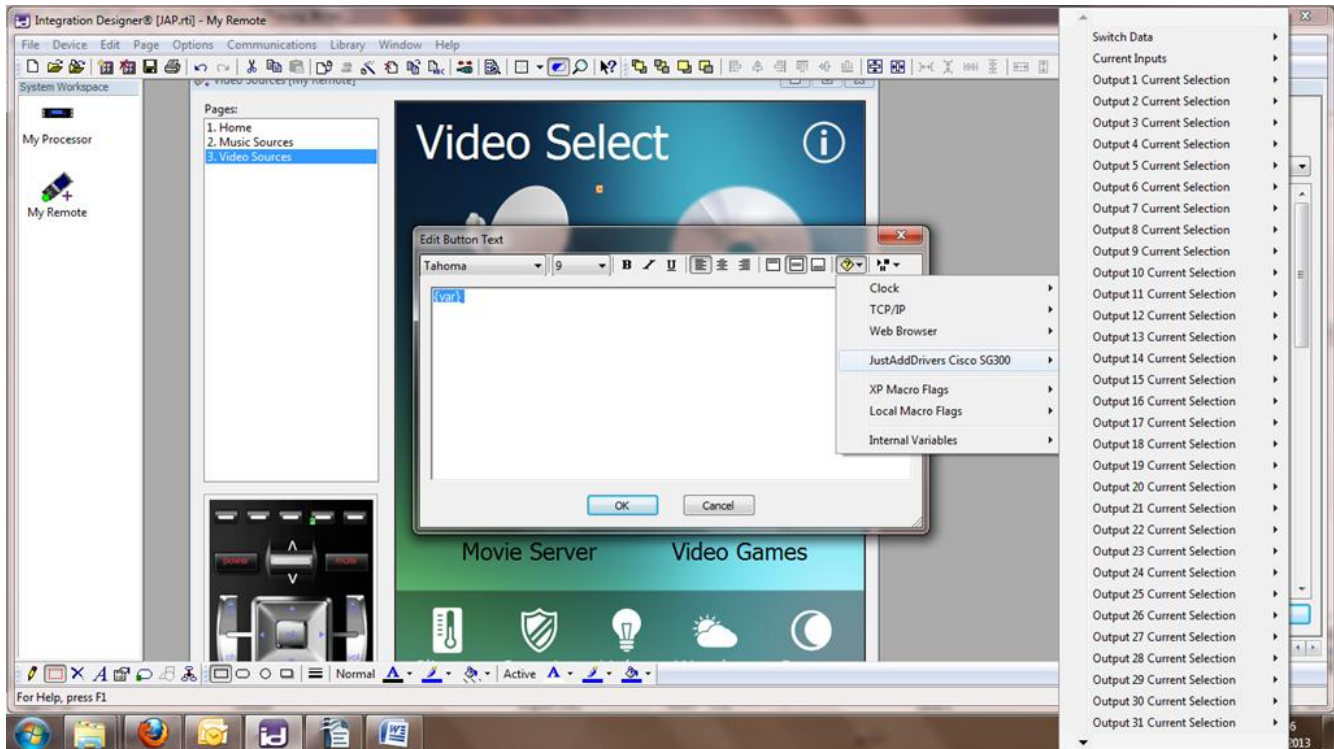
- Choose **Device > Save** to save your changes.

Displaying a Variable

There are a number of variables available in the driver, allowing your controller to display information about the status of the Just Add Power system or to change the appearance of buttons based on the current status.

To add information to a button:

- Choose your remote from the **System Workplace**, right click on the button or text field to which you want to add a variable and choose **Edit Text**....
- Click on the **Add Control Variable** button to display the drop down list and select **JustAddDrivers Cisco SGxxx** as in the example displayed below.



The available variables are as follows:

Switch Data	Display the operational mode or model number of the switch.
Current Inputs	Display the current input routed to a particular output.
Output x Current Selection	Change the appearance of a button according to routing status.

To change a button state based on a variable:

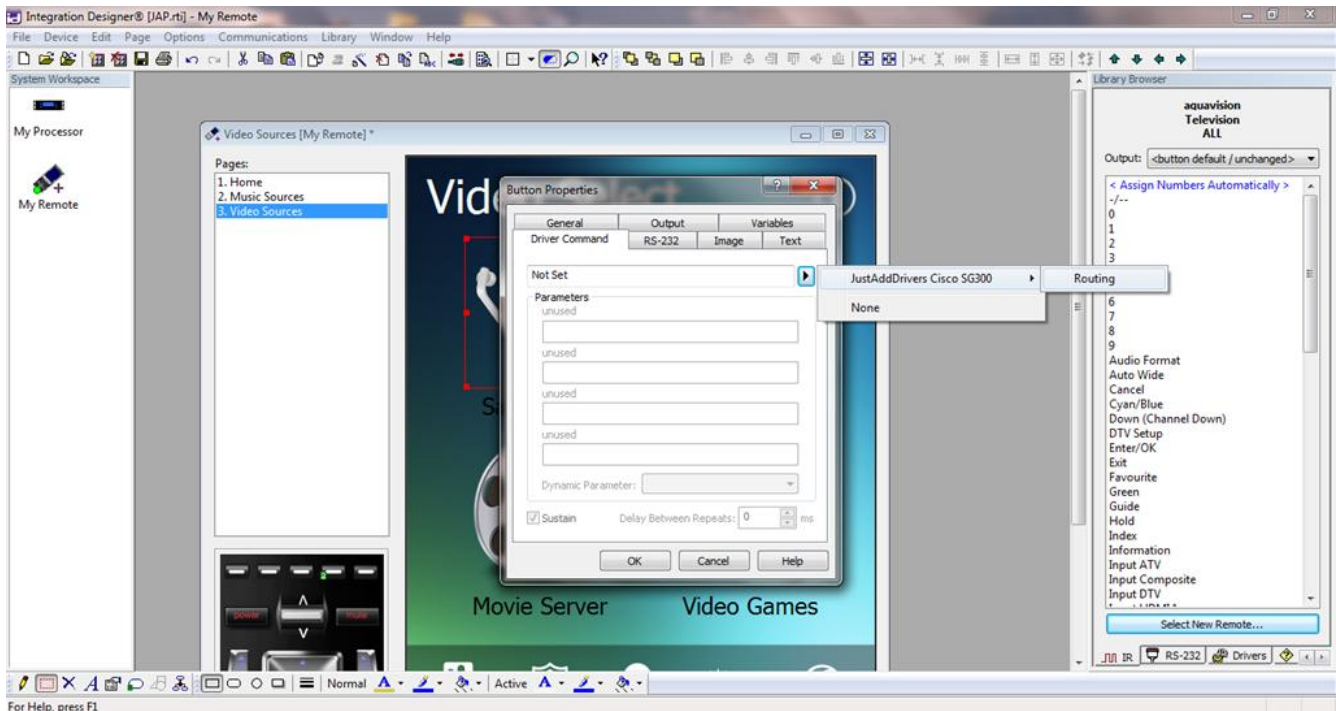
- Right click on the button, select **Edit Properties...** and choose the **Variables** tab.
- Click the arrow button for the button state you want to change and select **JustAddDrivers Cisco SGxxx > Output 1 Selected**.
- Click the **OK** button.

This will now change the button state when output 1 is selected.

Adding an Output Routing Command to a Button

You can add a driver command to a button to switch a particular input to a particular output.

- Choose your remote from the **System Workplace**, right click on the button to which you want to add the command and choose **Edit Properties....**
- Click on the **Driver Command** tab.
- Click the arrow button on the right hand side and select **JustAddDrivers Cisco SGxxx > Output Routing** as in the example displayed below.



- Choose which combination of **Input** and **Output** parameters you wish to route.
- Click the **OK** button to add the command to the button.

You can also use the driver command **Switch All Outputs** to switch all outputs in your configuration to a specific input. This command will ensure all available display devices will be showing the same images from one selected source. To use this command, you will need to select the command as described above and choose the input source you wish to route to all available outputs.

You can add routing commands to button macros and system macros also.

Adding an Output – Input Selection Command to a Button

You can also use the driver commands from the **Output – Input Selection** to switch outputs to a specific input.

- Choose your remote from the **System Workplace**, right click on the button to which you want to add the command and choose **Edit Properties....**
- Click on the **Driver Command** tab.
- Click the arrow button on the right hand side and select **JustAddDrivers Cisco SGxxx > Output – Input Selection** command you wish to use.

The following commands are available:

"Select All Outputs"	Selects all available outputs according to the current configuration.
"Clear Output Selection"	Clears the selected outputs so that they are all unselected.
"Select Output"	Allows the user to select one output only.
"Toggle Output"	Allows the user to toggle the output selected state.
"Select Input"	Allows the user to switch all the currently selected outputs to the chosen input.

Using the Output – Input Selection commands in this section is a two step process.

1. You must first select the outputs i.e. display devices, you wish to switch. You can do this in several ways. You can select the outputs on an individual basis using the **Select Output** command or you can use the **Toggle Output** command, which will change the output selected state from off to on and vice versa. You can also use the **Select All Outputs** command to select all available outputs with one button press. Using the displaying variables as described earlier, the button appearance of the selected output can change state according to the current state of the output.
2. You can now select the input source to switch the selected outputs by using the **Select Input** command.

Adding a Preset Selection Command to a Button

You can also use the driver commands from the Preset Selection to store and recall up to 16 switch configurations.

- Choose your remote from the **System Workplace**, right click on the button to which you want to add the command and choose **Edit Properties....**
- Click on the **Driver Command** tab.
- Click the arrow button on the right hand side and select **JustAddDrivers Cisco SGxxx > Preset Selection**.

The following selection of commands is available:

- Store Preset (All Outputs) - this command will store the input/output configuration for all outputs of the switch according to the current configuration. A preset identifier will be required in the range 1 – 16.
- Store Preset (Selected Outputs) - this command will store the input/output configuration for the currently selected outputs only. A preset identifier will be required in the range 1 – 16.
- Recall Preset Selection - this command will allow the user to recall a stored switch configuration.

After using the commands in the Output Routing or Output – Input Selection, the switch will be configured with all outputs switched to specific inputs. If you wish to store the input configuration for **all the outputs** on your system, then use the **Store Preset (All Outputs)** command.

If you are configuring a subset of outputs e.g. for a room or seating area, then ensure a subset of outputs are currently selected and have been switched to the particular input source that you require. Use the **Store Preset (Selected Outputs)** command to store the current configuration of the **selected outputs only**. The configuration of the unselected outputs will not be stored.

If you wish to recall a preset selection, use the **Recall Preset Selection** command with the preset identifier parameter you wish to recall. The switch will now be configured according to the stored preset. All available outputs will be switched if the Store Preset (All Outputs) command had been used to store the preset. A subset of outputs will be switched if the Store Preset (Selected Outputs) command had been used to store the preset.

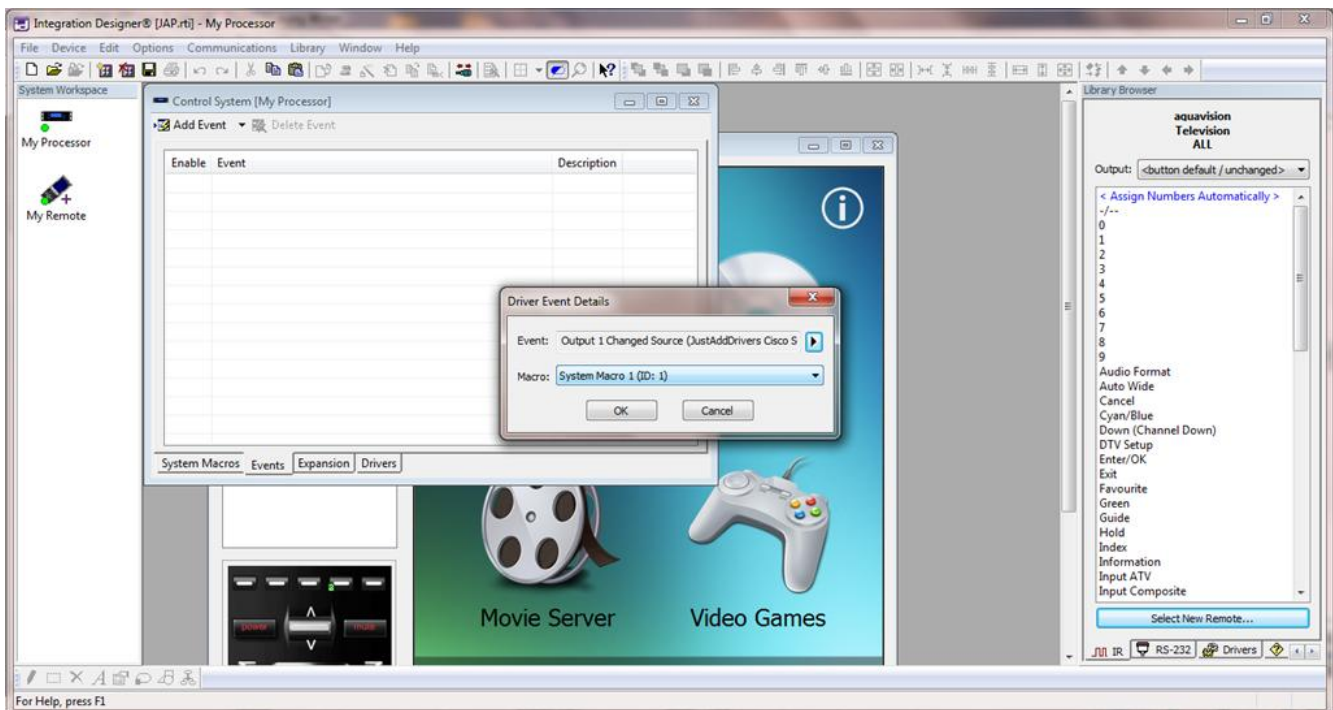
Please note that only 16 stored presets are available.

Adding a Driver Event

The driver supports the addition of events so that macros can be triggered when an Output source is changed.

- Choose your processor from the **System Workplace** and click on the **Events** tab.
- Choose **Add Event > Add Driver Event**.
- To create an event when, for example, Output 1 changes source, click on the arrow button and select **JustAddDrivers Cisco SGxxx > Output 1 Changed Source**.

The following screen is displayed:



- Choose a macro from the Macros drop down list to trigger when the source changes.
- Click the **OK** button.

If the **Enable** checkbox is ticked (which it is by default) then your event will trigger when appropriate.

Obtaining a Licence Key

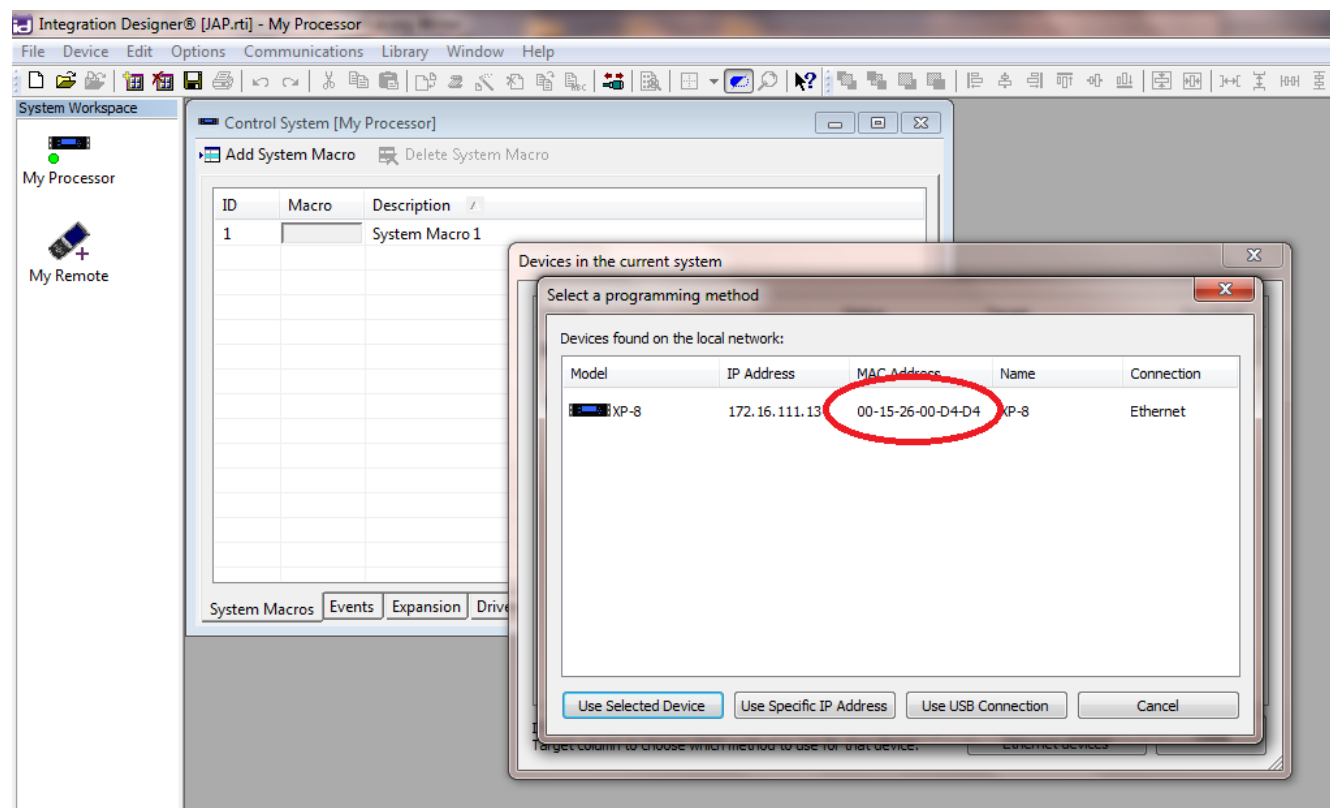
To obtain a licence key, you will need to know the MAC address of your RTI processor. This can be found using Integration Designer.

- Open your system file in Integration Designer.

Choose **Communications > Send to Device....**

- Click on the **Target** type for your processor (e.g. **USB**)

The below screen is displayed:



Note down the MAC address as highlighted above and send it to drivers@justaddpower.com in order to obtain your key. Note that if you do not obtain a licence key, the driver will operate in demonstration mode, allowing a maximum of 3 receivers and 3 transmitters (the driver will allow you to assign more than three ports, but only the first three will function).

Troubleshooting

The **Operational Mode** variable shows the current status of the driver and can therefore be used to diagnose problems with the configuration.

Always allow 1 minute after making any project changes for the status to be displayed. One of the following two fields should be displayed:

DEMO	The switch is in demonstration mode as a valid licence key has not been entered.
$n \times m$	The switch is fully operational with n inputs and m outputs.

Any other message displayed in the operational mode variable indicates a problem with the configuration. Possible messages are:

Not Connected	This should only be seen temporarily during the driver initialization period. If this is seen for more than 1 minute, check your network settings as described below for "Connecting". If that does not fix the problem, contact your supplier for support.
Connecting	The driver is attempting but failing to connect to the switch. Check that you have correctly configured the IP address for the switch, that port 1 of the switch is connected to your management network and that the switch and Director have been configured with compatible IP addresses and net masks.
Logging In	This should only be seen very briefly after the driver has connected to the switch. If this message is seen for more than 1 minute, contact your supplier for support.
Invalid Username or Password	The username and/or password properties do not match those configured on the switch. Check the values of these properties. If the password is supposed to be blank, make sure that the property value is completely empty (that is, there are no spaces).

SERIAL-OVER-IP MODULES

Introduction

A SERIAL-OVER-IP module can be added to your system in order to send control commands via a JustAddPower device. The SOIP drivers can be used to send console commands to a JAP device, serial commands via the serial port on a JAP device and CEC commands via the HDMI port on a JAP device.

The Serial-Over-IP modules have five main modes:

GUEST MODE: provides full, bi-directional serial control, but requires one instance of the driver for every serial port in use. This mode requires two sockets (one for console commands and one for Serial), which can be resource intensive.

CLI (SINGLE): the driver sends a single command to a single receiver. This mode does not require a second socket connection, so is not as resource intensive as Guest Mode.

CLI (ALL): the driver sends a single command to all connected receivers. This mode does not require a second socket connection, so is not as resource intensive as Guest Mode.

DUMB DIRECT: all serial commands sent to a transmitter are sent to all connected receivers. This mode also only uses a single socket connection.

NONE: all serial control is disabled in the driver, but other features are still available (console commands, CEC etc).

The full list of serial commands are described below.

Send Serial Command

A serial command string may be sent via the serial port. Caution must be taken when using this command.

Console Commands

The following predefined commands may be sent via the serial port:

- Audio Delay Decrease, Audio Delay Increase
- Link restart, Link stop
- Link watchdog enable, Link watchdog disable
- HDMI Mode On, HDMI Mode off and HDMI Mute/Darken
- Selecting various video modes, 0, 1 ,2 , 3, and dynamic.
- USB Enable, USB Take Control, USB Disable
- Capture RX EDID
- Console reboot
- Watch 1080p or 720p

Console Commands (Advanced)

A console command string may be sent via the serial port. Caution must be taken when using this command.

Console Audio Delay

An audio delay may be set - a value between 0 and 25.

Console VW Mode Change

The basic video wall may be adjusted by changing the size and location of the video image.

Parameters are number of rows, number of columns, row position and column position - all parameters are integer values between 1 and 16.

Console VW Tear Adjust

The video wall tear adjust can be modified. The parameter is a value between 0 and 100000.

Console CEC Commands

The following predefined CEC Commands can be sent via the HDMI port:

- CEC Display On
- CEC Display Off
- CEC TV Speaker ON
- CEC TV Speaker OFF
- CEC Force TV to JAP HDMI

Console Send CEC Commands (advanced)

A console CEC byte string may be sent via the HDMI port. Caution must be taken when using this command.

On Screen Display Commands

The following On Screen Display Commands can be sent via the serial port:

- Set OSD Format – setting the size, transparency and colour of the on screen text
- OSD On – used to display on screen text
- OSD Off – used to turn off the textual display

AMX JUST ADD DRIVERS SERIAL-OVER-IP MODULE

This module is designed to control equipment through the RS232 ports on Just Add Power devices. It gives the ability to access the ports from within AMX code as if they were on the AMX controller itself.

This AMX module has been tested using Just Add Power transmitter and receiver devices, and was written and tested using NetLinx Studio version 2.7 compiling to run on an NI-2000 controller.

Add the module to your project

Copy the "JAP_Telnet_Serial_Commands.tko" file from the zip package to your project folder and then add it to your project. Then add parameter definitions and a define_module line to your master source file similar to the following:

define_device

```
dvJAP_SERIAL   = 0:4:0
dvJAP_CONTROL  = 0:5:0
vdvJAP_DEV     = 33001:1:1
```

```
dvJAP_TP       = 10001:1:1
```

```
dvJAP_SERIAL_DEMO = 5001:1:1
```

define_variable

```
// Configuration parameters for the JAP device
char JAP_DEV_IP[15] = '10.128.0.2';
char JAP_DEV_LICENCE[100] = '';
char JAP_DEV_BAUD[15] = '115200';
char JAP_DEV_DATABIT[15] = '8';
char JAP_DEV_PARITY[15] = 'None';
char JAP_DEV_STOPBIT[15] = '1';
char JAP_DEV_CONTROL_FLOW[15] = 'N';
integer SOIP_MODE = 1; //1 = GUEST MODE 2 = CLI ACCESS 3 = DUMB REDIRECT
```

```
define_module 'JAP_Telnet_Serial_Commands' JAP_TERMINAL_SOIP (
    vdvJAP_DEV, dvJAP_SERIAL, dvJAP_CONTROL,
    JAP_DEV_IP, JAP_DEV_BAUD, JAP_DEV_DATABIT, JAP_DEV_PARITY,
    JAP_DEV_STOPBIT, JAP_DEV_CONTROL_FLOW, JAP_DEV_LICENCE, SOIP_MODE );
```

```
define_module 'JAP_Telnet_Commands' JAP_TERMINAL (
    vdvJAP_DEV, dvJAP_CONTROL,
    JAP_DEV_IP, JAP_DEV_LICENCE, SOIP_MODE );
```

define_start

```
{
    wait 10
    {
        // this command starts the module
        send_command vdvJAP_DEV, "'TelnetEnable'";
    }
}
```

Configure Module Parameters

The parameters to the module are as follows:

<code>vdvJAP_DEV</code>	The virtual device representing the serial over IP module. Define a device in the virtual device range.
<code>dvJAP_DEV</code>	The physical device for the Just Add Drivers transmitter or receiver (an IP device). Define a device in the IP device range.
<code>*dvJAP_SERIAL</code>	The Ethernet port for controlling the serial port.
<code>JAP_DEV_IP</code>	The IP address of the Just Add Drivers transmitter or receiver as a string.
<code>JAP_DEV_LICENCE</code>	If you have been supplied with a driver licence key, define it as a string here.
<code>*JAP_DEV_BAUD</code>	The baud rate required for the destination serial port.
<code>*JAP_DEV_DATABIT</code>	The number of data bits in each character.
<code>*JAP_DEV_PARITY</code>	The type of parity bit to send.
<code>*JAP_DEV_STOPBIT</code>	The number of stop bits to send.
<code>*JAP_DEV_CONTROL_FLOW</code>	The type of flow control to use.
<code>*SOIP_MODE</code>	The mode of the JAP_Telnet_Serial_Commands module.

*parameters specific to the JAP_Telnet_Serial_Commands module

Obtaining a Licence Key

A licence key can be obtained by sending an email to drivers@justaddpower.com. Once you have received the licence key, assign it to the `JAP_DEV_LICENCE` constant as a string, recompile and download to the master.

NOTE: With no licence key defined, the driver will not function.

Interfacing with the Module

For a complete example of the usage of the module, see the demonstration project that is shipped with this module.

Commands

The module supports the following commands, sent to it using **send_string**, for instance:

```
send_string vdvJAP_DEV, 'hello';
```

....sends the text "hello" to the serial port.

To define the settings for the serial port at runtime, use the following command:

```
send_command vdvJAP_DEV, 'SET 9600,N,8,1,DISABLE';
```

...configures the baud rate to "9600", parity bit to "none", data bits to "8", stop bits to "1" and flow control to "disabled".

Command	Explanation
JAD_CONSOLE [number]	<p>Send a console command as referenced in SOIPCommand include file. For example:</p> <pre>send_command vdvJAP_DEV, "JAD_CONSOLE 8"</pre> <p>...sends "JAD_REBOOT", to reboot the JAD device.</p> <p>Add parameters to a console command. For example:</p> <pre>send_command vdvJAP_DEV, "JAD_CONSOLE 'ItoA(JAD_BASIC_VIDEO_WALL_MODE_CHANGE), '1,2,3,4' "</pre> <p>....tells a Just Add Power Receiver that it is in row 1, column 2 of a 3-row, 4-column video wall.</p> <p>Note: all parameters must be separated using commas (as above).</p>
JAD_CONSOLE_ADVANCED [command]	<p>Send an arbitrary console command. For example:</p> <pre>send_command vdvJAP_DEV, "JAD_CONSOLE_ADVANCED reboot"</pre> <p>...sends "reboot" to the JAD device.</p>
JAD_CEC [number]	<p>Send a CEC command as referenced in include file. For example:</p> <pre>send_command vdvJAP_DEV, "JAD_CEC 1"</pre> <p>...sends "JAD_DISPLAY_ON", to switch the display on.</p>
JAD_CEC_ADVANCED [hex value]	<p>Send a CEC command, using the actual Hex values. For example:</p> <pre>send_command vdvJAP_DEV, " 'JAD_CEC_ADVANCED E0 04' "</pre> <p>...sends the hex value "E0 04".</p>
TelnetEnable	<p>Enables Telnet (must be sent before driver will start, in order to avoid potential overload). For example:</p> <pre>send_command vdvJAP_DEV, "TelnetEnable"</pre>
SOIP ENABLE	Enables the serial port when in Guest Mode.

The SOIP telnet socket is dropped when not in use in order to save on system resources. The SOIP ENABLE command is used to re-enable the telnet port upon starting the module. If multiple instances of the module are in use, it is important to stagger start up to avoid overloading the system.

NOTE: it is the responsibility of the AMX programmer to ensure appropriate TCP "keepalive" messages are sent.

Feedback

Feedback comes via the virtual device and accessed through the string **data.text**:

`data_event [vdvJAP_DEV]`

```
{
  string:
  {
    data.text
  }
}
```

CONTROL4 JUST ADD DRIVERS SERIAL-OVER-IP MODULE

This Control4 driver was written and tested using Control 4 Composer and an HC-1000 V2/V3 controller. The driver is designed to work with managed switches and is designed to control equipment through the RS232 ports on Just Add Power devices. Note that one instance of the driver is required for each serial port that is to be controlled.

Add the driver to your project

Copy the .c4i file from the zip package to:

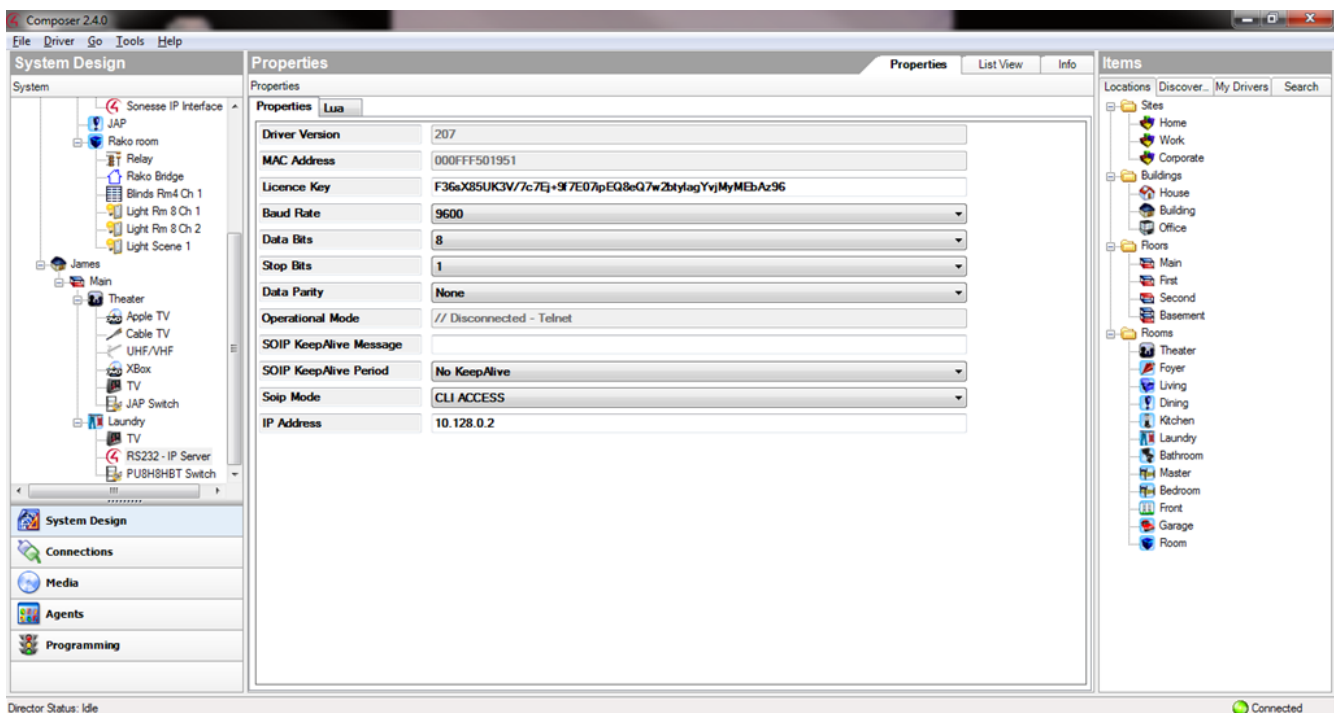
- My Documents\Control4\Drivers (Windows XP)
- Documents\Control4\Drivers (Windows 7/8)

Open Composer

The driver can be found under:

- **Device Type – Others**
- **Manufacturer – Just Add Power**

Double click on it to install the driver. It will appear with the default name "RS232 – IP Server" as below:



Configure Properties

Driver version	The release version of the driver
MAC Address	The MAC address of the Control4 processor
Licence Key	Obtain a licence key and enter it here
Baud Rate	Choose the baud rate of the destination serial port
Data Bits	Choose the number of data bits in each character
Stop Bits	Choose the number of stop bits to send

Data Parity	Choose the type of parity bit to send
Operational Mode	The connection and licence status of the driver
SOIP KeepAlive Message	Enter a message to be used as the keepalive for the TCP connection
SOIP KeepAlive Period	Choose a period for sending the keepalive message
Soip Mode	Choose the mode by which the driver communicates with the devices
IP Address	The IP address of the JustAddPower device

Configure Serial Control

Configure the serial connections as per standard Control4 practice. In **Connections > Control/AV**, choose a device to control and the newly configured serial port will appear under **Control Inputs** just like a standard Control4 serial port.

Programming Commands

Choose the **Programming** pane, and in the **Actions** area select the "RS232 – IP Server." A number of commands are available by as **Device Specific Commands**:

Command	Description
Console Command	Choose a console command to send
Console Command (Advanced)	Enter a console command to send (or choose form the list)
Set Audio Delay	Enter delay (in milliseconds)
Basic Video Wall Mode Change	Enter number of rows and columns and their positions
Basic Video Wall tear Adjust (microseconds)	Enter delay (in microseconds)
CEC Command	Choose a CEC command to send
CEC Bytes	Enter a CEC command (or choose from the list)

See section *SERIAL-OVER-IP MODULES > Console Commands* for a full list of commands.

Obtaining a Licence Key

Licence keys can be obtained by emailing the MAC address of your Control4 processor to drivers@justaddpower.com. Once you have received the licence key, enter it in the **Licence Key** property field. One licence key enables one serial port. To use multiple serial ports, you must obtain multiple licences.

CRESTRON JUST ADD DRIVERS SERIAL-OVER-IP MODULE

Introduction

This module is designed to control equipment via the RS232 ports on Just Add Power devices. It gives the ability to access the ports from within Crestron code as if they were on the Crestron controller itself.

This Crestron module has been tested with Just Add Power transmitter and receiver devices and was written and tested using Crestron Simpl Windows running on a CP2e Crestron Processor.

Add the module to your project

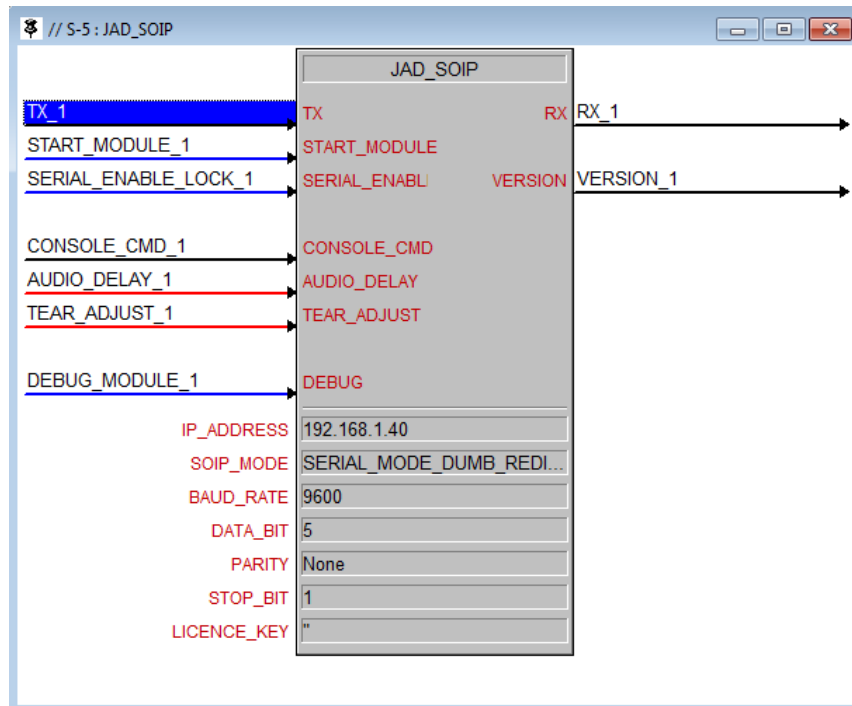
Open your Crestron Simpl Windows program. Copy the following files to the folder where your program is stored:

JAD TxRxComms v $x.yy$.umc

JAD TxRxComms v $x.yy$.ush

JAD TxRxComms v $x.yy$.usp

and then click Tools -> Reload Device and Symbol Libraries from disk. The JAP AVSwitch module will appear in your Symbol Library under Project Modules -> Switcher. The current version of the module is indicated by the v $x.yy$ suffix. Add the module to your program.



Configure Properties

Input to module

Name	Type	Explanation
TX	STRING	String that gets transmitted and comes out of the JAD serial port
START_MODULE	DIGITAL	High starts the module. This signal is used for staggering start up of multiple instances of the module to prevent resource problems within the Crestron processor that can occur. Refer to JAD_SOIP_DEMO.smw for an example.
SERIAL_ENABLE*	DIGITAL	This signal controls the serial port connection when operating in SERIAL_GUEST_MODE (it doesn't have any affect in other modes). High enables the Guest Mode socket connection and allows bi-directional communication Low disables the Guest Mode socket connection. No communication will occur. This can be used to preserve system resources when a large number of TxRxComms modules are used
CONSOLE_CMD	STRING	Sends a console command to the JAD device. See section <i>Serial-Over-IP-Modules > Console Commands</i> for a complete list of available commands.
AUDIO_DELAY	ANALOG	Used to adjust the Audio Delay setting in JustAddPower devices (refer to JustAddPower documentation for more information)
TEAR_ADJUST	ANALOG	Used to adjust the Tear Adjust setting in JustAddPower devices (refer to JustAddPower documentation for more information)
DEBUG	DIGITAL	Service only

*Only relevant to Guest Mode.

Output from module

Name	Type	Explanation
RX	STRING	String received from the serial port.
VERSION	STRING	Driver version number.

Parameter of module

Name	Type	Explanation
IP_ADDRESS	STRING	The IP address of the JAD device.
SOIP_MODE	STRING	Specifies the mode by which the module will communicate with the devices.
BAUD_RATE*	STRING	Baud rate for the JAP serial port.
DATA_BIT*	STRING	Number of data bits for the JAP serial port
PARITY*	STRING	Parity for the JAP serial port
STOP_BIT*	STRING	Baud rate for the JAP serial port
LICENCE_KEY	STRING	The licence key <i>See below "Obtaining Licence Key"</i>

*Only relevant when SOIP_MODE is set to SERIAL_GUEST_MODE, SERIAL_CLI_ACCESS_MODE or SERIAL_CLI_ACCESS_ALL_MODE.

System Resources

The Crestron processor has a finite capability for multiple simultaneous network sessions, particularly if those sessions are simultaneously trying to make connections. In some circumstances this can cause the modules to fail to operate correctly. To alleviate this problem the module does several things:-

- The module doesn't start up until it sees a rising edge on the START_MODULE signal. This allows the modules to be started in sequence, spreading the processor load. It is recommended allowing 4 seconds between start of each module.
- The module uses a telnet session for most commands (including CLI access serial). This socket connection is opened when a command needs to be send, and closed after a few seconds of inactivity. You don't need to worry about this – it happens automatically.
- The GuestMode serial connection needs a permanently open socket to allow 2-way communication. However, to allow the programmer some control over usage of system resources we have added a SERIAL_ENABLE signal that controls this socket connection. This should be held high when you wish to communicate with the serial port, and dropped low when there is no need for comms. Note that you should be careful about enabling multiple modules simultaneously.

NOTE: when operating in GuestMode it is the responsibility of the Crestron programmer to ensure appropriate TCP "keepalive" messages are sent if they wish to keep the connection open for an extended period.

Obtaining a Licence Key

The licence key will be the same licence key that you received for the main Crestron module. If you purchased the Serial-Over-IP module as a later upgrade, you will be issued with a revised licence for both drivers.

RTI JUST ADD DRIVERS SERIAL-OVER-IP MODULE

This driver enables commands to be sent over InterVLAN routes of a JustAddPower system, to be directed to the serial port on a JAP Receiver or Transmitter device.

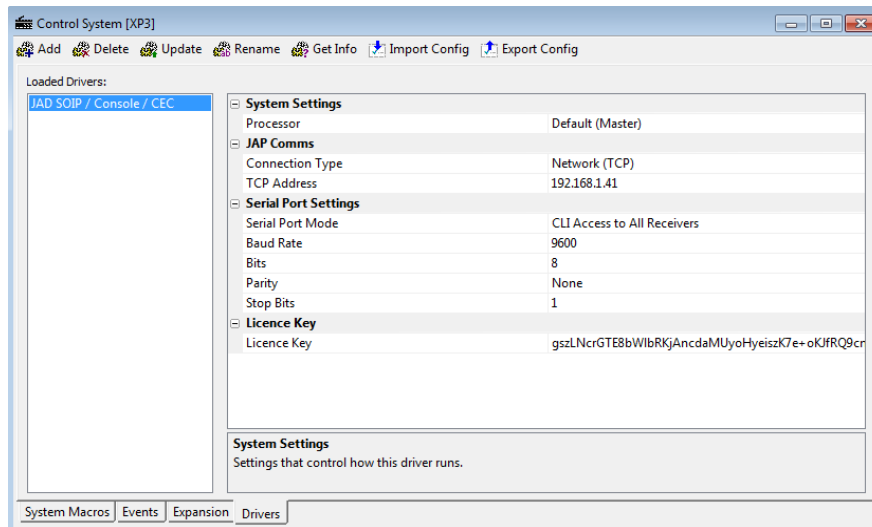
Note that the system must have been previously set up with the JustAddDrivers configuration tool to ensure that the InterVLAN routes are set-up correctly. This includes any necessary configuration of the router to ensure that a valid IP route exists between the RTI control system and the JAP VLAN.

Adding the driver to your project

Open your RTI Integration Designer System file and select your processor from the **System Workplace**.

- Click on the **Drivers** tab of the control system window and select **Add Driver**.
- In the browse window that appears, navigate to the location of the driver file on your PC (entitled *JAD_SOIP.rtiDriver*), select it and click the **Open** button.

The driver details should be displayed as below:



Configuration Settings

Processor	Choose the processor from which commands will be sent.
Connection Type	This option is set to "Network (TCP)" by default and is currently un-editable
TCP Address	Enter the IP address of the JAP device (e.g. 172.16.0.47)
Serial Port Mode	Choose the mode by which the driver will communicate with the devices.
Baud Rate	Choose the baud rate of the destination serial port
Bits	Choose the number of data bits in each character
Parity	Choose the type of parity bit to send
Stop Bits	Choose the number of stop bits to send
Licence Key	Obtain a licence key and enter it here

- Choose **Device > Save** to save your changes.

Available Commands

The below table lists all available commands. Note that, due to the nature of RTI programming interface, all commands will always be selectable but may not function depending on the Serial Port mode selected for a particular device.

Command	Description
Send Serial Command	Enter string and select destination ("single receiver" or "all receivers")
Send Console Command	Select command to send
Send Console Command (Advanced)	Enter command to send
Audio Delay	Enter delay (in milliseconds)
Basic Video Wall Mode Change	Enter number of rows and columns and their positions
Basic Video Wall tear Adjust	Enter delay (in microseconds)
Slideshow	Enter number of slides and duration per slide (in seconds)
IR Manager Control	Enter IR Bank and IR Command and choose Operation ("Learn" or "Emit")
Send CEC Command (standard)	Choose a command to send
Send CEC Command (advanced)	Enter a CEC command as HEX bytes (e.g. "0xE0 0x0C")
Set OSD Format	Set size, colour and transparency level of the OSD font
OSD On	Switch the OSD on and display the text entered
OSD Off	Switch the OSD off

NOTE: When sending serial commands, in addition to sending ASCII characters, you can also send binary characters, by escaping them with a "\x", followed by the ASCII code represented as two hex digits.

For example:

hello\x0D

....sends "hello" followed by a carriage return (ASCII code 13 = hex 0D).

Obtaining a Licence Key

The process for obtaining a licence key is the same as the RTI Switching Module as detailed in the RTI Switching Module section of this document.