

Just Add Power



IR MANAGER

Revised 2014-09-17



Table of Contents

Introduction..... 3

Physical Connectors and Indicators..... 4

 Front..... 4

 Rear 4

 DB9 Pinout – Female 4

Setup 5

For Programmers 6

 Connect to Device..... 6

 Command..... 6

 Examples 6

Introduction

Just Add Power IR Manager is a programmable, serial-controlled IR blaster

- Programmable IR blasters – read IR commands from a remote and store for later use
- 4 IR blaster ports – control 4 different devices at once
 - 32 commands for each blaster
 - 128 total programmable commands
- Split IR blaster to control multiple devices of the same make/model
- Control commands included in pre-programmed drivers from Just Add Power
- Connects to serial port of Just Add Power Transmitter or Receiver

Physical Connectors and Indicators

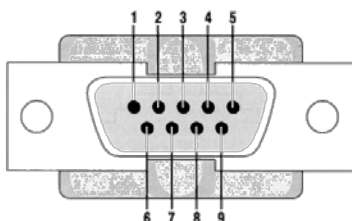
Front



Rear



DB9 Pinout – Female



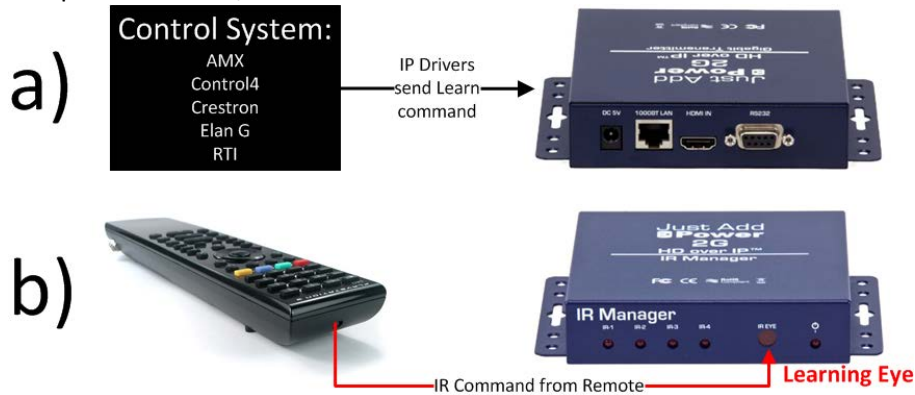
Pin	Signal
2	TX
3	RX
5	GND

Setup

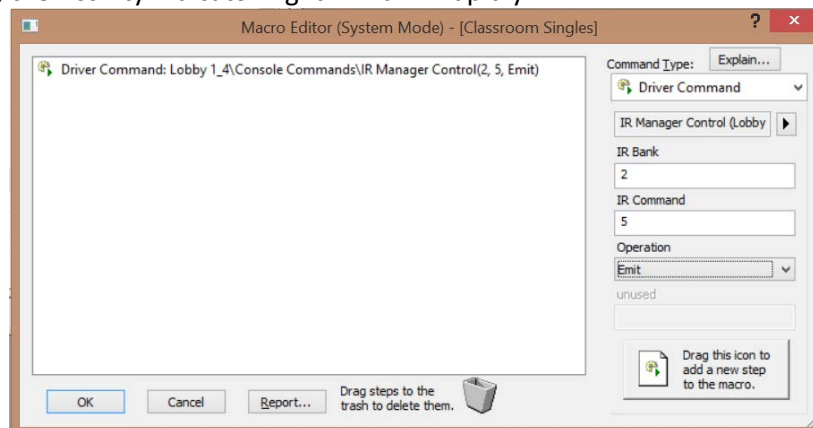
1. Connect IR Manager to a Just Add Power device with a serial cable and run IR blasters from IR Manager's location to control locations.



2. Set Just Add Power device to 9600-8n1 baud rate (this is the default setting).
3. Program IR Manager with IR codes.
 - a. Using control system, send the Learn command for a bank/command combination to the Just Add Power device that is attached to the IR Manager. The Power Light on the IR Manager will go off indicating that it is ready to learn. "IR Bank" can be 1-4, "IR Command" can be 1-32. See [For Programmers](#) section for exact commands.
 - b. Point the IR remote at the learning IR Eye on the front of the IR Manager and push the IR remote button to be learned. The Power Light on the IR Manager will blink once and turn back on indicating that it has learned.
 - c. Repeat step 2 for all bank/command combinations.



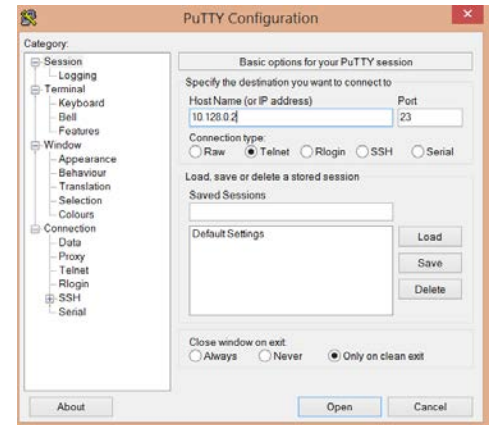
4. Program control system to send IR codes. Select bank, command, and "Emit" for code to be sent. When command is sent, the Activity Indicator Light will blink rapidly.



For Programmers

Connect to Device

- Just Add Power devices utilize the Telnet protocol (port 23)
- Open a Telnet connection to the IP of the Just Add Power device that is connected to the IR Manager using a Telnet program or a control system
- Example: Connect to a Just Add Power device at 10.128.0.2 using PuTTY



Command

```
irm.sh <IR_Bank_#> <IR_Command_#> <w/x>
```

- The command is case-sensitive. All letters **MUST** be lowercase.
- <IR_Bank_#> is a variable with the values 1-4, specifying the IR Bank that is being used.
- <IR_Command_#> is a variable with the values 1-32, specifying which command in that IR Bank will be accessed
- 'w' or 'x' must be specified for whether the command is being learned (w) or being executed (x). Must be lowercase.
- When the learn command is sent, the Power Light will go off. Point the remote at the IR Eye and hit the desired button to be learned. If successful, the Power Light will blink once and turn on solid.
- If an execute command is given to a bank with a command stored, the light associated with that IR Bank will flash rapidly to show the command is being sent.
- If an execute command is given to a bank **without** a command stored, the Power Light and the light associated with that IR Bank will flash slowly.

Examples

1. To teach an IR command to bank 3, command 32 send:

```
irm.sh 3 32 w
```

When the command is sent, the Power Light will go off indicating that it is ready to learn. Point the remote at the IR Eye and hit the button that is to be learned. The Power Light will blink once and go back on once the command is learned.

2. To send the IR command previously taught to bank 3, command 32 send:

```
irm.sh 3 32 x
```

When the command is sent, the light associated with that IR Bank will flash rapidly.