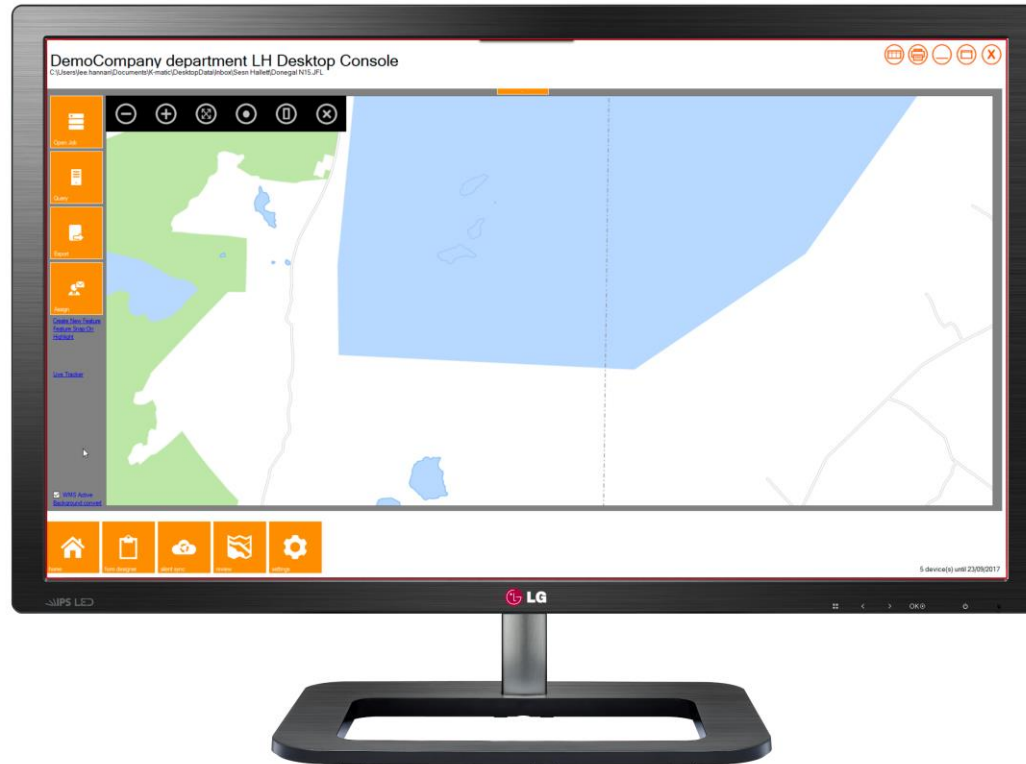


Background Mapping



Background Mapping

Background mapping must be converted to display in K-console and K-mobile.

Background mapping when converted will store in your OS Data. Location of folder is displayed in the Setting Tab on K-console.

Create an “**OS Data**” Folder if there is none.

Location of Mapping Folder

The screenshot displays the 'General Settings (v 3.3.5)' window. On the left is a sidebar with icons for General, Users, Exchange, and GPS. The main area is divided into several sections:

- General Settings (v 3.3.5):**
 - Company: DemoCompany!AG
 - Private Key: [Empty field] [Request Key](#)
 - Administrator email: [Empty field]
 - Alternative tracking server: [Empty field]
 - ☐ K-Console login required ☒ Full Screen
 - ☐ Use K-Cloud for Synchronisation
 - Check interval (mins): 5
 - ☒ Use Active Sync for Synchronisation
 - ☐ Viewer Mode ☐ Disable Retrieve ☐ Disable cloud services
- Optional Alternative Folder Management:**
 - DesktopData folder: [Empty field]
 - Form Storage: [Empty field]
 - Export folder: [Empty field]
 - Image Library: [Empty field]
 - Mapping Folder: C:\OS Data (highlighted with an orange arrow)
 - Installation Folder: _84850a749a06a_0003.0003_1fb93857174d00e3
 - ☐ Allow Publishing ☐ Host images online
- Application Addons:**
 - [Sample Data Sets](#)
 - [Additional OS Data sets](#)
 - [Additional Coordinate System Management](#)
 - [Microsoft Access Runtimes](#)
 - Access On Screen Keyboard ☐
 - [Secure app update Download](#)
- Server Mode Settings:**
 - Admin email: [Empty field]
 - Email when job received ☒
 - Email when completed job received ☒
 - Server Mode ☐
 - IIS Mode Active ☐
 - IIS Root Folder: [Empty field]
 - Server URL (ex): [Empty field]
 - Web Metrics: [Empty field]

An orange arrow points from the text 'Location of Mapping Folder' to the 'Mapping Folder' field in the 'Optional Alternative Folder Management' section.

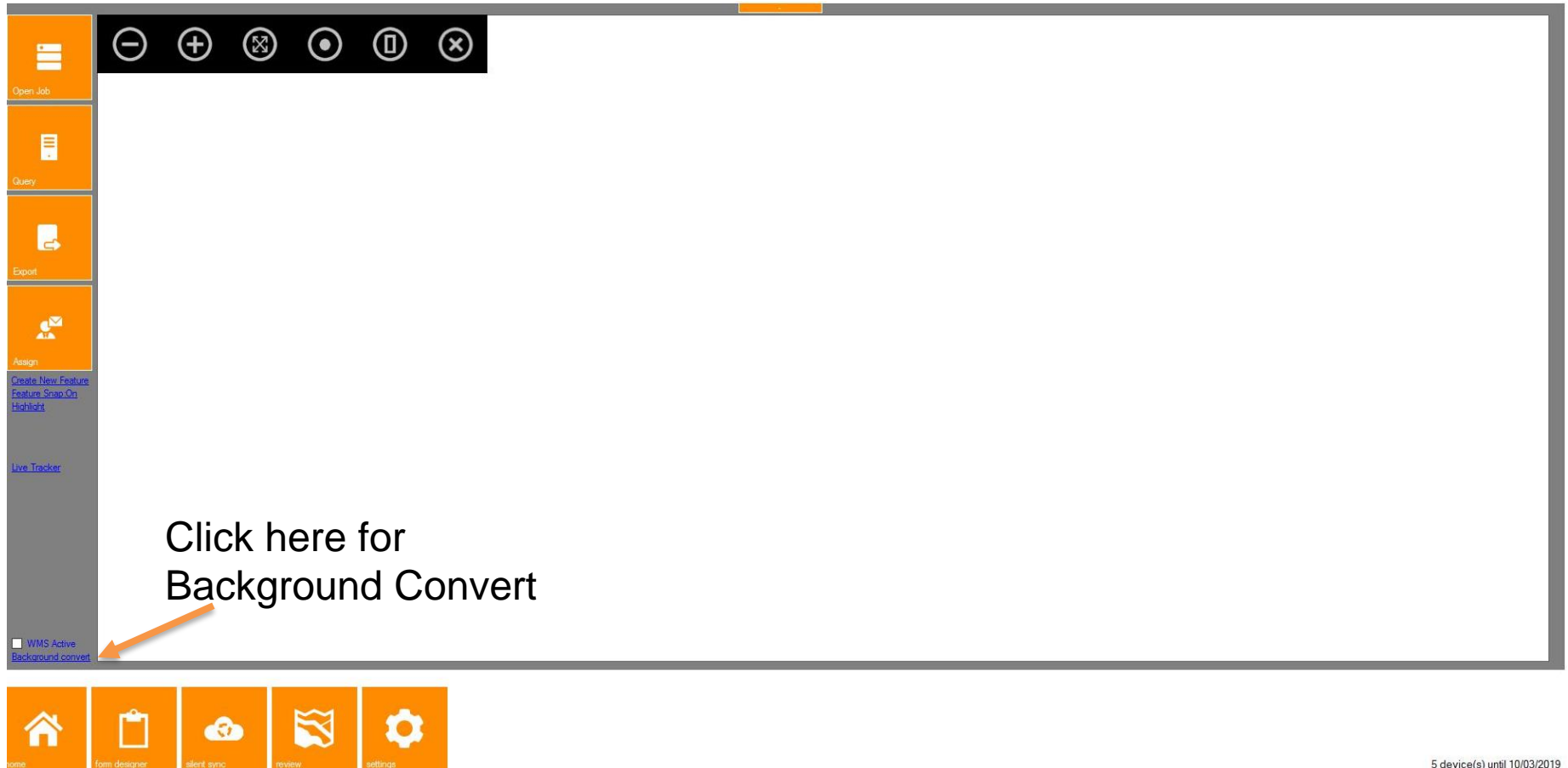
Save Settings



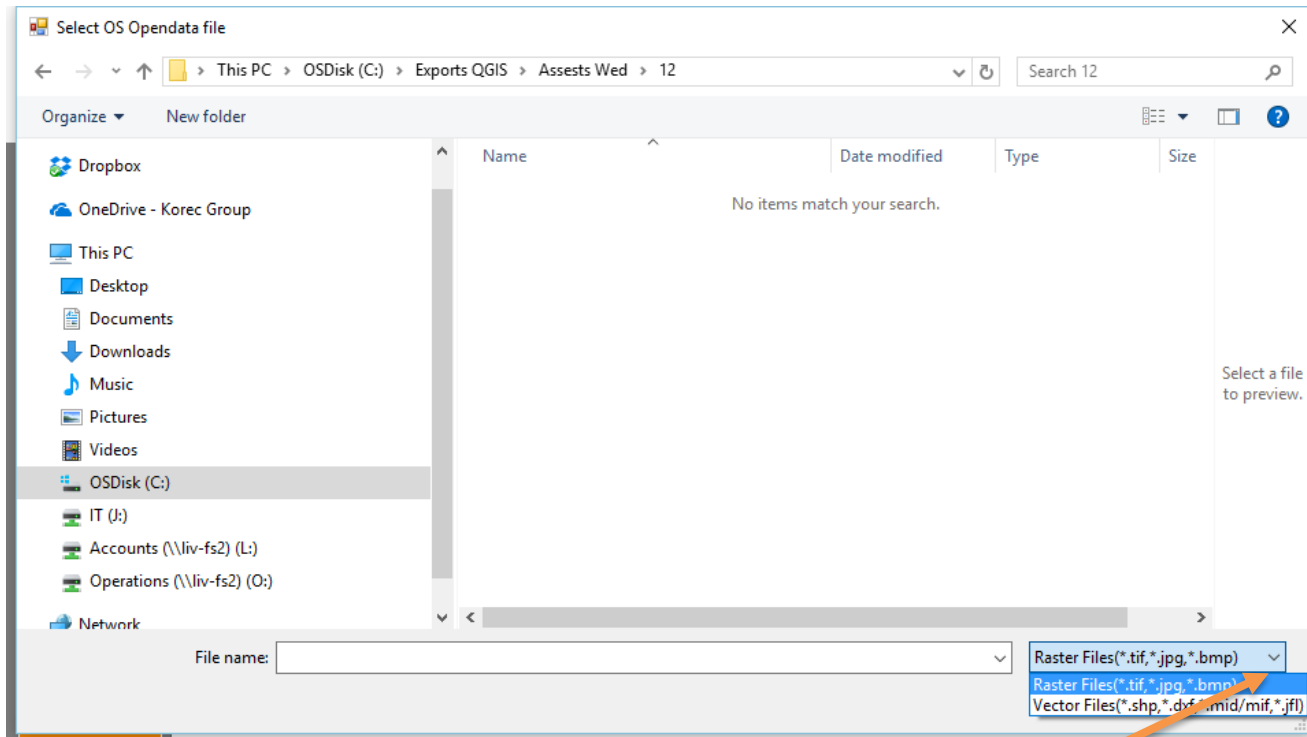
File types

- Raster (JPG, TIF OR BMP) needs to have the corresponding TFW/JGW world file.
- Vector (SHP, DXF, MID/MIF, JFL).

Review Screen – Background Convert

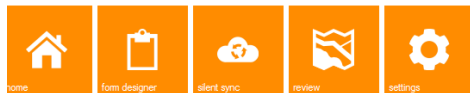
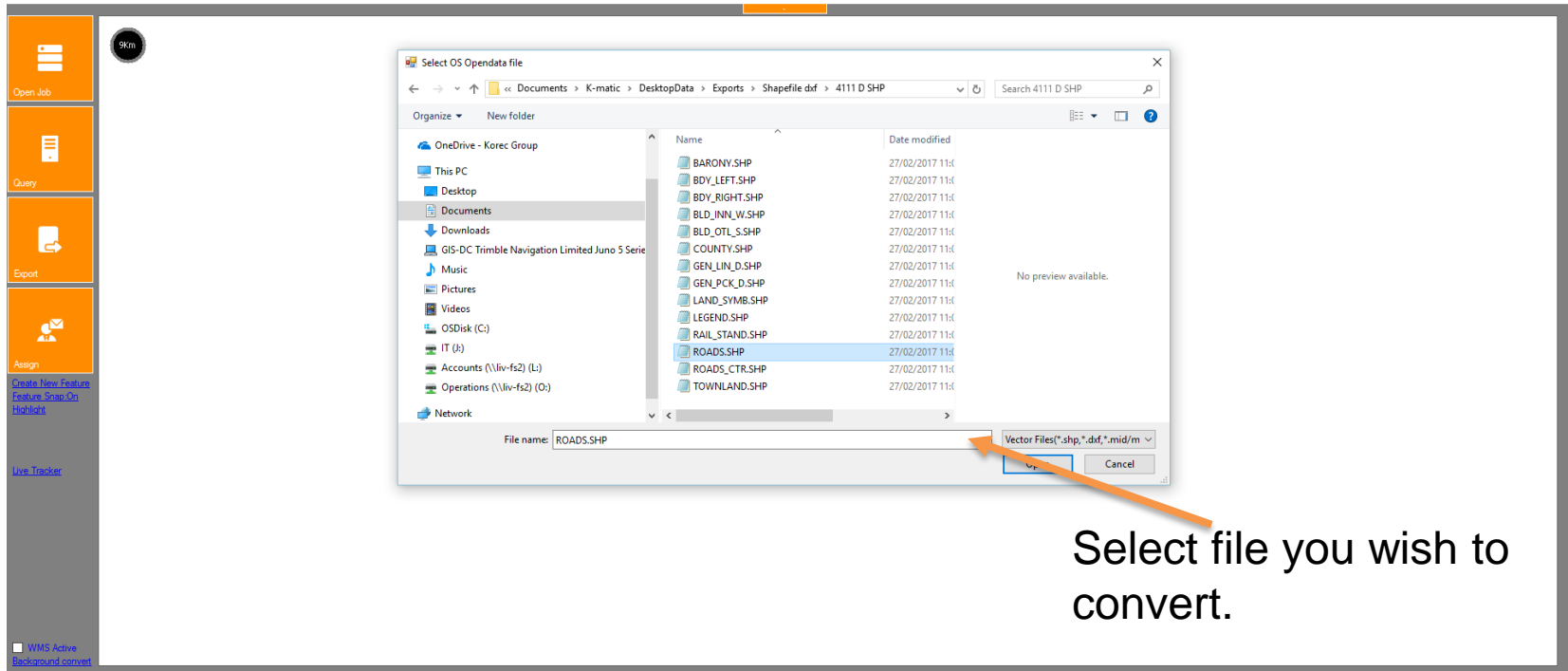


Background Convert



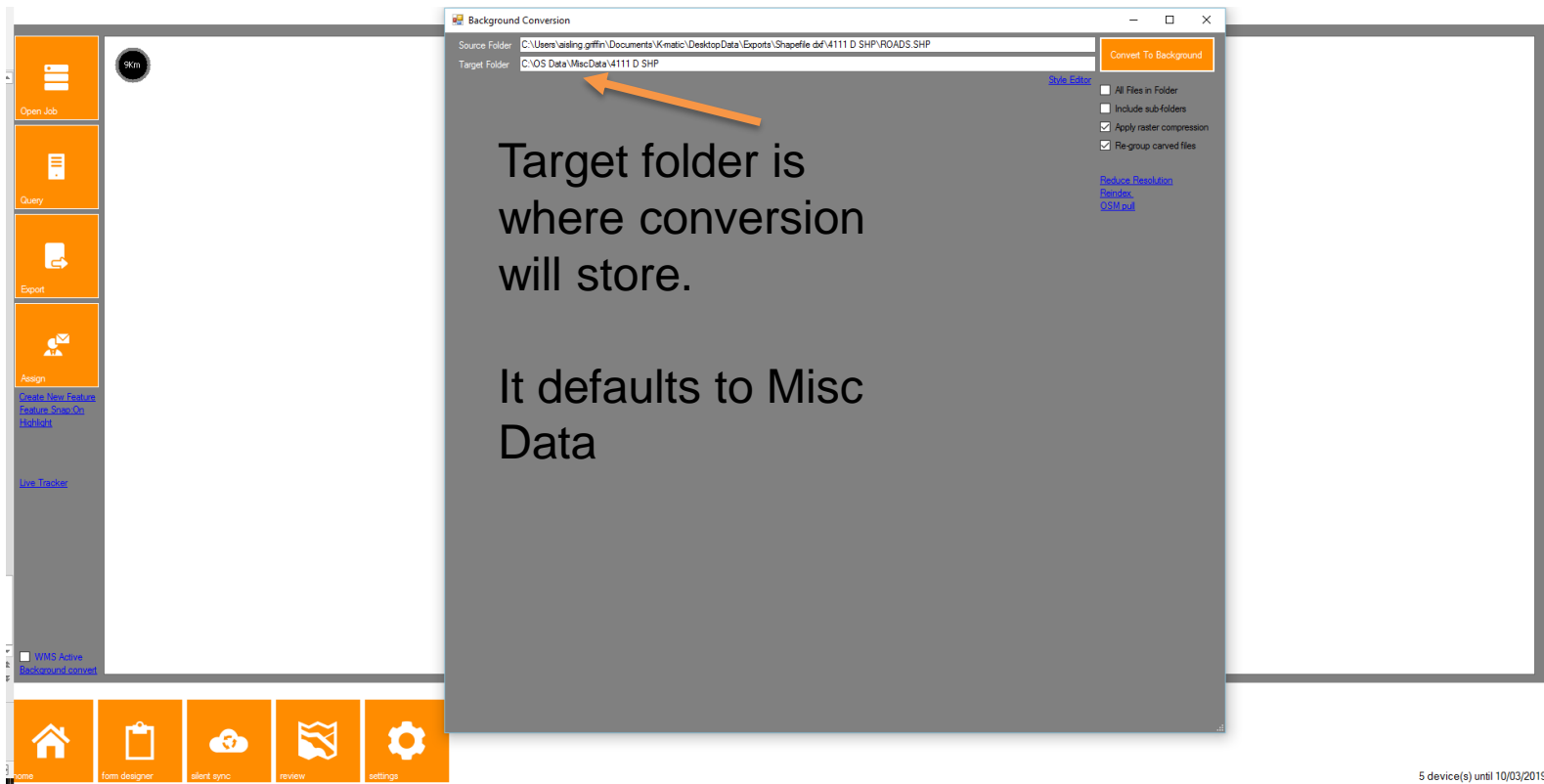
It Defaults to Raster Files.
Use the down arrow to Select
Vector Files

Background Convert

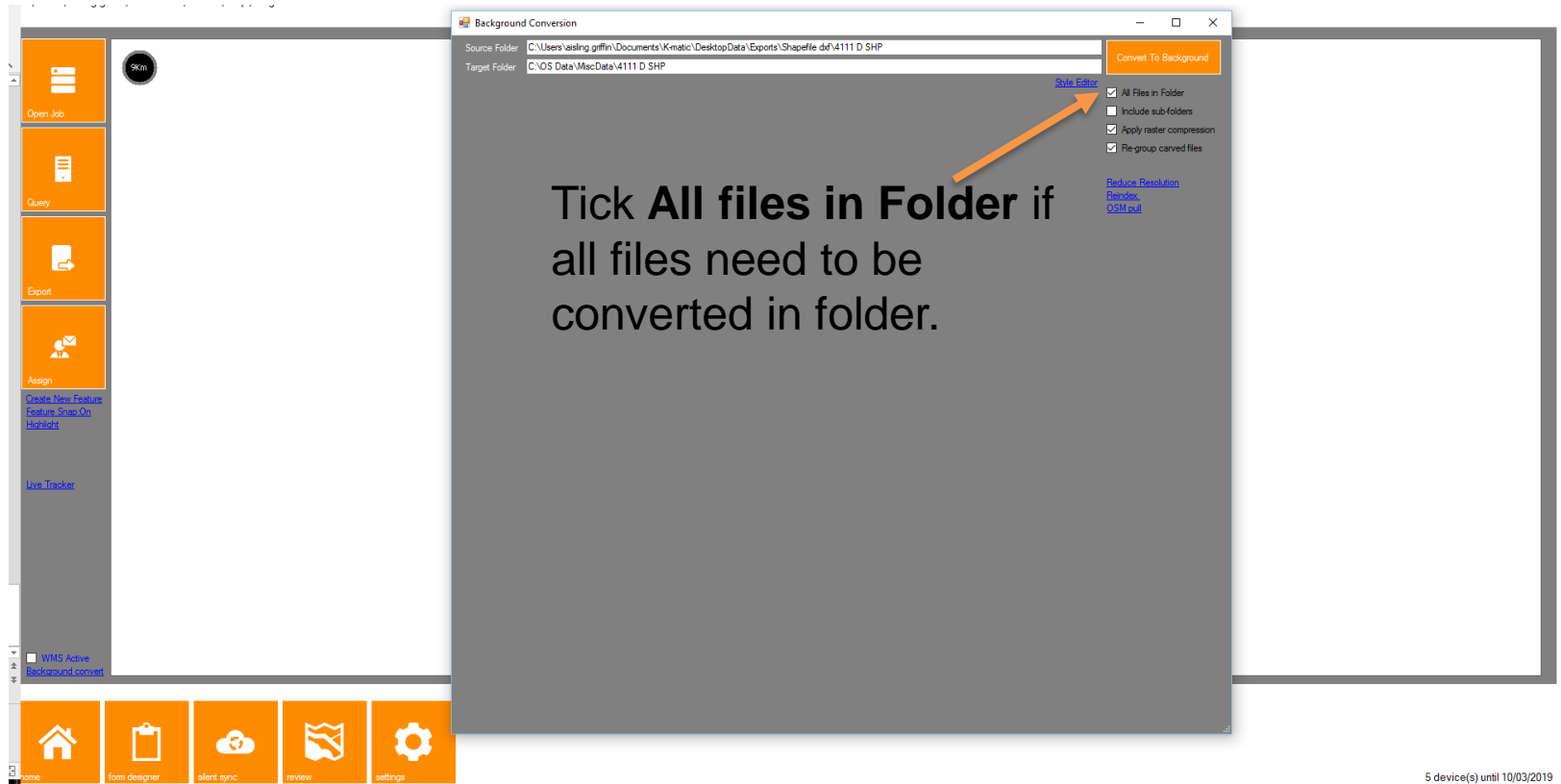


5 device(s) until 10/03/2019

Background Convert



Background Convert



5 device(s) until 10/03/2019

Background Convert

DemoCompany department AG Desktop Console

C:\Users\aisling.griffin\Documents\K-matic\temp\Drag-636251682819893930.JFL



9Km

Open Job

Query

Export

Assign

[Create New Feature](#)
[Feature Snap On](#)
[Highlight](#)

[Live Tracker](#)

☐ WMS Active
[Background convert](#)

Background Conversion

Source Folder: C:\Users\aisling.griffin\Documents\K-matic\DesktopData\Exports\Shapefile dxf\4111 D SHP

Target Folder: C:\OS Data\Roads SHP

Convert To Background

☒ All Files in Folder
☐ Include sub-folders
☒ Apply raster compression
☒ Re-group carved files

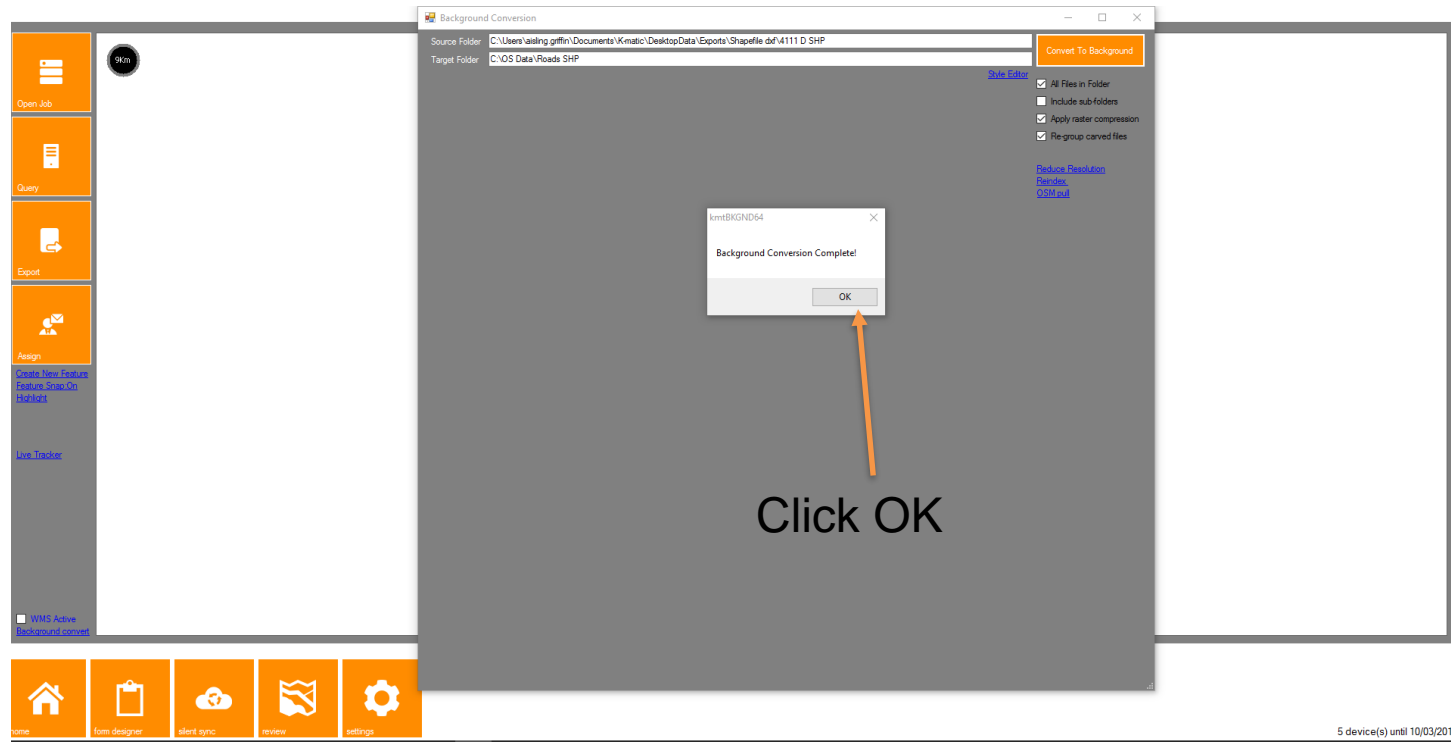
[Reduce Resolution](#)
[Reindex](#)
[OSM pull](#)

Click Convert To Background

home form designer silent sync review settings

5 device(s) until 10/03/2019

Background Convert



Background Convert

DemoCompany department AG Desktop Console
C:\Users\aisling.griffin\Documents\K-matic\temp\Drag~636251682819893930.JFL

9km

Click on the Scale Indicator

Open Job
Query
Export
Assign
[Create New Feature](#)
[Feature Snap On](#)
[History](#)
[Live Tracker](#)
WMS Active
Background convert

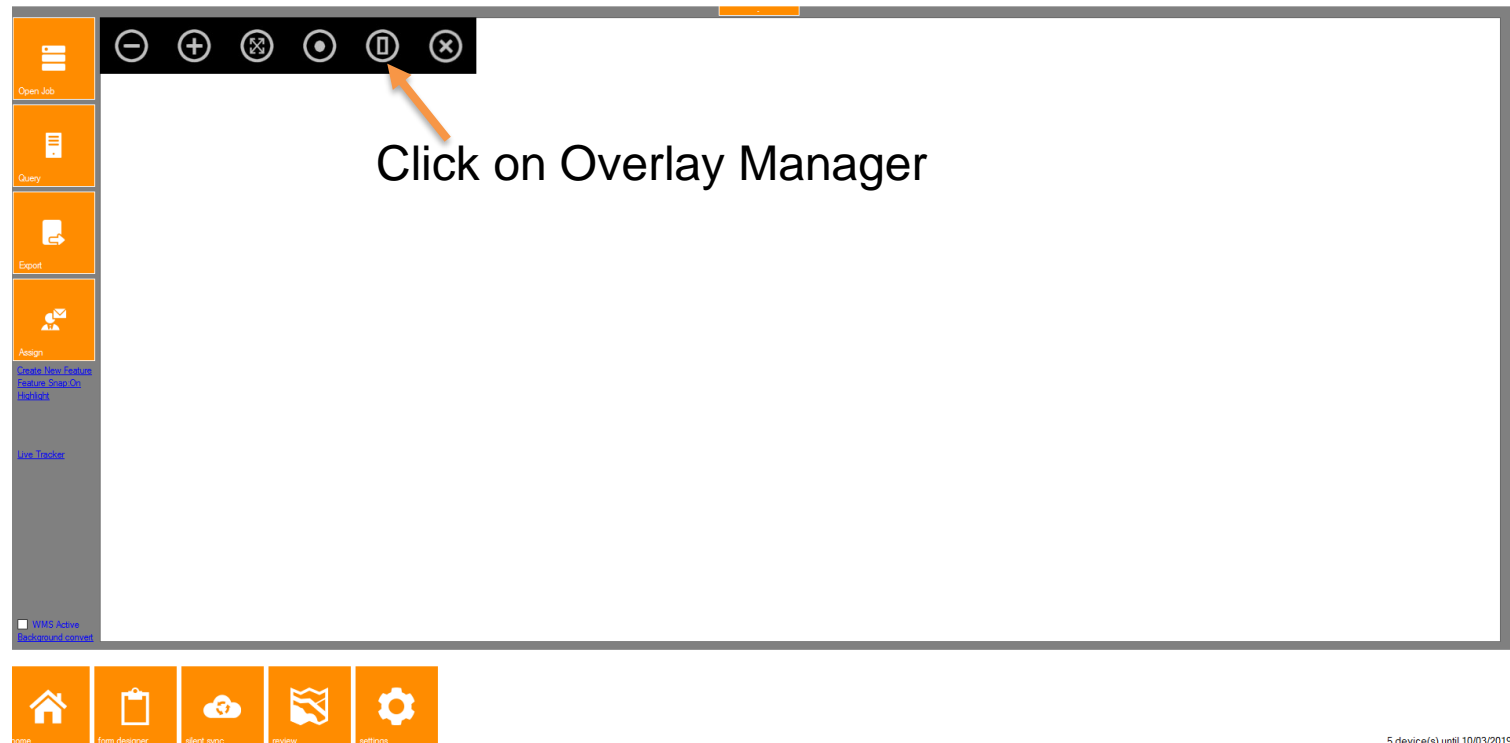
Home
form designer
alert sync
review
settings

5 device(s) until 10/03/2019

Background Convert

DemoCompany department AG Desktop Console

C:\Users\aisling.griffin\Documents\K-matic\temp\Drag~636251682819893930_JFL



Background Convert

DemoCompany department AG Desktop Console
C:\Users\aisling.griffin\Documents\K-matic\temp\Drag~636251682819893930_JFL

Overlay Manager

Overlay Name	5	4	3	2	1
BingMap Tiles					
WMS1-Open StreetMap					
WMS2-Open StreetMap					
WMS3-Open StreetMap					
WMS4-Open StreetMap					
WMS5-Open StreetMap					
Roads SHP	#	#	#	#	#

Cancel Zoom Accept

Double Click on Required Layer. The # symbols will appear to show layer is on.

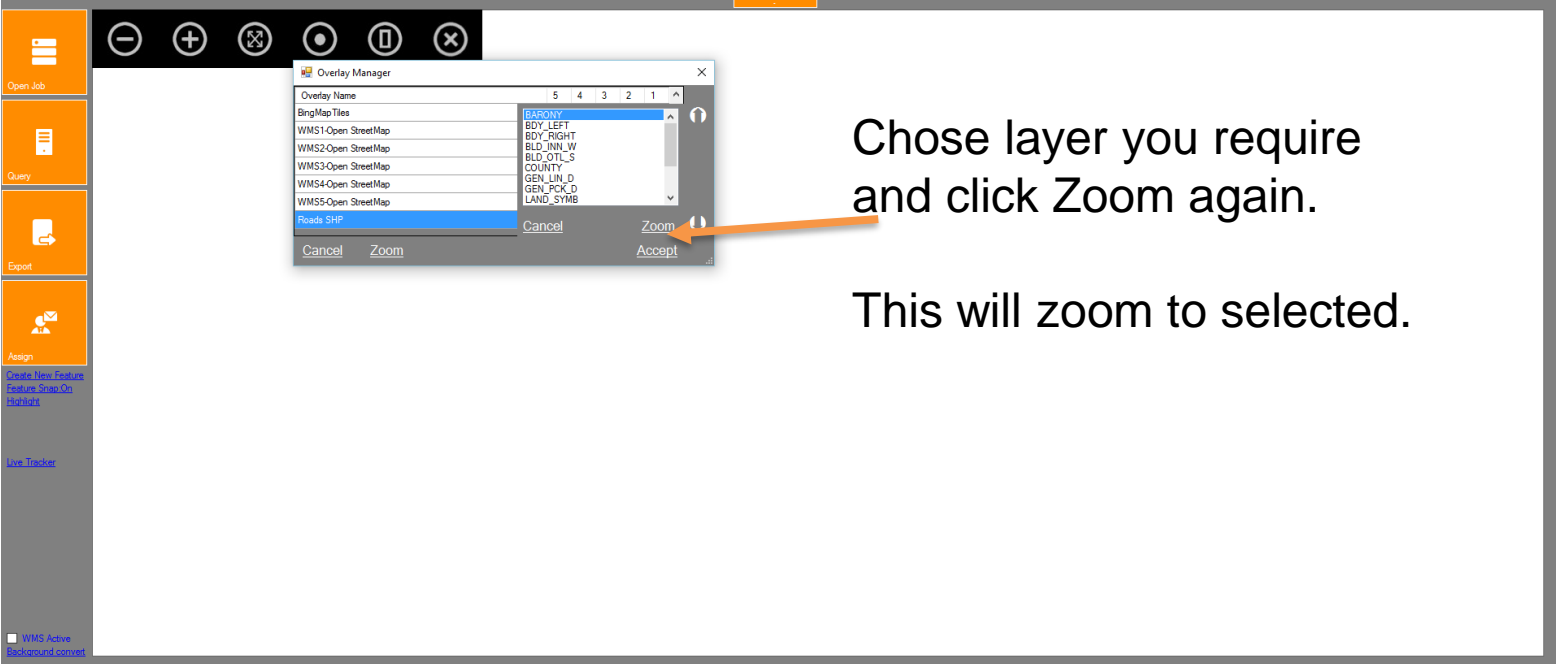
Click Zoom

Home | Layers | Recent | Map | Settings

© K-matic AG 2019

Background Convert

DemoCompany department AG Desktop Console
C:\Users\aisling.griffin\Documents\K-matic\temp\Drag~636251682819893930.JFL



Chose layer you require and click Zoom again.

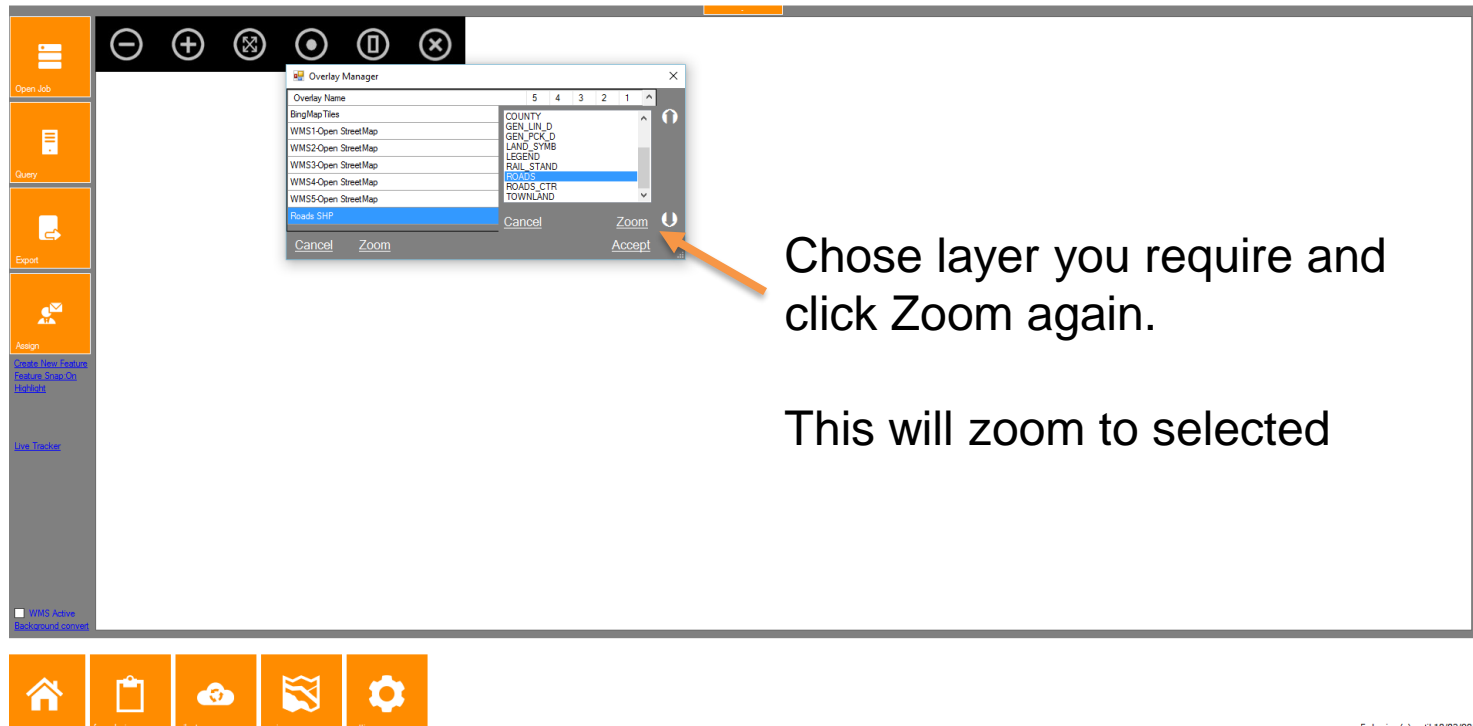
This will zoom to selected.

5 device(s) until 10/03/2019

Background Convert

DemoCompany department AG Desktop Console

C:\Users\jaising.griffin\Documents\K-matic\temp\Drag~636251682819893930.JFL



Chose layer you require and click Zoom again.

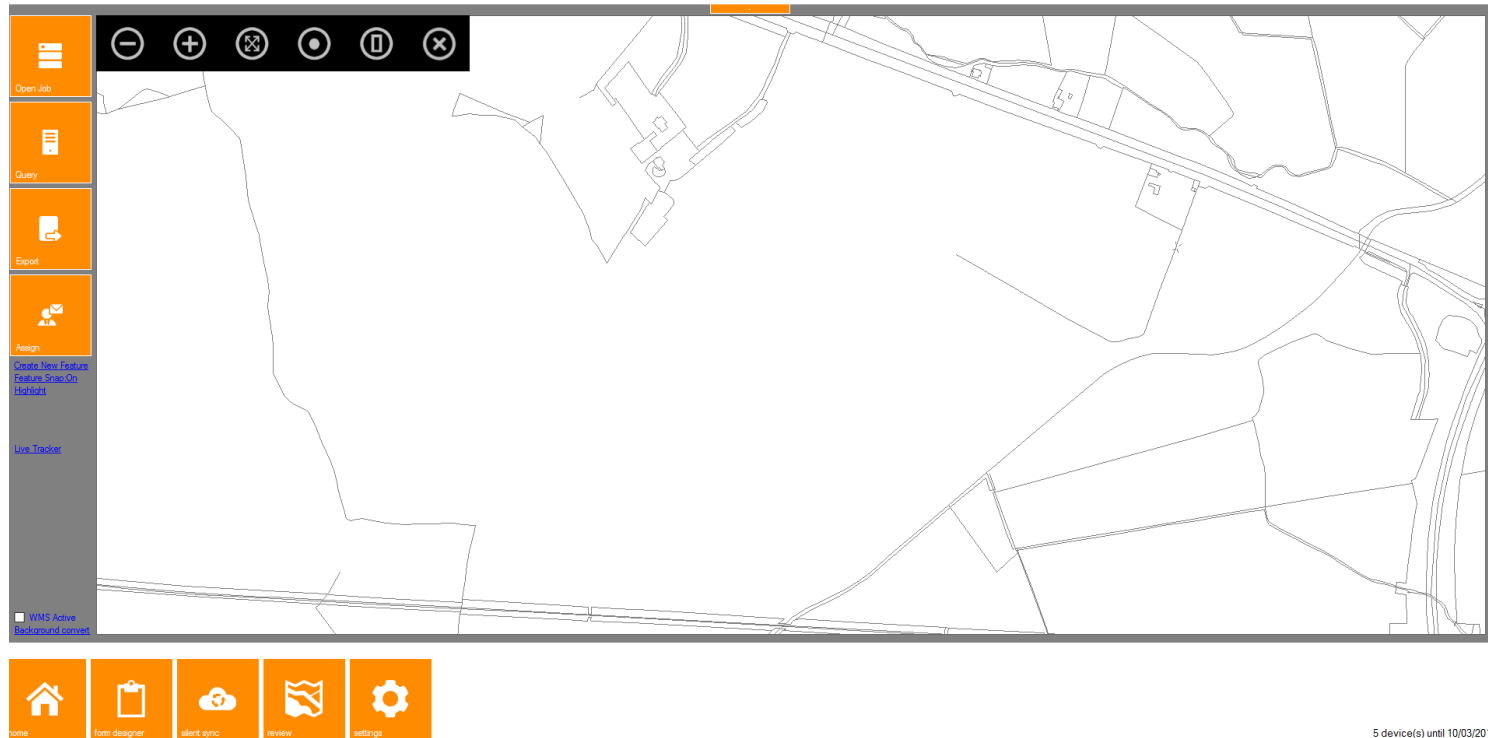
This will zoom to selected

5.4.0 (virel) until 10/03/2019

Background Convert

DemoCompany department AG Desktop Console

C:\Users\aisling.griffin\Documents\K-matic\temp\IDrag~636251682819893930.JFL



The Mapping will now
Display on K-console.

Background Mapping in K-Mobile

Connect your device to Pc through windows mobile device centre.

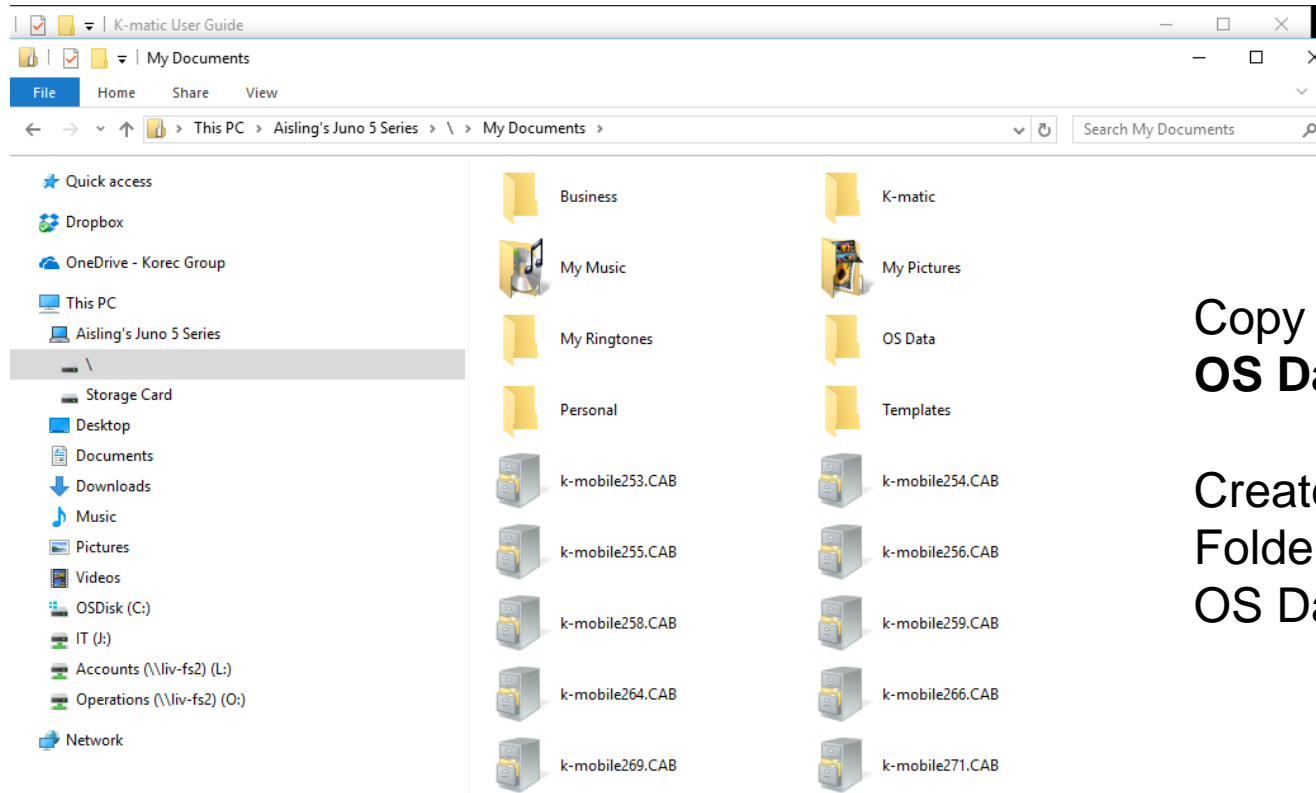


Copy Folder From Mapping Folder

OS Data				
	Name	Date modified	Type	Size
	Ardagullion	26/07/2016 10:19	File folder	
	BingMapTiles	14/03/2017 09:28	File folder	
	Business Park Road	20/07/2016 08:20	File folder	
	Conversion	13/03/2017 14:55	File folder	
	MiscData	13/03/2017 14:02	File folder	
	Roads SHP	15/03/2017 09:54	File folder	
	shapefile	16/01/2017 16:31	File folder	
	WMS1-Open StreetMap	14/03/2017 10:08	File folder	
	WMS2-Open StreetMap	14/03/2017 10:08	File folder	
	WMS3-Open StreetMap	14/03/2017 10:08	File folder	
	WMS4-Open StreetMap	14/03/2017 10:08	File folder	
	WMS5-Open StreetMap	14/03/2017 10:08	File folder	

Copy your converted File
from your PC

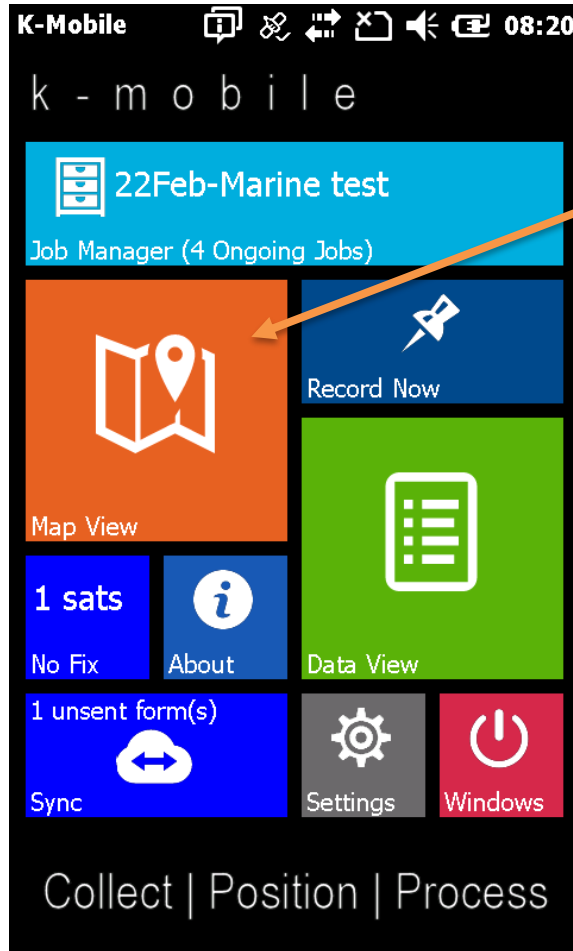
K-mobile



Copy your Files in
OS Data.

Create the **OS Data**
Folder if there is no
OS Data folder.

On Device Launch K-mobile



Click on Map view

Map View



Click on Scale Bar



<0m>



Map View



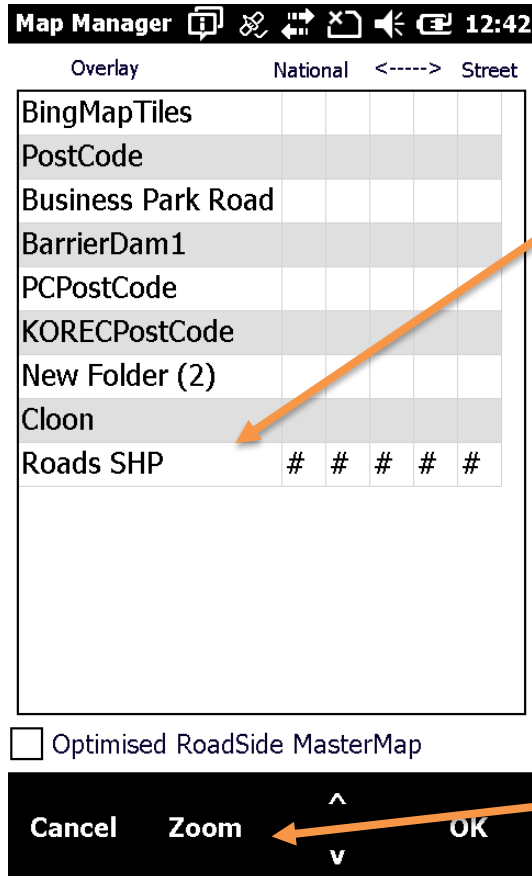
Click on Map Manager



<0m>



Map View

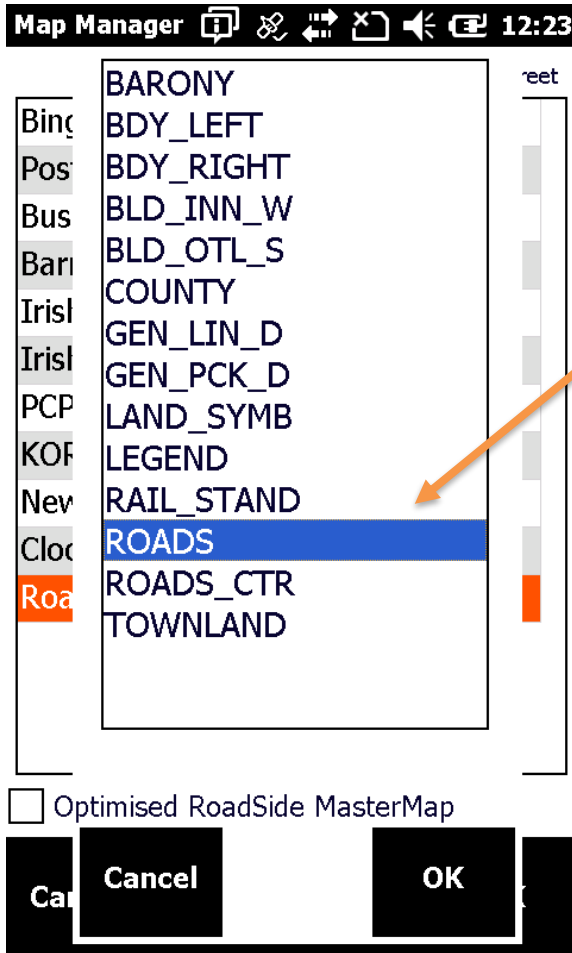


Double Click on Layer you Require.

The # symbol will appear when selected.

Click Zoom

Map View



Click on layer and click
OK.

Map View



The Background Map is now displaying.

