

User Guide

K-Matic Office & Field Software Background Map from TIF/JPG



Version 1.0.2

June 2016





Legal Notices

K-Matic
Blundellsands House,
34-44 Mersey View,
Brighton le Sands,
Liverpool,
L22 6QB, UK
www.K-Matic.com

Copyright and trademarks

© 2015-2016, K-Matic Limited. All rights reserved.

K-Matic & the K logo are trademarks of K-Matic Limited, registered in the UK and in other countries.

Microsoft, Access, SQL Server, and Windows, and Windows are registered trademarks or trademarks of Microsoft Corporation in the United States and/or other countries.

All other trademarks are the property of their respective owners.

End user license agreement

IMPORTANT, PLEASE READ THE EULA AT THE END OF THIS MANUAL.

Table of Contents

PREFACE.....	4
SYSTEM REQUIREMENTS	ERROR! BOOKMARK NOT DEFINED.4
CREATING A RASTER BACKGROUND MAP FROM A TIF OR JPG IMAGE.....	5

Preface

This User Guide describes how to create a raster background map from a TIF or JPG image. This guide is primarily written for users and administrators who are familiar with the systems they are working with.

System Requirements

Microsoft Windows

- Windows 7, Windows 8, Windows 10
- Windows Mobile Device Center
- 256 MB RAM (512 MB RAM recommended)
- At least 250 MB available disk space
- 1024 x 768 or high resolution with at least 256

K-matic Software

- Latest version of K-console available for download at <http://m.k-matic.com/apps/k-console/publish.htm>
- Latest version of K-mobile available for download at <http://m.k-matic.com/apps/>

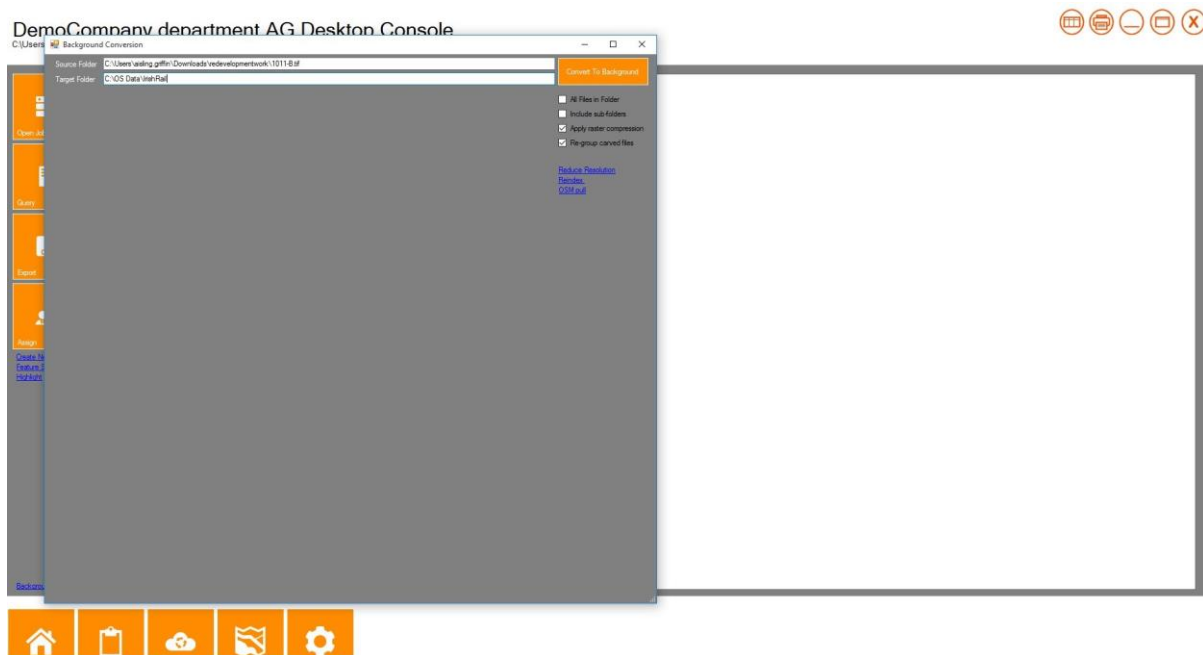
Create a raster background map from a TIF / JPG Image

Conversion of TIF / JPG options to the format used by K-Mobile is very straightforward, please ensure that each TIF / JPG file is accompanied by the corresponding TFW/JGW world file.

In the Review Tab of K-Console Click the Background Convert Button (located in bottom left of screen) and select the single TIF or JPG file,



Before the Convert to Background Convert button is clicked, make sure the appropriate settings are setup.



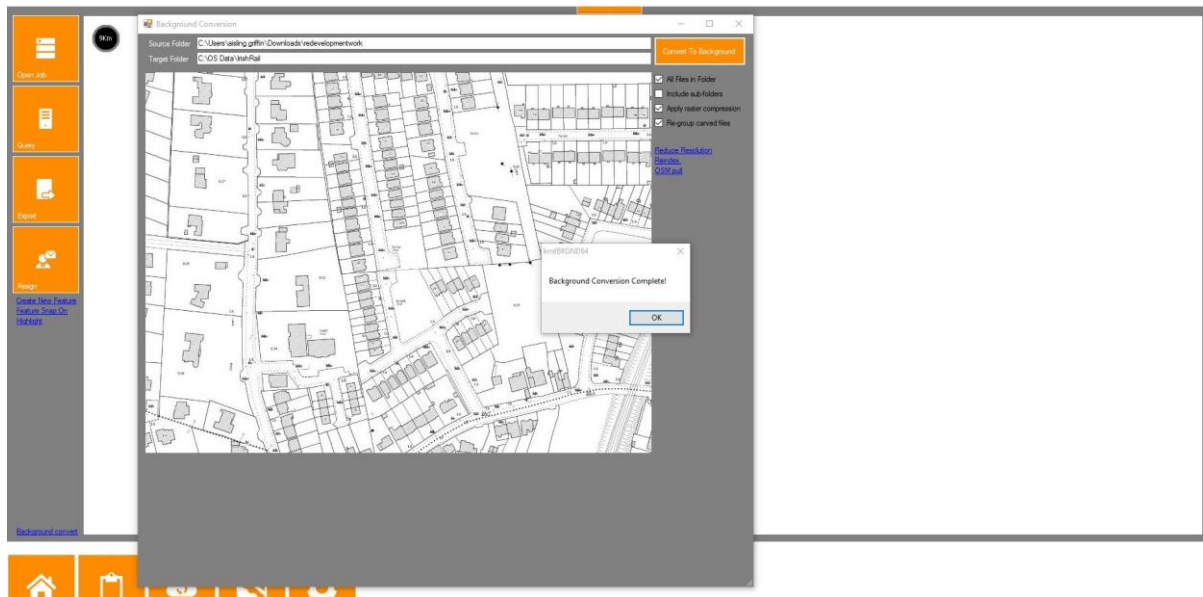
The target folder is the mapping folder where the conversion is stored. Create a new folder for conversion. In this example Irish Rail is given to folder

Untick 'All Files in Folder' and untick 'Include Sub-Folder'

Click the Convert To Background Button

DemoCompany department AG Desktop Console

C:\Users\jarsling.griffin\OneDrive for Business\Documents\K-matic\temp\Drag\636020103031968544_JFL

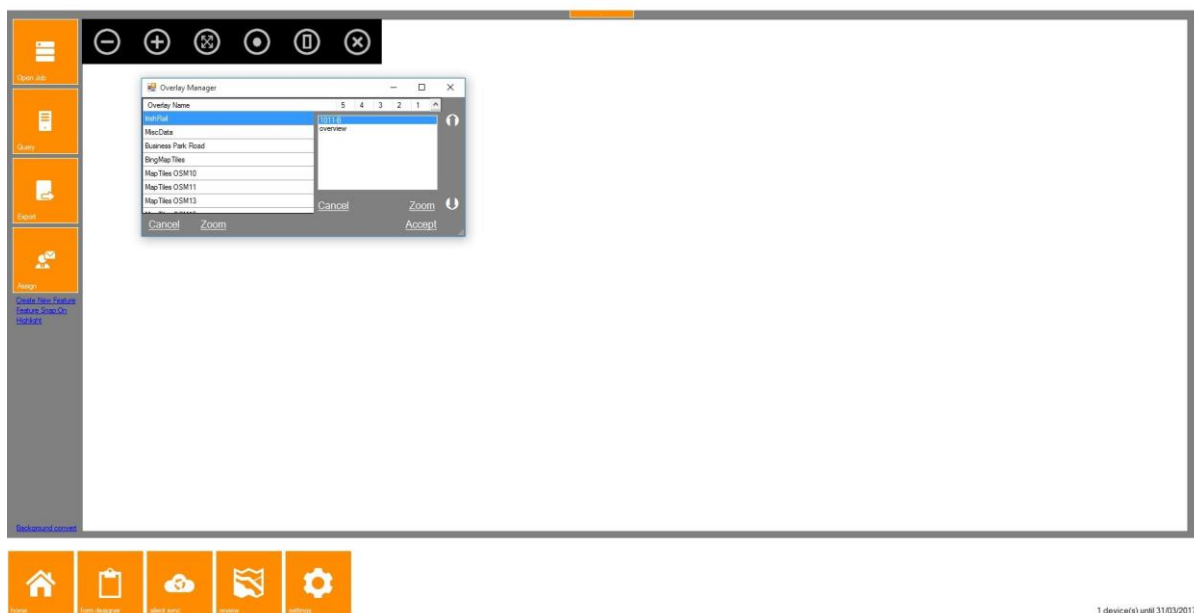


Click OK

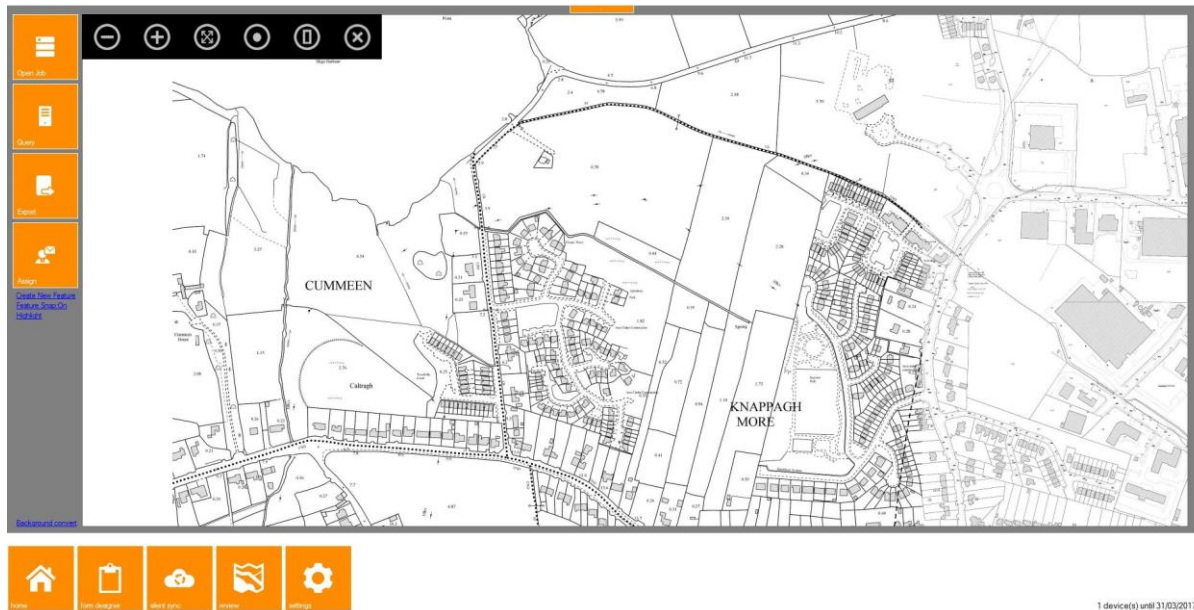
In the Review Screen Navigate to the Overlay Manager and Click on the Irish Rail Folder and Click Zoom. Click on the file and click Accept

DemoCompany department AG Desktop Console

C:\Users\jarsling.griffin\OneDrive for Business\Documents\K-matic\temp\Drag\636020103031968544_JFL



Zoom in or out to refresh Screen.



To place this back ground mapping on your device. Manually put the Irish Rail Folder onto your Device in the OS Folder. To display on device navigate to Overlay manager and click on the Irish Rail Folder.

