



Transferring a Form to K-Mobile & Retrieving Data Via Cloud or Via USB Cable

USB Cable Transfer of Forms

You will need **Windows Mobile Device Centre** for this method



Plug your Trimble device into your desktop PC with the supplied USB cable and ensure that Windows Mobile Device Centre (or ActiveSync) detects and recognises your device.

From the **Silent Sync tab**, **Click Send**

Click **Yes** to the Send to Connected Device.

Any changes made to the Forms will be detected and transferred to the device.

Cloud Transfer of Forms

Use the **Form Designer** to make a simple change to one of your forms

Click **'Publish to cloud'** from the **'Forms Designer'** tab

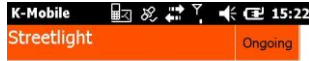
At this stage you may be prompted to transfer just forms that you have changed. Click **No** to that. So that you can respond **'Yes'** to the Send All Forms question.

The Publish to Cloud button, will be a progress update and a **final Success** message, as forms are sent to the cloud.

Retrieving Data from K-Mobile to PC Wirelessly & USB Cable

When you are finished recording data go to **Job Manager**.

Select the Job you are working on, click **finish** and click **Finish & Queue**.



Retrieving Data Wirelessly

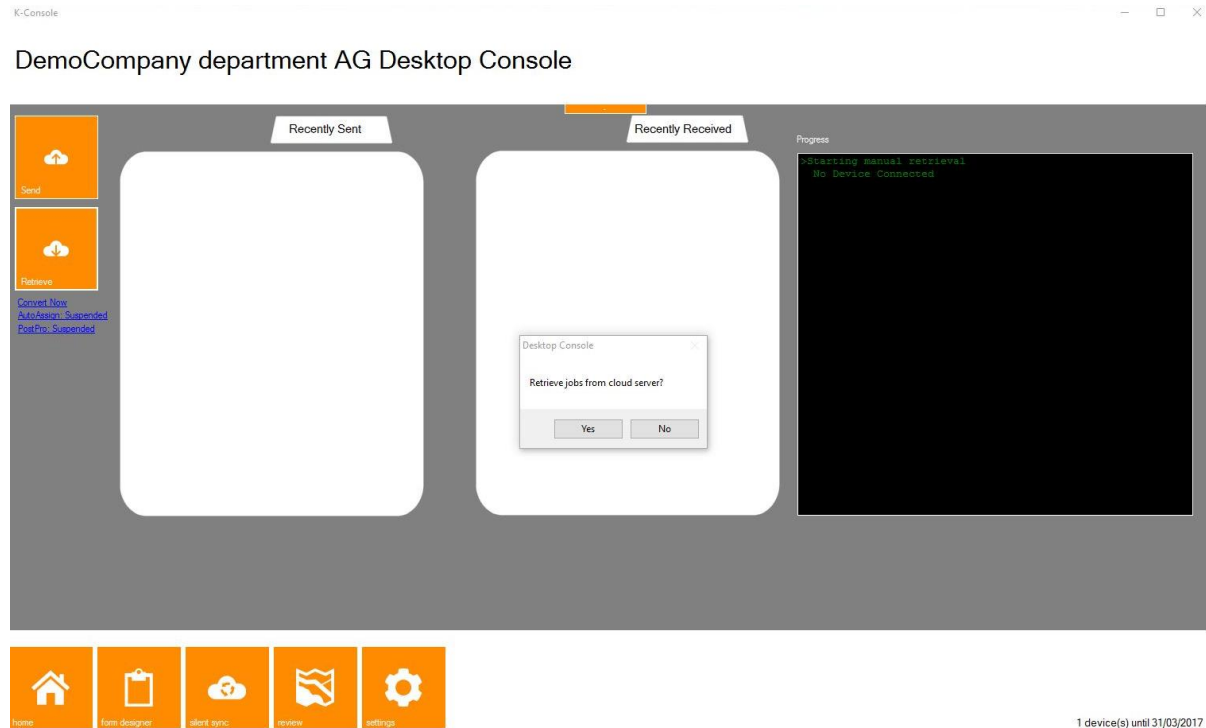
In **K-mobile** ensure that in the Settings > Admin Section > Office sync method is set to one of the two options

- Via Cloud-Complete Job
- Via Cloud-Change Only

Tap the **Sync** button to send the Job you have finished.

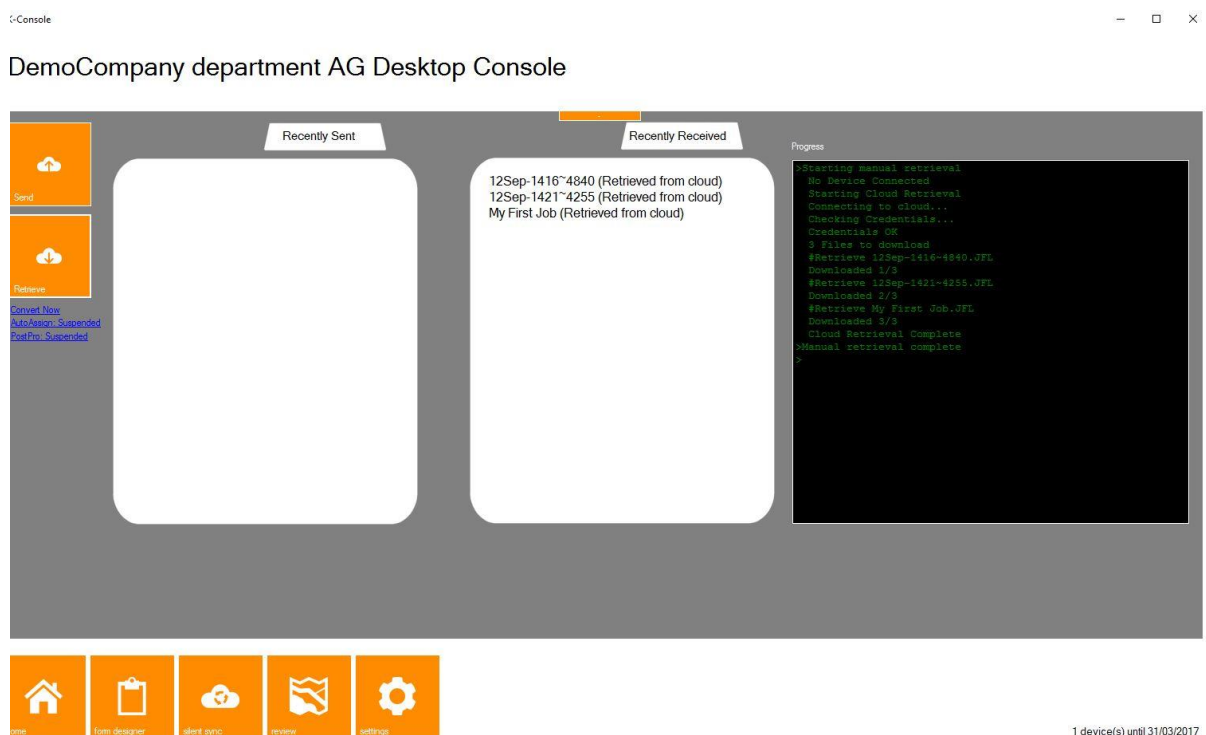


In K-console go to **Silent Sync** and click **Retrieve**.



Click Yes to **Retrieve** Jobs from Cloud Server.

In Recently Received you will see the Job name with Retrieved from cloud next to it.



Retrieving Data Via USB Cable

In **K-mobile** ensure that in the Settings > Admin Section > Office sync method is set to one of the two options

- Direct-Complete Job
- Direct Change Only

Plug in your device via a USB cable to your PC.

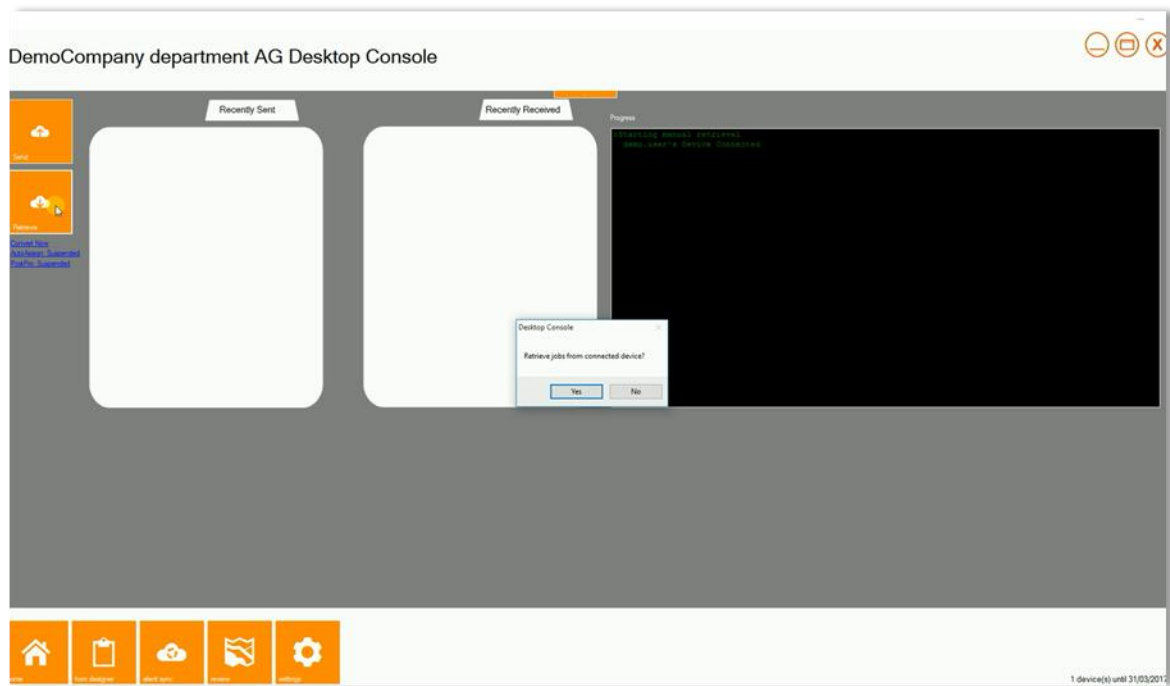
Use the Sync button to copy the Job to the correct folder. A message “Copied to Outbox” will appear.

The retrieve data is done via **K-Console**, nothing is pressed on the device.

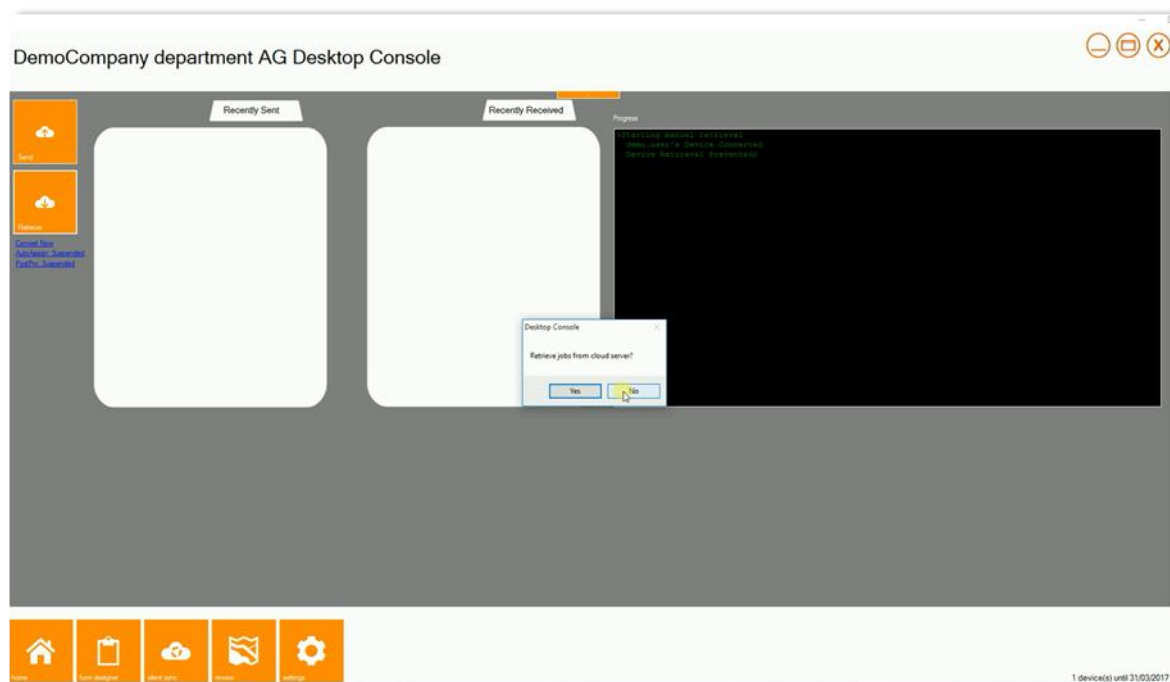
In **K-Console** click on the **Silent Sync** tab and click **Retrieve**.



Click on **Yes** to retrieve jobs from connected device



Click **Yes** to Retrieve Jobs from Connected Device.



Click on **No** to retrieve jobs from cloud server.

