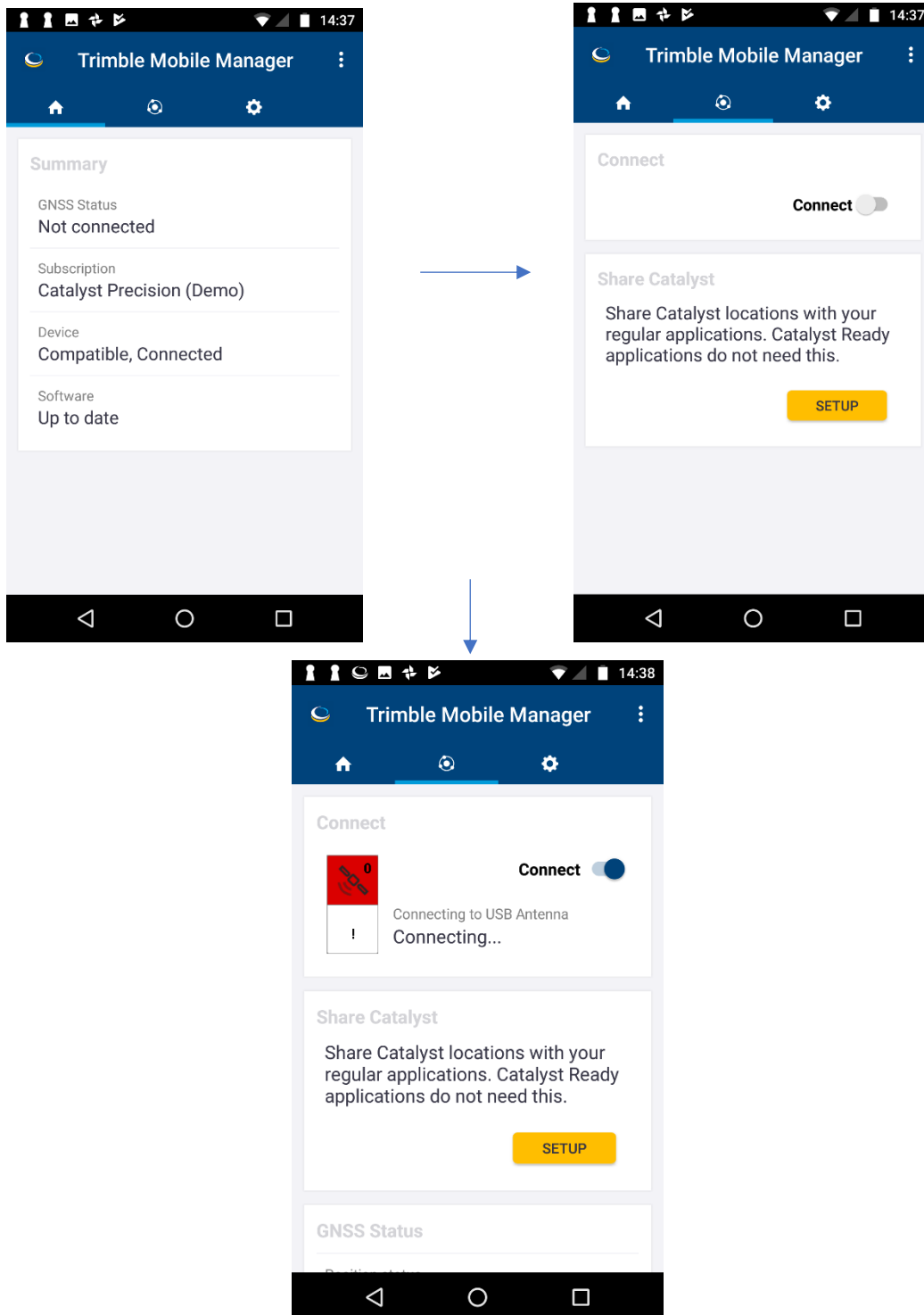
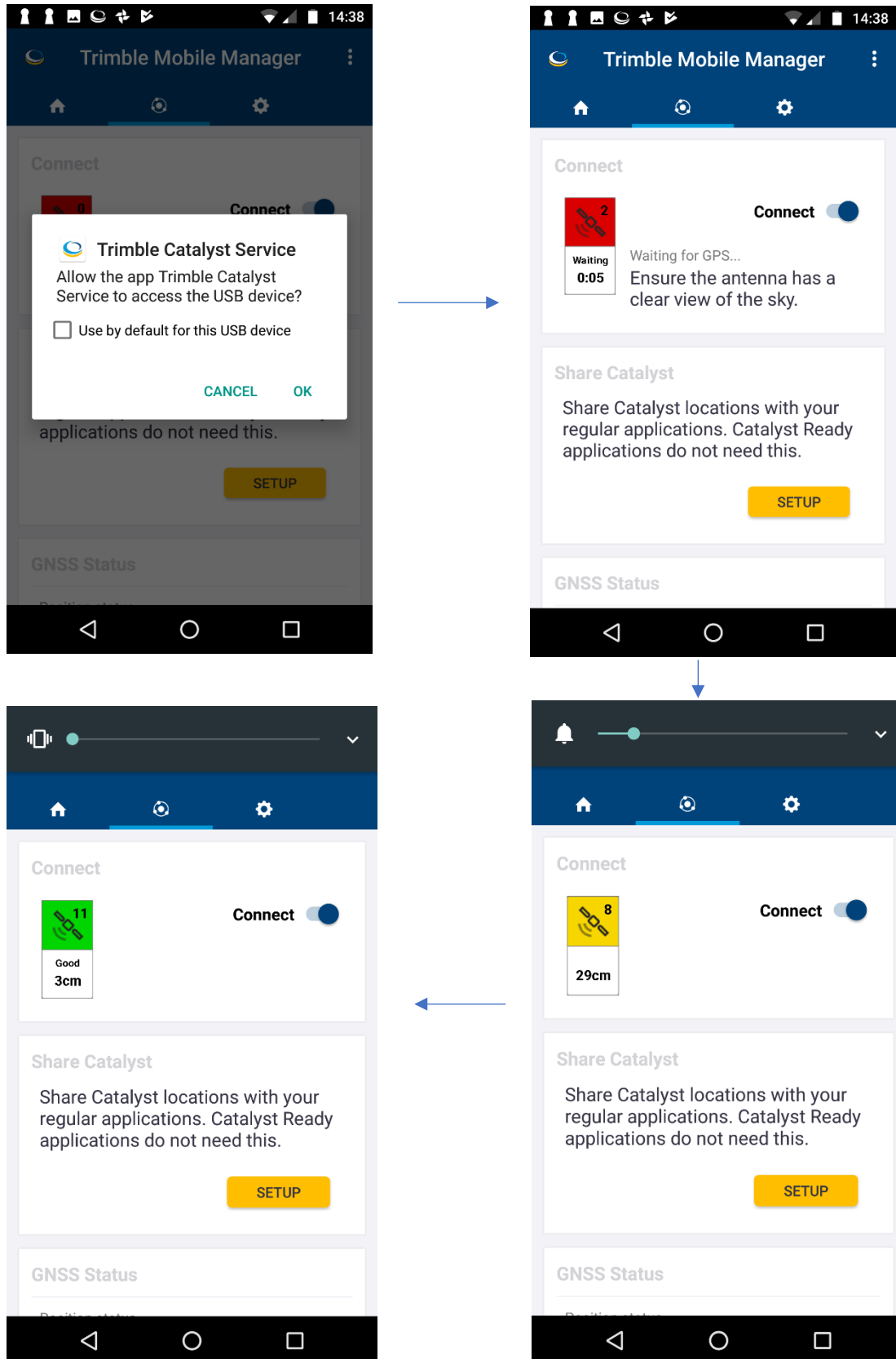


Trimble Catalyst Setup Guide for use with K-Mobile

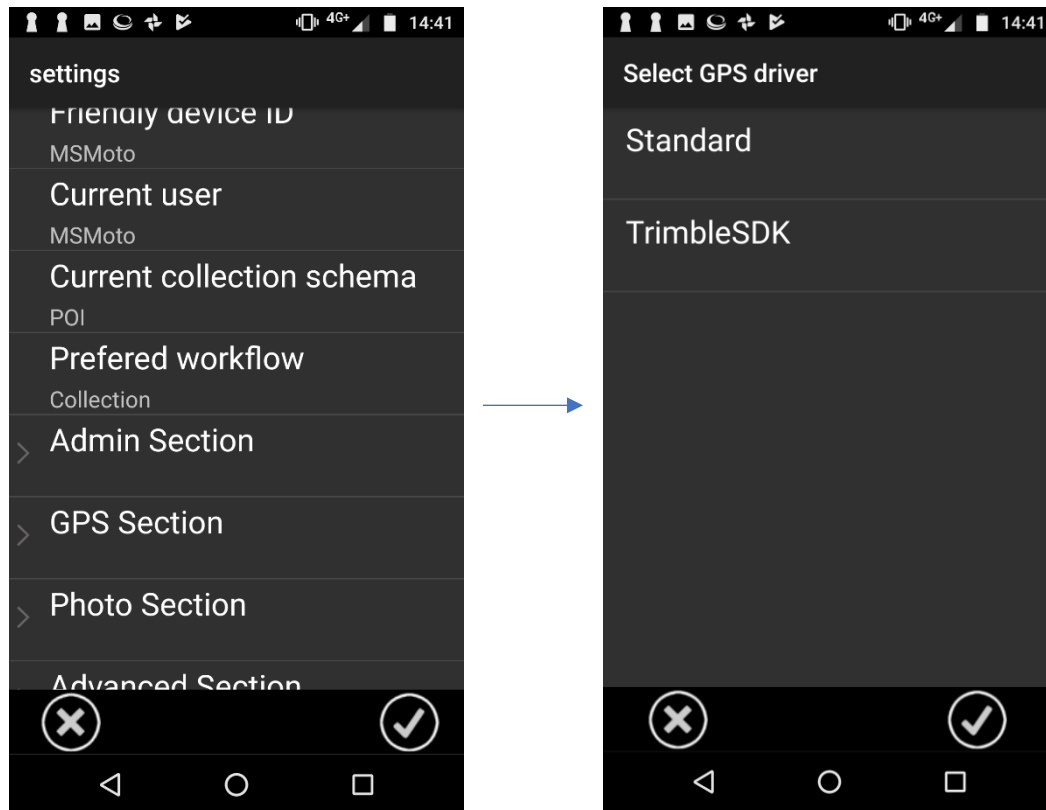
1. Download and install Trimble Mobile Manager from the Google Play Store and log in using your Trimble ID username and password created previously.
2. Connect your receiver to your mobile and log into your account using Trimble Mobile Manager – you will see the screen on the left-hand side (below)
3. There are 3 tabs on Trimble Mobile Manager, scroll to the second tab and connect to the antenna by using the slider next to 'Connect'.



4. Allow the Catalyst app to access the USB device by selecting OK when prompted, and ensure the antenna has a clear view of the sky to allow it to see the optimal number of satellites. The image of the satellite will change from red to yellow to green, indicating an increased number of satellites and level of accuracy.



5. Now, close the Trimble Mobile Manger app but **do not** log out of it.
6. Next, launch K-Mobile and log in.
7. In K-Mobile go to Settings > GPS Section > GPS Driver > Trimble SDK and then Save by using the tick in the right-hand corner.



8. Next, shut down and reopen K-Mobile. A message should appear notifying you that Catalyst is connected – *'Success: Catalyst Driver Loaded'*. Depending on your subscription, you should be receiving sub-meter accuracy within a couple of minutes.