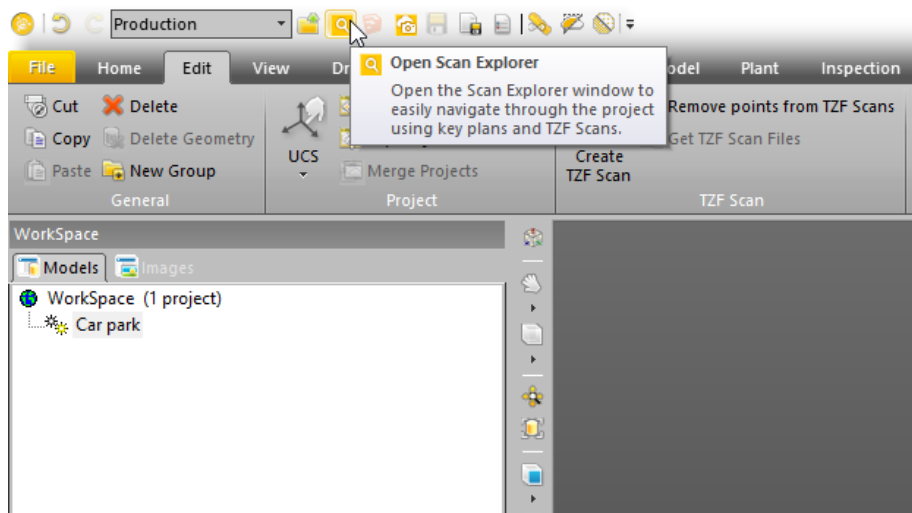


Exporting an e57 file from Trimble RealWorks

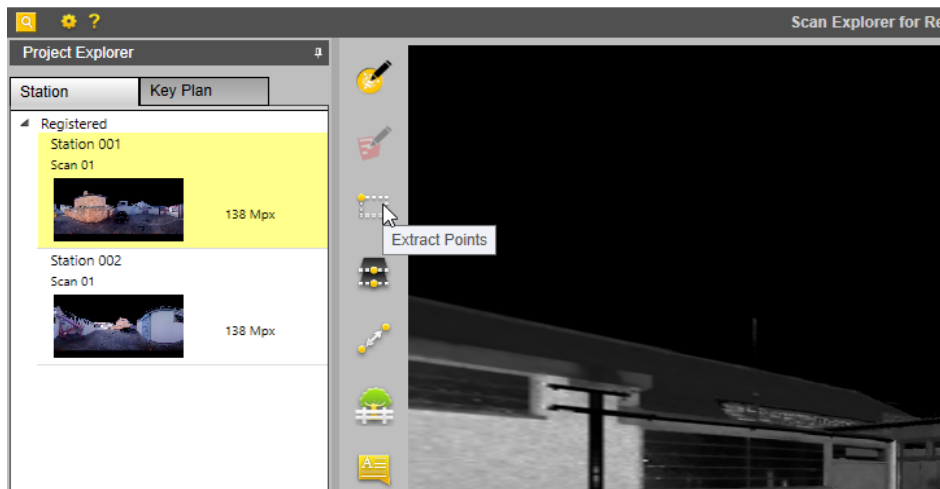
- The .e57 format can store point cloud data from laser scanners and other 3D imaging systems, as well as associated 2D imagery and core meta-data.
- RealWorks allows the user to export using either the **Scan Explorer**, to export all the points from the raw .tzh files, or the export function in **Production Mode** which only exports the points currently extracted in RealWorks.
- The **Scan Explorer** method exports a structured (gridded) .e57 file. These are "fixed-origin" scans, for example data coming from scanners on a tripod. These scans are gridded and are organised in columns and rows. Extracting points allows you to work with the points within RealWorks.
- The **Production Mode** method exports an unstructured (non-gridded) .e57 file.
- Alternatively, it is possible to use RealWorks as a conversion tool by importing the raw .tzh files and converting these to e57 for registration in software such as ReCap.

Exporting a structured .e57 using Scan Explorer

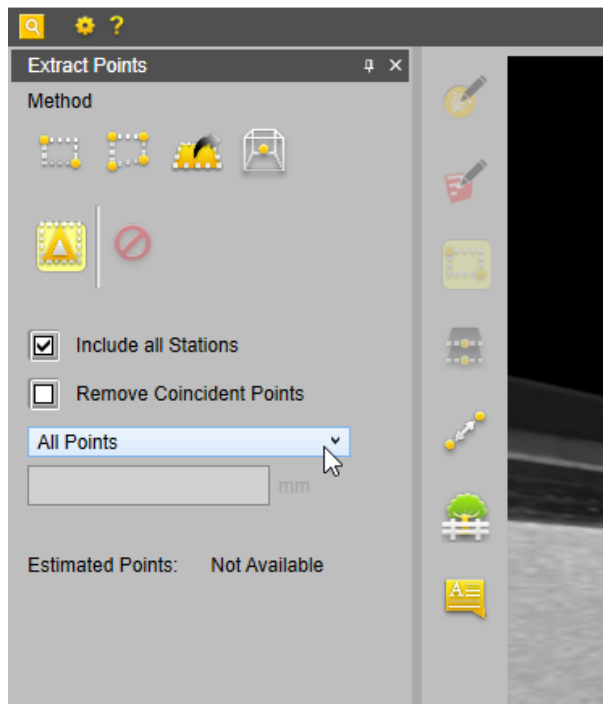
1. Open the Scan Explorer by using the icon in the toolbar at the top of the window.



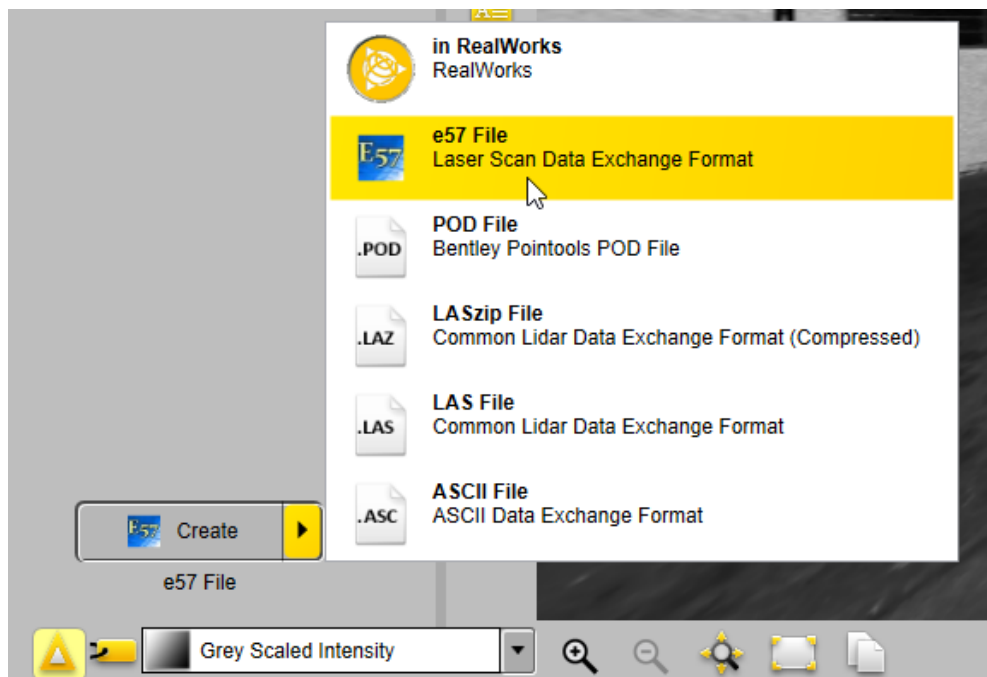
2. Choose *Extract Points*.



3. Choose *Include All Stations*, if this is what you wish to do, otherwise only the scan currently in view will be extracted.

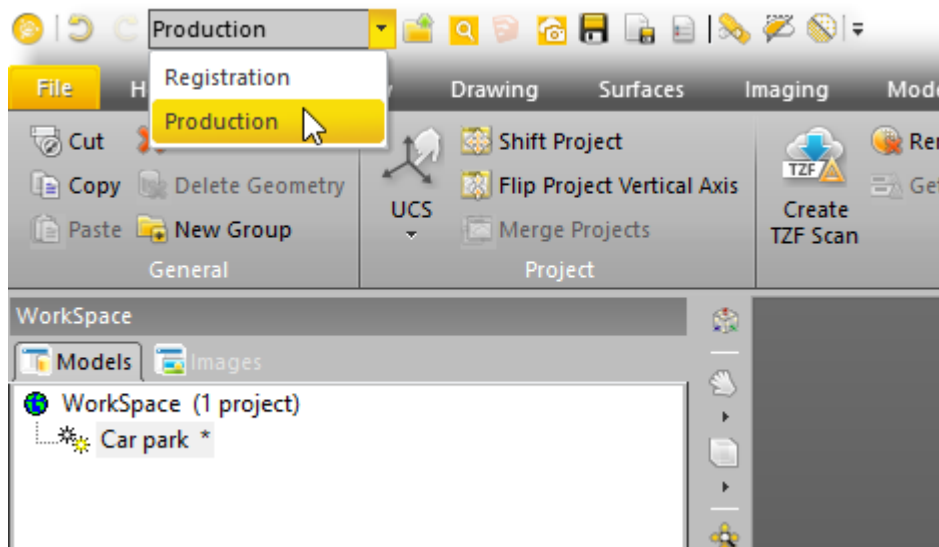


4. Scroll down to Create and select *e57 File* and choose a location for the output file.

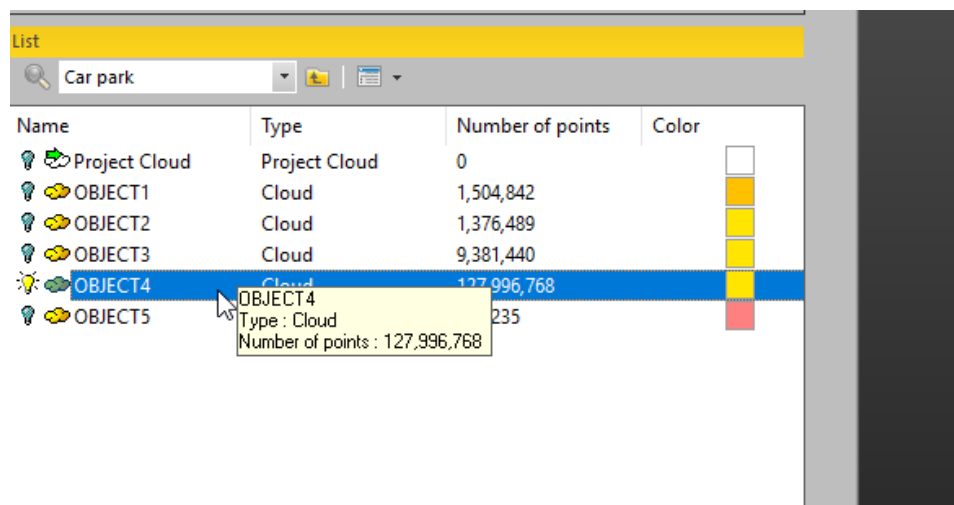


Exporting a unstructured .e57 using Production Mode

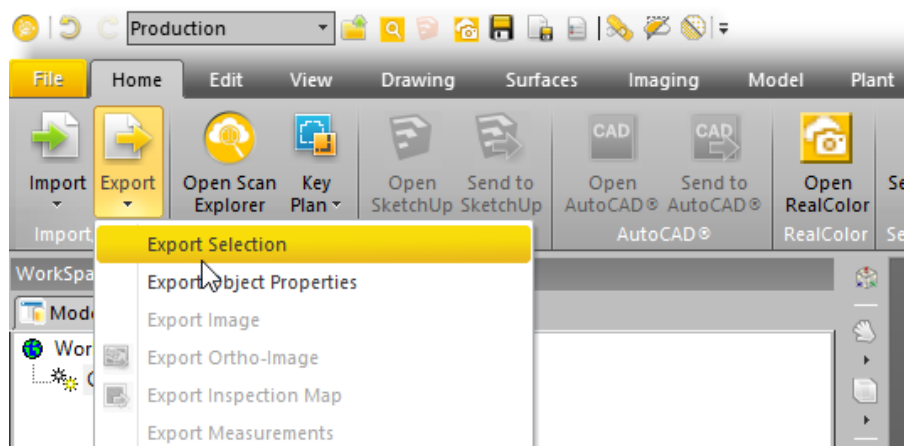
1. Firstly, put RealWorks into Production Mode.



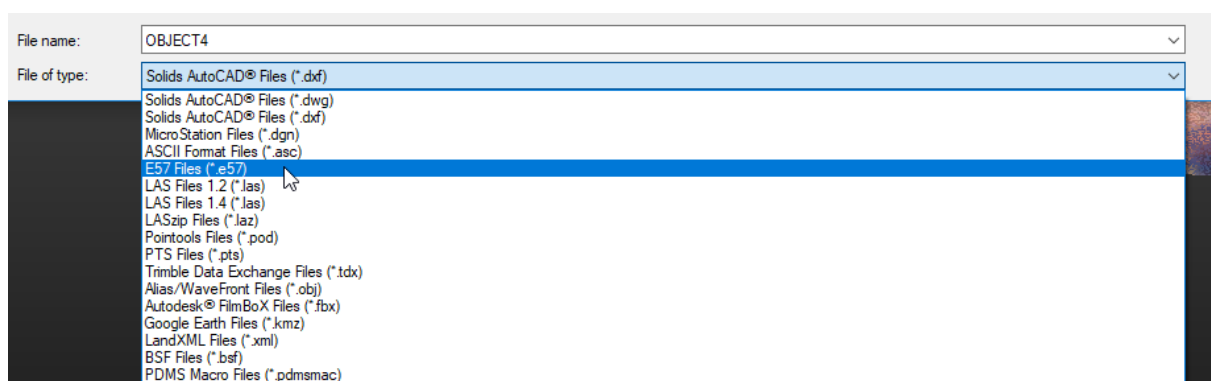
- Choose the cloud from the List window which you want to export.



- Select *Export* in the *Home* ribbon and choose *Export Selection*.

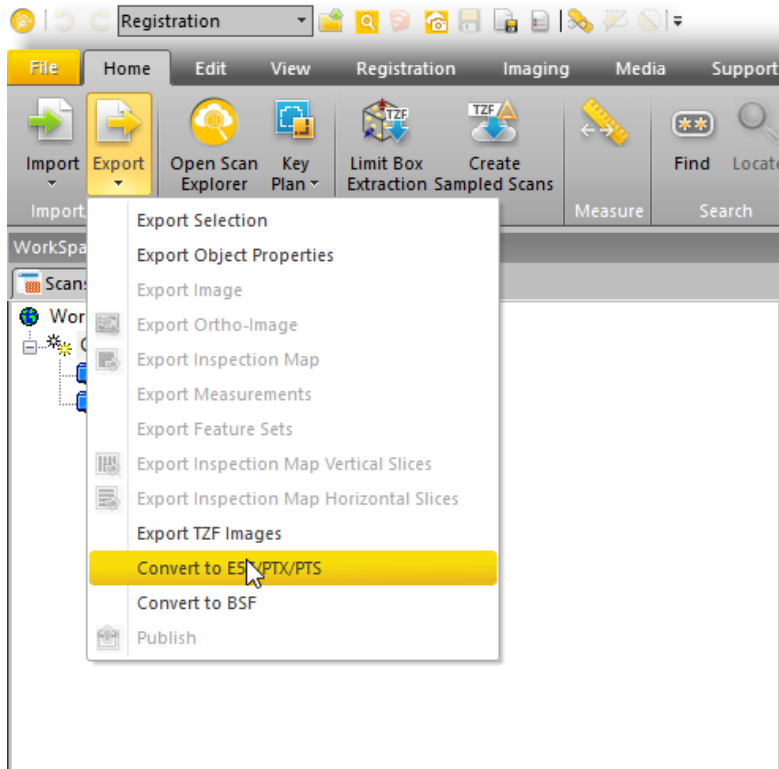


- Select .e57 from the drop-down menu and save it to a location of your choice.

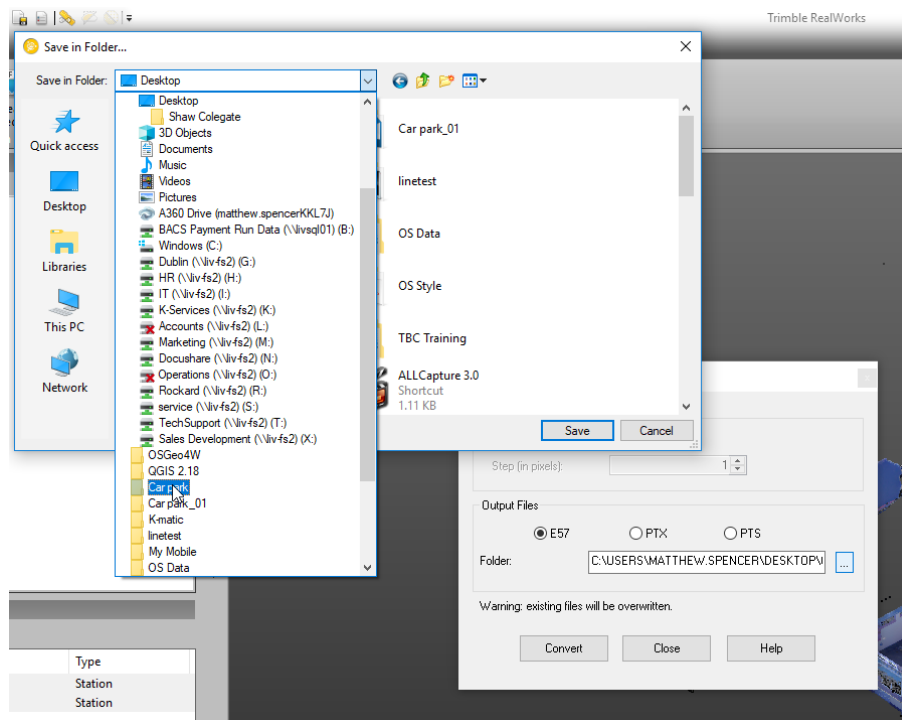


Exporting an e57 file from Trimble RealWorks to ReCap

1. Ensure RealWorks is in Registration mode and import the raw files, select the scans from the list window and and select Export > Convert to e57.



2. Choose a location for the output file and select convert.



3. Import into ReCap for registration.

