

## Tethering from a Smartphone

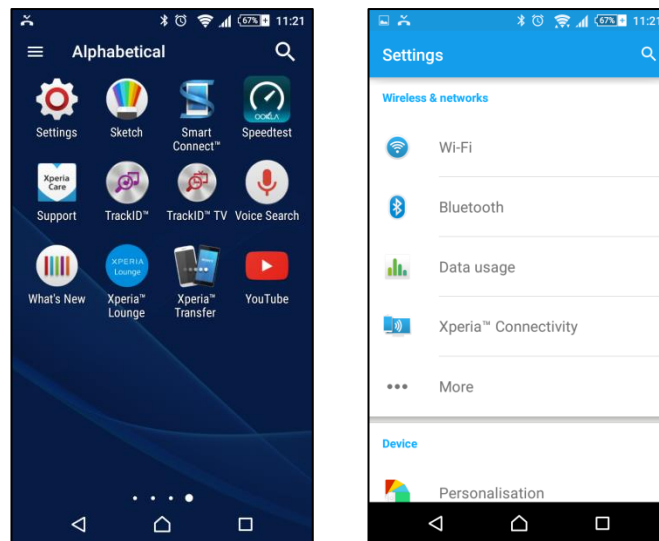
### TSC3 and a Smartphone (Android or iPhone)

#### Prerequisites:

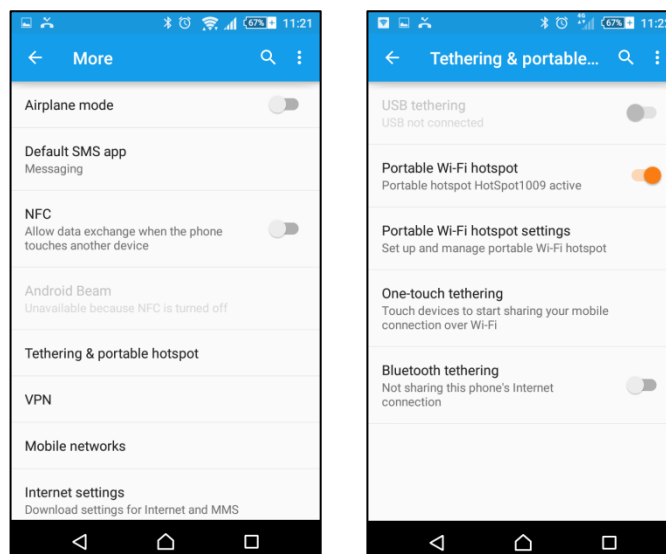
- TSC3
- Smartphone

#### Configuring the Portable Hotspot – On an Android based smartphone

Go to your smartphone settings, and from there click “more”

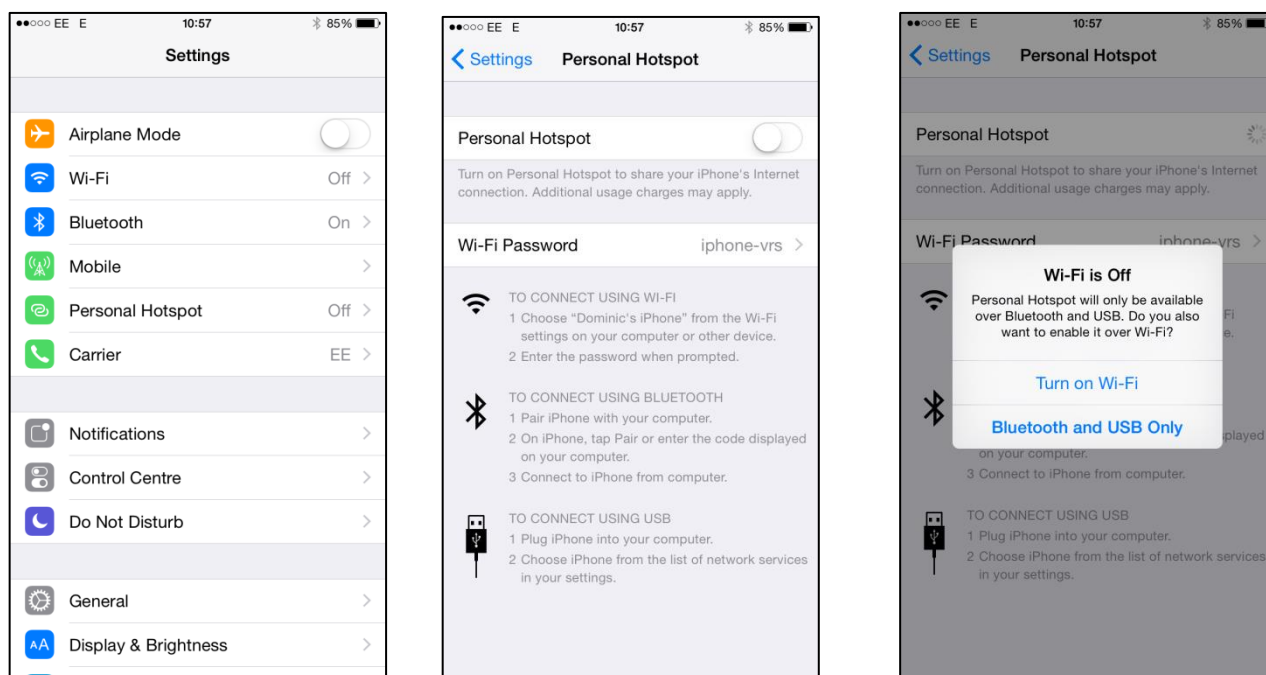


Click the “Tethering and Portable Hotspot”, and then click the “Portable Wi-Fi Hotspot” to enable it. Change the hotspot settings for name, security and password if desired.



## Configuring the Portable Hotspot – On an iPhone based smartphone

Go for settings – “Personal Hotspot” and tap the personal Hotspot button to enable it. Change the hotspot and password if desired. Then select turn on Wi-Fi to tether (if required)



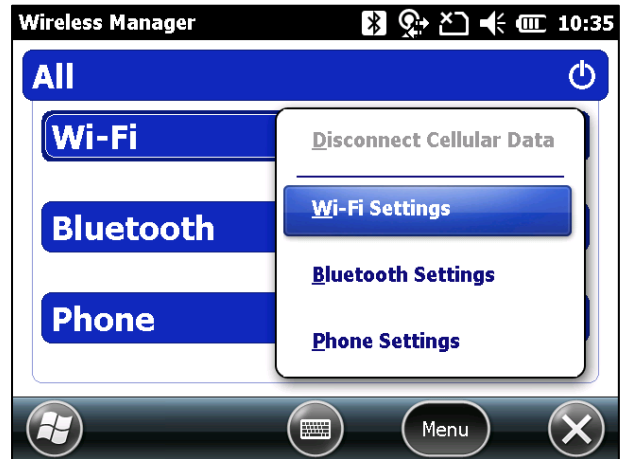
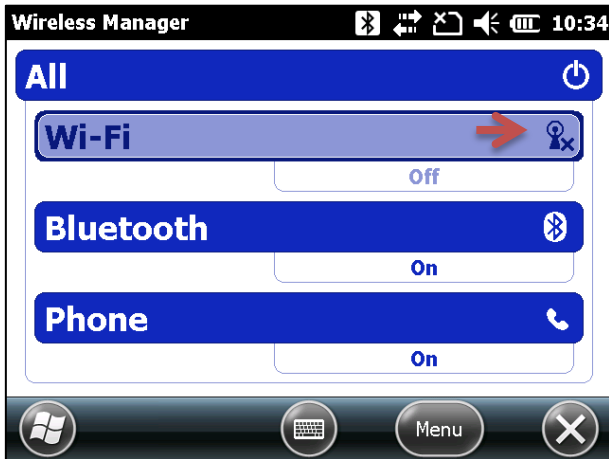
## Connecting to the Hotspot from the TSC3.

Press the Windows Key in the top left hand corner of the keypad.

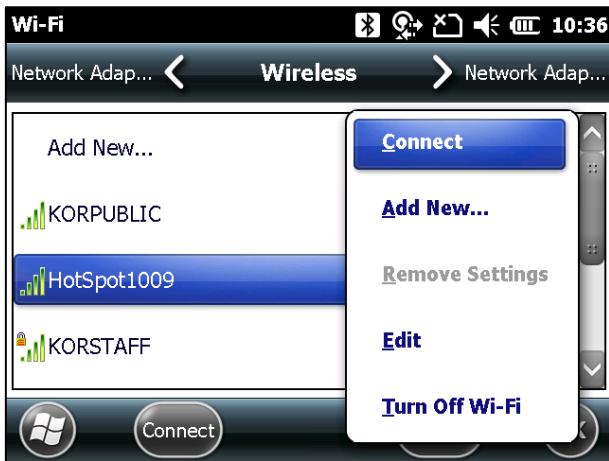
From the Windows Mobile screen home page, select the Settings menu, and from there, the connections menu.



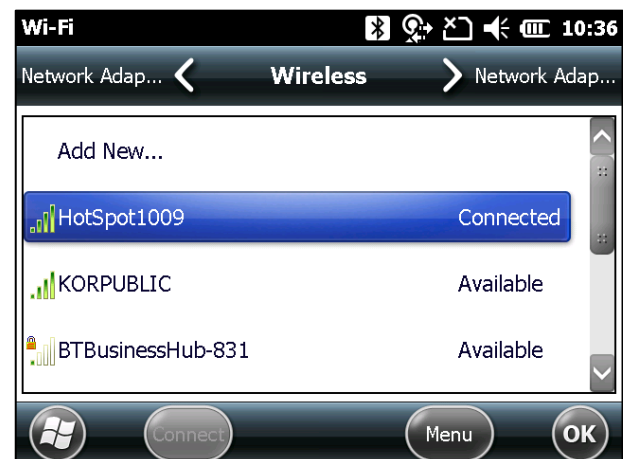
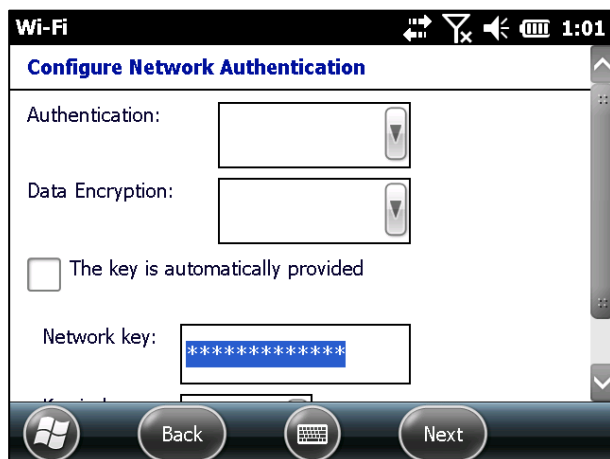
From this Menu go to the Wireless Manager, and enable Wi-Fi, from the Wi-Fi icon. Then select the Menu button, from the bottom part of the screen to access the Wi-Fi Settings.



From here long press on your selected Wireless Hotspot and click connect. Click Next.



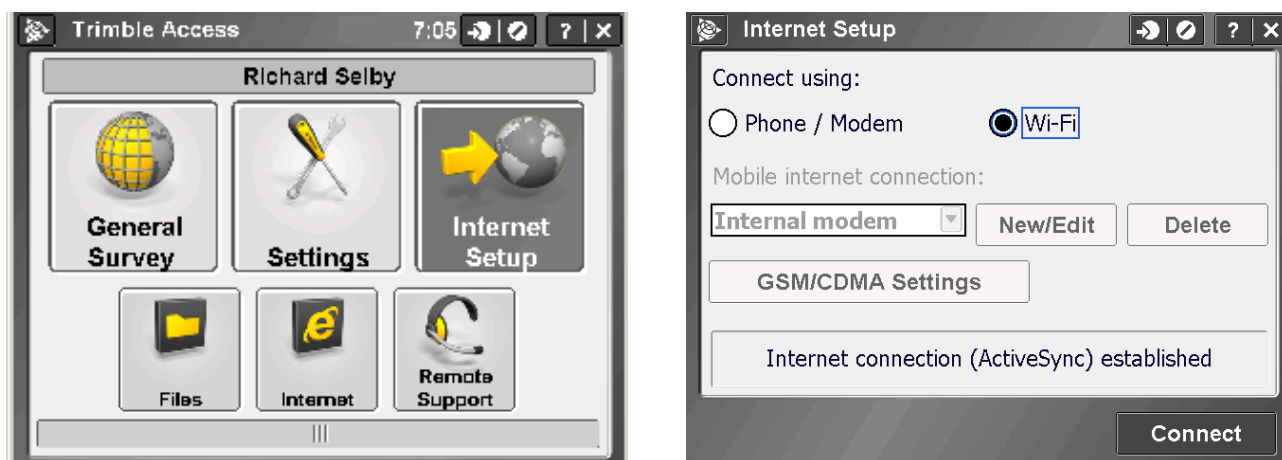
Add the network key for your Wi-Fi Hotspot and click Next and then Finish. If all is ok, it should read "connected" when successfully connected.



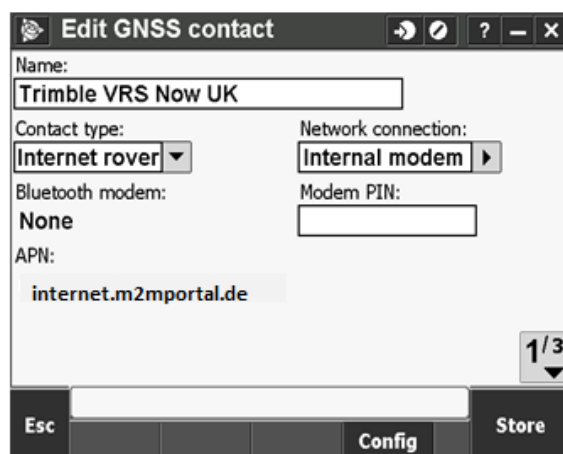
Once connected press OK to return to the Wireless Manager Screen and the X in the bottom right hand corner of the screen to return you to Windows connections. Click the X in the bottom right hand corner to return you to Trimble Access.

## Configuring the Internet Connection in Trimble Access

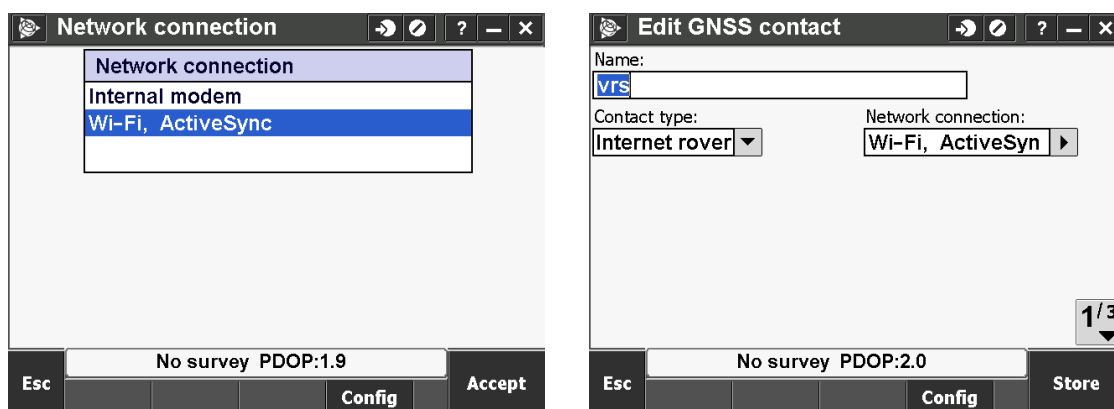
On the Trimble Access main menu screen, tap Internet Setup, and then select connecting using Wi-Fi.



Close that window, go to your settings, then connect, GNSS contacts, and edit an existing one.



Clicking on the arrow from the Network connection will give you a list to choose from. Select Wi-Fi, ActiveSync and accept, then store the GNSS contact.



Now you should be able to use the Portable Hotspot for your VRS connections.