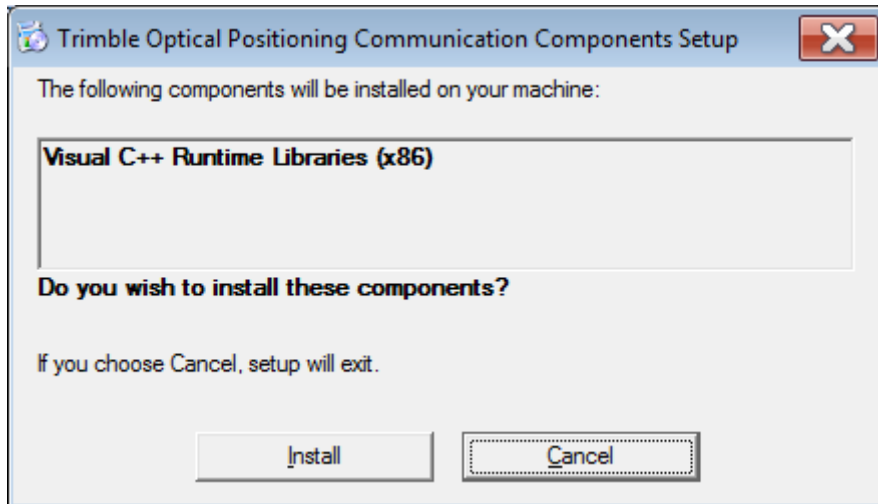


## Installation Guide for GEDO software on Trimble Tablets

### 1. Installation of SNP component

- Extract the zip archive **SNP\_Service\_R4.7.16\_x32**
- Open the directory and start the **setup.exe**. Several components will be installed after each other. When the following dialog appears hit **Install**.



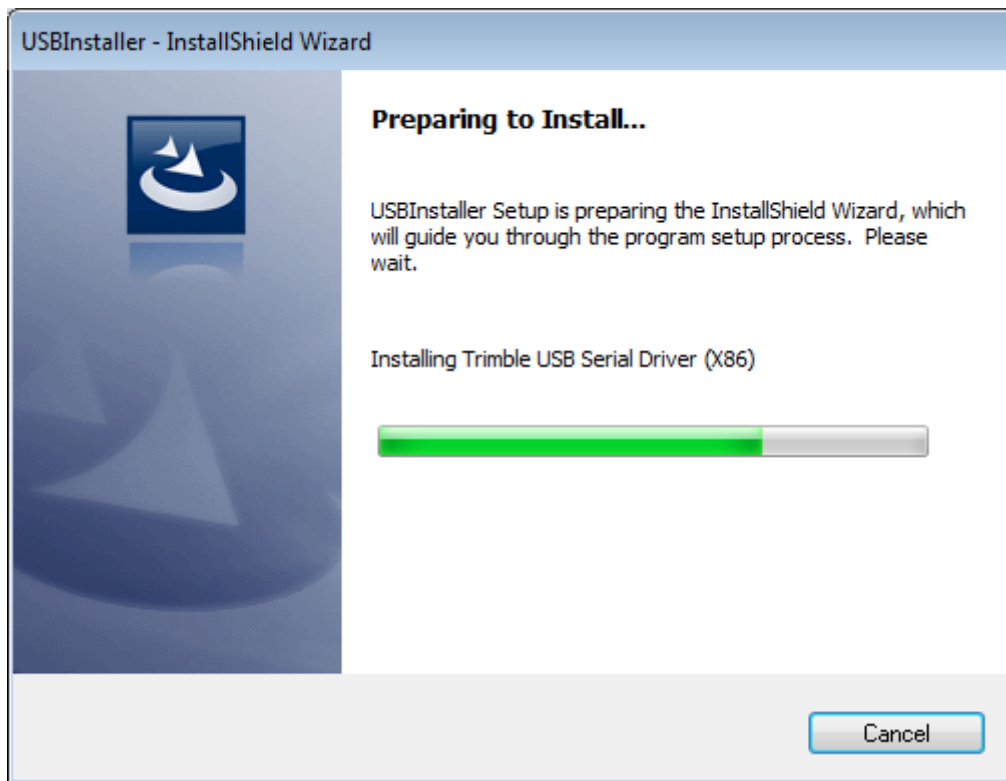
- The installation of Visual C++ Runtime 2005 component may take a while.
- In a next step, the SNP component will be installed. Click **Next**, select a directory and hit **Install**.



- Once the installation procedure has completed, exit this installer

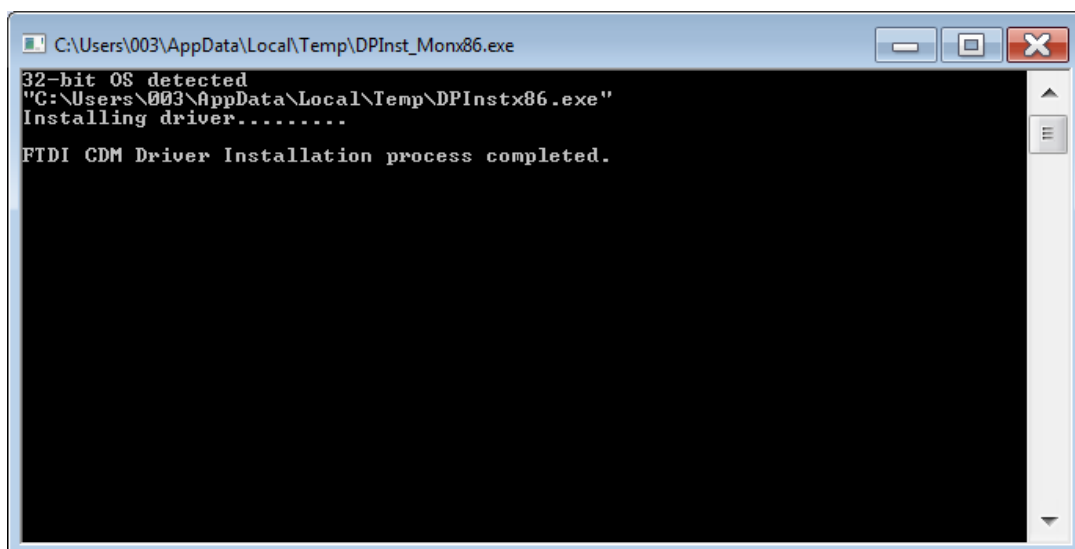
## 2. Installation of USB driver for S-Series total stations

- Run **Win7\_USB\_Installer.exe** and follow the instructions.



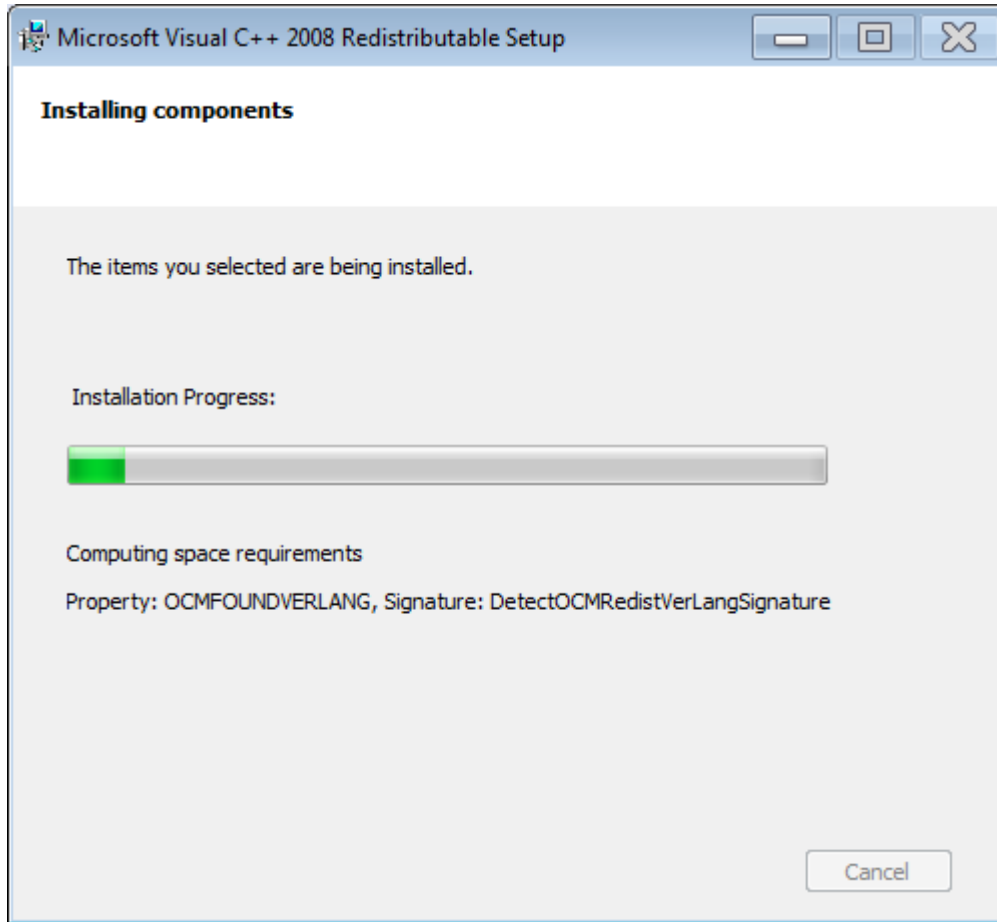
## 3. Installation of Radio driver for S-Series total stations

- Run **USBRadioDriver.exe**. There is nothing you can do here. Just wait for the console window to close.



#### 4. Installation of Visual C++ Runtime 2008

- Run **vcredist\_x86.exe** and wait until the installation has completed.



#### 5. Installation of GEDO software

- Run the installer of your requested GEDO software and follow the instructions.
- **Attention!** *The installation directory must not be c:\Program files due to right restrictions on your Windows OS!*
- Run Gedo software from the short link created on your desktop.
- In case of GEDO Rec, accept the automated installation of the FARO SDK even though you might not want to use GEDO Scan.
- Four DLLs (GedoTrack and Vorsys: two) have to be registered during the first startup. Just accept all of them.
- Once you see the main window, exit the application again and order the license just as explained in the user manual. Once you received the license and stored it in the application directory, start GEDO software again.

Note: *It might be necessary to restart the PC after GEDO software has installed all DLLs and a virtual COM port.*

