

Uniflow Directions

When the laptops were provisioned, they were provisioned with canon drivers for OSX 11 Big Sur. If staff updated to OSX 12 Monterey, then they would need to update the driver and reinstall the printer. Now OSX Ventura is out, so you will need to update the software again.

1. Get the new driver from Canon

<https://www.usa.canon.com/support/p/imagerunner-advance-4545i-ii>

Navigate to Canon and select your OSX, it should be 13 and select new driver. Please select the Postscript Driver.

Operating System: Mac (detected) | Version: macOS 13

Type: All | Language: English | Sort: Recommended

1-4 of 4 Results

RECOMMENDED

File Name	Type	Date	File Size	DOWNLOAD
UFRIL_V10.19.13_Mac.zip	Drivers	11.16.22	98.3 MB	DOWNLOAD
PS_V4.17.13_Mac.zip	Drivers	11.16.22	66 MB	DOWNLOAD

2. Staff will need to uninstall the current uniflow printer. Navigate to System Preferences (Gear icon).
3. Select Printers and Scanners.
4. Select the printer and select the minus button. You will be prompted to delete. Click yes on the blue delete printer icon.

Printers & Scanners

Printers

Uniflow
Idle, Last Used

Uniflow

Open Print Queue...

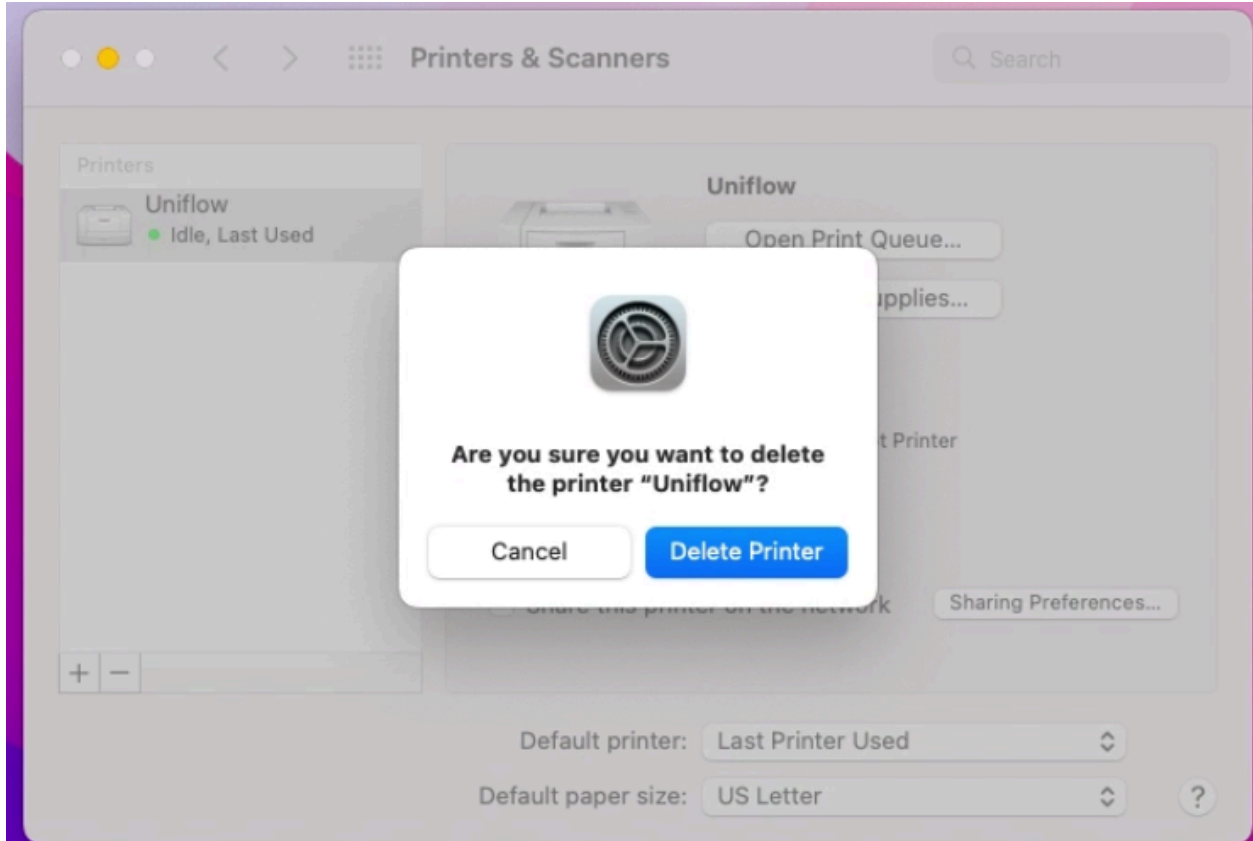
Options & Supplies...

Location: All
Kind: Generic PostScript Printer
Status: Idle

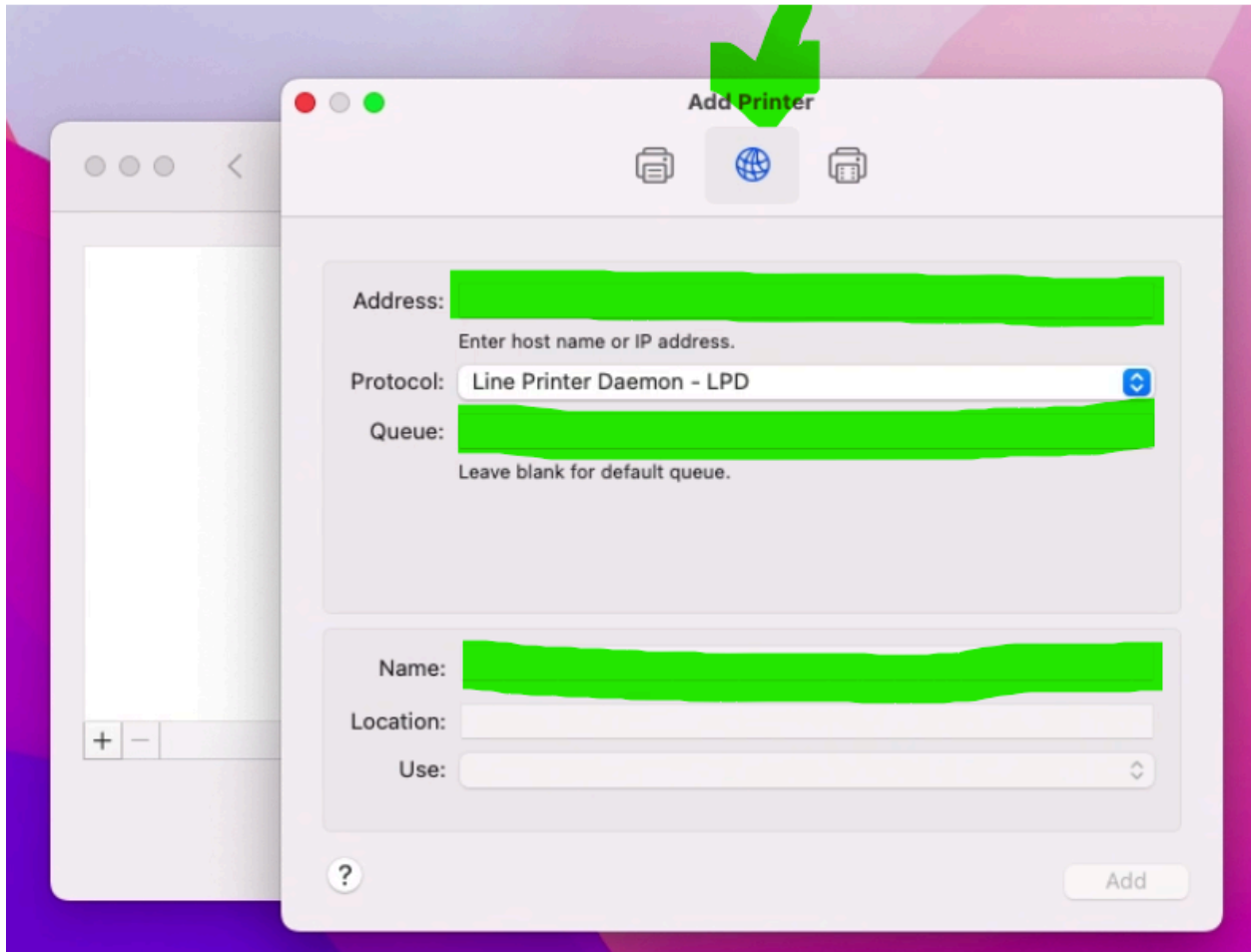
Share this printer on the network

Default printer: Last Printer Used

Default paper size: US Letter



5. Add a new printer by selecting the add button. Select the middle globe icon and place information in the following.



6. **Address:**
This will be your first name, dot, and last name, and then add this @156.3.142.25
first.last@156.3.142.25
7. **Protocol:**
This should read LinePrinter Daemon-LPDSecurePrint
8. **Queue:**
Place exactly as spelled in example
9. **SecurePrintMAC**
10. **Name:**
Place Uniflow as name
11. **Location:**

Place All

12. Use:

This will automatically go to Generic PostScript Printer. If it doesn't, then please select Generic PostScript Printer.