

Smart Bluetooth LED Bulb Light with Speaker



This product has a unique and exclusive two-in-one design - the smart LED lamp and Bluetooth stereo audio speaker. Bluetooth 4.0+EDR (enhanced data rate) and purity and definition of particular voice based on DSP technology. Wish you have infinite joy from the combination of light and music.

- RGB Change color, warm/cool white and brightness dimmable as you need;
- Timer setting: auto light, auto music and alarm clock;
- Mood lighting and music rhythm, enjoy music anywhere;
- Sound effect setting: Pop, Classical, Jazz, Bass and Flat.



App Store



Chinese Android



Android Market

Scan the **QR-Code** download **APP**. Search “**iLink**” on your App Store or Android Market by Mobile Phone

I .Specification

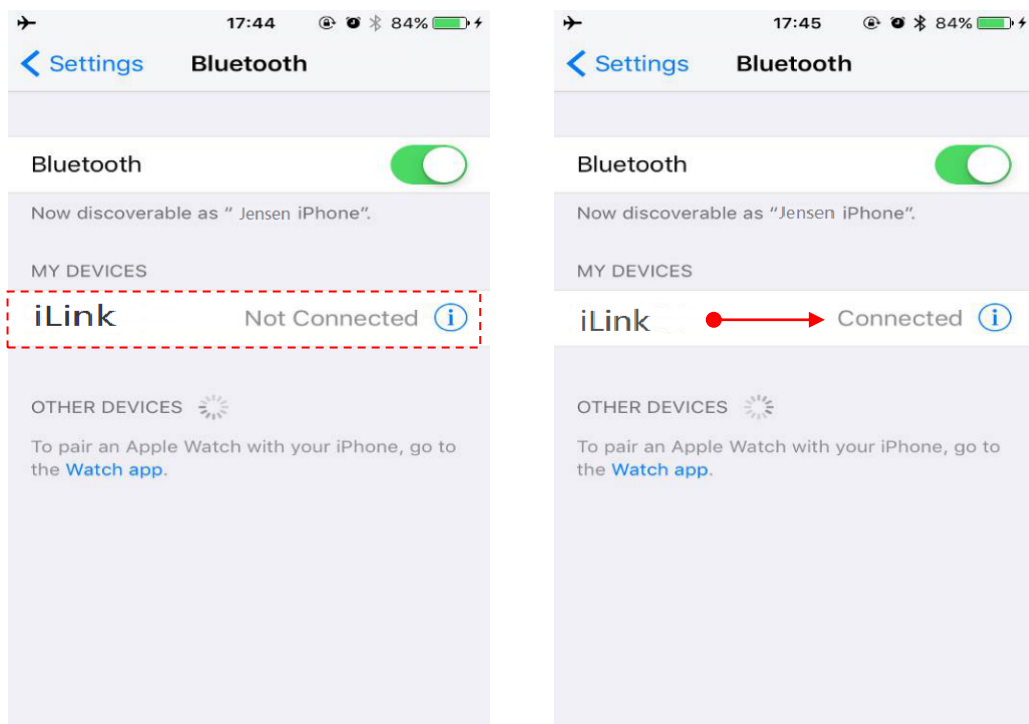
No.	Item	Parameter
	Input Voltage (V)	90-245V / 50-60HZ
	Input Power (W)	<7W
	Efficiency	>90%
LED light indicators		
	Lamp Power (W)	<4W
	Lumen Ratio (K)	>400, 5W power consumption
	CRI	White>0.75; Warm white>0.85
	Color Temperature(IF)	3000-6500, Tolerance: ±500K
	Light Decay	<10%, T=25℃; RH=90%; H=20000
	Illumination Angle	>90°,According to customers request
	Dimming	PWM
Audio amplifier indicators		
	Audio Power (W)	3W, 4 Ω , THD+N=10%, 1KHz
	Frequency Response	40HZ-18KHZ, Nonuniformity: ±3dBm
	Audio Distortion (HTD+N)	<1%, P=1W;1KHz
	Signal to Noise Ratio(SNR)	>80dBm,P=1W;A-weight
	Volume Control	Bluetooth APP
	Bluetooth Distance	>10m,Straight line distance and no obstacles
The use of ambient temperature		
	Working Temperature(℃)	-20-60
	Storage Temperature	-40-70
Package		
	Carton Size	52*32*32cm/ctn 11.2kg/ctn 30pcs/ctn



II. Bluetooth Connection

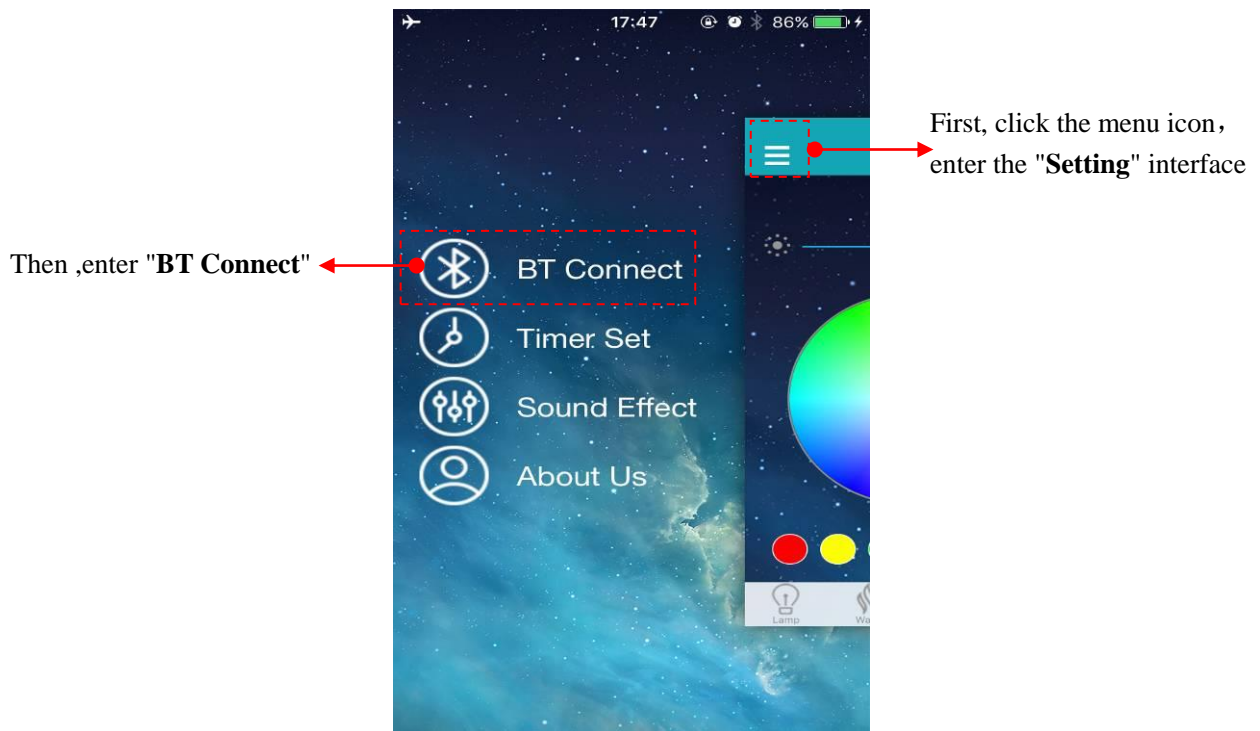
For the first time you use it or never pair with "iLink" after moving the equipment, please have it paired according to the steps below:

- i. First of all, please enter your phone's settings, open the Bluetooth, and pair with the "iLink". Enter the System Settings - Bluetooth - to discover and connect the device name "iLink". Once connected, you will hear the connection tone.

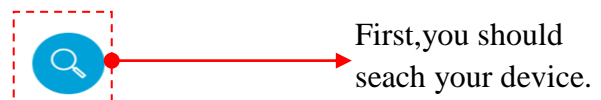
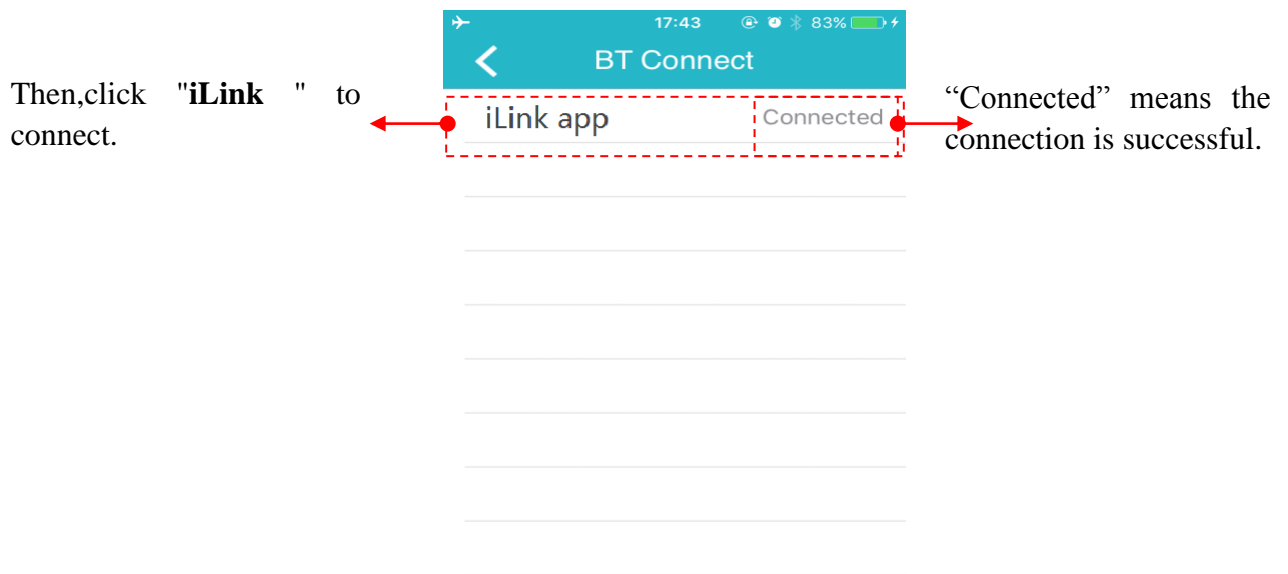


Tips: The next time you use it, it will connect with your phone automatically (the Bluetooth is open).

ii. Open the app, enter the main interface. Click the menu icon, enter the "BT Connect", as follow:



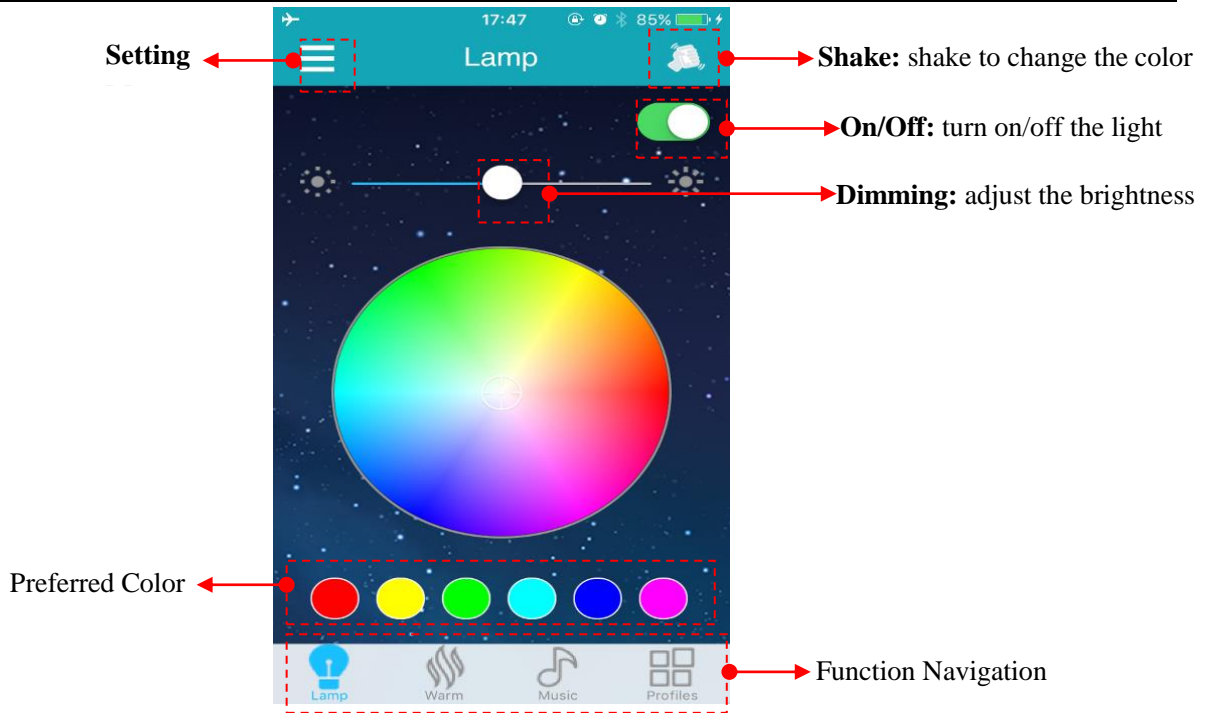
iii. "BT Connect", operate as follow:



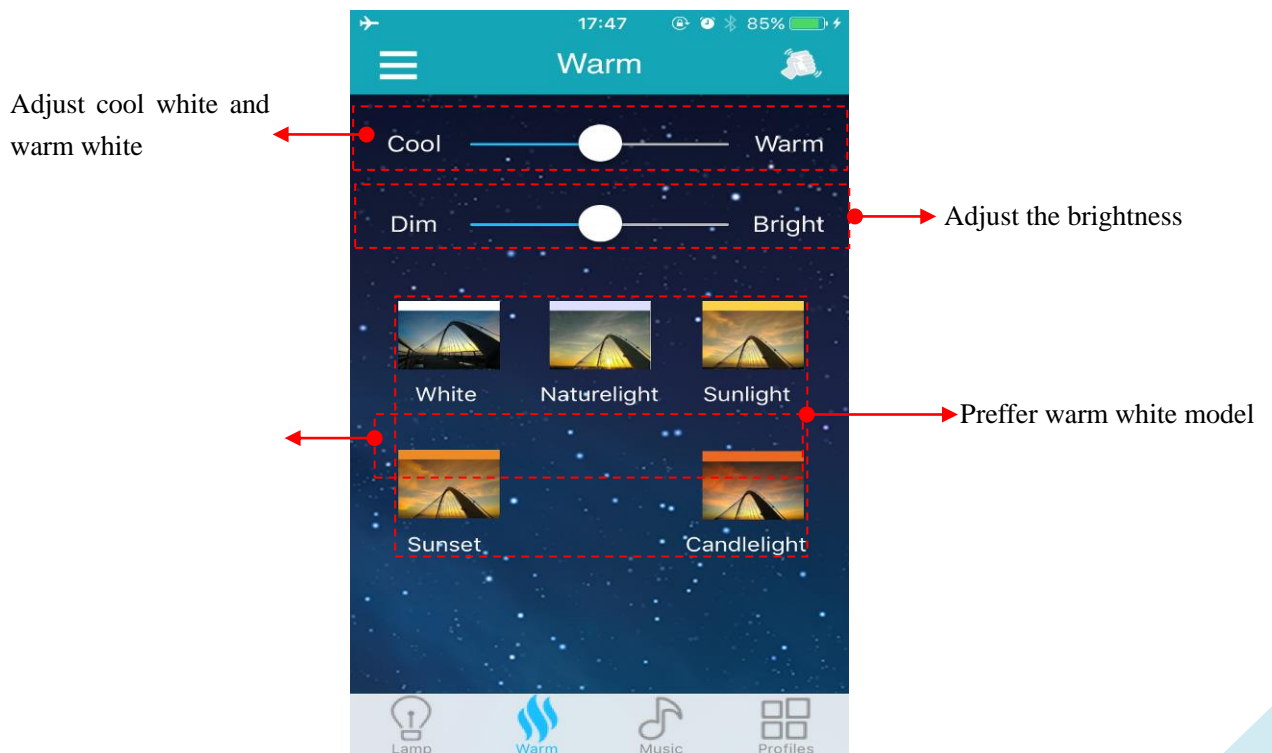
Then,you can start operate the smart ceiling light via the app. Enjoy the magical light and music.

III.Main User Interface

A. Lamp: cool white light control

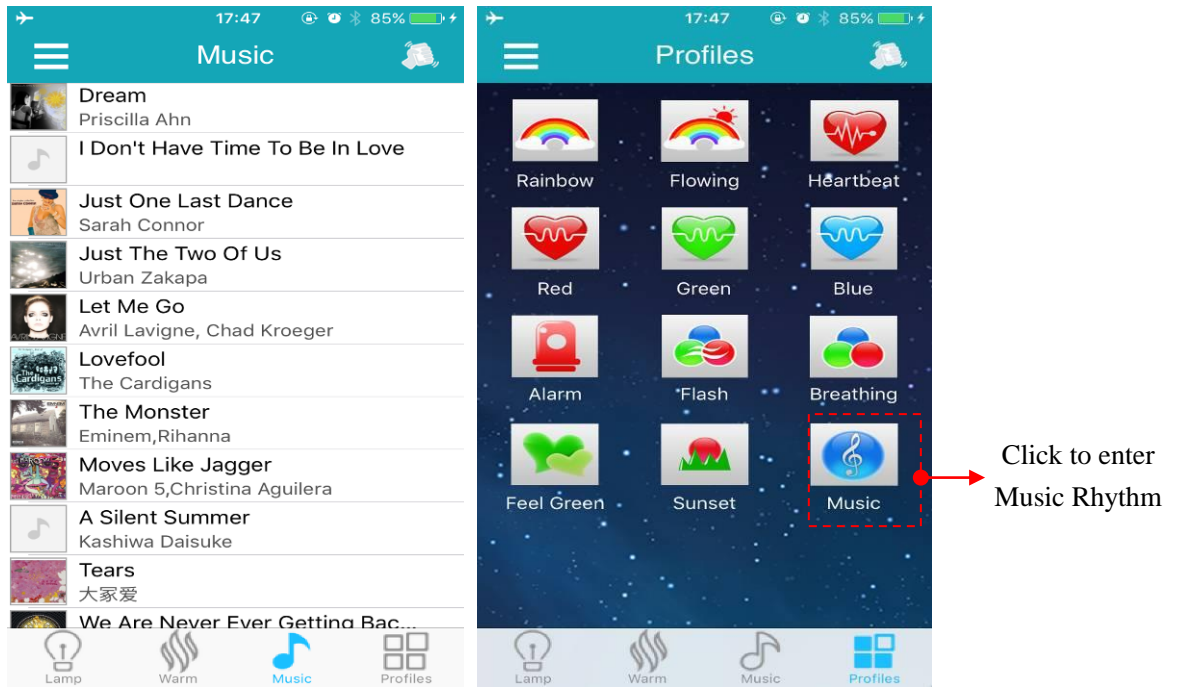


B. Warm: warm white light control



C. Music

When you use the lamp for the first time, please enter your phone's settings, open the Bluetooth, and pair the "iLink". Then, enjoy your favorite music. Only iTunes Player is support musical rhythm, the color flashing with the music. The third party player is not support.

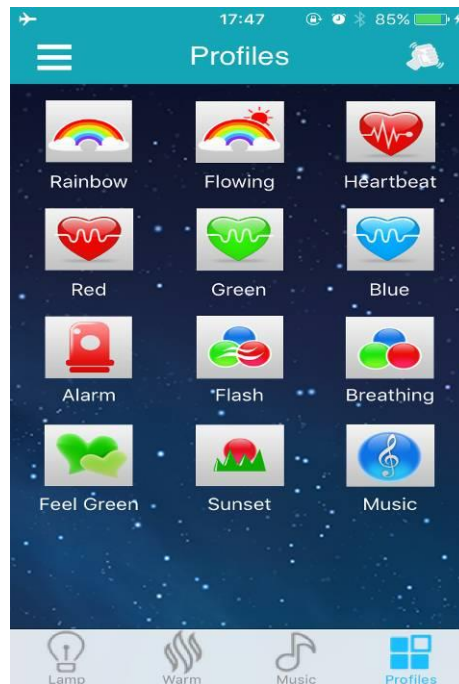


Music play interface



Tips: iOS system, non-iTunes music have none "Musical Rhythm" lighting effect.

D. Profiles



Rainbow: brightness and color random changing gradually as the rainbow;

Breathing: brightness and color changing like breath;

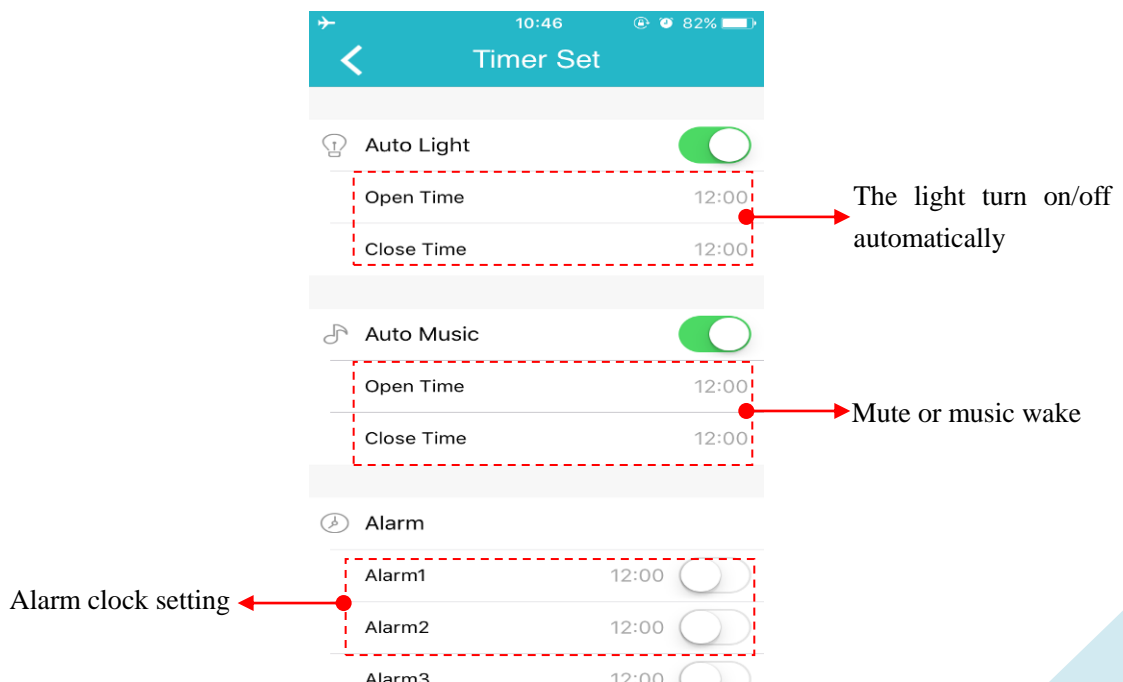
Flashing: stage-lighting effect, the light fast switching;

Heartbeat: fast switching just like the heartbeat;

Music: "musical rhythm" lighting effect, working when music playback, stop when pause.

E. Timer Setting

It is your close sleep assistant and smart alarm clock. The music and lamp turn on/off automatically.

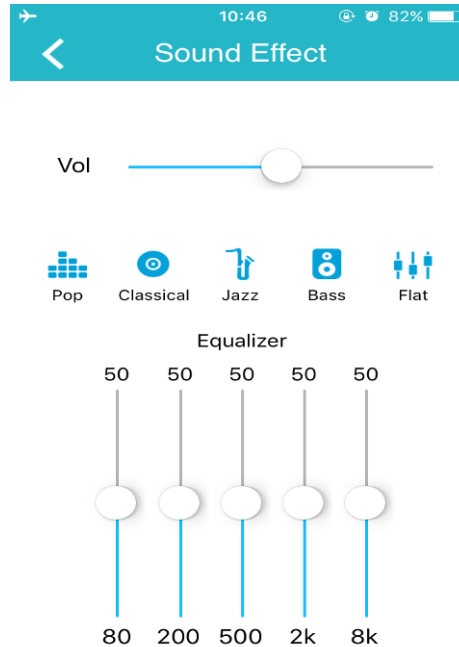


Tips: The function automatic work even when the Bluetooth disconnected.

F.Sound Effect

Sound effect setting: Pop, Classical, Jazz, Bass and Flat.

You can set your favorite **high pitch/low pitch** sound effect via tone equalizer.



IV.Note:

- ◆ If you can't search your Bluetooth bulb device or can't connect with the Bluetooth lamp device for a long time, please enter your phone "system settings" and connect again; □
- ◆ Do not put the ceiling light in the place which is humid or has water;
- ◆ Keep using it under the power supply of 90V to 245V AC, 50-60Hz;
- ◆ This led bulb light is not a toy and keep it untouchable to children;
- ◆ Do not put the bulb light on high-temperature surface;
- ◆ Do not open any sealing device for safety and according to Warranty Terms;
- ◆ Cool down the bulb light before replacing it to avoid electric shock or burning.

