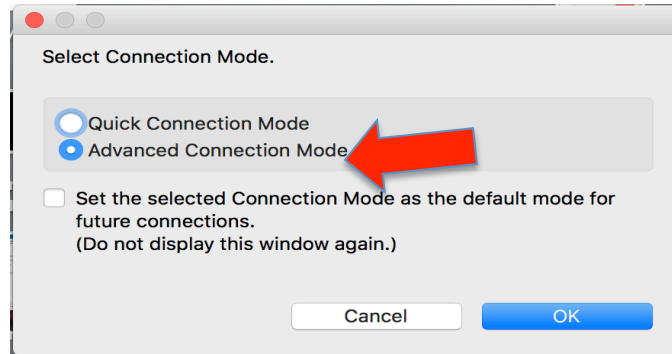
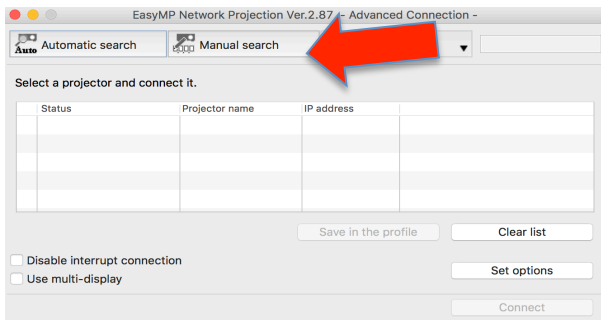




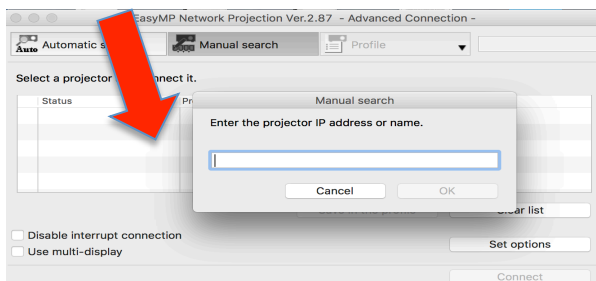
Make sure your projector remote looks like this. You will need to toggle between the LAN & Computer buttons. Select LAN to use the Wi-Fi connect--it will display the **IP and Keyword you will need to type into the Easy MP Network Projection software on your laptop.* To return back to computer setup, select the Computer button.



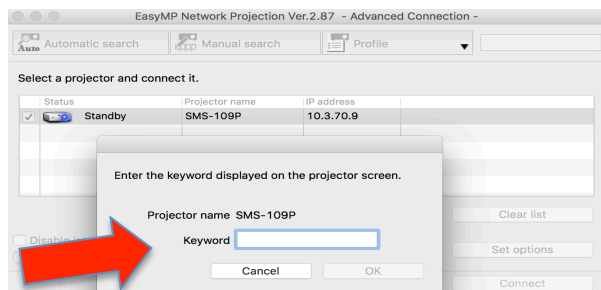
Open Easy MP Network Projection installed on your laptop. Select Advanced Connection Mode.



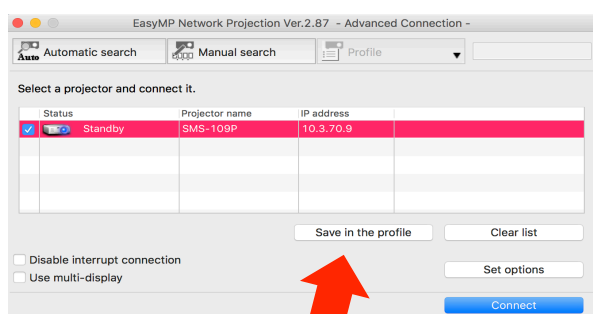
Select manual search.



A window will open requesting the IP of the projector. **You get this info when you press LAN on the projector remote, it displays on the board.*



Next, enter the **keyword*.



Select the projector and click connect.