

## HCC537 (Zion Room) Operation Guide

To start let's familiarize ourselves with the different elements of the room that we will be referring to throughout this guide.

- The below illustration (*Figure 1*) shows the locations of the various parts of the system that you may need to interact with.

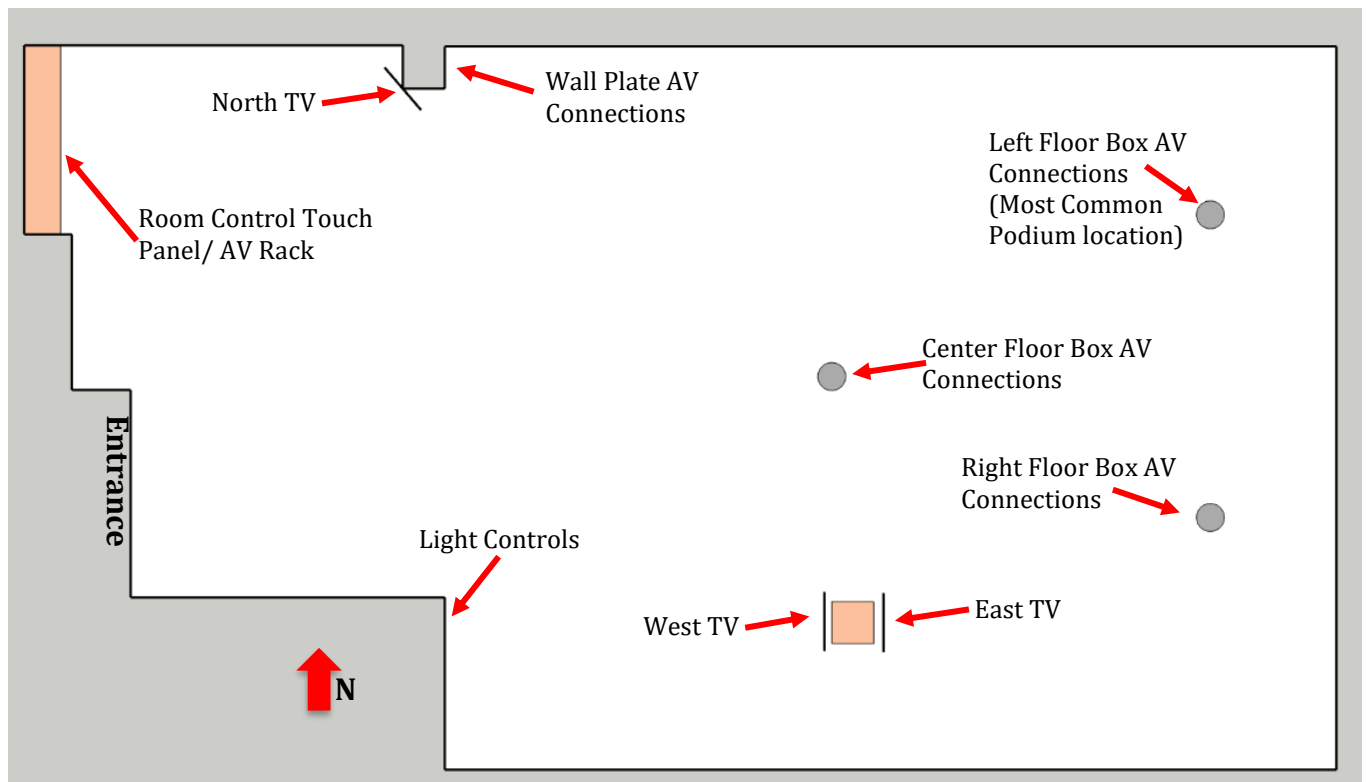


Figure 1

As we go through this guide, we will reference *Figure 1* several times.

## Basic Presentation

This section will demonstrate how to display a simple presentation with the same image displayed on all four displays.

- To start locate the Push Button Control Panel located on the Podium connected to the Left Floor Box (see *Figure 1*).
- Press the “System ON” button (See *Figure 2*)
  - While the system starts up there will be a short 30 second delay before you can continue



Figure 2

- You can now select from one of the five input selections (HDMI, Wireless, and VGA) to display on the screens. (By default, “HDMI” is selected)
  - Note: HDMI and VGA on the Push Button Control Panel refer specifically to the connections in the Left Floor Box AV Connections (See *Figure 1* for location)
  - When using “Wireless” the on-screen display will guide you through connecting your device. Detailed operation will be discussed later in this guide

- To use your own device, you can connect via HDMI or VGA (see *Figure 2.1*) at the podium connections which are connected to the Left Floor box (see *Figure 1*)

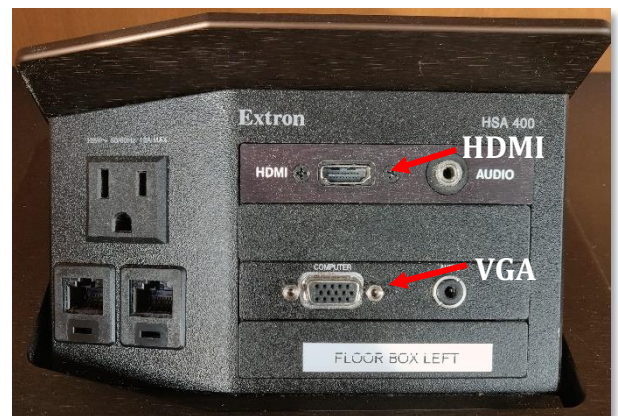


Figure 2.1

- To adjust the volume, use the volume knob on the Push Button Control Panel (see *Figure 2*)
- The “Mute” button (see *Figure 2.2*) will mute/unmute all audio.
- The “Blank On/Off” (see *Figure 2.2*) will hide/show the image on all displays.



Figure 2.2

## Advanced operation

The remainder of this guide will focus on the full operation of all the system operations from the Room Control Touch Panel located near the AV Rack (see *Figure1*)

- To turn the system on Press the Power button on the Start page (see *Figure 3*)
  - The Start page also has buttons to bring up “Phone Control\*” and “Audio Control” without having to turn the entire system on.
  - The operation of these buttons will be outlined later in this guide.
- Once the system has started up you will be at the Main Page (see *Figure 3.1*).
  - From this page, you can access all other room functions.



Figure 3

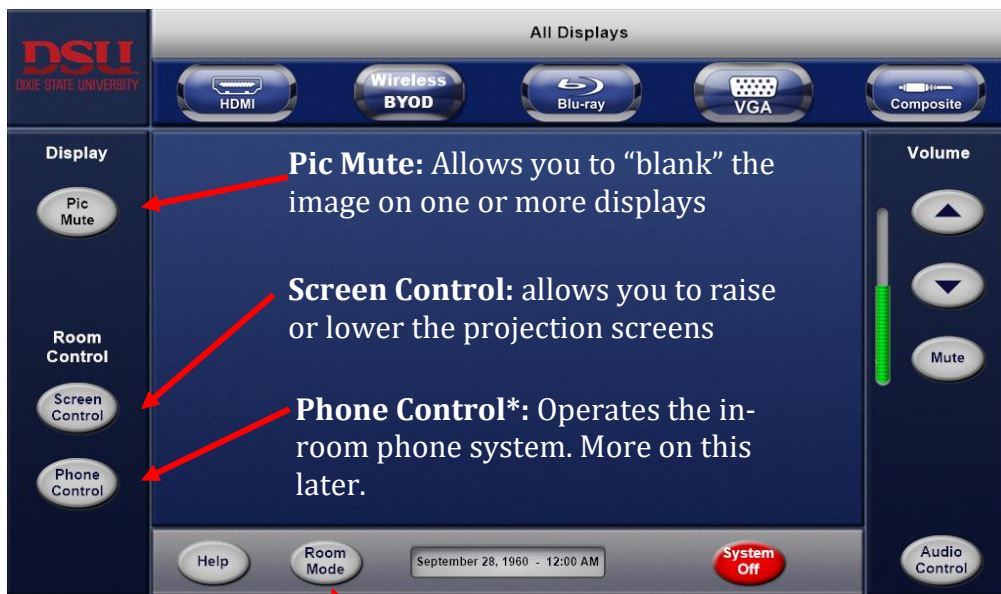


Figure 3.1

**Help:** displays basic help info.

**Room Mode:** Displays a menu to select the different projection modes. More on this later.

**System Off:** Turns the system off.

**Display Selection:** This will be detailed in the “Room Mode” section of the guide

**Input Selections:** You can select the input to see on the screens. Additional controls will appear if the input requires them.

**Main Volume:** You can adjust the overall volume of the system and mute all.

**Audio Control:** Brings up more advanced audio adjustments. This will be detailed later in the guide.

\*Feature to be added soon

## Input Selections (see *Figure 3.1*)

This menu selection lets you select which input will display on the screen.

- Wireless BYOD and Composite do not have any additional controls.
- Blu-Ray: when selected will display the player controls (see *Figure 4*)
- HDMI: Will give you the choice to select from the available HDMI input locations (see *Figure*

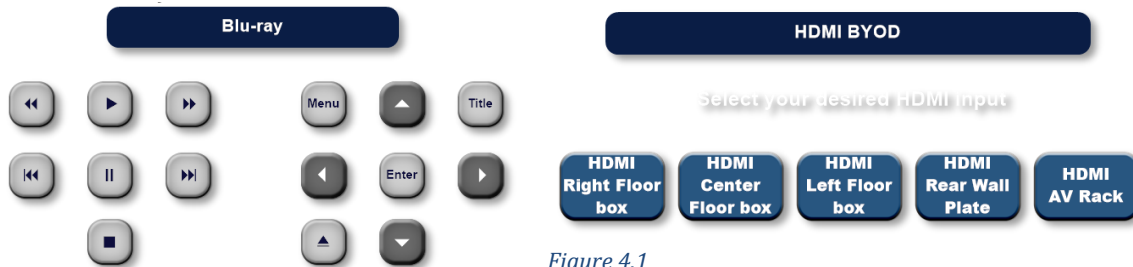


Figure 4.1

Figure 4

- VGA: Will give you the choice to select from the available VGA input locations (see *Figure 4.2*)
  - To find the location of the HDMI or VGA connections please see *Figure 1*
  - **Please Note:** The podium AV connections are connected to Floor Box Left



Figure 4.2

## Audio Control (see *Figure 3.1*)

This menu selection lets you adjust or Mute the audio. (see *Figure 4.2*)

- **House Mics:** This controls the overall volume of the Microphones
  - The individual microphone volume is controlled automatically
- **Rear Audio Input:** Adjust the volume of the rear audio inputs
  - Located at the Wall Plate AV connections
- **Video:** Adjust the volume from the active video input source.
- **Caller In:** Adjust the volume of the remote caller, in a conference call
- **Main:** Adjust the overall volume of the entire system

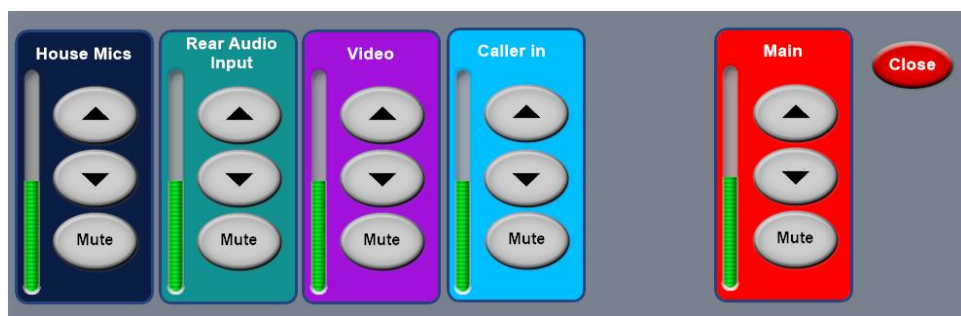


Figure 4.2

## Phone Control\* (see *Figure 3.1*)

This menu lets you place a phone call through the room audio. (See *Figure 5*)

- **Dial Pad:** use to enter desired number
  - You must dial “8” to get an outside line.
  - The number you are dialing will be displayed on the Dial display
- **Call:** Press to initiate a call
  - If a call is being received, the call button will change to “Answer”
- **End:** Disconnects a call
- **Mute:** This mutes the local audio going to the call.
  - Does not mute the microphones in the room
- **Clear:** This will clear the current number being entered



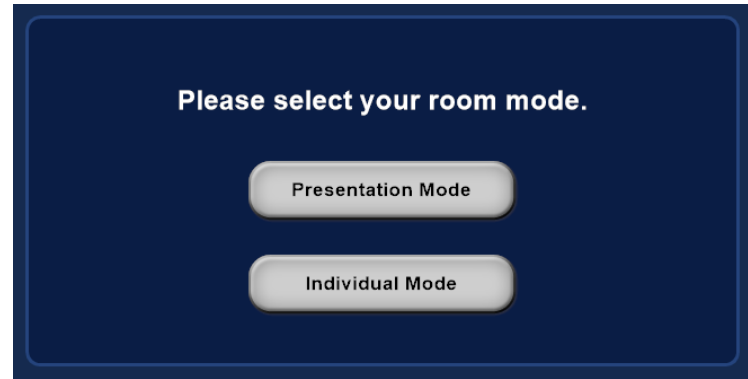
*Figure 5*

\*Feature to be added soon

## Room Mode (see *Figure 3.1*)

This menu lets you select between the different room display modes. (see *Figure 6*)

- **Presentation mode:** This mode shows the same image on all four displays
- **Individual Mode:** This mode can show a discreet image on each display.



*Figure 6*



*Figure 6.1*



*Figure 6.2*

## Display Selection (see *Figure 3.1*)

This menu will change based on the room mode that you have selected.

- **Presentation mode:** (See *Figure 6.1*) you will see “All Displays” when you select an input that input will show on all displays
- **Individual Mode:** (See *Figure 6.2*) The Menu will change to “North TV”, “West TV”, “East TV”, and “East TV”.
  - Press each one and select an input for each.



## AV Connections (see Figure1)

This section will explain the AV connections available to you.

- **Floor Box AV Connections:** (See Figure 7) this houses various AV connections available in the three Floor boxes.
  - **HDMI/ VGA:** Connections for a laptop or mobile device
    - Note: Center Floor box does not have VGA
    - Note: center Floor Box has an HDMI out
  - **Microphone Input:** 2 XLR microphone connections
  - Note: The Left Floor Box has a connection for the Push Button Control Panel located on the Podium

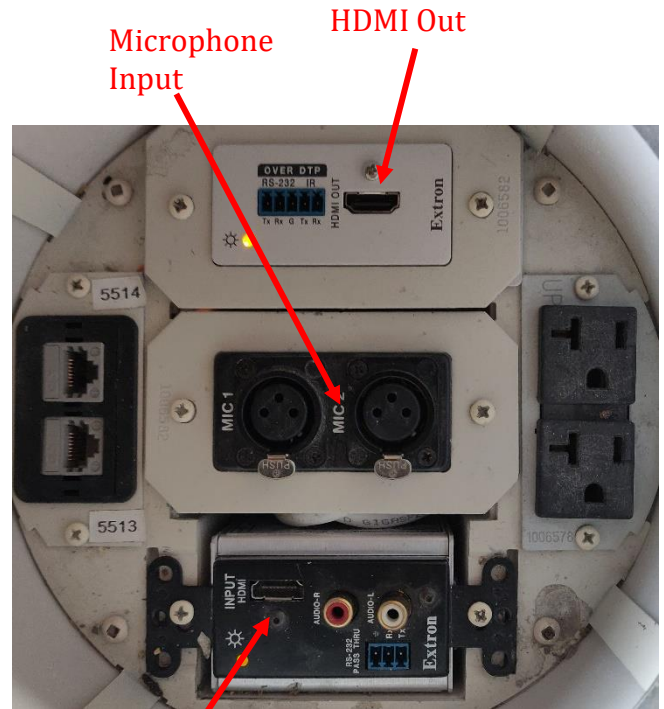
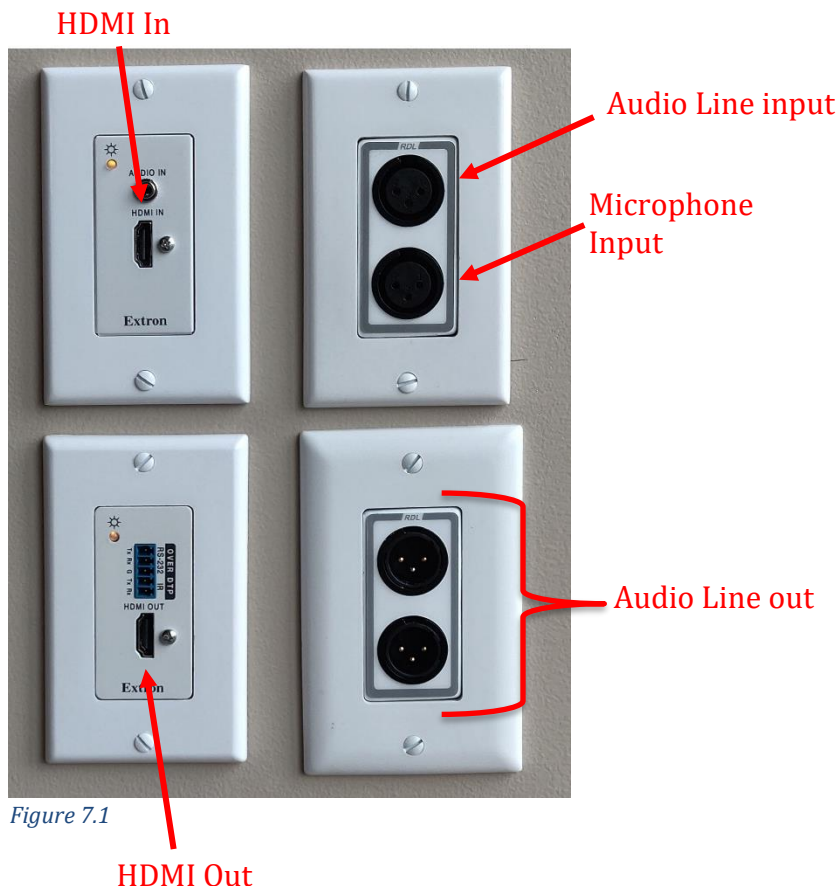


Figure 7



- **Wall Plate AV Connections:** (See Figure 7.1) this houses various AV connections available near the rear of the room.
  - **HDMI In:** Connections for a laptop or mobile device
  - **HDMI Out:** this output mirrors the Projector Video.
  - **Microphone/ Audio Line Input:** 2 XLR audio inputs
  - **Audio Line Out:** 2 XLR line level outputs