

KWA®

OPERATOR'S MANUAL



KWA Performance Industries, Inc.
18571 E. Gale Ave
City of Industry, CA 91748
T: 626.581.1777 • F: 626.581.0777
www.kwausa.com

HK
HECKLER & KOCH
G36C

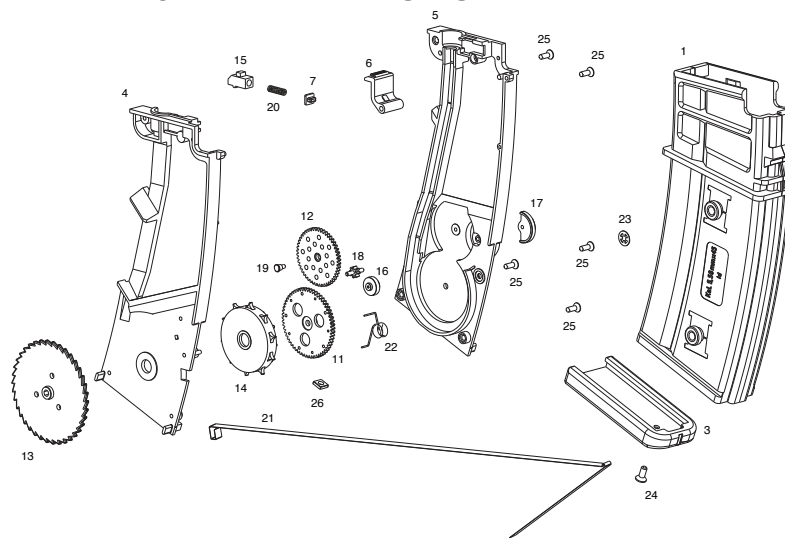
TABLE OF CONTENTS

Use of this manual	2
Safety Guidelines	2-3
Warranty and Service	4-5
Specifications	6
Contents	6
Break-in Period.....	6
Loading.....	7
Fire Selector Switch	8
Gear and Motor Fine Adjustment.....	8
Battery Installation	9
Fuse.....	9
Hop-Up System	10
Sight Adjustment	11
Folding Stock.....	11
Cleaning	12
Troubleshooting	13
Operating Under Unusual Conditions.....	14
Diagrams and Parts Lists	15-18

PARTS LIST

Parts #	Description	Parts #	Description	Parts #	Description
199-1001-M36	TRIGGER SWITCH CONTACT	199-1001-M48	MAIN SPRING	199-1001-M120	TRIGGER SAFETY BLOCK SCREW
199-1001-M37	PISTON HEAD	199-1001-M97	HI-TORQUE BEVEL GEAR	199-1001-M122	TRIGGER SWITCH PIN
199-1001-M38	PISTON HEAD GUIDE	199-1001-M101	HI-TORQUE SPUR GEAR	199-1001-M123	PISTON HEAD O-RING
199-1001-M39	SPRING GUIDE END CAP	199-1001-M107	HI-TORQUE SECTOR GEAR	199-1001-M124	CYLINDER HEAD O-RING
199-1001-M40	SPRING GUIDE	199-1001-M113	OUTER SIDE PLATE SCREW	199-1001-M125	BEARING BUSHING
199-1001-M42	TAPPET PLATE SPRING	199-1001-M114	FRONT WIRE HARNESS SCREW	199-1001-M127	SPRING GUIDE WASHER
199-1001-M43	TRIGGER SWITCH RETURN SPRING	199-1001-M115	MECH BOX SCREW (SHORT)	199-1001-M123	PISTON HEAD O-RING
199-1001-M44	TRIGGER SPRING	199-1001-M116	MECH BOX SCREW (LONG)	199-1001-M124	CYLINDER HEAD O-RING
199-1001-M45	CUT OFF LEVER SPRING	199-1001-M117	OUTER SIDE PLATE SCREW (LONG)	199-1001-M125	BEARING BUSHING
199-1001-M46	SAFETY BLOCK SPRING	199-1001-M118	PISTON HEAD SREW	199-1001-M127	SPRING GUIDE WASHER
199-1001-M47	ANTI REVERSAL LATCH SPRING	199-1001-M119	SLIDE WIRE HARNESS SCREW		

MAGAZINE DIAGRAM AND PARTS LIST



Parts #	Description	Parts #	Description
199-1001-1	MAGAZINE BODY	199-1001-16	BB ROLLER
199-1001-3	MAGAZINE BASE PLATE	199-1001-17	#2 GEAR SPROCKET WEIGHT
199-1001-4	INNER MAGAZINE CASE LEFT	199-1001-18	#2 GEAR SPROCKET
199-1001-5	INNER MAGAZINE CASE RIGHT	199-1001-19	#2 GEAR PIN
199-1001-6	MAGAZINE LOADING COVER	199-1001-20	BB STOP LEVER SPRING
199-1001-7	BB STOP LEVER CAP	199-1001-21	MAGAZINE COIL SPRING
199-1001-11	BB LOADING WHEEL GEAR #1	199-1001-22	BB SPRING
199-1001-12	BB LOADING WHEEL GEAR #2	199-1001-23	INNER MAGAZINE BODY WASHER
199-1001-13	MAGAZINE WINDING WHEEL	199-1001-24	MAGAZINE PLATE SCREW
199-1001-14	BB LOADING WHEEL	199-1001-25	INNER MAGAZINE BODY SCREWS
199-1001-15	BB STOP LEVER	199-1001-26	MAGAZINE RETAINER NUT

PARTS LIST

Parts #	Description	Parts #	Description	Parts #	Description
199-1001-1	GRIP	199-1001-104	HOP-UP BUCKING	199-1001-182	MOTOR ADJUSTMENT HEX SCREW
199-1001-2	MAGAZINE CATCH LEVER	199-1001-117	INNER BARREL	199-1001-184	STOCK BASE ALLEN SCREW
199-1001-5	BOLT CATCH	199-1001-118	INNER BARREL COVER	199-1001-187	TOP RAIL SCREW X3
199-1001-14	MOTOR ADJ. SCREW PLATE	199-1001-119	BB STOP PIN	199-1001-188	TOP RAIL INSERT SCREWS
199-1001-16	SELECTOR LEVER PLUNGER	199-1001-120	CHARGING LEVER PIN	199-1001-189	EJECTION PORT PLATE SCREWS X2
199-1001-21	UPPER RECEIVER (RIGHT)	199-1001-121	ELEVATION SCREW	199-1001-190	MAIN FRAME NUT X3
199-1001-22	UPPER RECEIVER (LEFT)	199-1001-122	WINDGAGE SCREW	199-1001-194	STOCK BASE SCREW WASHER
199-1001-23	STOCK HANGER	199-1001-123	HAND GUARD LOCKING PIN	199-1001-195	MAIN FRAME INNER PIN X 3 SMALL
199-1001-24	SIGHT RAIL	199-1001-124	FRAME LOCKING PIN SCREW	199-1001-196	MAIN FRAME PIN X2 LARGE
199-1001-25	MAGAZINE WELL	199-1001-125	STOCK PIN	199-1001-197	FRONT SIGHT ROLL PIN
199-1001-26	HAND GUARD	199-1001-126	EJECTION PORT PLATE NUTS X2	199-1001-198	REAR SIGHT ROLL PIN
199-1001-30	CHARGING LEVER	199-1001-127	LOWER RAIL SET SCREWS	199-1001-199	REAR SIGHT BASE ROLL PIN
199-1001-31	CHARGING LEVER PLUNGER	199-1001-128	LOWER RAIL SET SCREW B	199-1001-202	HANDGUARD PIN O-RING
199-1001-32	CHARGING TUBE	199-1001-129	LOCK PIN A	199-1001-203	HOP-UP UNIT O-RING
199-1001-33	OUTER BARREL RIGHT	199-1001-130	LOCK PIN B	199-1001-207	GEAR BOX (complete)
199-1001-34	OUTER BARREL LEFT	199-1001-131	STOCK LOCKING LEVER PIN	199-1001-208	MOTOR
199-1001-35	HOP-UP CHAMBER	199-1001-132	MAGAZINE CATCH PIN	199-1001-209	BATTERY WIRE
199-1001-36	HOP-UP ADJUSTING DIAL	199-1001-140	MOTOR SET SPRING	199-1001-210	FUSE
199-1001-37	BARREL CLAMP	199-1001-149	LEVER PLUNGER SPRING	GEAR BOX PARTS	
199-1001-38	BB STOP SPRING	199-1001-150	MAGAZINE LEVER SPRING	199-1001-M1	TRIGGER SWITCH
199-1001-39	HOP UP BAR	199-1001-151	BOLT CATCH SPRING	199-1001-M2	WIRE HOLDER
199-1001-40	FOLDING STOCK	199-1001-152	BB STOP LEVER	199-1002-M3	CYLINDER HEAD (MAIN)
199-1001-42	STOCK PLATE	199-1001-153	INNER BARREL SPRING	199-1001-M5	TRIGGER GUARD PLATE
199-1001-43	BUTT PLATE	199-1001-154	CHARGING LEVER SPRING	199-1001-M6	AIR NOZZLE
199-1001-48	MOTOR BRAKET RIGHT	199-1001-155	CHARGING TUBE SPRING	199-1001-M7	PISTON
199-1001-49	MOTOR BRAKET LEFT	199-1001-156	REAR SIGHT/LARGER APERTURE SPRING	199-1001-M9	WIRE HARNESS
199-1001-51	SELECTOR JOINT GEAR	199-1001-157	ELEVATION SPRING	199-1001-M10	SWITCH (ASSEMBLY)
199-1001-52	SELECTOR GEAR RIGHT	199-1001-158	STOCK LOCKING BUTTON SPRING	199-1001-M11	CONTACT RETAINER
199-1001-53	SELECTOR GEAR LEFT	199-1001-159	STOCK LOCKING LEVER SPRING	199-1001-M12	SELECTOR PLATE
199-1001-54	SELECTOR LEVER RIGHT	199-1001-162	MOTOR ADJUSTMENT SET SCREW	199-1001-M13	TAPPET PLATE
199-1001-55	SELECTOR LEVER LEFT	199-1001-163	MAIN FRAME HEX SCREW X2 LARGE	199-1001-M15	MECH BOX SHELL (LEFT)
199-1001-56	GRIP BASE PLATE	199-1001-165	FUSE CONNECTIONS SCREWS X2	199-1001-M16	MECH BOX SHELL (RIGHT)
199-1001-66	LOWER HAND GUARD RAIL	199-1001-166	INNER BODY BASE SCREWS X3	199-1001-M17	OUTER SIDE PLATE
199-1001-67	FRONT SLING LOOP	199-1001-167	INNER BODY SCREW (REAR) X 7	199-1991-M18	TRIGGER
199-1001-68	FRONT SIGHT	199-1001-168	INNER BARREL BODY SCREW (RIGHT)	199-1001-M19	PISTON PLATE
199-1001-69	INNER FRAME	199-1001-169	MOTOR BRACKET SCREW	199-1001-M20	CUT OFF LEVER
199-1001-70	BARREL HOLDER	199-1001-170	STOCK HANGER SCREW	199-1001-M21	SAFETY BLOCK
199-1001-71	FLASH HIDER	199-1001-174	MOTOR BRACKET SCREW X2	199-1001-M22	RECEIVER MOUNTING BLOCK
199-1001-72	REAR SIGHT	199-1001-175	MAIN BASE PLATE SCREW	199-1001-M23	ANTI-REVERSAL LATCH
199-1001-73	REAR SIGHT BASE	199-1001-178	GRIP BASE PLATE SCREW X2 SMALL	199-1001-M24	TRIGGR TRANSFER BLOCK
199-1001-74	REAR SIGHT ELEVATION BASE	199-1001-181	FLASH HIDER SET SCREW/ SELECTOR LEVER	199-1001-M26	MECH BOX TOP RAIL
199-1001-75	FRAME LOCKING PIN			199-1001-M27	SWITCH (ASSEMBLY)
199-1001-76	REAR TRUNNION			199-1001-M28	SWITCH (ASSEMBLY)
199-1001-77	STOCK LOCKING BUTTON			199-1001-M29	SWITCH (ASSEMBLY)
199-1001-78	STOCK LOCKING LEVER			199-1001-M30	SELECTOR PLATE CONTACT
199-1001-80	CARRY HANDLE NUT			199-1001-M33	CYLINDER
199-1001-81	CARRY HANDLE SPACER			199-1001-M35	ANTI REVERSAL LATCH AXIS
199-1001-89	MOTOR SET BUSHING PLATE				
199-1001-94	SIGHT RAIL MOUNT				
199-1001-95	EJECTION PORT PLATE				
199-1001-96	REAR SIGHT SPRING PLATE				
199-1001-103	HOP-UP NUB				

USE OF THIS MANUAL

Before operating the Airsoft gun, read this manual in its entirety. Important safety topics and tips are discussed throughout all of the chapters. It's important that the operator know the principles of gun handling safety and operation prior to firing the Airsoft gun.

SAFETY GUIDELINES



WARNING! Failure to follow safety guidelines may result in serious injury.

Safety Distance

The effective shooting range is approximately 175 feet. BBs fired from this Airsoft gun may travel further than intended. Make certain that you have an adequate backstop.

Eye Protection

Eye protection should be worn at all times when both shooting and maintaining your Airsoft gun. Protect your eyes from silicone spray and BBs under spring pressure while performing maintenance on your Airsoft gun.

Assume Every Gun is Always Loaded

Until you are certain the chamber is empty, treat every gun as if it were loaded. Do not assume the chamber is empty based on your memory or someone else's words. Always remove the magazine and visually check to confirm the chamber is empty.

Beware of Barrel Obstructions

Ensure the Airsoft gun barrel is free of obstructions before you fire the gun. Even the smallest obstruction such as dirt, dust or a stuck cleaning patch can cause a jam, misfire or malfunction.

Muzzle Control

Always keep the muzzle of the gun pointed in a safe direction. Never point the muzzle at a person or object that you do not intend to shoot.

Keep Your Safety On

Keep the gun's safety on until your sights are aligned on your target and you are ready to fire.

Keep Your Finger Off The Trigger

Keep your finger off the trigger and out of the trigger guard until your sights are aligned on your target and you are ready to fire.



WARNING! Airsoft BBs can be a choking hazard. Keep them away from children.

SAFETY GUIDELINES

Identify Your Target and Backstop

Before you pull the trigger, make certain of your target and what is beyond it. The Airsoft gun should never be fired at surfaces such as rocks, glass, water, or other hard surfaces where BBs are likely to ricochet in unpredictable directions.



WARNING! Adult supervision is required for any person under the age of 18.

Failure To Fire

If the Airsoft gun fails to fire, misfires, or malfunctions, do not look into the gun barrel. BBs can become lodged into the chamber, and serious eye injury may occur.

Maintain Your Gun Properly

Performing proper maintenance, as outlined in this manual, ensures that your Airsoft gun will be safe to shoot and will perform to its designed specifications for many years. Alterations, modifications or adjustments may damage your Airsoft gun, make it unsafe to shoot, and will void all warranty claims.

Store Your Gun Safely

Always store the Airsoft gun in a safe place, and out of the reach of children. Always transport the Airsoft gun in a carrying case. Never display the Airsoft gun in a public place. Keep the safety engaged, and remove the magazine before storing the Airsoft gun.

NOTE: IT IS YOUR RESPONSIBILITY TO TAKE EVERY REASONABLE PRECAUTION TO ENSURE THE SAFE STORAGE AND TRANSPORTATION OF YOUR AIRSOFT GUN.

Orange Tip

The orange tip on Airsoft guns helps Law Enforcement distinguish between the replica guns from their real firearm counterparts. Altering the coloration or markings required by state or Federal law so as to make the product look more like a firearm is dangerous and may be a crime. Operator assumes all risks and responsibility when doing so.

Hazards of Being Mistaken for a Real Firearm

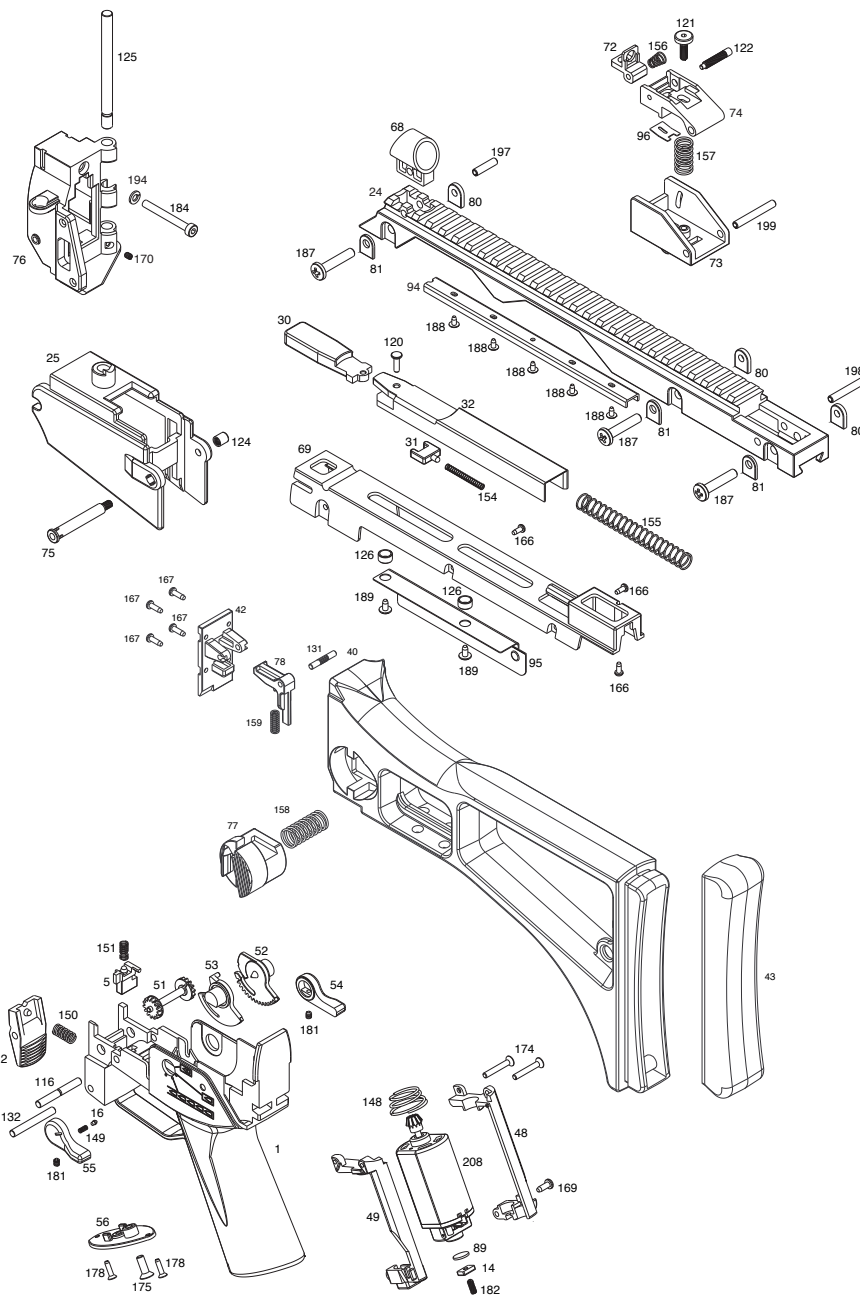
Airsoft guns have been mistaken by Police and Law Enforcement as real firearms. A confrontation with law enforcement while carrying an Airsoft gun can result in serious injury or even death. It is strongly advised to operate the Airsoft gun at a safe and legal location. In the event that you are approached by Law Enforcement personnel, you must comply with their instructions immediately to avoid an incident.

Alcohol, Medications and Drugs

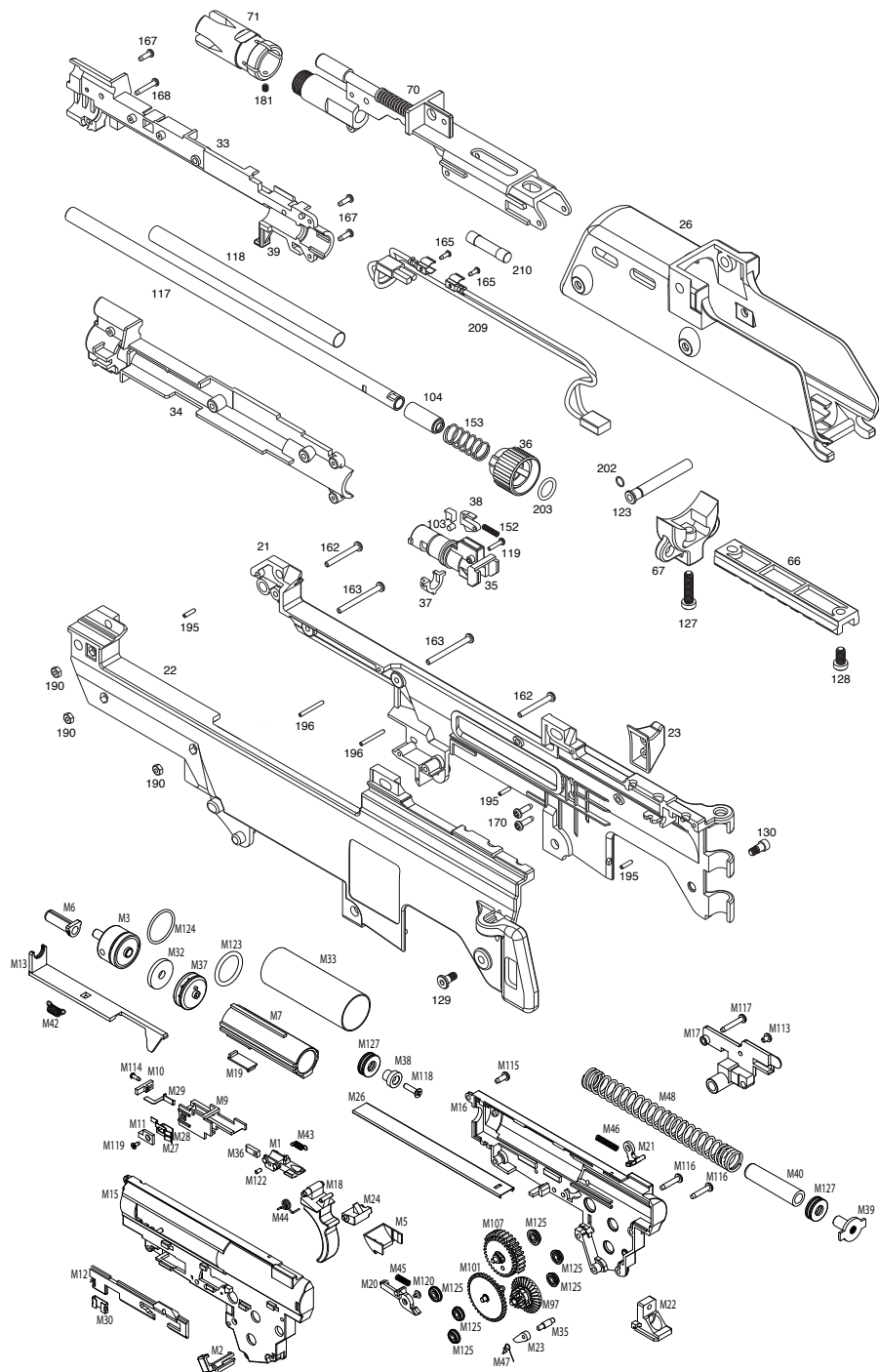
Do not handle or operate your Airsoft gun while under the influence of alcohol, medication or drugs.

Your Responsibility

Your Airsoft gun is well-engineered and manufactured to the highest standards. It was carefully inspected before it was packaged and shipped from our factory. Its safe use depends on you alone. You are the ultimate safety device. Like many other devices, your Airsoft gun is safe unless handled in an irresponsible or uneducated manner.



PARTS DIAGRAM



WARRANTY AND SERVICE

KWA Performance Industries, Inc. is committed to serve our customers with the finest quality products, the highest level of service, and customer satisfaction. Because of this, we offer a 45-day warranty on all KWA products we import and distribute.

What is Covered

Except as specified below, this warranty covers all defects in material and workmanship in KWA products occurring during the above warranty periods. The following are not covered by the warranty: (1) Any product which is not imported and distributed in the U.S.A. by KWA PERFORMANCE INDUSTRIES, INC. (2) Any products not purchased in the U.S.A. from an KWA AUTHORIZED RESELLER (Note: KWA AUTHORIZED RESELLER can be identified by KWA AUTHORIZED RESELLER sticker displayed in the store. If you are uncertain as to whether a dealer is a KWA AUTHORIZED RESELLER, please contact KWA PERFORMANCE INDUSTRIES, INC. as listed above). (3) Damaged deterioration or malfunction resulting from: a) Accident, act of nature, abuse, misuse, neglect, unauthorized product repair, opening of or modification or failure to follow instructions supplied with the product. b) Repair or attempted repair by anyone not authorized by KWA PERFORMANCE INDUSTRIES, INC. c) Removal of the orange safety tip. (4) Use of the product outside the U.S.A. (5) Damaged batteries or improper use of bullets (BBs), or non approved propellants (ie. Propane, Red Gas, 134a...etc.) (6) Use in industrial, commercial, and/or professional applications.

What KWA Will Pay For

If during the applicable warranty period from the date of the original purchase your KWA product is found to be defective by KWA Performance Industries, Inc., KWA Performance Industries, Inc. will repair, or at its discretion, replace with new, used, or equivalent model, the defective product without charge for parts or labor.

How To Obtain Warranty Service

If your product needs service, it may be taken or shipped to KWA Performance Industries, Inc. The following procedures apply whenever your unit must be transported for warranty service:

- You must go to Help Desk at www.kwusa.com/support to obtain an RMA number. THE RMA NUMBER MUST BE CLEARLY MARKED ON THE OUTSIDE OF THE PACKAGE. PACKAGES WITHOUT AN RMA NUMBER CLEARLY MARKED WILL BE REFUSED AND RETURNED TO THE SENDER. NO EXCEPTIONS.
- You are responsible for transporting your unit or arranging for its transportation.
- If shipment of your unit is required; you must pay the initial shipping fee, but we will pay the return shipping charge if the repairs are covered by the warranty.
- WHEN RETURNING YOUR UNIT FOR WARRANTY SERVICE, A COPY OF THE ORIGINAL SALES RECEIPT MUST BE ATTACHED.
- You must include the following: RMA number, your name, address, daytime telephone number, model and serial number (if applicable) of the product and a description of the problem.

This Warranty is Only Valid in the United States

If your product does not require service, but you have questions regarding its operation, please contact our Technical Services Department as listed below.

THIS WARRANTY IS EXPRESSLY MADE IN LIEU OF ALL OTHER WARRANTIES, EXPRESSED OR IMPLIED, INCLUDING WITHOUT LIMITATION, WARRANTIES OF MERCHANTABILITY AND FITNESS FOR A PARTICULAR PURPOSE.

OUR LIABILITY IS LIMITED TO THE REPAIR OR REPLACEMENT, AT OUR OPTION, OF ANY DEFECTIVE PRODUCT AND SHALL IN NO EVENT INCLUDE INCIDENTAL OR CONSEQUENTIAL COMMERCIAL OR PROPERTY DAMAGES OF ANY KIND. WE ARE NOT RESPONSIBLE FOR PRODUCTS LOST, STOLEN AND/OR DAMAGED DURING SHIPPING.

SOME STATES DO NOT ALLOW LIMITATIONS ON HOW LONG AND IMPLIED WARRANTY LASTS AND/OR DO NOT ALLOW THE EXCLUSION OF INCIDENTAL OR CONSEQUENTIAL DAMAGES, THE ABOVE LIMITATIONS AND EXCLUSIONS MAY NOT APPLY TO YOU.

This warranty gives you specific legal rights, but you may also have other rights which vary from state to state. This Warranty may not be altered other than in writing signed by an officer of KWA Performance Industries, Inc.

KWA Performance Industries, Inc.
18571 E. Gale Ave.
City of Industry, CA 91748-1339

626-581-1777

www.kwausa.com

OPERATING UNDER UNUSUAL CONDITIONS

Unusual conditions are defined as any condition requiring special maintenance. Perform maintenance outlined for the climate similar to your operational area

Extreme Cold:

Operating an Airsoft gas gun in extremely cold temperatures is not recommended. Cold temperature will cause the Hop-Up Bucking to harden, reducing its effectiveness or cause the gearbox shell to fracture during operation, rendering the gun inoperable.

Extreme Heat:

Do not keep Airsoft gun and batteries under direct sunlight for long periods of time.

Dust or Sand:

Dust or sand can get into a gun and cause malfunctions and/or excessive wear. Keep the gun covered whenever possible. Use lubricant sparingly, as lube naturally attracts dirt and other particles. After use in a dusty area, always field strip the gun (refer to Disassembly Section) and clean any areas you can reach with a soft, lint-free cloth.

Heavy Rain:

Keep the gun out of the rain and water. This will prevent electrical failure and fluid build-up inside the mechbox. Dry gun completely with clean cloth and clean inner barrel if necessary.

BASIC TROUBLESHOOTING GUIDE FOR RIFLE

SYMPTOMS	CAUSE	SOLUTIONS
Air Soft gun is not firing	Selector set to Safe Mode	Select Semi-Auto or Full-Auto Mode
	Dead battery	Replace or Charge battery
	Burned out fuse	Replace with a new fuse
	Motor damaged or bad connection	Return gun for professional care
	Pinched wiring	Return gun for professional care
Motor is running but not firing	Internal failure	Return gun for professional care
Motor or Battery is hot after short use	Pinched wiring	Return gun for professional care
	Motor damaged or bad connection	Return gun for professional care
Semi-Auto feature not functioning properly	Incorrect timing	Set selector to full-auto mode. Dry fire 10-20 rounds before returning it to semi-auto mode
Semi-Auto feature not functioning at all	Internal failure	Return gun for professional care
Firing cycle slows down	Weak battery	Recharge battery
High pitch or grinding noise	Gear may be damaged or Motor level not adjusted	Return gun for professional care
BB travels upward	Excessive hop	Turn hop adjustment dial backward
BB travels downward	Insufficient hop	Turn hop adjustment dial forward
BB double feeding or rolling out of the barrel	Excessive oil in chamber	Fire 200 rounds to eliminate excessive oil
	Hop-Up unit is contaminated	Clean Hop-Up unit with supplied cleaning rod
	Hop-Up unit may be damaged	Return gun for professional care
Hop-Up unit can't be adjusted	Damaged adjustment dial or internal parts	Return gun for professional care
Inner barrel is jammed	Use of recycled or low quality BBs	Use KWA Perfect BBs or other high quality BBs
	Inner barrel is contaminated	Clean inner barrel with supplied cleaning rod
	Inner barrel is damaged	Return gun for professional care
Hi-cap magazine not feeding	Magazine has not been wound.	Wind wheel underneath magazine
	BBs are lodged inside the magazine	Shake or tap magazine to unclog the BBs
	Internal failure	Return gun for professional care

SPECIFICATIONS

- Overall Length [Fixed] = 50.5 cm (19.88")
- Outer Barrel Length = 72 mm (28.35")
- Inner Barrel Length = 247 mm
- Inner Barrel Diameter = 6.05 mm
- Weight = 2.62 kg (5.77 lbs)
- Barrel thread = -14 mm
- Caliber = 6 mm
- Magazine Capacity = 400 rounds
- Rate of Fire = 20+ RPS
- Velocity = 116~122 MPS (380~400 FPS)
- Energy Output with 0.20g BB = 1.5 Joules
- Power Source = 9.6v NiMh, 7.4v or 11.1v 15c Li-po/Li-Fe

*Individual test results may vary depending on brand of BBs, and chronograph used.

Special Features:

- KWA 2GX Gearbox
- KWA 2G High Performance Bucking
- Ambidextrous operations
- Semi and Full Auto selective fire
- Adjustable Hop-up
- Folding stock
- Fiber reinforced polymer body

PACKAGE CONTENTS

- 1 H&K G36C Airsoft gun
- 1 Safety Cap
- 1 Cleaning Rod
- 1 Owners Manual

BREAK-IN PERIOD

Airsoft guns, like many other products require a "break-in" period to ensure the optimal performance. This break-in period allows the spring, piston, gears and other moving parts to be seated and become more consistent in their movements. Every new H&K G36C Airsoft gun is manufactured with more spring tension than is required, this break-in period will allow the spring to "settle" and operate at the specified FPS range.

The H&K G36C Airsoft gun's break-in period will require a minimum of 2000 rounds. During this break-in period, the Airsoft gun will require more cleaning because it will expel excessive grease from the gearbox. After the break-in period, the gun will operate within factory specification. The accuracy of the brass barrel will also improve as you continue to use the gun.

LOADING HIGH CAP MAGAZINE

1. Release the magazine by pressing the magazine release button.
2. Open the magazine trap door and pour the Airsoft BBs into the chamber. Close the door when the chamber is full.
3. Turn the winding wheel on the bottom of the magazine to tighten the spring tension. This will allow the Airsoft BBs to feed through the top of the magazine.
4. Insert the magazine into the Airsoft gun until it clicks into place.

NOTE: Spring tension will unwind as you fire the gun. Continue winding the magazine regularly as necessary to empty the high cap magazine.

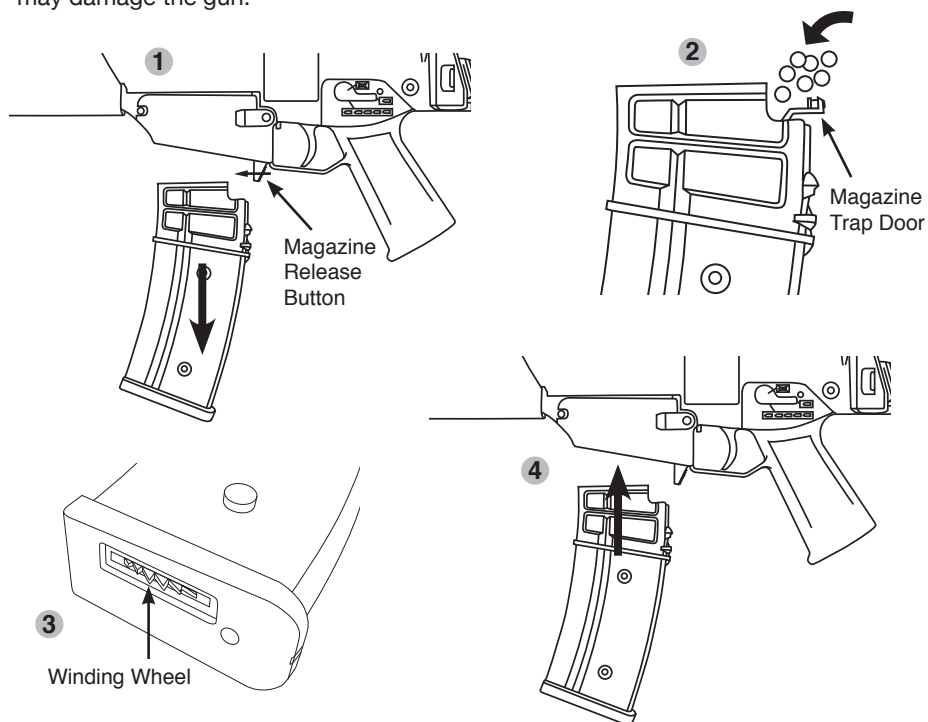
Loading safety tips:

- Switch the selector to safe
- Be sure the safety cap is on
- Keep your finger off trigger at all times



WARNING: Use only 6mm high grade BBs. Using low grade BBs will damage Airsoft gun.

NOTE: Always use KWA Perfect BBs, size 0.2 or 0.25g. Using only KWA Perfect BBs can give your Airsoft gun its best performance. Using recycled and low grade BBs may damage the gun.



CLEANING AND LUBRICATION

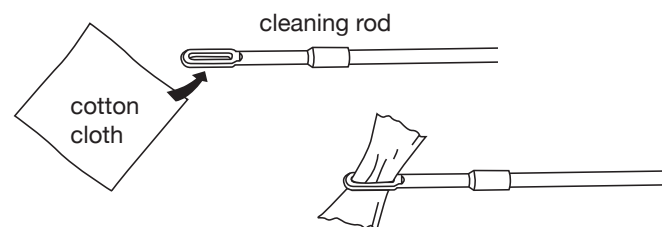


WARNING! Unload and clear the Airsoft gun of all BBs before cleaning.

Cleaning Procedure

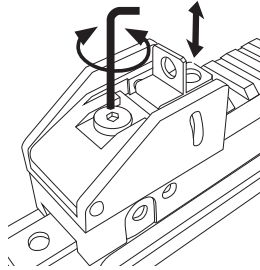
The Airsoft gun barrel should be cleaned and lubricated after each shooting session. Regular cleaning prevents the effects of BB residue buildup, and ensures all parts are lubricated properly.

1. Ensure that the safety is engaged
2. Disable Hop-Up by dialing to the normal position
3. Remove the magazine and clear the chamber of loaded BBs
4. Disassemble the receiver (see Disassembly section)
5. Steps to use cleaning rod:
 - a. Cut a piece of clean cotton cloth to 1 inch by 0.5 inch size. Insert one end of the cloth into the hole in the cleaning rod (adjust the length of cloth for smooth entry into the barrel)
 - b. Wind the cloth around the cleaning rod
 - c. Insert the cleaning rod into the inner barrel, turning the rod as you insert into the barrel
 - d. Remove the cleaning rod and check the cotton cloth for dirt. Repeat steps a. through c. when necessary
6. Clean the remainder of the Airsoft gun with cotton-tipped swabs, or general purpose cleaning cloths.

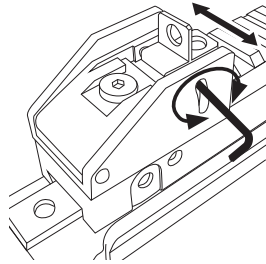


SIGHT ADJUSTMENT

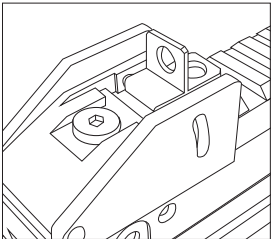
Adjust the sight vertically by turning elevation adjusting screw using 2.5mm hexagonal key for the elevation screw. Turning adjusting screw clockwise and counterclockwise to lower and raise the rear sight respectively



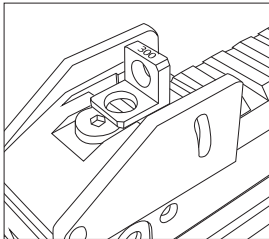
Adjust the sight horizontally by turning windage adjusting screw using 2.5mm hexagonal key for the elevation screw. Turning adjusting screw clockwise and counterclockwise to shift the rear sight to right and left respectively.



CLOSE RANGE



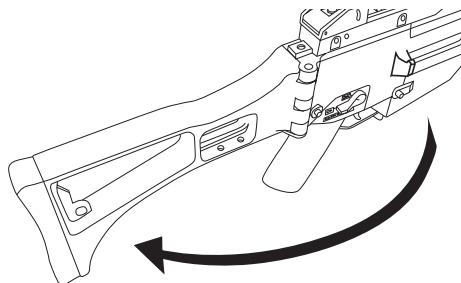
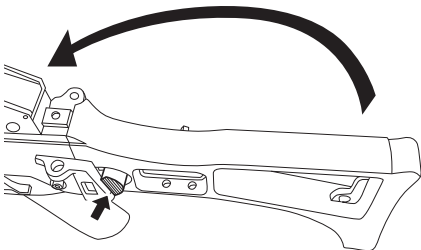
LONG RANGE



FOLDING STOCK

To fold: Press stock release lever and fold stock around until it click into place

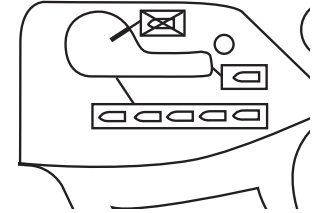
To unfold: Gently lift up on stock to release from body. Swing stock into open position until it click into place.



FIRE SELECTOR SWITCH

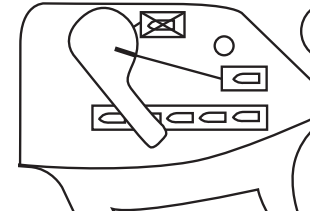
1. Safe

In Safe mode the gun will not fire. For safety reasons, you should keep the switch in Safe mode at all times when you are not ready to fire.



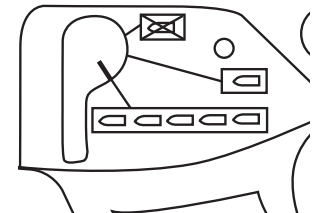
2. Semi-Auto

In Semi-Auto mode the gun will fire one shot each time you pull the trigger.



3. Full Auto

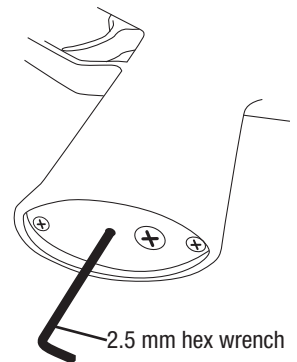
In this Full Auto mode the gun will fire continuously as long as the trigger is depressed.



WARNING: Do not pull the trigger when switching the fire selector.

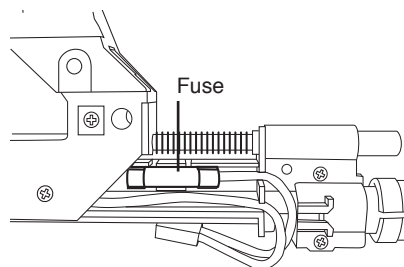
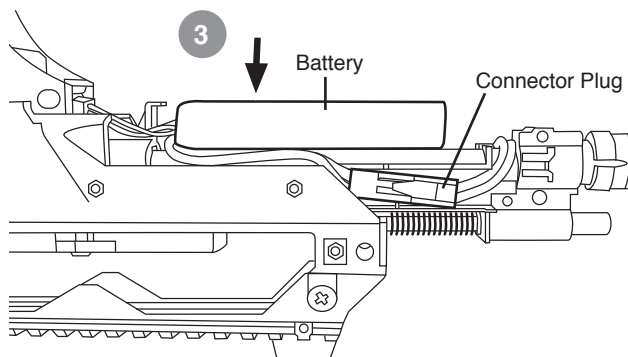
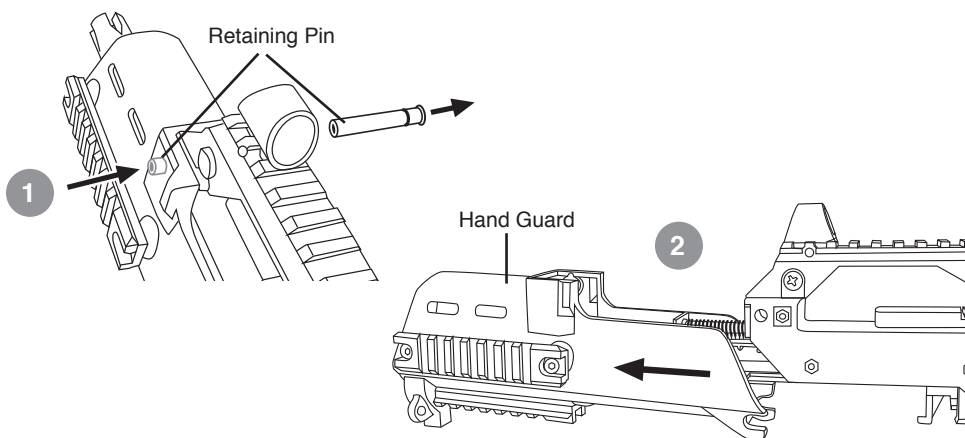
GEAR AND MOTOR FINE ADJUSTMENT

Adjust motor when cycling sound becomes high after operation for a long period of time. Inadequately tightening the screw, over or under, may damage the motor.



BATTERY INSTALLATION

1. Set the fire selector switch to safe mode then remove hand guard retaining pin.
2. Slide hand guard off.
3. Turn gun over and place battery into compartment, back end first, then plug battery into connector.
4. Place hand guard back on the gun. Align retaining pin holes and push the retaining pin back into the gun. Make sure to push the retaining pin all the way in until click securely into place.



FUSE

To replace the fuse, remove the hand guard and replace the fuse with a 20A glass fuse.

HOP-UP SYSTEM

The Hop-Up device is one of KWA's standard features, giving Airsoft BBs greater stability, further travel and increased accuracy. Airsoft BBs are light-weight and can be affected by wind when fired. With the Hop-Up system, the trajectory of the Airsoft BBs can be adjusted according to the shooting environment or surroundings.

HOP-UP ADJUSTMENT

- Fold and then pull the charging handle to the rear, the ejection port will open and Hop-Up adjustment dial is revealed. Pull and hold charging handle to the rear when adjusting Hop-Up.
- Turn the Hop-Up adjustment dial up to increase hop-up. Turn the Hop-Up adjustment dial down to decrease hop-up.
- Excessively turning of Hop-Up adjustment dial up can cause Airsoft BBs to jam. Continued firing with a jammed barrel will cause damage to the gearbox.
- When jamming occurs, immediately stop shooting and turn the Hop-Up adjustment dial backward to decrease hop. Remove jammed Airsoft BBs.

Before removing jammed Airsoft BBs, be sure to return the hop-up adjustment dial to normal position. After removal of Airsoft BBs, test fire 2 – 3 rounds to check for clearance. Resume adjustment. KWA Airsoft guns are made with precision barrel, use only new, quality Airsoft BBs. The use of recycled or low quality Airsoft BBs are the primary cause of jamming. In most cases, it can severely damage the gearbox and inner barrel.

Excessive Hop – Airsoft BB travels an upward trajectory path. Turn Hop-Up adjustment dial down to decrease hop-up.

Perfect Hop – Airsoft BB travels long distance horizontally.

Inefficient Hop – Airsoft BB travels a downward trajectory path. Turn Hop-Up adjustment dial up to increase hop.

